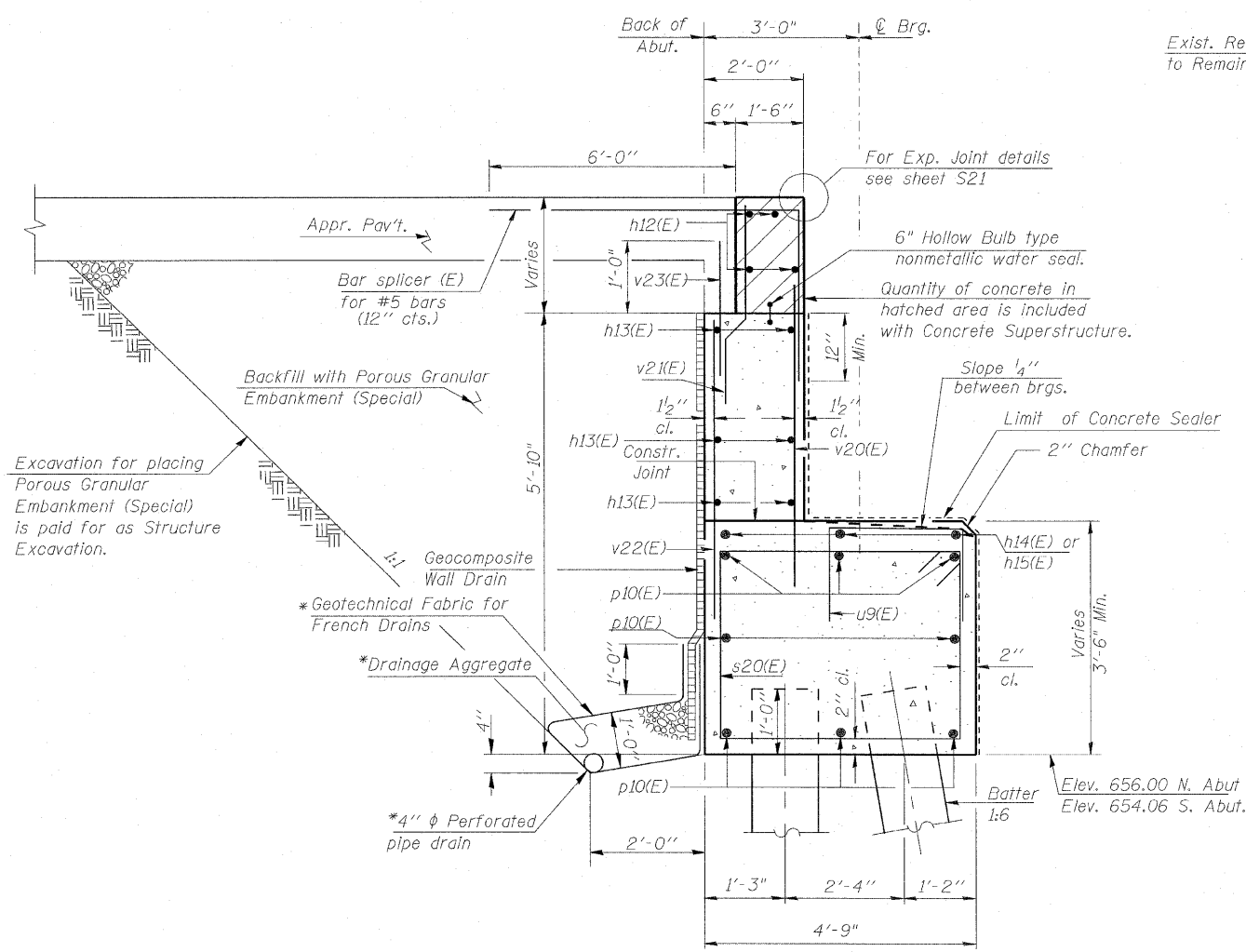


F.A.P.	SECTION	COUNTY	TOTAL SHEETS	SHEET NO.
330	465 VB-R-1	COOK	103	67
STA. 173+50 TO STA. 195+00		ILLINOIS FED. AID PROJECT		
FED. ROAD DIST. NO. 7		SHEET NO. S 34 of S60		

BILL OF MATERIAL
(FOR TWO ABUTMENTS)

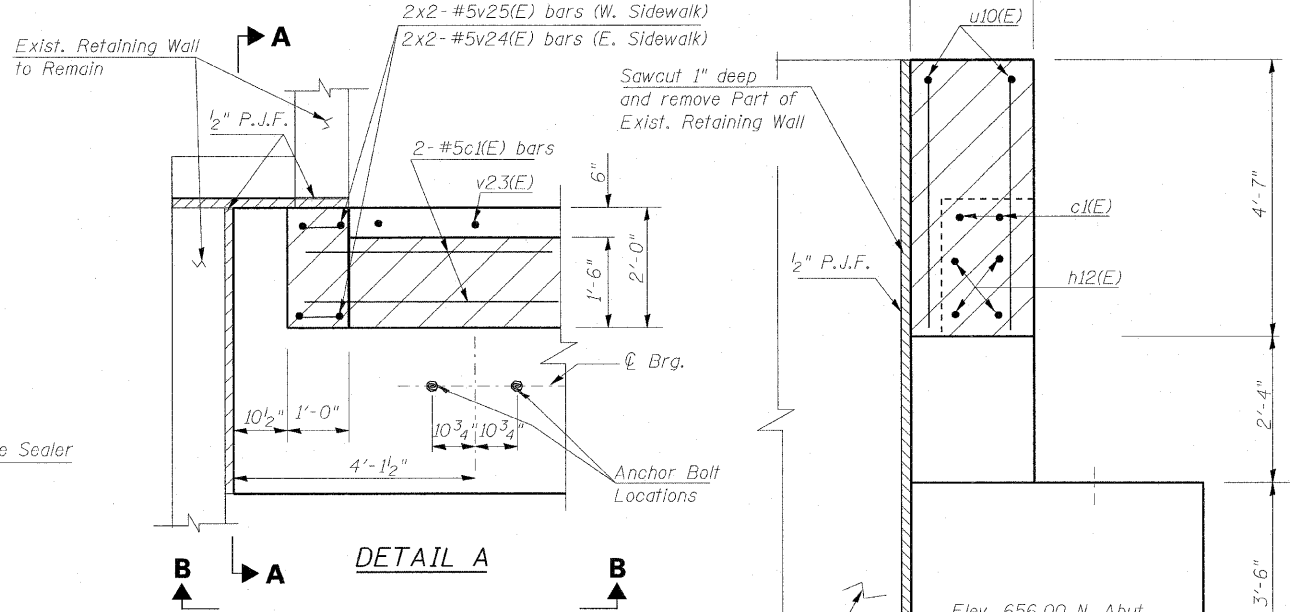
Bar	No.	Size	Length	Shape
c(E)	4	#5	2'-5"	┌
c1(E)	8	#5	8'-2"	┌
c2(E)	4	#5	1'-6"	┌
c3(E)	8	#5	3'-5"	┐
h12(E)	16	#6	49'-10"	—
h13(E)	24	#5	50'-8"	—
h14(E)	12	#5	16'-10"	—
h15(E)	12	#5	19'-2"	—
p10(E)	32	#7	50'-8"	—
s20(E)	288	#4	15'-11"	□
u9(E)	128	#5	7'-3"	┐
u10(E)	8	#5	9'-5"	┐
v20(E)	204	#5	4'-2"	—
v21(E)	204	#4	3'-2"	┌
v22(E)	204	#5	4'-6"	—
v23(E)	198	#5	2'-0"	—
v24(E)	8	#5	6'-8"	—
v25(E)	8	#5	3'-0"	—
Concrete Structures		Cu. Yd.	161.2	
Reinforcement Bars, Epoxy Coated		Pound	13,310	
Structure Excavation		Cu. Yd.	511.6	
Porous Granular Embankment, Special		Cu. Yd.	333.5	
Pipe Underdrains for Structures 4"		Foot	207	
Furnishing Steel Piles HP10x42		Foot	2,672	
Driving Piles		Foot	2,672	
Test Pile Steel HP10x42		Each	2	
Concrete Sealer		Sq. Ft.	1,959	
Concrete Encasement		Cu. Yd.	24.0	



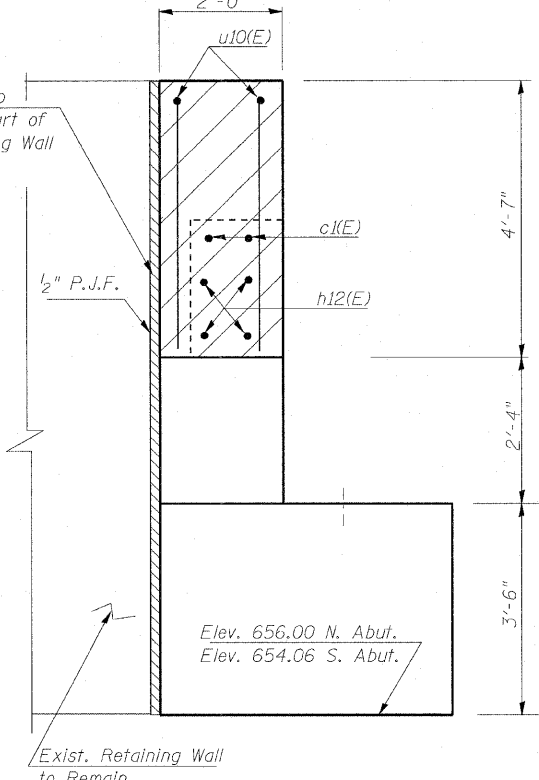
SECTION THRU ABUT.

* Included in the cost of Pipe Underdrains for Structures.

Note:
All drainage system components shall extend parallel to the abutment back wall until they intersect the wingwalls or 2'-0" from the end of the wingwalls when the wings are parallel to the abutment. The pipe shall extend under the wingwall, if necessary, until intersecting the side slopes. The pipes shall drain into concrete headwalls. (See Article 601.05 of the Standard Specifications and Highway Standard 601101).

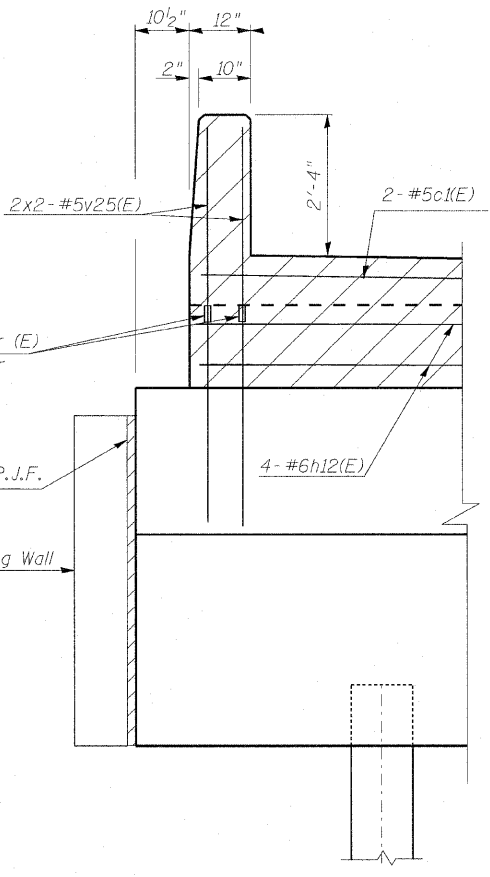


DETAIL A



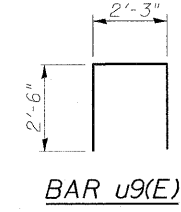
END VIEW A-A

Reinforcement shown in hatched area for clarity

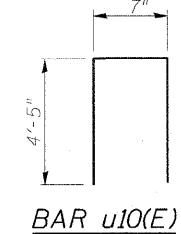


VIEW B-B AT WEST SIDEWALK

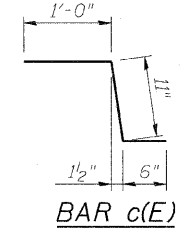
Reinforcement shown in hatched area for clarity



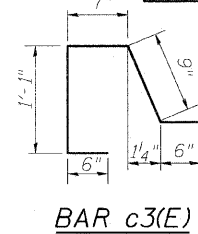
BAR u9(E)



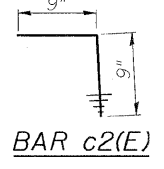
BAR u10(E)



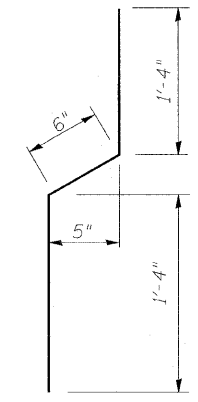
BAR c(E)



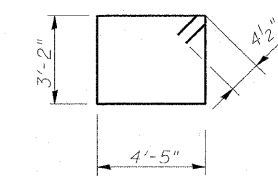
BAR c3(E)



BAR c2(E)



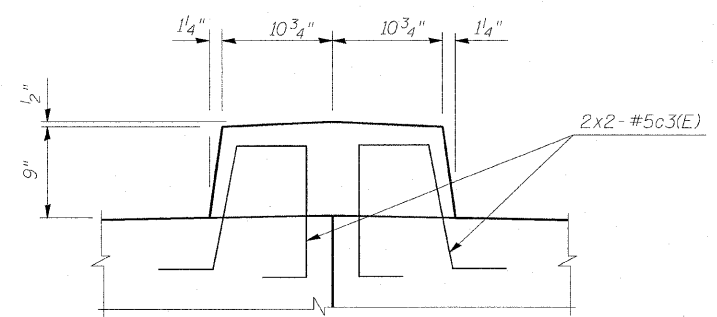
BAR v21(E)



BAR s20(E)

Notes:

1. Work this sheet with Sheet S33.
2. Work this sheet with Sheet S20 for bar splicer details.
3. Work this sheet with Sheet S47 for concrete encasement.



DETAIL B

REVISIONS	
NAME	DATE

ILLINOIS DEPARTMENT OF TRANSPORTATION
ABUTMENT II
FAP 330 US 12/45 (MANNHEIM RD.) OVER
500 LINE RR & FRANKLIN AVE.
STRUCTURE NO. 016-2815
SECTION 465 VB-R-1
STA. 183+33.30
DATE 7/2009
DRAWN BY JHR
CHECKED BY DSB

EARTH TECH | AECOM