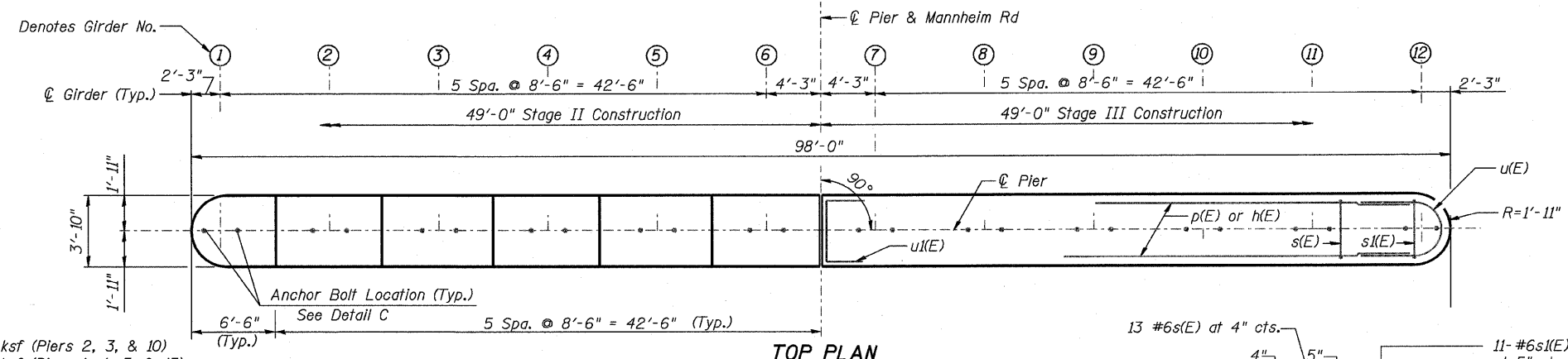
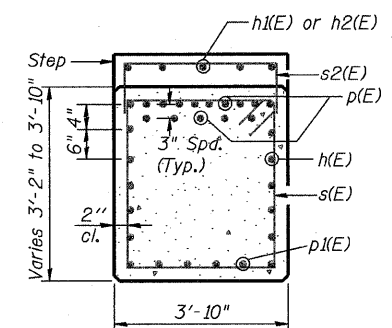


F.A.P.	SECTION	COUNTY	TOTAL SHEETS	SHEET NO.
330	465 VB-R-1	COOK	103	68
STA. 173+50 TO STA. 195+00		FED. ROAD DIST. NO. 7 ILLINOIS FED. AID PROJECT		
Contract # 60407		SHEET NO. S35 of 560		

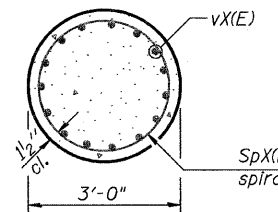


**FOUNDATION DATA**

Max. Applied Bearing Pressure=4.1 ksf (Piers 2, 3, & 10)  
 Max Applied Bearing Pressure=4.0 ksf (Piers 1, 4, 5, & 13)



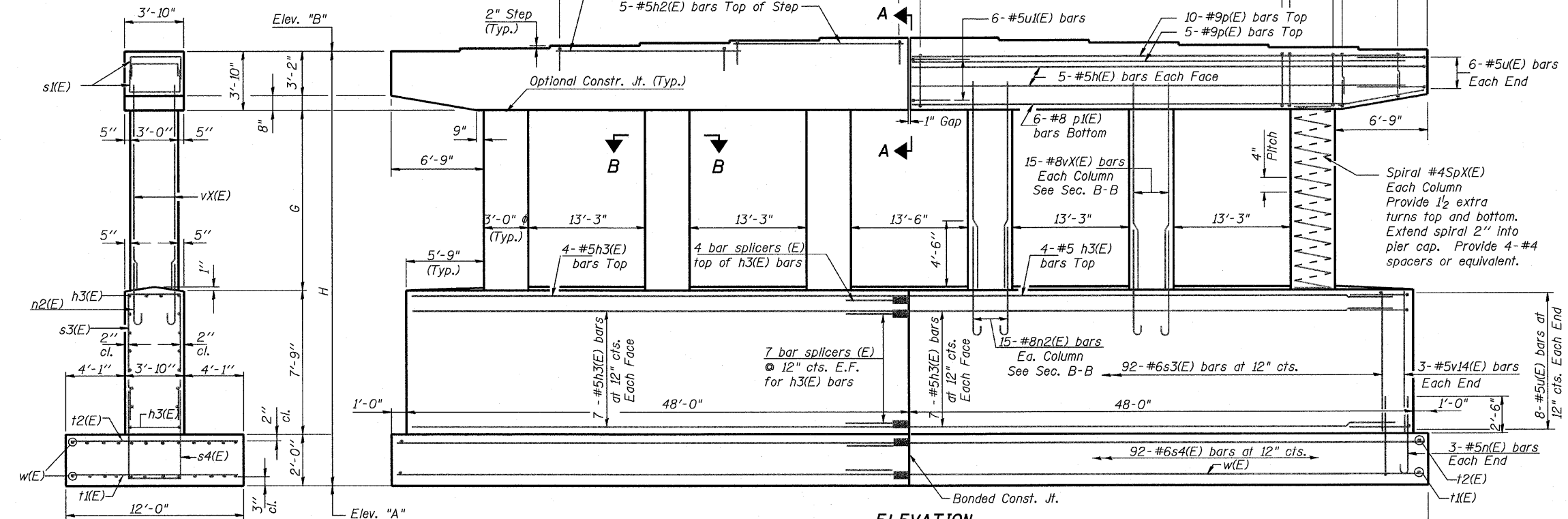
**SEC. A-A**



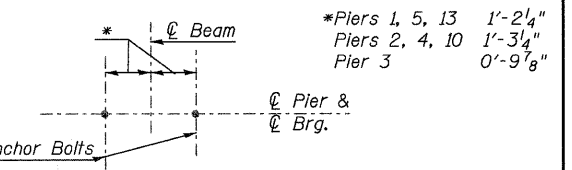
**SEC. B-B**

**TABLE OF ELEVATION AND DIMENSION**

PIER NO.	EL. "A"	EL. "B"	H	G
Pier 1	640.5	659.70	19'-2 3/8"	5'-7 3/8"
Pier 2	640.5	663.24	22'-8 8/8"	9'-1 7/8"
Pier 3	642.0	666.85	24'-10 4/8"	11'-3 1/4"
Pier 4	640.5	669.89	29'-4 5/8"	15'-9 5/8"
Pier 5	641.0	672.50	31'-3 5/8"	17'-8 5/8"
Pier 10	643.0	671.99	28'-11 8/8"	15'-4 8/8"
Pier 13	640.5	661.29	20'-9 1/2"	7'-2 1/2"



**ELEVATION**  
(Looking Upstation)

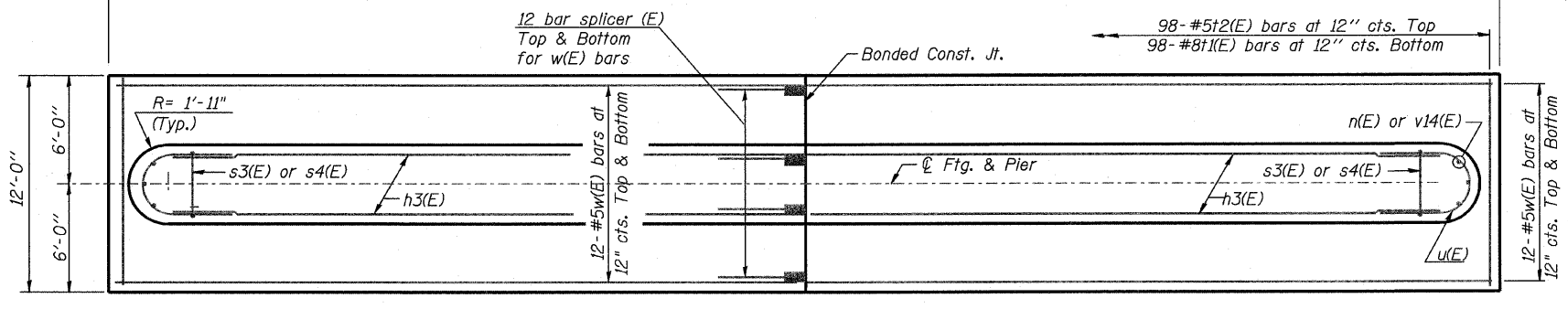


**DETAIL "C"**  
BEARING ANCHOR BOLTS LOCATION

**END VIEW**

**COLUMN REIN. TABLE**

PIER NO.	vx(E)	spX(E)
Pier 1	v1(E)	sp1(E)
Pier 2	v2(E)	sp2(E)
Pier 3	v3(E)	sp3(E)
Pier 4	v4(E)	sp4(E)
Pier 5	v5(E)	sp5(E)
Pier 10	v10(E)	sp10(E)
Pier 13	v13(E)	sp13(E)



**FOOTING PLAN**

**Notes:**

- Space reinforcement in cap to miss anchor bolts. Pour steps monolithically with cap.
- Pier cap reinforcement is the same on both sides of 1" gap.
- See Sheets S41-S43 for reinforcement details & bill of material.
- vx(E) and spX(E) bars vary for piers. See Sheets S41-S43 for details.

Min. Lap Splice  
 #5 = 1'-8"  
 #8 = 4'-6"  
 #10 = 7'-3"

REVISIONS		ILLINOIS DEPARTMENT OF TRANSPORTATION
NAME	DATE	
		PIERS 1, 2, 3, 4, 5, 10, & 13
		FAP 330 US 12/45 (MANNHEIM RD.) OVER 500 LINE RR & FRANKLIN AVE. STRUCTURE NO. 016-2815
		SECTION 465 VB-R-1 COOK COUNTY STA. 183+33.30 DRAWN BY JHR
		DATE 7/2009 CHECKED BY OPY

**EARTH TECH | AECOM**