

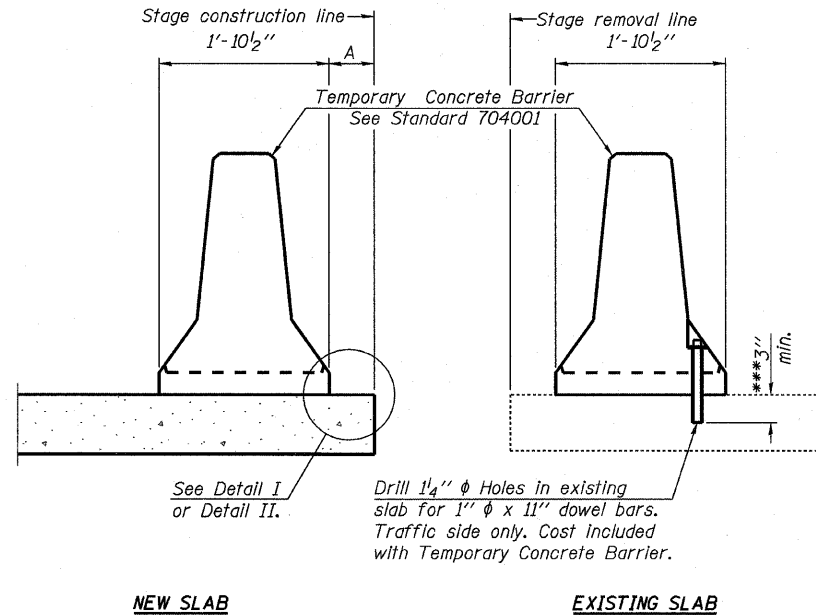
F.A.P.	SECTION	COUNTY	TOTAL SHEETS	SHEET NO.
330	465 VB-R-1	COOK	103	79
STA. 173+50 TO		STA. 195+00		
FED. ROAD DIST. NO. 7		ILLINOIS FED. AID PROJECT		
Contract # 60407		SHEET NO. 546 of 560		

Typical Anchorage (Stage Joint)

When "A" is 3'-6" or less, the temporary concrete barrier shall be anchored to the new slab according to Detail I or Detail II. No anchorage is required when "A" is greater than 3'-6".

Special Anchorage (Bridge Fascia)

When "A" is 3'-6" or less & due to aesthetic reasons it is undesirable to have a row of inserts along the fascia of the bridge (W. edge of deck during Stage III), the temporary concrete barrier shall be anchored to the new slab using 1" dowel bar using the detail for securing temporary concrete barrier to existing slabs. The Contractor shall exercise care when placing reinforcement bars and drilling into the new deck to avoid drilling into reinforcement bars.



SECTIONS THRU SLAB OR DECK BEAM

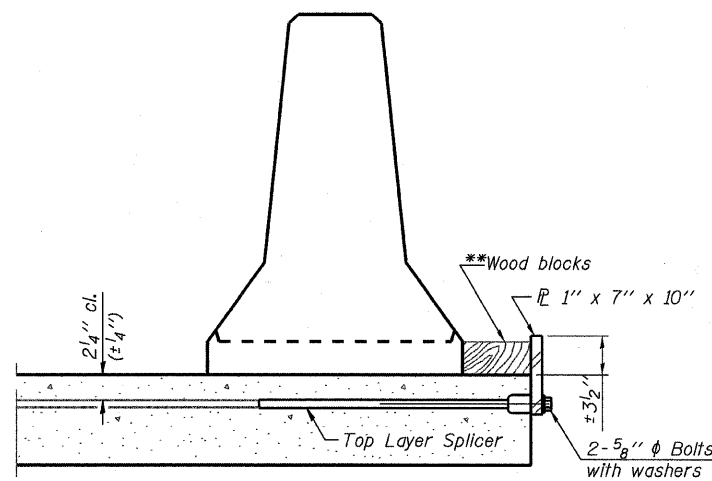
NOTES

Detail I - With Bar Splicer or Couplers:
Connect one (1) 1"x7"x10" steel PL to the top layer of couplers with 2-5/8" phi bolts screwed to coupler at approximate C of each barrier panel.

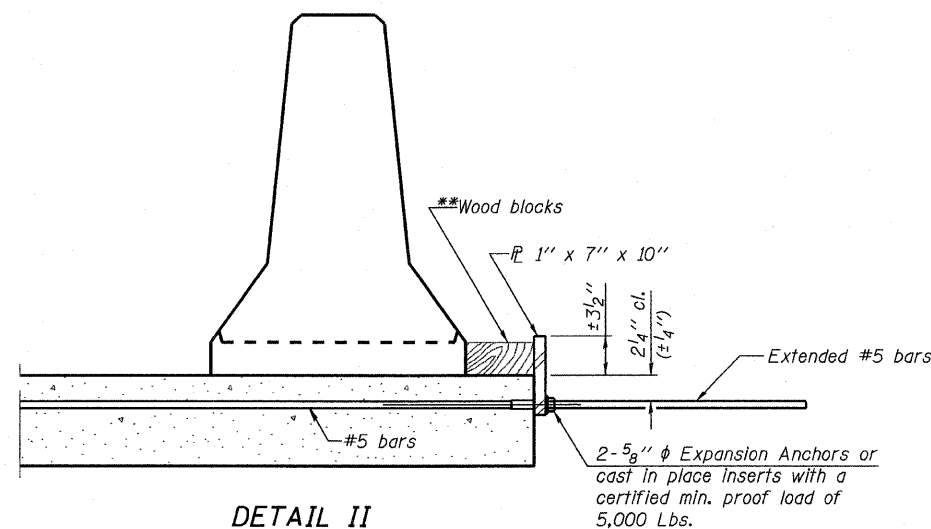
Detail II - With Extended Reinforcement Bars:
Connect one (1) 1"x7"x10" steel PL to the concrete slab or concrete wearing surface with 2-5/8" phi Expansion Anchors or cast in place inserts spaced between the top layer of reinforcement at approximate C of each barrier panel.

Cost of anchorage is included with Temporary Concrete Barrier. The 1" x 7" x 10" plate shall not be removed until stage II construction forms and all reinforcement bars are in place and the concrete is ready to be placed.

***Dimension shown is minimum required embedment into concrete. If hot-mix asphalt wearing surface is present, minimum embedment shall be in addition to wearing surface depth.

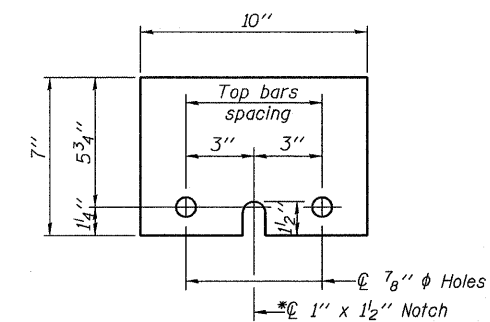


DETAIL I



DETAIL II

**Wood blocks may be omitted when required to provide minimum stage traffic lane width. When the wood blocks are omitted, the concrete barrier shall be in direct contact with the steel retainer plate.



STEEL RETAINER PL 1" x 7" x 10"

* Required only with Detail II

REVISIONS		ILLINOIS DEPARTMENT OF TRANSPORTATION
NAME	DATE	
		TEMPORARY CONCRETE BARRIER FAP 330 US 12/45 (MANNHEIM RD.) OVER 500 LINE RR & FRANKLIN AVE. STRUCTURE NO. 016-2815 SECTION 465 VB-R-1 STA. 183+33.30 DATE 7/2009

EARTHTECH | AECOM

COOK COUNTY
DRAWN BY JHR
CHECKED BY CLS