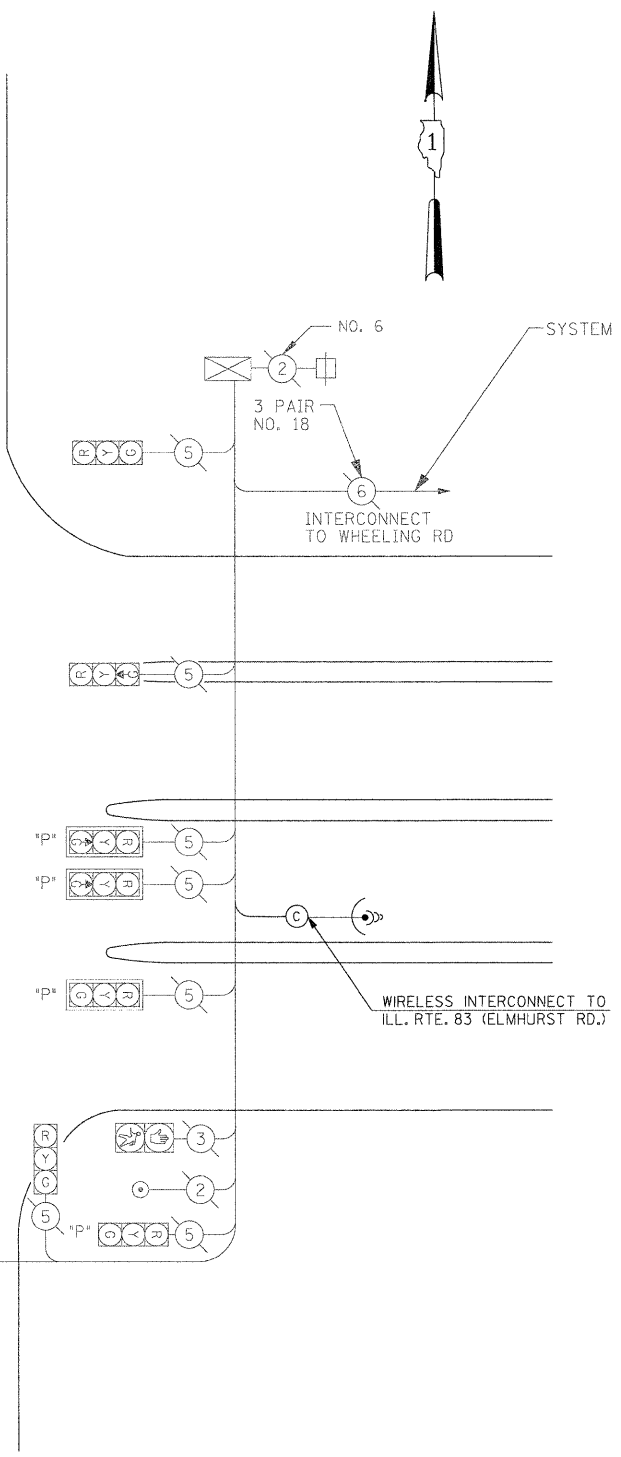
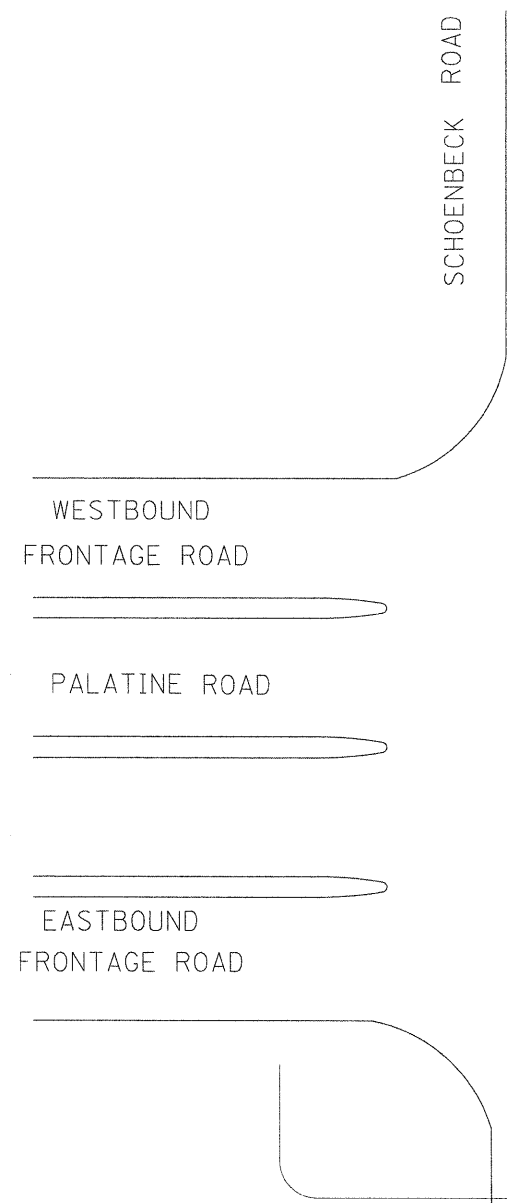


2



CABLE PLAN LEGEND

- | EXISTING | PROPOSED |   |
|----------|----------|---|
|          |          | 8" (200mm) TRAFFIC SIGNAL SECTION   |
|          |          | 12" (300mm) TRAFFIC SIGNAL SECTION  |
|          |          | 12" (300mm) PEDESTRIAN SIGNAL SECTION   |
|          |          | 12" (300mm) PEDESTRIAN SIGNAL SECTION   |
|          |          | CONTROLLER CABINET  |
|          |          | SERVICE INSTALLATION  |
|          |          | EMERGENCY VEHICLE LIGHT DETECTOR  |
|          |          | CONFIRMATION BEACON   |
|          |          | PUSH-BUTTON DETECTOR  |
|          |          | DENOTES NUMBER OF CONDUCTORS, ALL CABLE NO. 14 EXCEPT AS INDICATED. ALL LOOP DETECTOR CABLE TO BE SHIELDED. |
|          |          | GROUND CABLE IN CONDUIT NO. 6 SOLID COPPER (GREEN)  |
|          |          | FIBER OPTIC CABLE IN CONDUIT NO. 62.5/125 2-MM12F & SM12F   |
|          |          | CO-AXIAL CABLE  |
|          |          | SIGNAL FACE WITH BACKPLATE. *P* INDICATES PROGRAMMED HEAD.  |
|          |          | GROUND ROD AT HANDHOLE, DOUBLE HANDHOLE, OR CONTROLLER  |
|          |          | GROUND ROD AT POST OR MAST ARM POLE   |
|          |          | GROUND ROD AT ELECTRIC SERVICE INSTALLATION   |
|          |          | WIRELESS INTERCONNECT ANTENNA   |

PARTIAL CABLE PLAN  
NOT TO SCALE

FOR ALL TEMPORARY AND PERMANENT INTERCONNECT QUANTITIES SEE SHEET NO. 18L "INTERCONNECT SCHEMATIC PLAN"

Added 10-9-09

|                      |                    |            |           |   |   |   |                  |              |              |           |  |
|----------------------|--------------------|------------|-----------|---|---|---|------------------|--------------|--------------|-----------|--|
| FILE NAME =          | USER NAME = #USER# | DESIGNED - | REVISED - | <b>STATE OF ILLINOIS<br/>DEPARTMENT OF TRANSPORTATION</b> | PARTIAL TRAFFIC SIGNAL CABLE PLAN<br>SCHOENBECK ROAD AT PALATINE ROAD | F.A.P. RTE.                                     | SECTION          | COUNTY       | TOTAL SHEETS | SHEET NO. |  |
| #FILEL#              |                    | DRAWN -    | REVISED - |   |   | 2710  | (1213 AND 3222)R | COOK         | 39           | 18F       |  |
| PLOT SCALE = #SCALE# |                    | CHECKED -  | REVISED - |   |   | CONTRACT NO. 60E53                              |                  |              |              |           |  |
| PLOT DATE = #DATE#   |                    | DATE -     | REVISED - |   |   | FED. ROAD DIST. NO. 1 ILLINOIS FED. AID PROJECT |                  |              |              |           |  |
|                      |                    |            |           |   | SCALE: NONE   | SHEET NO. OF SHEETS                             |                  | STA. TO STA. |              |           |  |