

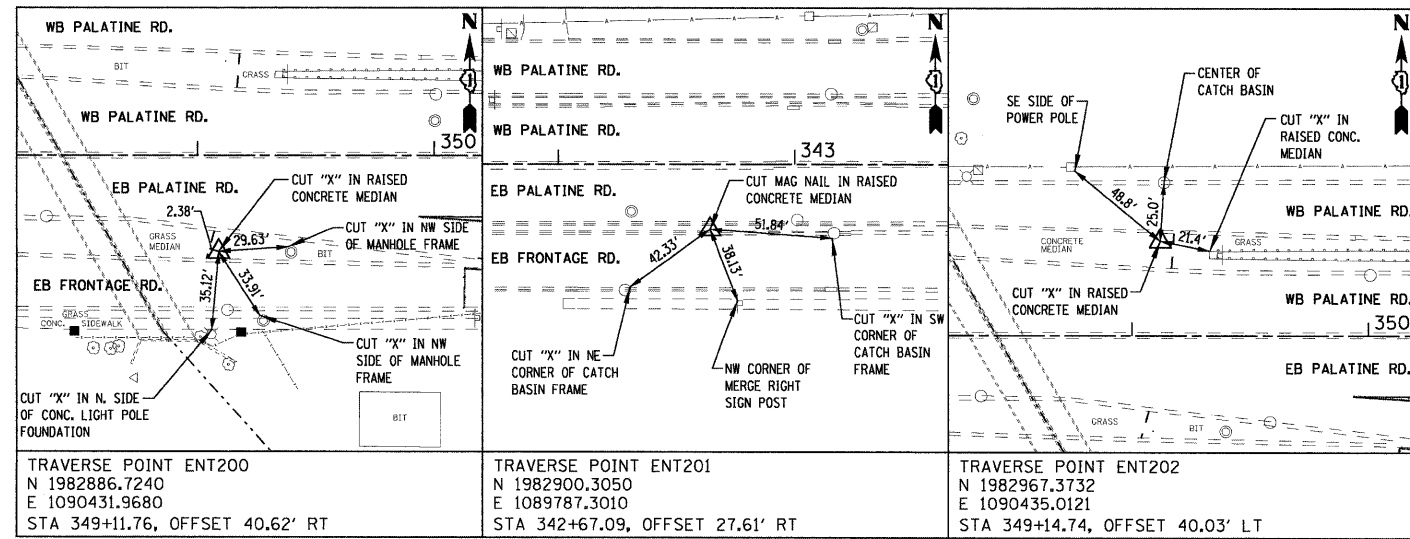
☐ PALATINE ROAD

| STATION   | NORTHING     | EASTING      |
|-----------|--------------|--------------|
| 345+00.00 | 1982927.7066 | 1090020.2394 |
| 347+97.15 | 1982927.4442 | 1090317.3881 |
| 348+91.83 | 1982927.3606 | 1090412.0722 |
| 356+00.00 | 1982926.7351 | 1091120.2389 |

**BENCHMARKS**

- BM20P CHISLED "□" IN SE CORNER OF CONC. TRAFFIC CONTROL BOX BASE LOCATED AT THE N. SIDE OF PALATINE ROAD AND SCHOENBECK ROAD, STA. 338+23 O/S 65.8' LT. ELEV = 675.59
- BM21P CHISLED "X" IN NW BOLT OF "SCHOENBECK RD EXIT" SIGN LOCATED ON THE N. SIDE OF PALATINE ROAD AND WEST OF ELMHURST ROAD, STA. 349+36 O/S 35.4' LT. ELEV = 664.44

NOTE: BENCHMARK ELEVATIONS ARE ON THE NATIONAL GEODETIC VERTICAL DATUM 1929 (NGVD29). ALL MEASUREMENTS ARE IN US SURVEY FEET AND DECIMAL PARTS THEREOF. BASIS OF BEARING IS THE ILLINOIS STATE PLANE COORDINATE SYSTEM EAST ZONE (1201) (NAD83) ADJUSTED TO GROUND.



TRAVERSE POINT TIE DIAGRAMS (NOT TO SCALE)