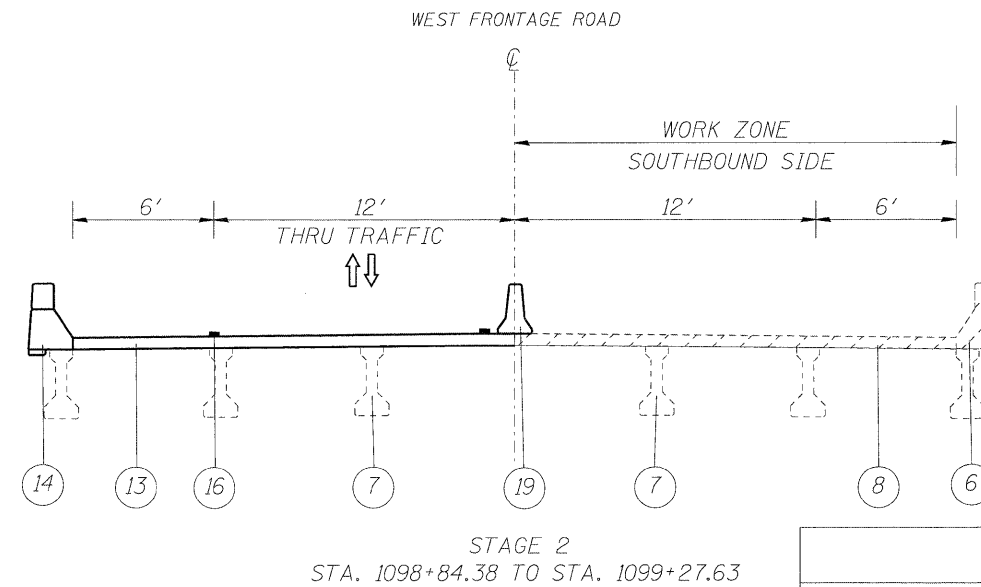
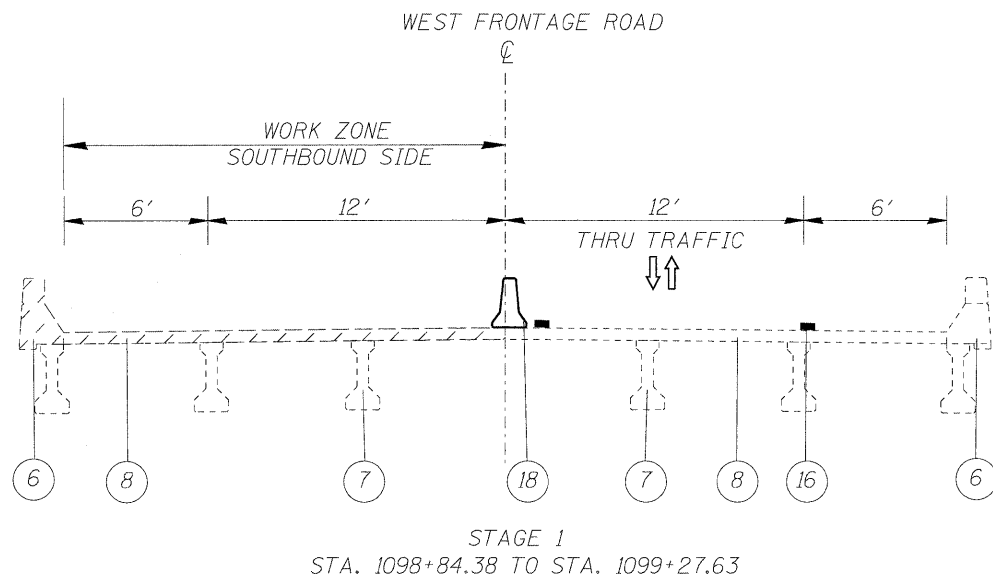
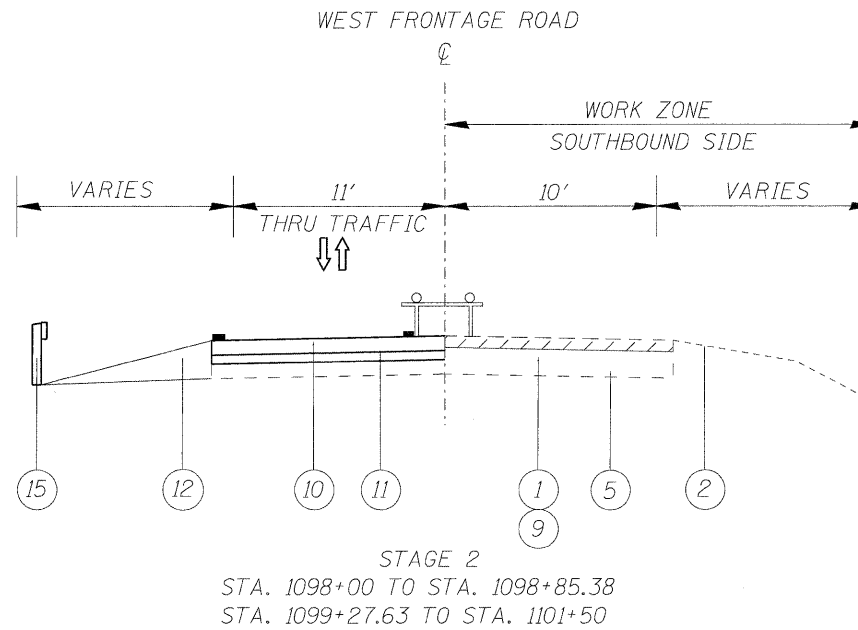
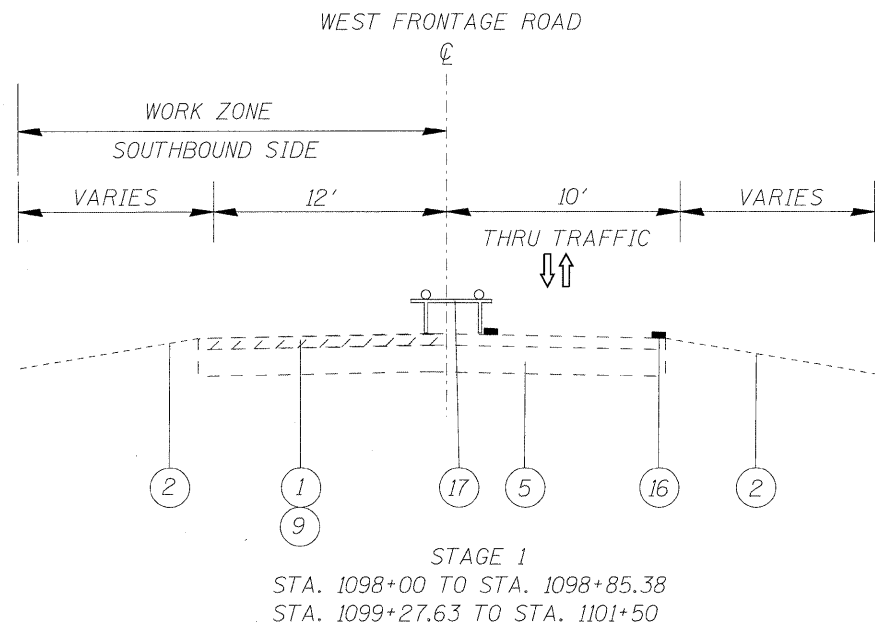


LEGEND

- ① EXISTING HMA PAVEMENT 1 1/2"
- ② EXISTING SHOULDER
- ③ EXISTING BALLARD (STA. 1098 TO STA. 1098+60)
- ④ EXISTING HMA SHOULDER (STA. 1098+23 TO STA. 1098+48.69)
- ⑤ EXISTING GRAVEL OR CRUSHED STONE BASE COURSE, 7"
- ⑥ EXISTING CONCRETE PARAPETS
- ⑦ EXISTING STEEL BEAMS
- ⑧ EXISTING REINFORCED CONCRETE DECK, 6.5"
- ⑨ PROPOSED HMA SURFACE REMOVAL, 2 1/2"
- ⑩ PROPOSED HMA SURFACE CSE., MIX "D", N70, 1 1/2", (IL-9.5mm)
- ⑪ PROPOSED LEVELING BINDER, N70, 1"
- ⑫ PROPOSED AGGREGATE WEDGE SHOULDER, TYPE B
- ⑫A PROPOSED HMA SHOULDER, 4" (STA. 1098+11.35 TO 1098+48.69)
- ⑬ PROPOSED 7.5' REINFORCED CONCRETE DECK
- ⑬A PROPOSED TEMPORARY PAVEMENT, 5 3/4"
- ⑭ F SHAPE PARAPETS
- ⑮ PROPOSED STEEL PLATE BEAM GUARD RAIL, TYPE A
- ⑯ WET REFLECTIVE TEMPORARY TAPE, TYPE III, 4" WHITE
- ⑰ TYPE III BARRICADE WITH FLASHING LIGHTS (AT 25' C-C)
- ⑱ TEMPORARY CONCRETE BARRIER
- ⑲ RELOCATED TEMPORARY CONCRETE BARRIER



EARTHWORK				
STATION	EARTH EXCAVATION (CU YD)	EMBANKMENT (CU YD)	ADJ EXCAVATION 15% (CU YD)	BALANCE (CU YD)
1097+20 TO 1098+35.89	40	0	6	34
1099+76 TO 1101+35.89	40	0	6	34
1098+35.89 To 1098+60	9.3	0	1.4	7.9
1099+50 TO 1099+76.42	9.3	0	1.4	7.9