

**TEMPORARY CABLE LEGEND**

- ⑤ - INDICATES NUMBER OF CONDUCTORS IN CABLE. ALL CONDUCTORS TO BE NUMBER 14 AWG WIRE UNLESS OTHERWISE NOTED.
- |   |
|---|
| R |
| Y |
| G |

 - SIGNAL FACE
- ←S- TEMPORARY GROUND ROD AT POST OR MAST ARM POLE
- ←C- TEMPORARY GROUND ROD AT CONTROLLER

**CONSTRUCTION NOTES**

- ① THE PHASING SHALL BE DEACTIVATED AS REQUIRED DURING CONSTRUCTION STAGING.
- ② LED SIGNAL HEADS SHALL BE USED FOR ALL TEMPORARY TRAFFIC SIGNALS.

**TEMPORARY TRAFFIC SIGNAL LEGEND**

- ◀ - TEMPORARY TRAFFIC SIGNAL HEAD SPAN WIRE MOUNTED ORIGINAL LOCATION
- ◀ - TEMPORARY TRAFFIC SIGNAL HEAD SPAN WIRE MOUNTED SECONDARY LOCATION
- ⊗ - TEMPORARY WOOD POLE (CLASS 5 OR BETTER) 45 FOOT MINIMUM
- ⊠ - TEMPORARY CONTROLLER CABINET
- - TEMPORARY SPAN WIRE, TETHER WIRE, AND CABLE
- - TEMPORARY SERVICE INSTALLATION
- ⚡ - EMERGENCY VEHICLE LIGHT DETECTOR
- - CONFIRMATION BEACON
- - VEHICLE DETECTOR, INDUCTION LOOP
- CT - COMMON TRENCH
- UD - UNIT DUCT
- (T/P) - G.S. CONDUIT IN TRENCH (T) OR PUSHED (P)
- - HANDHOLE
- ▣ - HEAVY DUTY HANDHOLE
- Ⓜ - VIDEO DETECTOR SENSOR
- Ⓟ - UN-INTERRUPTABLE POWER SUPPLY (UPS)
- ▨ - VIDEO DETECTION ZONE

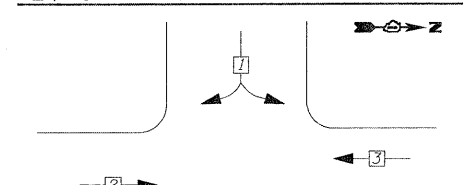
**RESTORATION OF WORK AREA**

RESTORATION OF THE TRAFFIC SIGNAL WORK AREA SHALL BE INCIDENTAL TO THE RELATED PAY ITEM SUCH AS FOUNDATION, CONDUIT, HANDHOLE, TRENCH AND BACKFILL, ETC., AND NO EXTRA COMPENSATION SHALL BE ALLOWED. ALL ROADWAY SURFACES SUCH AS SHOULDERS, MEDIANS, SIDEWALKS, PAVEMENT, ETC. SHALL BE REPLACED IN KIND. ALL DAMAGE TO MOWED LAWNS SHALL BE REPLACED WITH AN APPROVED SOD, AND ALL DAMAGE TO UNMOWED FIELDS SHALL BE SEEDED IN ACCORDANCE WITH STANDARD SPECIFICATIONS 252 AND 250 RESPECTIVELY.

**SEQUENCE OF OPERATION**

MOVEMENT	1		2		3		FLASH
PHASE	1	2A	2B	3	4A	4B	5
INTERVAL	1	2	3	4	5	6	7
CHANGE TO	1	2	3	1, 3	1, 2	1, 2	
SHEPLEY RD	G	Y	R	R	R	R	R
W. FRONTAGE RD	R	R	R	G	Y	R	R
W. FRONTAGE RD	R	R	R	R	R	R	R

**TEMPORARY CONTROLLER SEQUENCE**

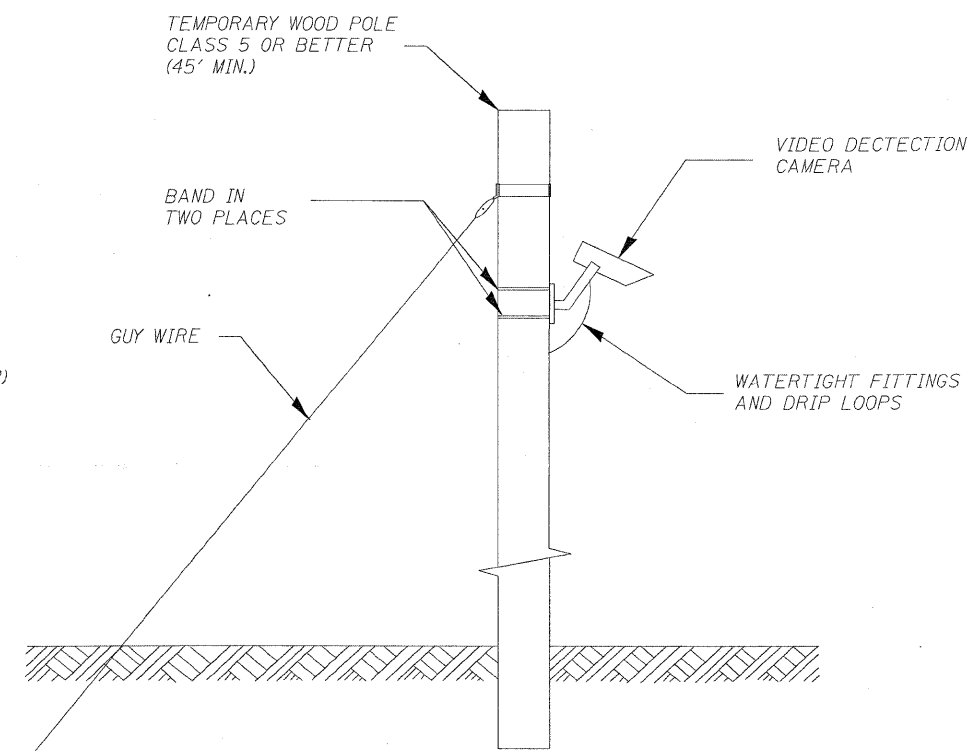


**TEMPORARY PHASE DESIGNATION DIAGRAM**

STAGE 1 AND STAGE 2

**LEGEND**

- ◀ - DUAL ENTRY PHASE



**TEMPORARY VIDEO DETECTION MOUNTING DETAIL**

NOT TO SCALE



**I.D.O.T. TRAFFIC SIGNAL INSTALLATION ELECTRICAL SERVICE REQUIREMENTS**

TYPE	NO. LAMPS	WATTAGE INCAND	WATTAGE LED	% OPERATION	TOTAL WATTAGE
SIGNAL (RED)	7	135	17	0.50	59.50
(YELLOW)	7	135	25	0.25	43.75
(GREEN)	7	135	15	0.25	26.25
VIDEO CAMERA	3	15	1	1.00	45.00
CONTROLLER	1	100	100	1.00	100.00
<b>TOTAL =</b>					<b>274.50</b>

ENERGY COST TO: ILLINOIS DEPARTMENT OF TRANSPORTATION  
 201 WEST CENTER COURT  
 SCHAUMBURG, ILLINOIS 60196-1096  
 ENERGY SUPPLY CONTACT: MR. DALE BALLINGER  
 PHONE: 815 724 5717  
 COMPANY: COM. EDISON

FOUNDATION (DEPTH)	FT. (m)	CABLE SLACK	FT. (m)	VERTICAL	FT. (m)
TYPE A - POST	4 (0.2)	HANHOLE	6.5 (2.0)	ALL FOUNDATIONS	3.5 (1.0)
D - CONTROLLER	4 (0.2)	DOUBLE HANHOLE	13 (4.0)	MAST ARM (L) POLE	20'+L-2' = (6m+L-0.6m) =
E - M. ARM POLE		SIGNAL POST	2 (1.0)	BRACKET MOUNTED	13 (0.5)
24" (600 mm)	10 (3.0)	CONTROLLER CAB.	1 (0.5)	PED. PUSHBUTTON	4 (1.2)
30" (750 mm)	10 (3.0)	FIBER OPTIC	13 (4.0)	ELECTRIC SERVICE	13.5 (4.1)
36" (900 mm)	15 (4.6)	ELECTRIC SERVICE	1 (0.5)	SERVICE TO GROUND	13.5 (4.1)
		GROUND CABLE	1 (0.5)	POST MOUNTED	6 (1.8)

**LOCO, INC.**  
 CONSULTING ENGINEERS  
 1550 WALL ST., SUITE 222  
 NAPERVILLE, ILLINOIS 60563 PH: 630/577-9100

DESIGNED - MJY	REVISED - ---
DRAWN - ST	REVISED - ---
CHECKED - MJY	REVISED - ---
DATE - 09/09/2009	REVISED - ---

**STATE OF ILLINOIS  
 DEPARTMENT OF TRANSPORTATION**

**TEMPORARY TRAFFIC SIGNAL AND CABLE PLAN  
 I-55 WEST FRONTAGE ROAD OVER (I & M) CANAL**

SCALE: 1" = 20' SHEET NO. 13 OF 38 SHEETS STA. 1097+00 TO STA. 1101+50

F.A.I. RTE.	SECTION	COUNTY	TOTAL SHEETS	SHEET NO.
55	86 B-3-R	WILL	368	13
D-91-097-09			CONTRACT NO. 60F53	
FED. ROAD DIST. NO. - [ILLINOIS] FED. AID PROJECT				