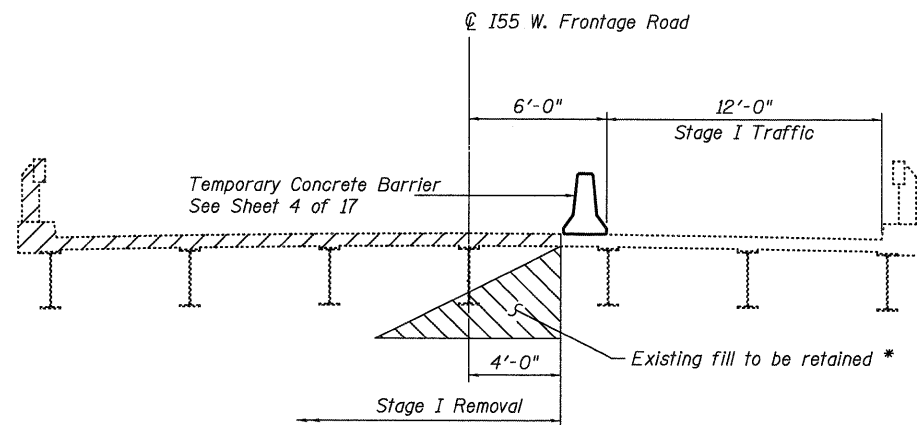
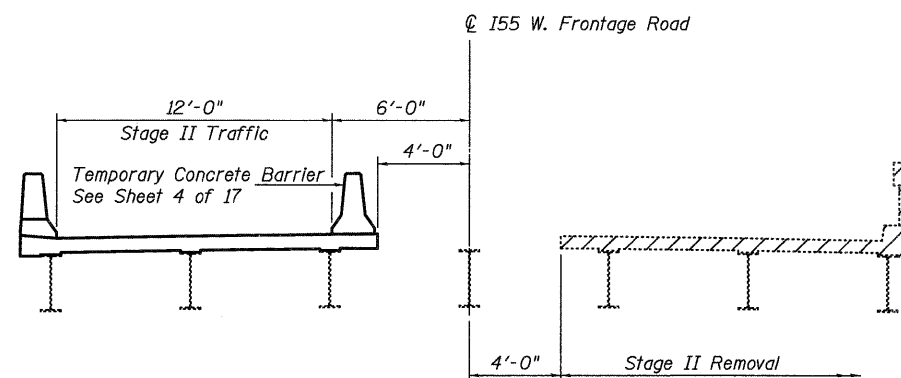


STATE OF ILLINOIS  
DEPARTMENT OF TRANSPORTATION

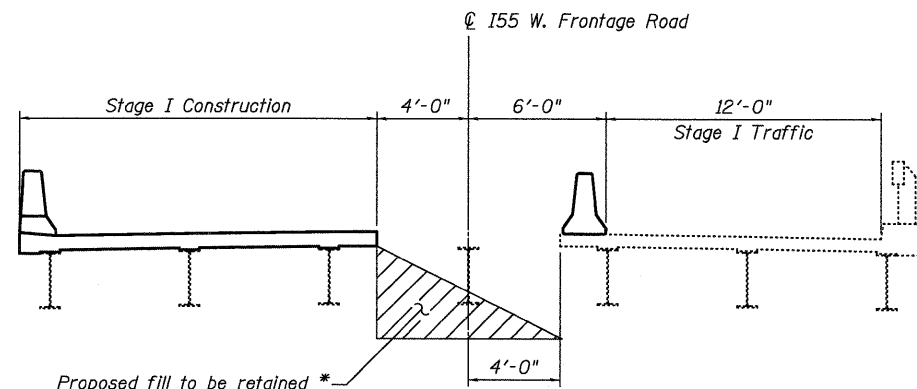


**STAGE I REMOVAL**

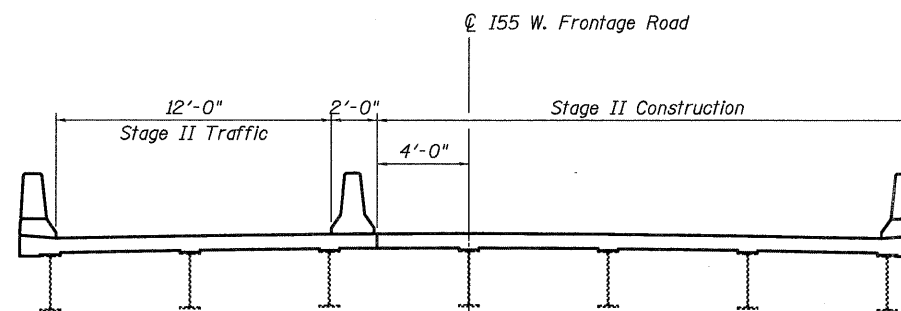


**STAGE II REMOVAL**

Notes:  
Hatched areas indicates Removal of Existing Concrete Deck.  
All cross section are looking North.  
See Roadway Plans for quantity of Temporary Concrete Barrier.



**STAGE I CONSTRUCTION**



**STAGE II CONSTRUCTION**

\* The excavation and the Porous Granular Embankment (Special) behind the abutments shall be sloped perpendicular to the stage construction line. The Contractor shall provide a system to retain the existing and proposed fill behind the concrete abutment diaphragms when the diaphragms are removed. The proposed system shall be submitted to the Engineer for approval. The system will not be removed for payment separately, but shall be included in the cost of "Removal of Existing Concrete Deck".

**STAGE CONSTRUCTION DETAILS  
INTERSTATE 55 W. FRONTAGE ROAD  
OVER I & M CANAL & STATE TRAIL  
F.A.I. ROUTE 55 - SECTION 86B-3-R  
WILL COUNTY  
STRUCTURE NO. 099-0036  
PUBLIC WATERS**

DESIGNED - SDS
CHECKED - CWC
DRAWN - DLH
CHECKED - SDS/CEH

**WHKS & CO.**  
ENGINEERING

7018 KINGSMILL CT.,  
SPRINGFIELD, IL  
(217) 483-9457  
DESIGN FIRM #184001036

SHEET NO. 3	F.A.I. RTE.	SECTION	COUNTY	TOTAL SHEETS	SHEET NO.
	55	86B-3-R	WILL	38	16
17 SHEETS	S.N. 099-0036		CONTRACT NO. 60F53		
	FED. ROAD DIST. NO.	ILLINOIS	FED. AID PROJECT		