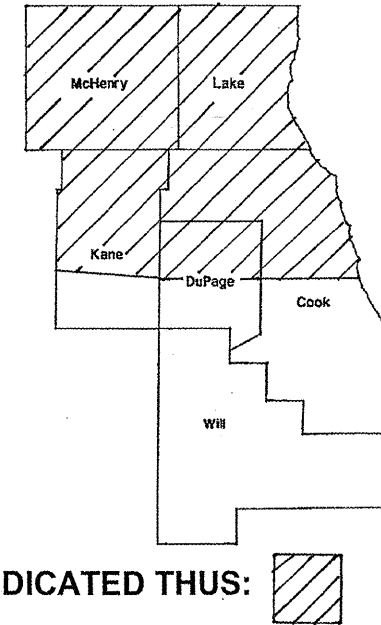


ROUTE	SECTION	COUNTY	TOTAL SHEETS	SHEET NUMBER
VARIOUS	2009-082 I	VARIOUS	3	1

STATE OF ILLINOIS
DEPARTMENT OF TRANSPORTATION
DIVISION OF HIGHWAYS
DISTRICT ONE
PROPOSED HIGHWAY PLANS
ROUTE: VARIOUS (NORTH)
SECTION 2009-082 I
WEED CONTROL SELECTIVE AND NON-SELECTIVE
VARIOUS COUNTIES
C-91-880-09

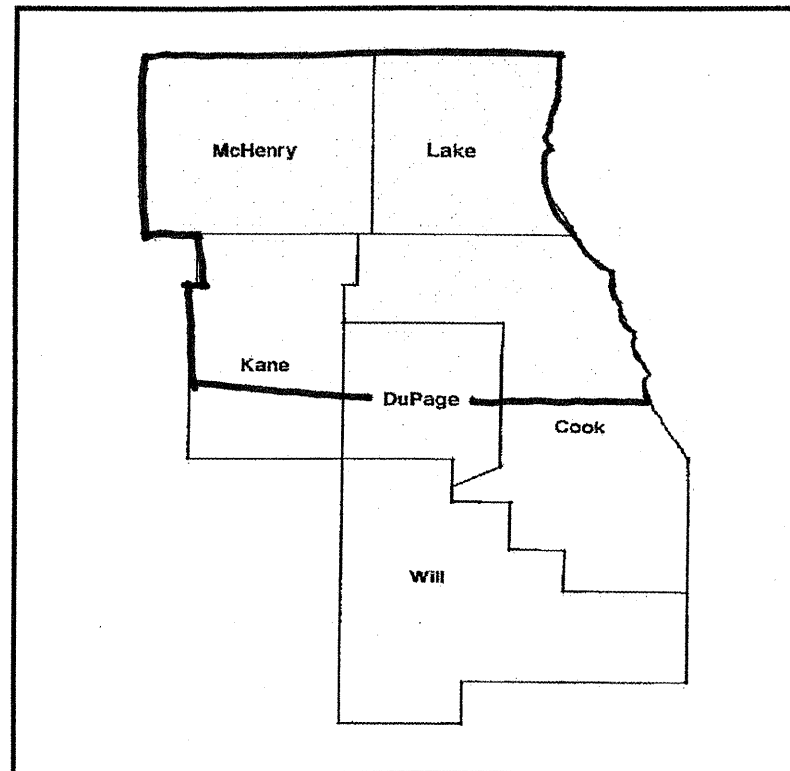
CONTRACT 60I24
D-91-880-09



LOCATION OF IMPROVEMENT INDICATED THUS: 

FOR INDEX OF SHEETS SEE PAGE 2

**IMPROVEMENT IS IN VARIOUS
LOCATIONS WITHIN DISTRICT
ONE**



DISTRICT ONE BUREAU OF MAINTENANCE: J. STUMPNER
MAINTENANCE LANDSCAPE DESIGNER: R. WANNER / M. DEL ROSARIO (847) 705-4171

STATE OF ILLINOIS
DEPARTMENT OF TRANSPORTATION
DIVISION OF HIGHWAYS
SUBMITTED: August 20 2009
Diane M. O'Keefe
DISTRICT ENGINEER
October 2 2009
Charles J. Ingersoll
ENGINEER OF DESIGN AND ENVIRONMENT
October 2 2009
Christine M. Reed
DIRECTOR, DIVISION OF HIGHWAYS

**PRINTED BY THE AUTHORITY
OF THE STATE OF ILLINOIS**

J.U.L.I.E.: JOINT UTILITY LOCATION
INFORMATION FOR EXCAVATION
(800) 892-0123

CONTRACT 60I24

INDEX OF SHEETS

- 1 COVER SHEET
- 2 INDEX OF SHEETS
GENERAL NOTES
SUMMARY OF QUANTITIES
STATE STANDARDS
- 3 TC- 17

ROUTE	SECTION	COUNTY	TOTAL SHEETS	SHEET NUMBER
VARIOUS (NORTH)	2009-082 I	VARIOUS	3	2

CONTRACT 60124

SUMMARY OF QUANTITIES

CODE NUMBER	DESCRIPTION	UNIT	TOTAL	Y003	Y003
				CONTRACT MAINT	FORMAL CONTRACTS
X0326702	PRAIRIE WEED CONTROL	ACRE	20	20	0
X0326701	WEED CONTROL, BROADLEAF IN TURF	POUND	11	0	11
25000750	MOWING	ACRE	522	522	0
67100100	MOBILIZATION	L SUM	1	1	0
X0322324	WEED CONTROL, TEASEL	POUND	12	0	12
X0322326	WEED CONTROL, THISTLE	POUND	48	0	48
X0322856	WEED CONTROL, NON-SEL. AND NON-RESIDUAL	GALLON	30	30	0
X0325896	WEED CONTROL, TOTAL VEGETATION	GALLON	90	90	0

GENERAL NOTES

ALL SPRAY LOCATIONS WILL BE DIRECTED BY THE ENGINEER.

TELAR XP AND OVERDRIVE ARE TO BE TANK MIXED TOGETHER AND SPRAYED ON TEASEL AND THISTLE INFESTED AREAS.

HERBICIDE PLATEAU FOR PRAIRIE WEED CONTROL AND WEED CONTROL, BROADLEAF IN TURF WILL BE PROVIDED BY IDOT.

FOR EXPRESSWAYS THE CONTRACTOR SHALL CONTACT THE BUREAU OF TRAFFIC FOR TRAFFIC CLEARANCE NO LATER THAN 11:00 A.M THE DAY BEFORE WORK BEGINS.

CONTRACTOR SHALL REPLACE ANY SIGNAGE, REFLECTORS, AND PAVEMENT MARKINGS, THAT ARE AFFECTED BY THIS PROJECT, TO ITS ORIGINAL CONDITION AND LOCATION. THIS WORK SHALL BE RESTORED AT THE CONTRACTOR'S OWN EXPENSE. NO ADDITIONAL COMPENSATION WILL BE ALLOWED.

STATE STANDARDS

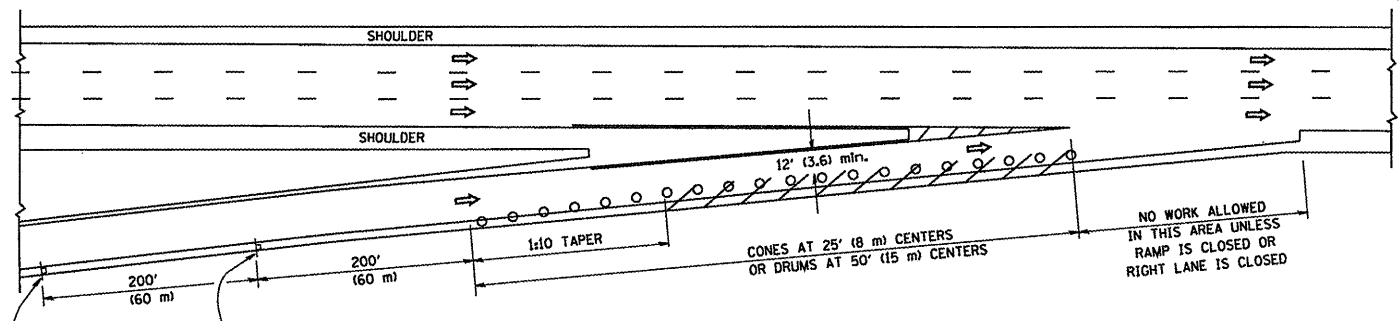
- 701101-02
- 701311-03
- 701426-03
- 701901-01

ILLINOIS DEPARTMENT OF TRANSPORTATION

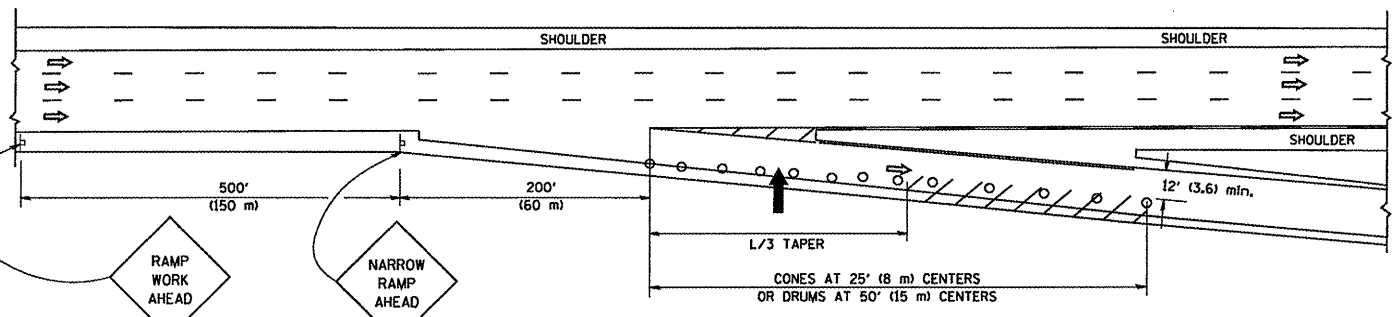
WEED CONTROL & MOWING

Rev 1

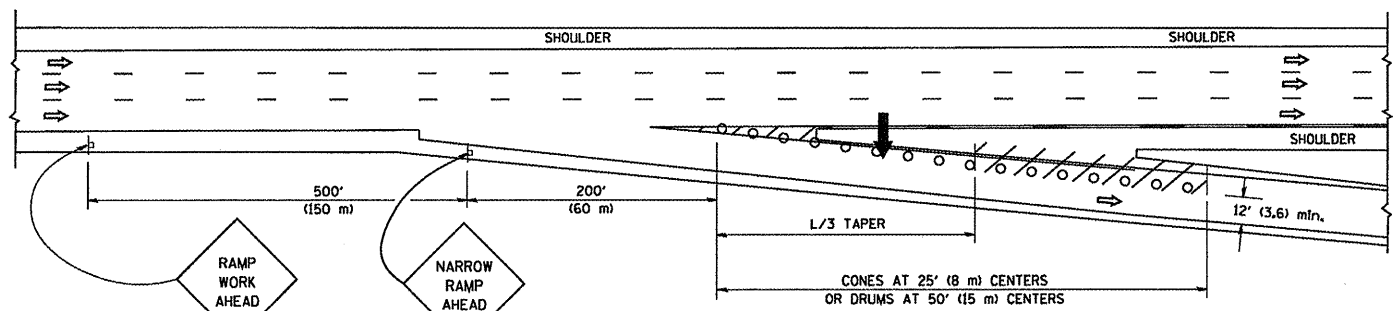
PARTIAL RAMP CLOSURE DETAILS



TYPICAL ENTRANCE RAMP



TYPICAL EXIT RAMP



TYPICAL EXIT RAMP

SYMBOLS

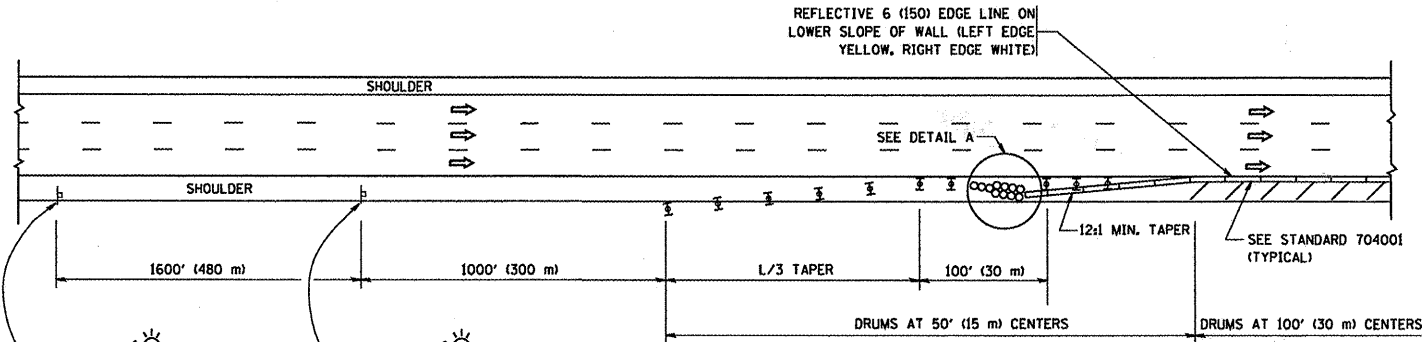
- ➔ ARROWBOARD
- ▨ WORK AREA
- ┆ SIGN ON PORTABLE OR PERMANENT SUPPORT
- FLAGGER WITH CONTROL SIGN
- ⊠ TYPE II BARRICADE, DRUM OR VERTICAL BARRICADE WITH STEADY BURN MONO-DIRECTIONAL LIGHT
- CONE, DRUM OR BARRICADE

GENERAL NOTES

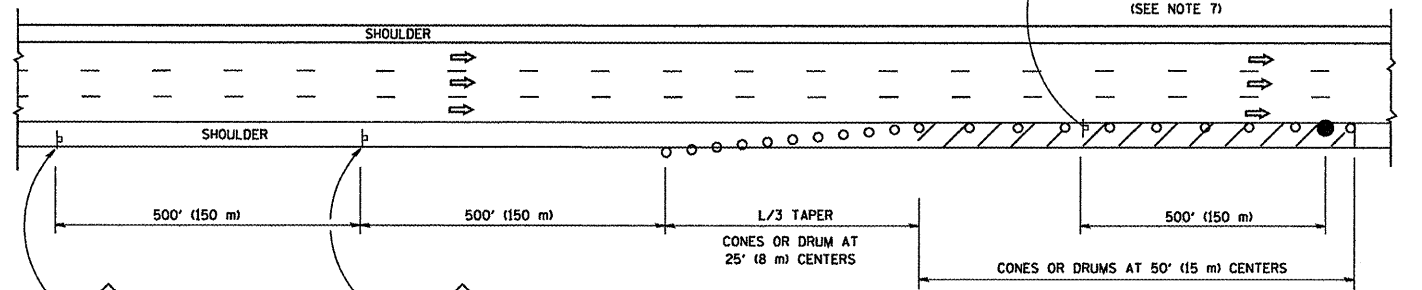
1. THE "L" DISTANCE EQUALS:

SPEED LIMIT	FORMULAS
45 mph (80 km/h) OR GREATER	METRIC ENGLISH $L=0.65(W)(S)$ $L=(W)(S)$
	W = WIDTH OF OFFSET IN FEET (METERS) S = NORMAL POSTED SPEED MPH (KM/H)
2. PLASTIC DRUMS WITH HIGH PERFORMANCE REFLECTIVE SHEETING AND STEADY BURNING LIGHTS ARE REQUIRED FOR ALL NIGHTTIME CLOSURES.
3. ALL SIGNS SHALL BE POST MOUNTED IF THE CLOSURE TIME EXCEEDS FOUR DAYS.
4. FLASHING LIGHTS SHALL BE USED DURING THE HOURS OF DARKNESS AND SHALL BE INSTALLED ABOVE THE FIRST TWO SETS OF SIGNS.

SHOULDER CLOSURE DETAILS

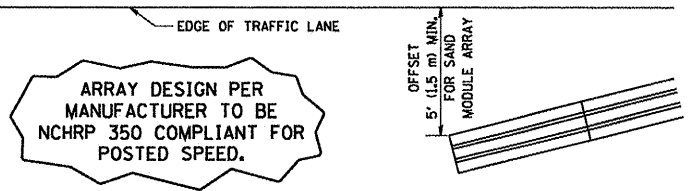


PERMANENT SHOULDER CLOSURE



DAYTIME SHOULDER CLOSURE

THIS DETAIL IS USED WHERE:
1. VEHICLES, EQUIPMENT, WORKERS OR THEIR ACTIVITIES ENCOACH IN AN AREA CLOSER THAN 15' (4.5 m) TO THE EDGE OF PAVEMENT FOR A PERIOD IN EXCESS OF 15 MINUTES.



DETAIL "A"
IMPACT ATTENUATOR, TEMPORARY
(SEE NOTE 5)

ALL DIMENSIONS ARE IN INCHES (MILLIMETERS) UNLESS OTHERWISE SHOWN.

FILE NAME =	USER NAME = geglienobt
W:\distsd\22x34\17.dgn	

DESIGNED -	REVISD - J.A.F. 12-02
DRAWN - D.W.S.	REVISD - 04-03
CHECKED -	REVISD - J.A.F. 12-06
DATE - 11-96	REVISD - S.P.B. 01-07

PLLOT SCALE = 50.0000' / IN.	
PLLOT DATE = 1/4/2008	

DESIGNED -	REVISD - J.A.F. 12-02
DRAWN - D.W.S.	REVISD - 04-03
CHECKED -	REVISD - J.A.F. 12-06
DATE - 11-96	REVISD - S.P.B. 01-07

**STATE OF ILLINOIS
DEPARTMENT OF TRANSPORTATION**

TRAFFIC CONTROL DETAILS FOR FREEWAY SHOULDER CLOSURES AND PARTIAL RAMP CLOSURES	
SCALE: NONE	SHEET NO. 1 OF 1 SHEETS STA. TO STA.

F.A. RTE.	SECTION	COUNTY	TOTAL SHEETS	SHEET NO.
	2009-0821	VARIOUS	3	3
	TC-17			CONTRACT NO. 60121
FED. ROAD DIST. NO. 1 ILLINOIS FED. AID PROJECT				