

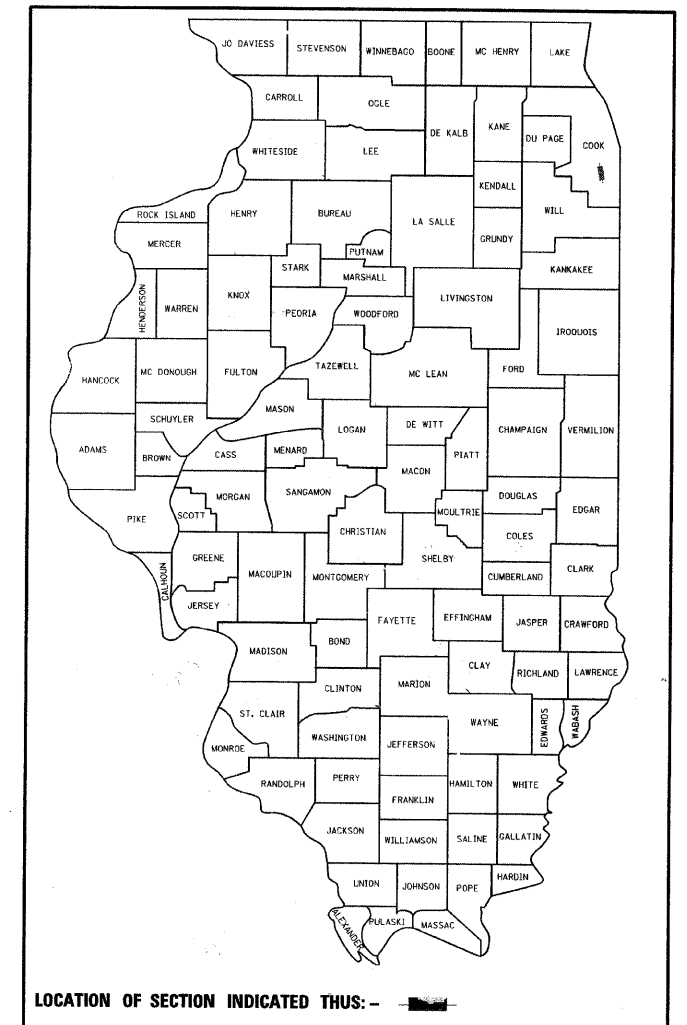
F.A.U. RTE.	SECTION	COUNTY	TOTAL SHEETS	SHEET NO.
2843	3249B-R	COOK	64	1

CONTRACT NO. 62539
D-91-358-02

STATE OF ILLINOIS
DEPARTMENT OF TRANSPORTATION
DIVISION OF HIGHWAYS

PROPOSED
HIGHWAY PLANS

F.A.U. 2843 - DIXIE HIGHWAY
OVER BUTTERFIELD CREEK
BRIDGE REPLACEMENT
SECTION 3249B-R
COOK COUNTY
C-91-358-02
PROJECT NO. BRM-2843(007)



RME Rubinos & Mesia Engineers, Inc.
200 S. Michigan Ave, Suite 1500 Chicago IL 60604-2482
T: 312 870 6600 F: 312 663 1473

N
↑

Mohsen Farahany
Licensed Professional Engineer
State of Illinois
Lic. No. 62-43875
Expires: 11-30-2009
Pages: 1-13, 21, 49, 60-64

STATE OF ILLINOIS
DEPARTMENT OF TRANSPORTATION
DIVISION OF HIGHWAYS

SUBMITTED June 24 2009

Dian O'Keefe
DEPUTY DIRECTOR OF HIGHWAYS, REGION ENGINEER

August 14, 2009
Charles G. Ingersoll
ENGINEER OF DESIGN AND ENVIRONMENT

August 14, 2009
Christine M. Reed
DIRECTOR OF HIGHWAYS, CHIEF ENGINEER

Mohsen Farahany
Licensed Structural Engineer
State of Illinois
Lic. No. 81-5131
Expires: 11-30-2010
Pages: 27-48

PRINTED BY THE AUTHORITY
OF THE STATE OF ILLINOIS

FOR NUMBER OF SHEETS, SEE SHEET NO. 2

PROJECT LOCATED IN:
VILLAGE OF FLOSSMOOR

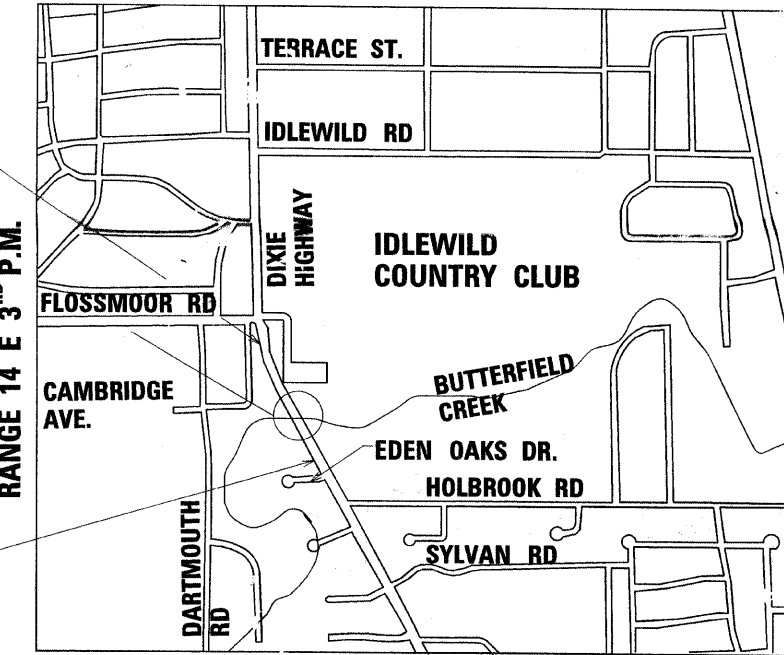
DESIGN CONSULTANT SERVICES PROJECT MANAGER - BRIAN KUTTAB (847)705-4431

DESIGN DESIGNATION:
2160(15) URBAN ARTERIAL 1.59 (FD-20)
TRAFFIC DATA
DIXIE HIGHWAY
DESIGN SPEED = 45 MPH
POSTED SPEED = 40 MPH
DHV 14,000 (2000)
ADT 21,572 (2020)

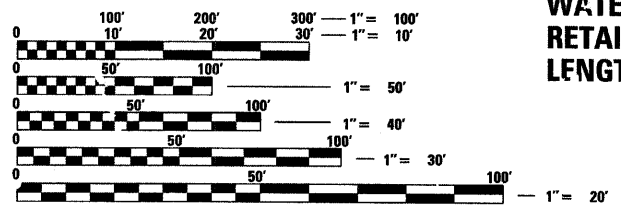
END PROJECT
STA. 84 + 25

DIXIE HIGHWAY OVER BUTTERFIELD CREEK
STA. 78 + 55
STRUCTURE #016-6775 (EXISTING)
STRUCTURE #016-7946 (PROPOSED)
LENGTH = 165'-8"
BRIDGE REPLACEMENT
NEW APPROACH ROADWAY
WATERMAIN AND SANITARY SEWER WORK
RETAINING WALL NO. 06-W962 (PROPOSED)
LENGTH = 97'-0"

BEGIN PROJECT
STA. 73 + 50



BLOOM TOWNSHIP T. 35 N
LOCATION MAP
SCALE: 1" = 750'
GROSS & NET LENGTH OF PROJECT = 1075 FEET (0.20 MILE)



FULL SIZE PLANS HAVE BEEN PREPARED USING STANDARD ENGINEERING SCALES. REDUCED SIZED PLANS WILL NOT CONFORM TO STANDARD SCALES. IN MAKING MEASUREMENTS ON REDUCED PLANS, THE ABOVE SCALES MAY BE USED.

J.U.L.I.E.
JOINT UTILITY LOCATION INFORMATION FOR EXCAVATION
1-800-892-0123

CONTRACT NO. 62539