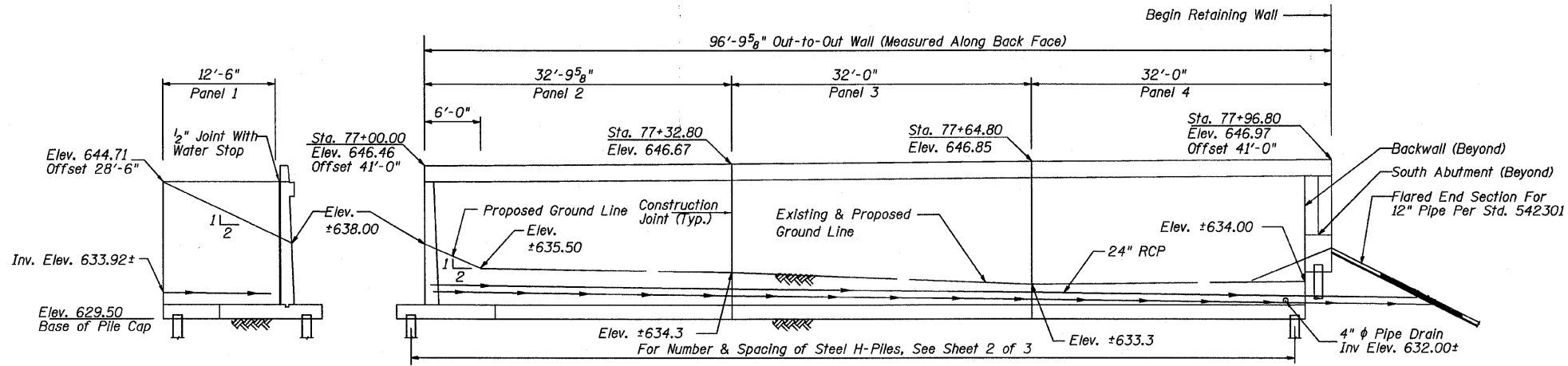
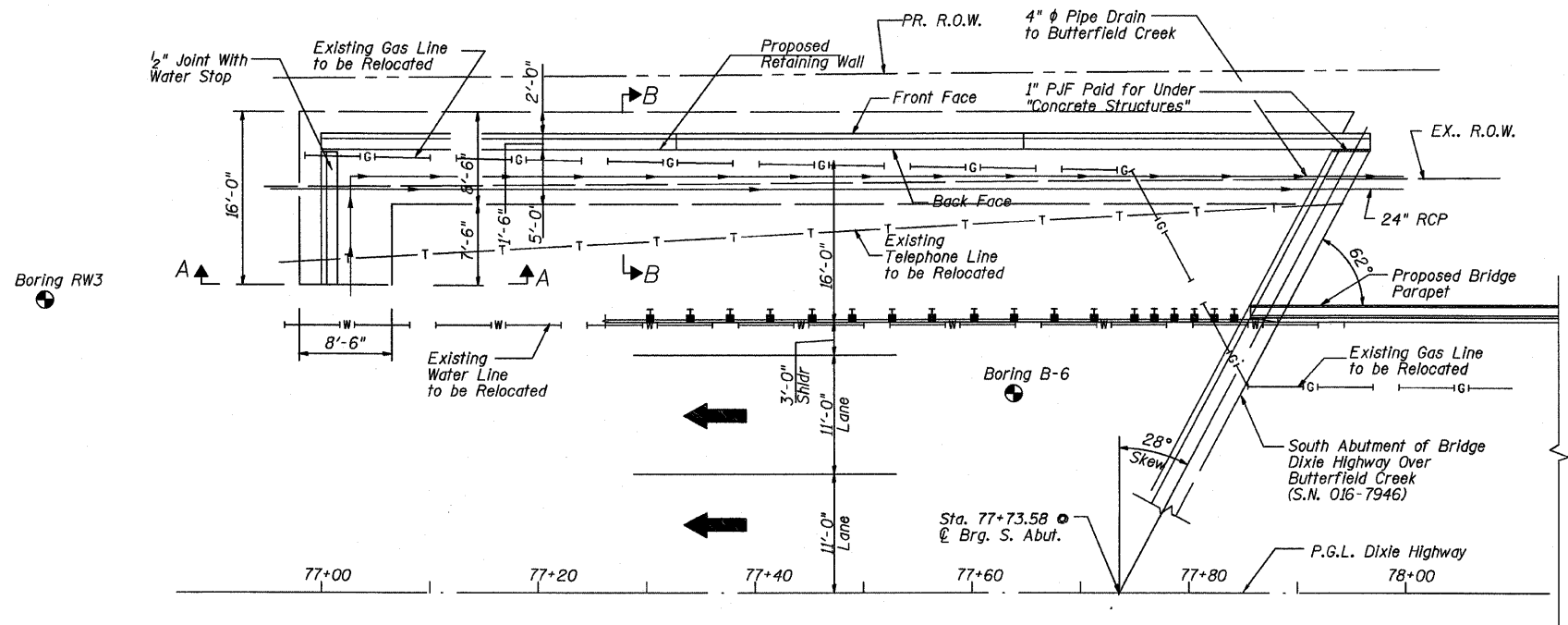


STATE OF ILLINOIS  
DEPARTMENT OF TRANSPORTATION

F.A.R.T.E.	SECTION	COUNTY	TOTAL SHEETS	SHEET NO.
2843	3249B-R	COOK	64	22
FED. ROAD DIST. NO.		ILLINOIS	FED. AID PROJECT	
			Sheet 1 of 3	
			Contract No. 62539	

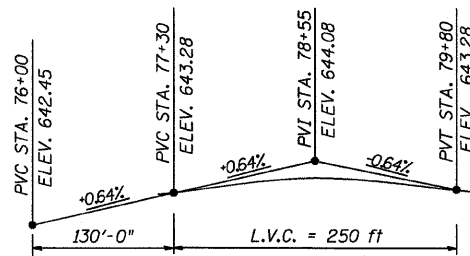


ELEVATION



PLAN

For Section A & B, See Sht 3



PROFILE GRADE OF ROADWAY

DESIGN SPECIFICATIONS  
2002, AASHTO Specifications, 17th Edition

LOADING

Allow 2'-0" Soil Surcharge

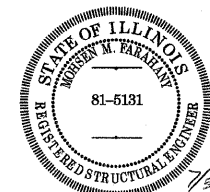
DESIGN STRESSES

FIELD UNITS

$f'_c = 3500$  psi  
 $f_y = 60,000$  psi (Reinf.)

Utility Note:

Prior to Excavation in This Area,  
The Existing Utilities Will Be Field  
Located. The Utilities Interfering With  
The Construction Will Be Relocated as  
Shown on Contract Plans.



Mohsen Farahany  
Licensed Structural Engineer  
State of Illinois  
Lic. No. 81-5131  
Expires: 11-30-2010

APPROVED  
FOR STRUCTURAL ADEQUACY ONLY

Robert E. Anderson (P.E.)  
ENGINEER OF BRIDGES AND STRUCTURES

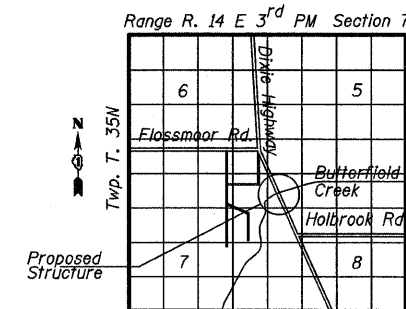
TOTAL BILL OF MATERIAL

ITEMS	UNITS	TOTAL
*Porous Granular Embankment (Special)	Cu. Yd.	180
Structure Excavation	Cu. Yd.	280
Concrete Structures	Cu. Yd.	146
Protective Coat	Sq. Yd.	50
*Reinforcement Bars, Epoxy Coated	POUND	15800
Furnishing Steel Piles HP 12 x 63	FOOT	1560
Driving Piles	FOOT	1560
Test Pile Steel, HP 12 x 63	EACH	1
Pile Shoes	EACH	39
Geocomposite Wall Drain	Sq. Yd.	155
*Pipe Underdrain for Structures 4"	FOOT	110

\*See Special Provisions

GENERAL NOTES

- Reinforcement bars shall conform to the requirements of ASTM A-706 Grade 60. See Special Provisions.
- The contractor shall drive test pile to 110% of the nominal required bearing specified in production locations at substructure specified or approved by the Engineer before ordering the remainder of piles.
- For benchmark information and other relevant notes, see drawings for S.N. #016-7946.
- Existing utilities in conflict with the retaining wall shall be abandoned or relocated according to directions given in plans.
- All wall dimensions are from the front face of the wall.
- All slopes shall be 1:2(max) unless otherwise specified.
- All construction joints shall be bonded.
- Temporary sheet piling is shown on Sheet 1 and 3 of the structural plans for S. N. 016-7946.



LOCATION SKETCH

REVISIONS	
NAME	DATE

GENERAL PLAN, ELEVATION  
& BILL OF MATERIAL

DIXIE HIGHWAY OVER  
BUTTERFIELD CREEK  
F.A.U. ROUTE 2843 SECTION 3249B-R  
STA. 78+55.00  
COOK COUNTY  
STRUCTURE NUMBER 016-W962

SCALE: NOT-TO-SCALE  
DATE 6-30-09

DRAWN BY BV  
DESIGNED BY BS  
CHECKED BY PK



\$FILES \$DATE \$TIMES  
 \$PENTEL \$PLTDRVS