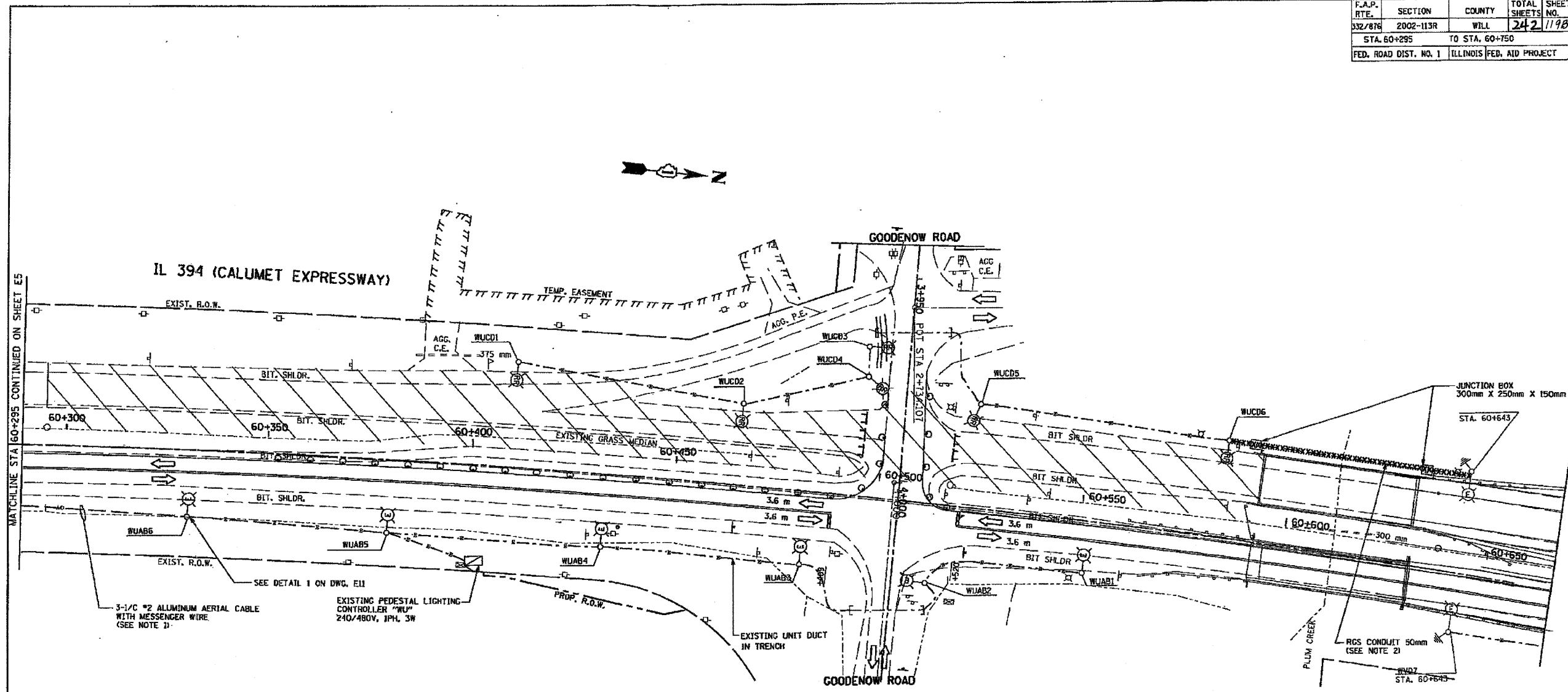


| | | | | |
|-----------------------|-----------|---------------------------|--------------|-----------|
| F.A.P. RTE. | SECTION | COUNTY | TOTAL SHEETS | SHEET NO. |
| 332/876 | 2002-113R | WILL | 242 | 1198 |
| STA. 60+295 | | TO STA. 60+750 | | |
| FED. ROAD DIST. NO. 1 | | ILLINOIS FED. AID PROJECT | | |



3-1/2" ALUMINUM AERIAL CABLE WITH MESSENGER WIRE (SEE NOTE 1)

EXISTING PEDESTAL LIGHTING CONTROLLER "WU" 240V/480V, 1PH, 3W

RCS CONDUIT 50mm (SEE NOTE 2)

NOTES:

- CONNECT AERIAL CABLE TO EXISTING WIRING IN POLE WUAB6 TO POWER TEMPORARY LIGHTING. SEE DETAIL 1 ON DWG. E11.
- REMOVE EXISTING 50mm RCS CONDUIT ALONG BRIDGE STRUCTURE. REMOVE JUNCTION BOXES AT NORTH AND SOUTH OF BRIDGE.
- INSTALL PROPOSED LIGHT POLE FOUNDATIONS, UNIT DUCT, CONDUIT AND PUSHES TO THE WEST SIDE OF IL-394 IN ACCORDANCE WITH DRAWINGS E2 & E3. PRIOR TO REMOVAL AND RELOCATION OF THE EXISTING LIGHTING UNITS SHOWN ON THIS DRAWING.
- REFERENCE DRAWING E2 FOR PROPOSED LIGHTING PLAN.



Peter B. Leonard 7/9/09
Exp. 11/30/09

HOH ASSOCIATES, INC.
2660.05 HOH CAD FILE No. E6.DGN
PLOT SCALE 1 = 1

| REVISIONS | |
|-----------|------|
| NAME | DATE |
| | |
| | |
| | |
| | |
| | |

ILLINOIS DEPARTMENT OF TRANSPORTATION
IL. RTE. 394 AT GOODENOW
STAGE 2
LIGHTING PLAN
SCALE 1:500
DATE 12-4-2005
DRAWN BY MEK
CHECKED BY RER