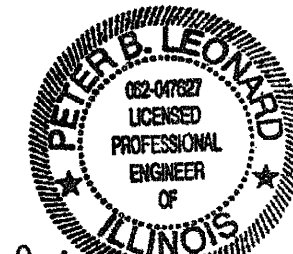
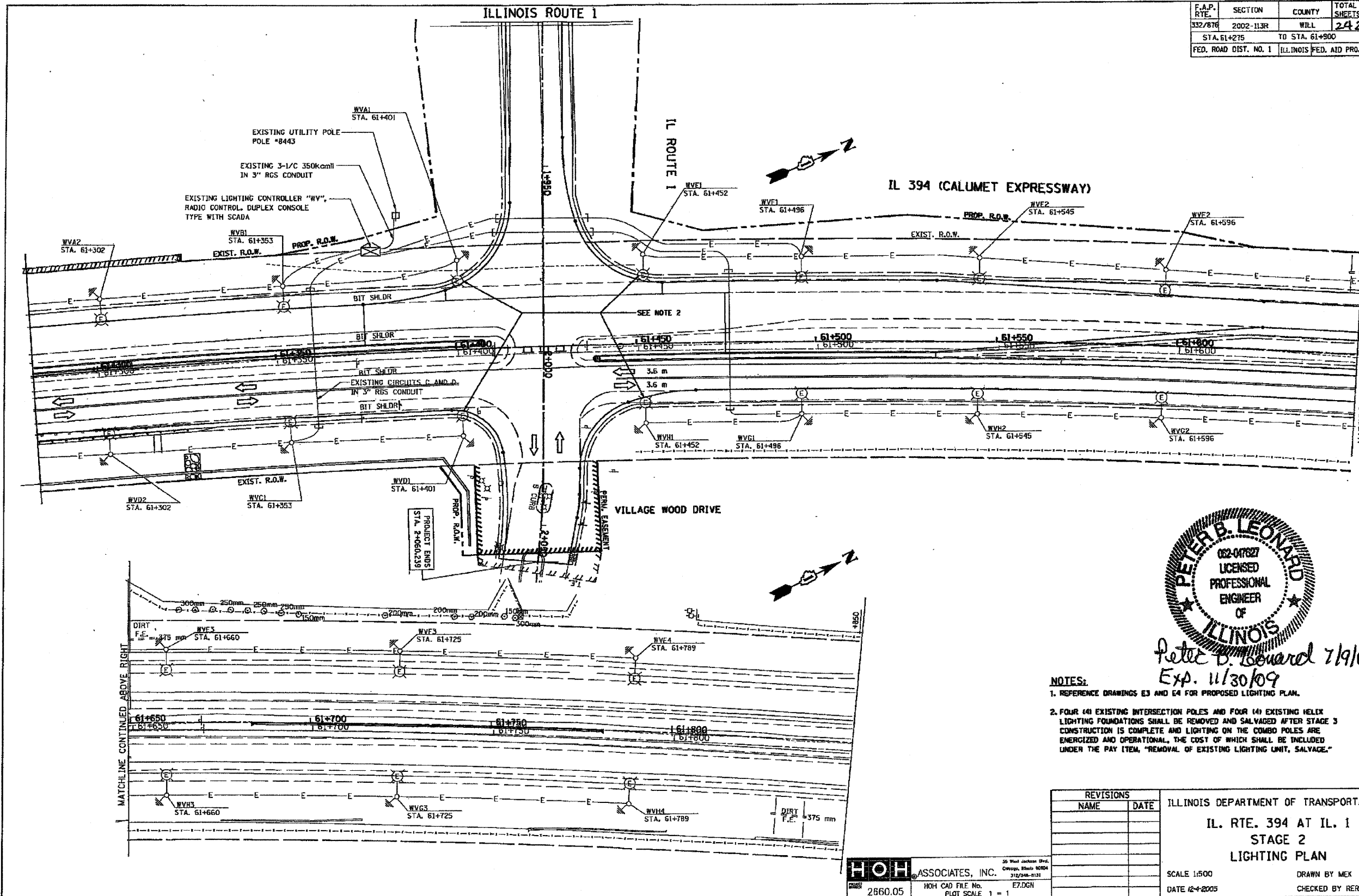


F.A.P. RTE.	SECTION	COUNTY	TOTAL SHEETS	SHEET NO.
332/876	2002-113R	WILL	242	190
STA. 61+275		TO STA. 61+900		
FED. ROAD DIST. NO. 1		ILLINOIS FED. AID PROJECT		



Peter B. Leonard 7/19/09
Exp. 11/30/09

- NOTES:
- REFERENCE DRAWINGS E3 AND E4 FOR PROPOSED LIGHTING PLAN.
 - FOUR (4) EXISTING INTERSECTION POLES AND FOUR (4) EXISTING HELIX LIGHTING FOUNDATIONS SHALL BE REMOVED AND SALVAGED AFTER STAGE 3 CONSTRUCTION IS COMPLETE AND LIGHTING ON THE COMBO POLES ARE ENERGIZED AND OPERATIONAL. THE COST OF WHICH SHALL BE INCLUDED UNDER THE PAY ITEM, "REMOVAL OF EXISTING LIGHTING UNIT, SALVAGE."

REVISIONS	
NAME	DATE

ILLINOIS DEPARTMENT OF TRANSPORTATION
IL. RTE. 394 AT IL. 1
STAGE 2
LIGHTING PLAN

SCALE 1:500
DATE 12-4-2005
DRAWN BY MEK
CHECKED BY RER

HOH ASSOCIATES, INC.
26 West Jackson Blvd.,
Chicago, Illinois 60604
312.546-0131
DATE 2660.05
HOH CAD FILE No. E7.DGN
PLOT SCALE 1 = 1