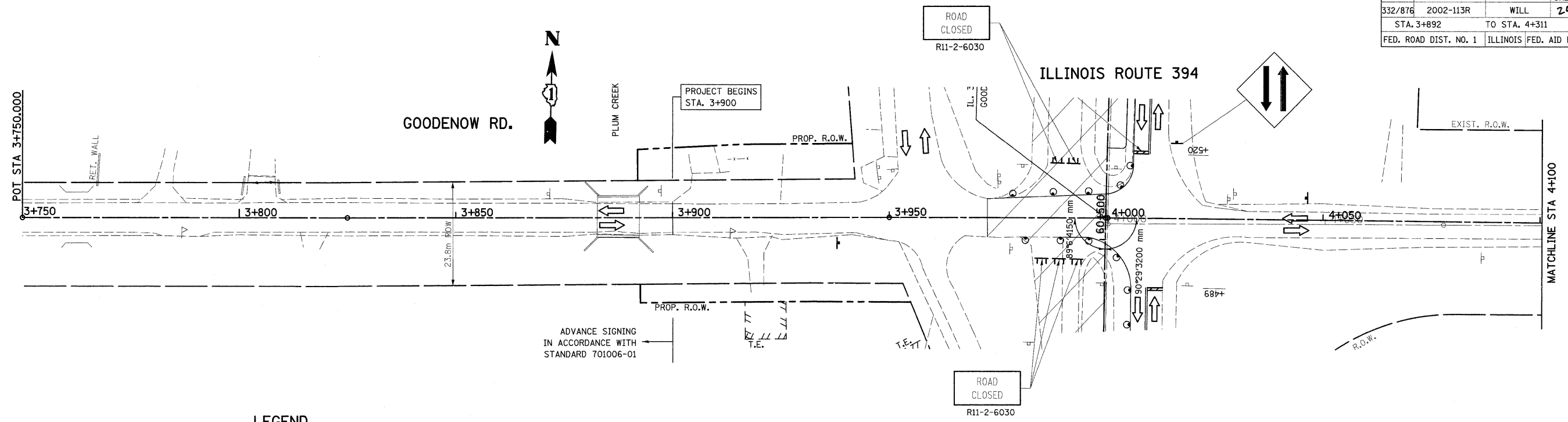
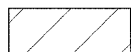
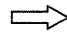

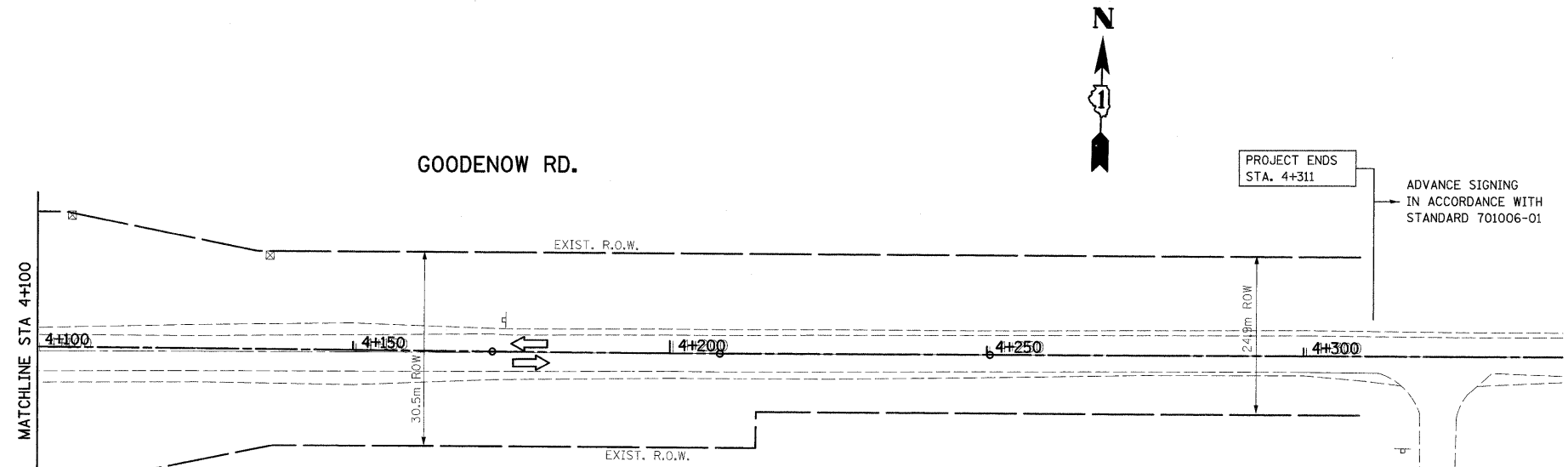


F.A.P. RTE.	SECTION	COUNTY	TOTAL SHEETS	SHEET NO.
332/876	2002-113R	WILL	242	53
STA. 3+892		TO STA. 4+311		
FED. ROAD DIST. NO. 1		ILLINOIS FED. AID PROJECT		



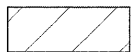
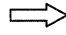
LEGEND

-  WORK ZONE
-  TRAFFIC FLOW
-  TYPE III BARRICADE WITH FLASHING LIGHTS



PROP. CURVE PG00DB-1
 PI STA = 4+189.970
 $\Delta = 0^\circ 24' 39''$ (LT)
 R = 5,000.000 m
 T = 17.925 m
 L = 35.850 m
 E = 0.032 m
 $e =$ -----
 T.R. = ----- m
 S.E. RUN. = ----- m
 P.C. STA = 4+172.044
 P.T. STA = 4+207.895

LEGEND

-  WORK ZONE
-  TRAFFIC FLOW

REVISIONS	
NAME	DATE

ILLINOIS DEPARTMENT OF TRANSPORTATION

**SUGGESTED
MAINTENANCE OF TRAFFIC
IL. RTE. 394 AT IL. 1
STAGE I**

SCALE 1:500
DATE 8/27/2009

DRAWN BY
CHECKED BY