

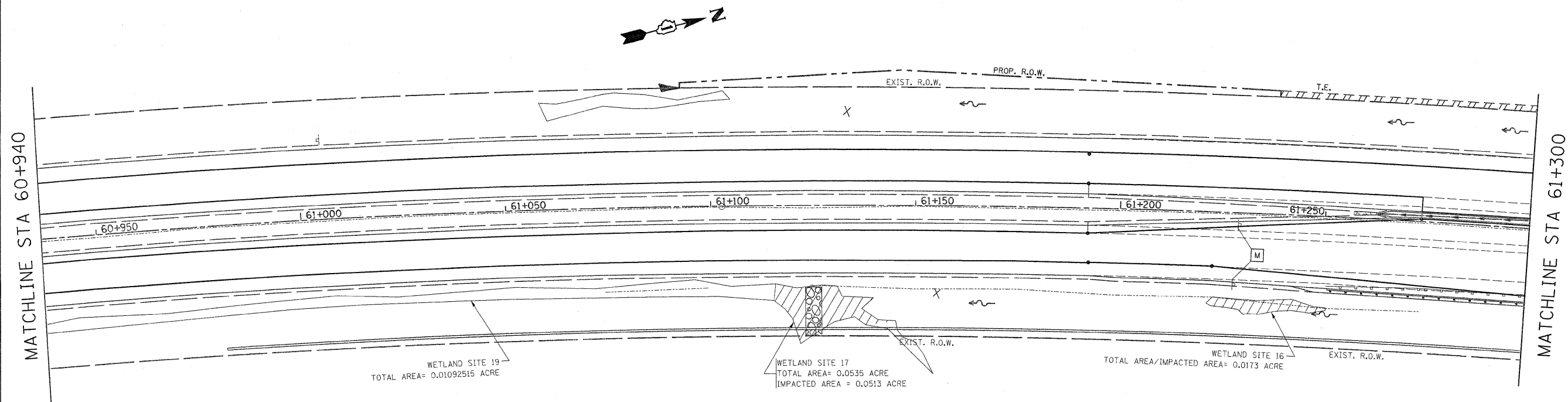
\*REF-erol  
\*REF-ero2

CONTRACT NO. 62542

F.A.P. RTE.	SECTION	COUNTY	TOTAL SHEETS	SHEET NO.
332/876	2002-113R	WILL	242	13
STA.		TO STA.		
FED. ROAD DIST. NO. 1		ILLINOIS FED. AID PROJECT		

SHEET 3 OF 6

IL 394 (CALUMET EXPRESSWAY)



WETLAND SITE 19  
TOTAL AREA= 0.01092515 ACRE

WETLAND SITE 17  
TOTAL AREA= 0.0535 ACRE  
IMPACTED AREA = 0.0513 ACRE

WETLAND SITE 16  
TOTAL AREA/IMPACTED AREA= 0.0173 ACRE

VILLAGE WOODS CHRISTIAN  
RETIREMENT CENTER

REVISIONS		ILLINOIS DEPARTMENT OF TRANSPORTATION
NAME	DATE	
		<p>IL. RTE 394 WETLAND</p> <p>SCALE 1:500 DATE 8/25/2009</p> <p>DRAWN BY CHECKED BY</p>