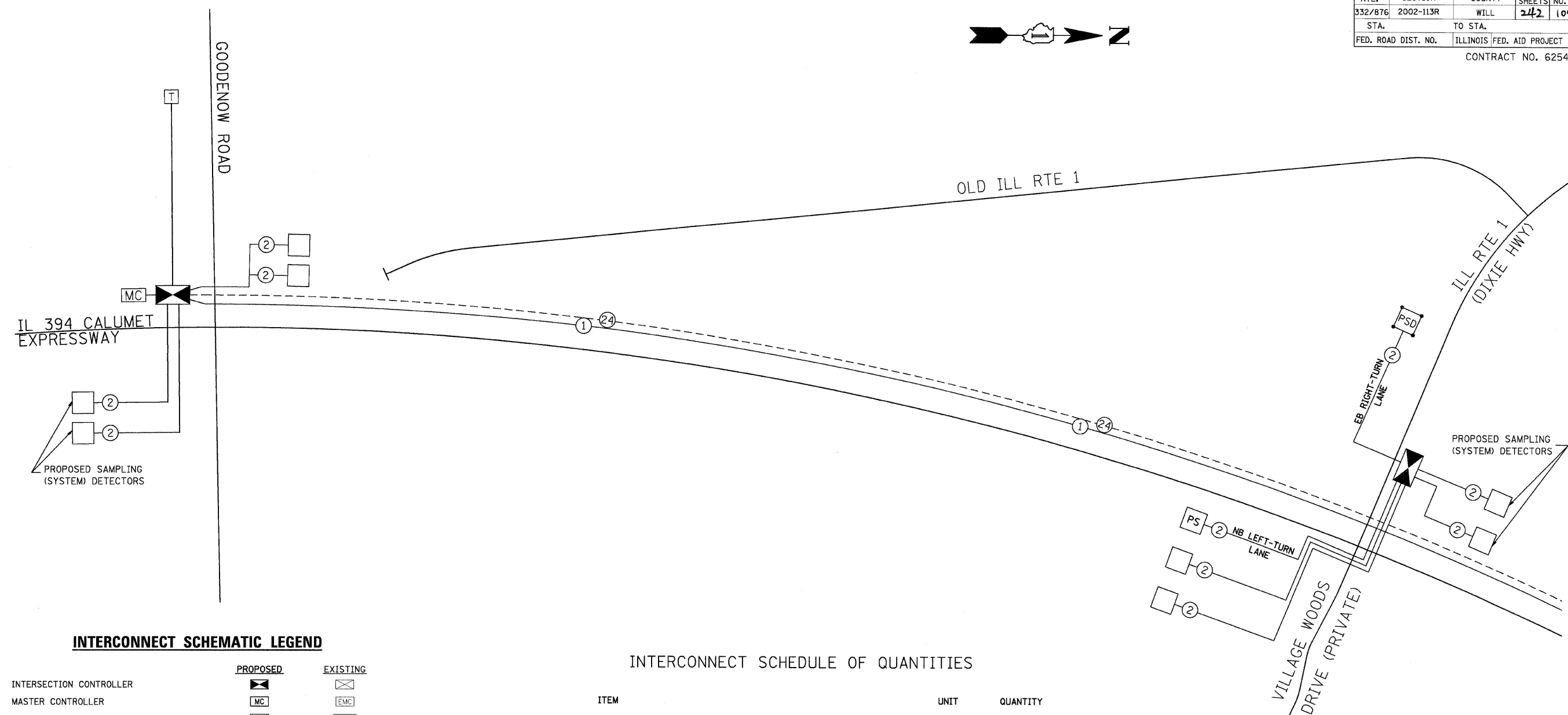
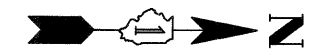


F.A.P. RTE.	SECTION	COUNTY	TOTAL SHEETS	SHEET NO.
332/876	2002-113R	WILL	242	109
STA.	TO STA.			
FED. ROAD DIST. NO.	ILLINOIS	FED. AID PROJECT		
CONTRACT NO. 62542				



INTERCONNECT SCHEMATIC LEGEND

	PROPOSED	EXISTING
INTERSECTION CONTROLLER		
MASTER CONTROLLER		
MASTER MASTER CONTROLLER		
TELEPHONE CONNECTION		
INTERSECTION & SAMPLING (SYSTEM) DETECTORS		
EXISTING INTERSECTION LOOP DETECTORS, PROPOSED SAMPLING (SYSTEM) DETECTORS		
SAMPLING (SYSTEM) DETECTORS		
EXISTING SAMPLING (SYSTEM) DETECTORS; PROPOSED INTERSECTION AND SAMPLING (SYSTEM) DETECTORS.		
EXISTING SAMPLING (SYSTEM) DETECTORS, PROPOSED SAMPLING (SYSTEM) DETECTORS		
PREFORMED INTERSECTION & SAMPLING (SYSTEM) DETECTORS		
SAMPLING (SYSTEM) PREFORMED DETECTORS		
FIBER OPTIC CABLE IN CONDUIT, NUMBER OF FIBERS AS NOTED		
INTERCONNECT CABLE - NO. 18 3 PAIR TWISTED, SHIELDED		
ELECTRIC CABLE IN CONDUIT, LEAD-IN, NO. 14, 1 PAIR		
ELECTRIC CABLE IN CONDUIT, TRACER, NO. 14 1/C, UNLESS NOTED OTHERWISE		

INTERCONNECT SCHEDULE OF QUANTITIES

ITEM	UNIT	QUANTITY
HEAVY-DUTY HANDHOLE	EACH	5
MASTER CONTROLLER	EACH	1
CONDUIT IN TRENCH, 50MM DIA., GALVANIZED STEEL	METER	788
CONDUIT PUSHED, 50MM DIA., GALVANIZED STEEL	METER	10
CONDUIT ATTACHED TO STRUCTURE, 50MM DIA., GALVANIZED STEEL	METER	45.5
TRENCH AND BACKFILL FOR ELECTRICAL WORK	METER	788
ELECTRIC CABLE IN CONDUIT, TRACER NO. 14 1C	METER	920.4
ELECTRIC CABLE IN CONDUIT, NO. 62.5/125, MM12F SM12F	METER	954.4
RE-OPTIMIZE TRAFFIC SIGNAL SYSTEM - LEVEL II (PER INTERSECTION)	EACH	2

REVISIONS		ILLINOIS DEPARTMENT OF TRANSPORTATION INTERCONNECT SCHEMATIC ILL. RTE. 394 (CALUMET EXPRESSWAY) FROM GOODENOW ROAD TO REALIGNED ILL. RTE. 1 (DIXIE HWY.)/ VILLAGE WOODS DRIVE
NAME	DATE	