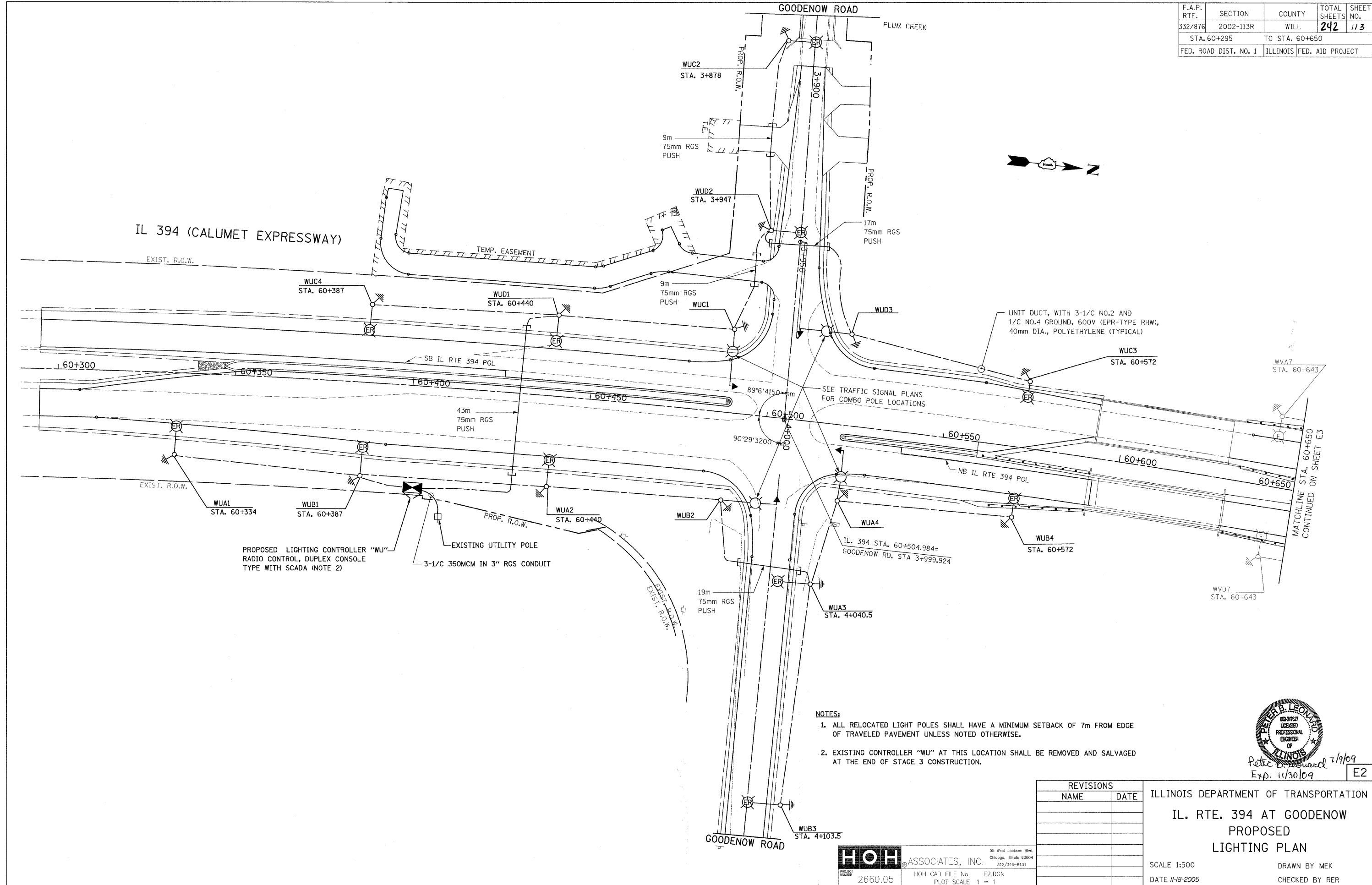


F.A.P. RTE.	SECTION	COUNTY	TOTAL SHEETS	SHEET NO.
332/876	2002-113R	WILL	242	113
STA. 60+295		TO STA. 60+650		
FED. ROAD DIST. NO. 1		ILLINOIS FED. AID PROJECT		



PROPOSED LIGHTING CONTROLLER "WU"  
RADIO CONTROL, DUPLEX CONSOLE  
TYPE WITH SCADA (NOTE 2)

EXISTING UTILITY POLE  
3-1/C 350MCM IN 3" RGS CONDUIT

UNIT DUCT, WITH 3-1/C NO.2 AND  
1/C NO.4 GROUND, 600V (EPR-TYPE RHW),  
40mm DIA., POLYETHYLENE (TYPICAL)

- NOTES:
1. ALL RELOCATED LIGHT POLES SHALL HAVE A MINIMUM SETBACK OF 7m FROM EDGE OF TRAVELED PAVEMENT UNLESS NOTED OTHERWISE.
  2. EXISTING CONTROLLER "WU" AT THIS LOCATION SHALL BE REMOVED AND SALVAGED AT THE END OF STAGE 3 CONSTRUCTION.



Peter B. Leonard 7/9/09  
Exp. 11/30/09

E2

REVISIONS	
NAME	DATE

ILLINOIS DEPARTMENT OF TRANSPORTATION  
**IL. RTE. 394 AT GOODENOW  
PROPOSED  
LIGHTING PLAN**

SCALE 1:500  
DATE 11-18-2005

DRAWN BY MEK  
CHECKED BY REE

**HOH ASSOCIATES, INC.**  
55 West Jackson Blvd.  
Chicago, Illinois 60604  
312/546-6131

PROJECT NUMBER 2660.05  
HOH CAD FILE No. E2.DGN  
PLOT SCALE 1 = 1