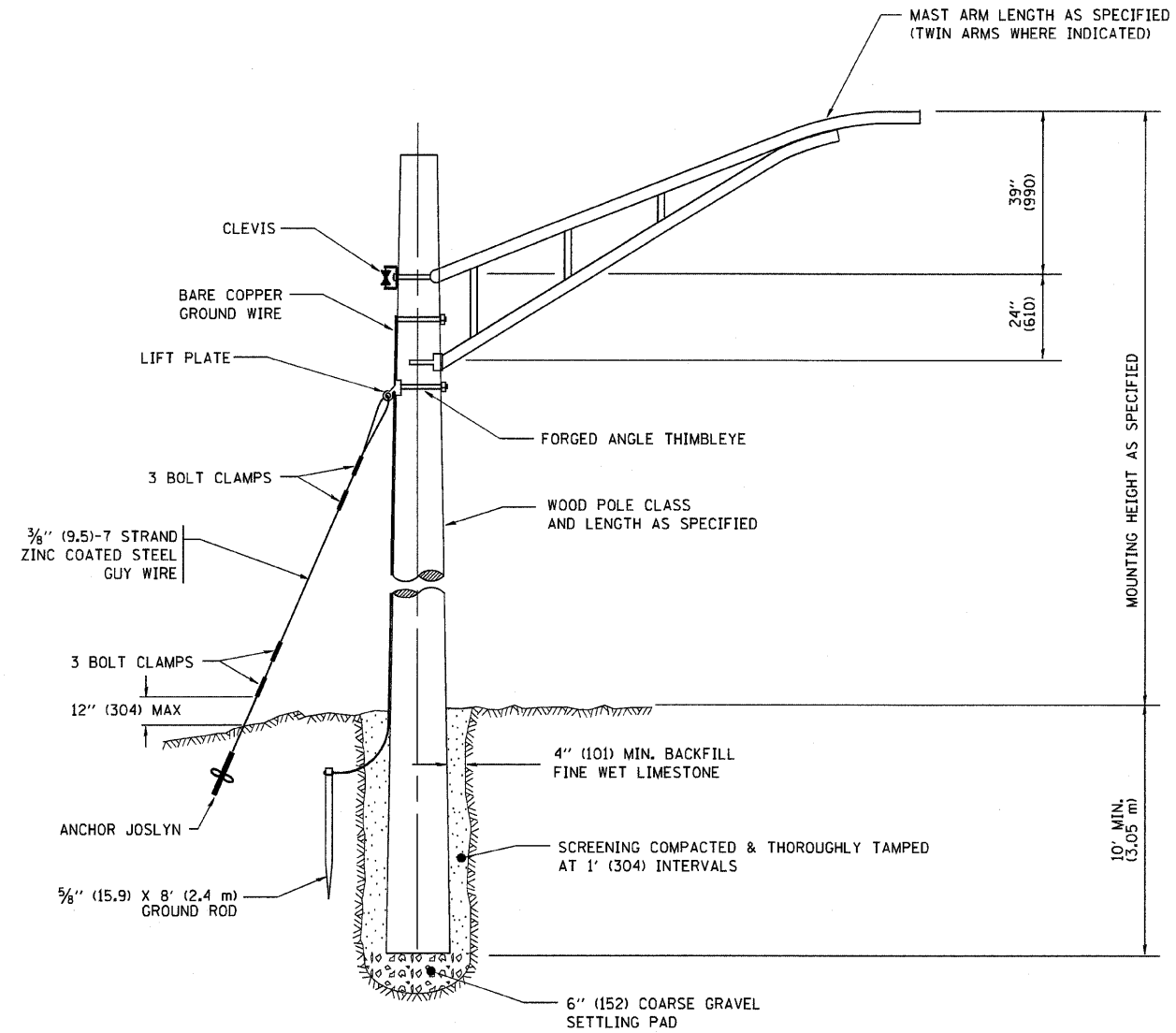
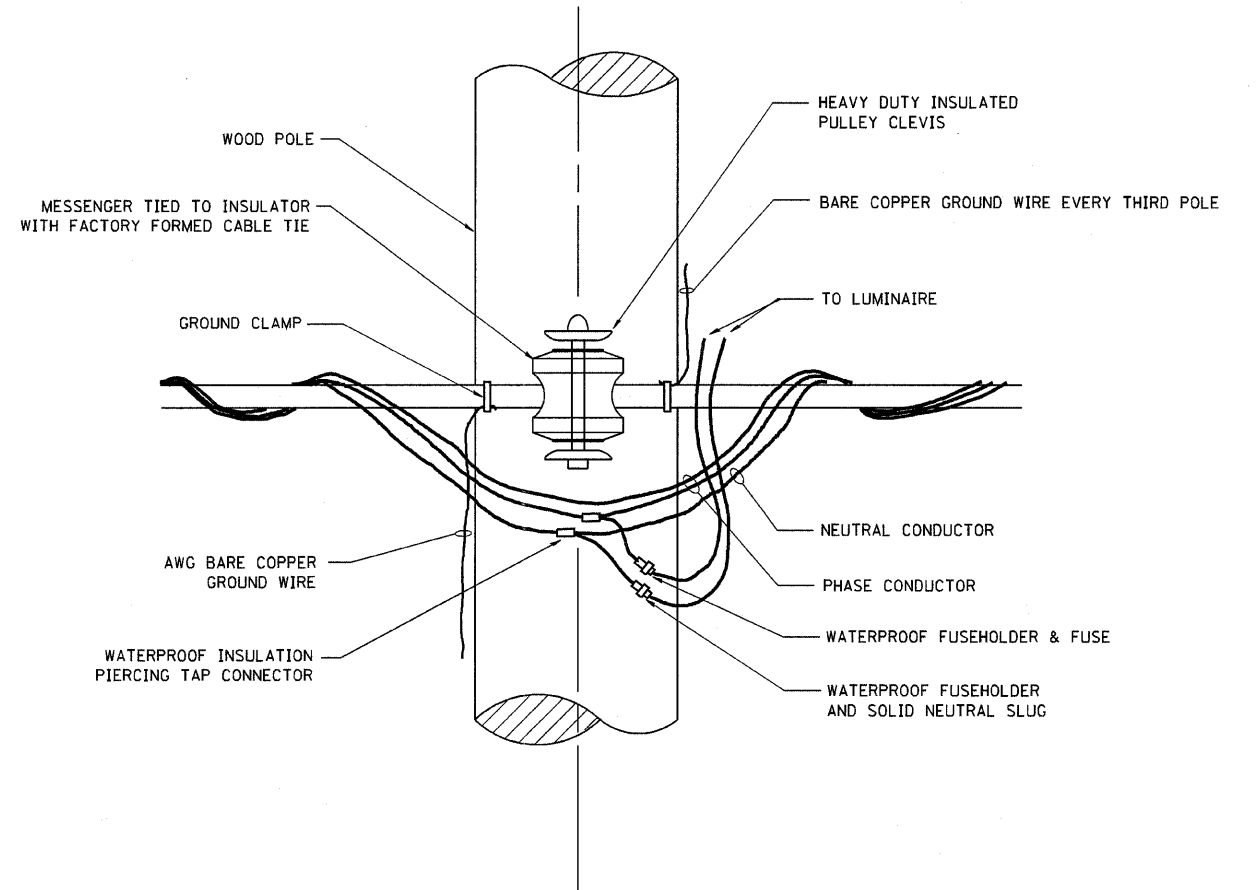


F.A. RTE.	SECTION	COUNTY	TOTAL SHEETS	SHEET NO.
332/876	2002-113R	WILL	242	134
STA.	TO STA.			
FED. ROAD DIST. NO.	ILLINOIS	FED. AID PROJECT		



TEMPORARY LIGHT POLE DETAIL



TEMPORARY LIGHT POLE ATTACHMENT DETAIL

NOTES:

1. ALL DIMENSIONS IN INCHES (MILLIMETERS) UNLESS OTHERWISE INDICATED

PLOT DATE = 4/15/2007
 FILE NAME = C:\Users\user\Documents\2002-113R.dgn
 USER NAME = bowerd

REVISIONS	
NAME	DATE
	08/08/03

ILLINOIS DEPARTMENT OF TRANSPORTATION

**TEMPORARY LIGHT POLE
DETAILS**

SCALE: VERT. NONE
HORIZ.

DRAWN BY
CHECKED BY
BE-800