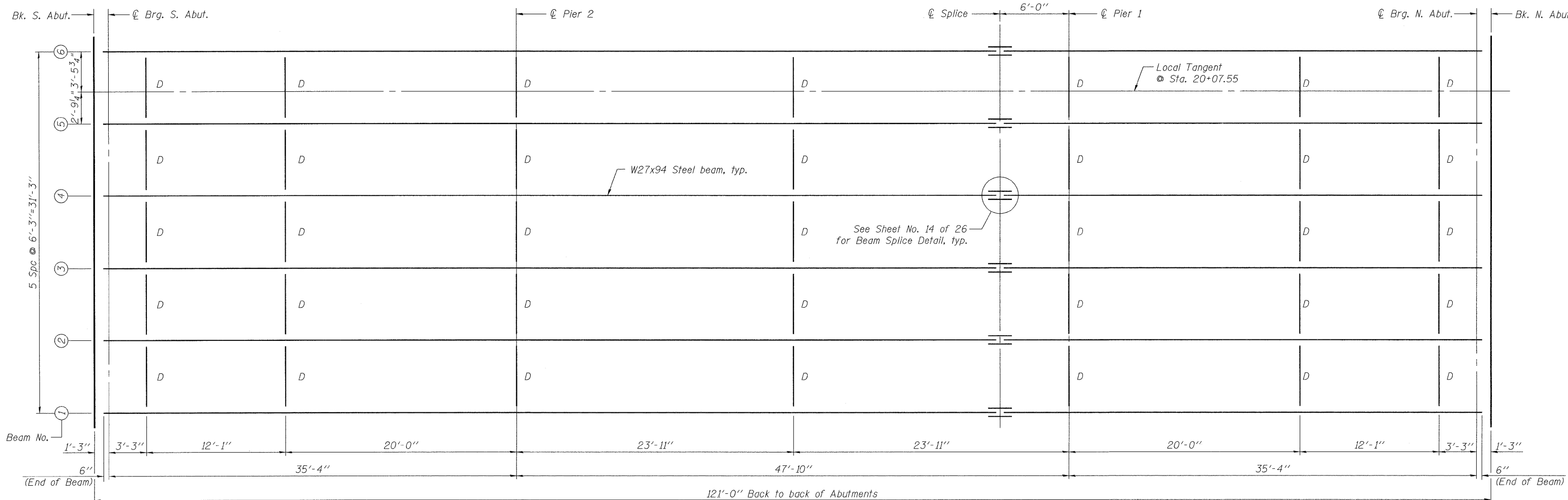
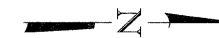
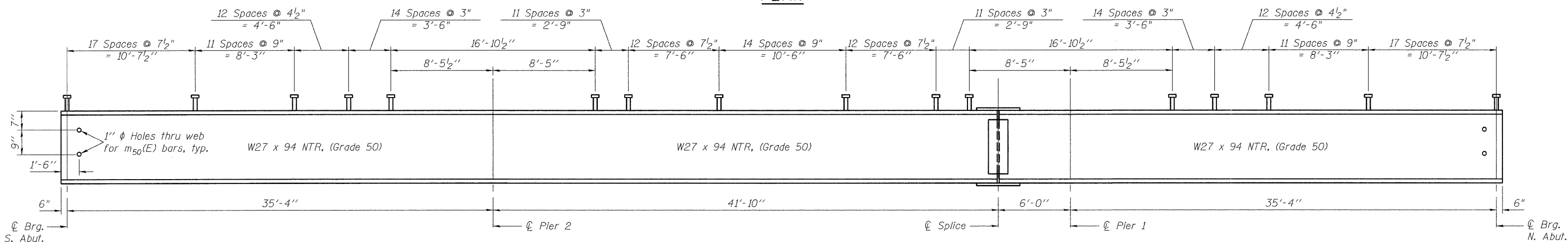


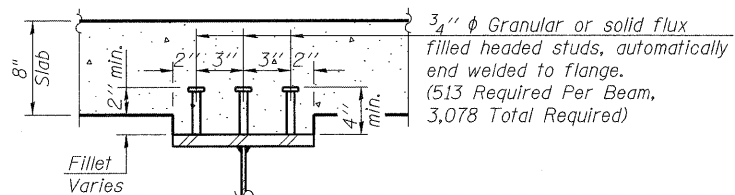
STATE OF ILLINOIS
DEPARTMENT OF TRANSPORTATION



PLAN



BEAM ELEVATION



SECTION A-A

NOTES:

- All cross frames or diaphragms shall be installed as steel is erected and secured with erection pins and bolts except as otherwise noted. Individual cross frames or diaphragms at supports may be temporarily disconnected to install bearing anchor rods.
- "D" - Denotes Interior Diaphragm. See Sheet 14 of 26 for Details
- Load carrying components designated "NTR" shall conform to the Supplemental Requirements for Notch Toughness, Zone 2.

FRAMING PLAN
NORTHBOUND ILLINOIS ROUTE 394 OVER PLUM CREEK
STATION 20+07.55

DESIGNED	SK/GMK/LCM
CHECKED	GBC/GMK/SK
DRAWN	RR/LCM/SK
CHECKED	GBC/GMK/SK

SHEET NO. 13	F.A.P. RTE.	SECTION	COUNTY	TOTAL SHEETS	SHEET NO.
	332	2002-113R	WILL	242	158
26 SHEETS	SN-099-0147		CONTRACT NO. 62542		
	FED. ROAD DIST. NO. 1 ILLINOIS FED. AID PROJECT				

