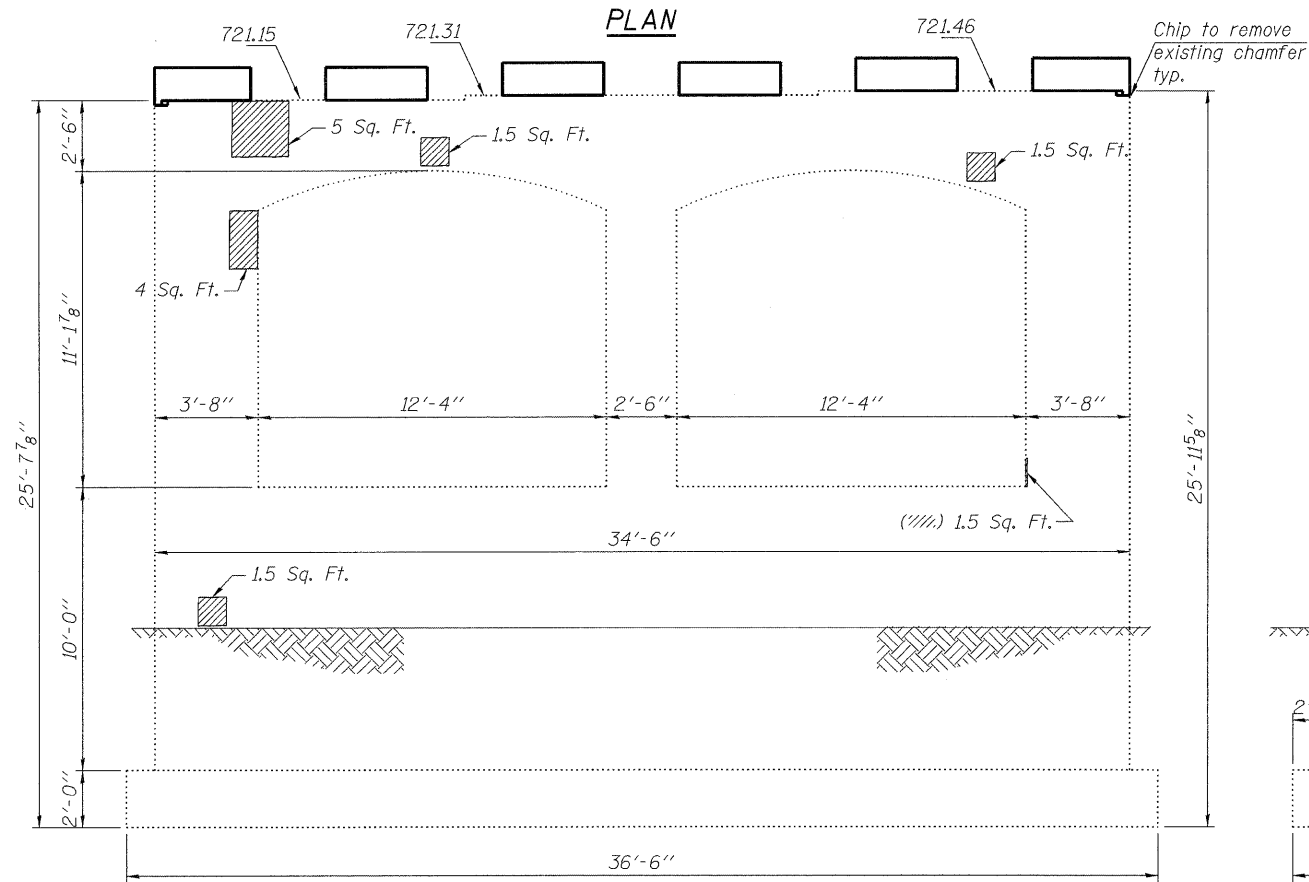
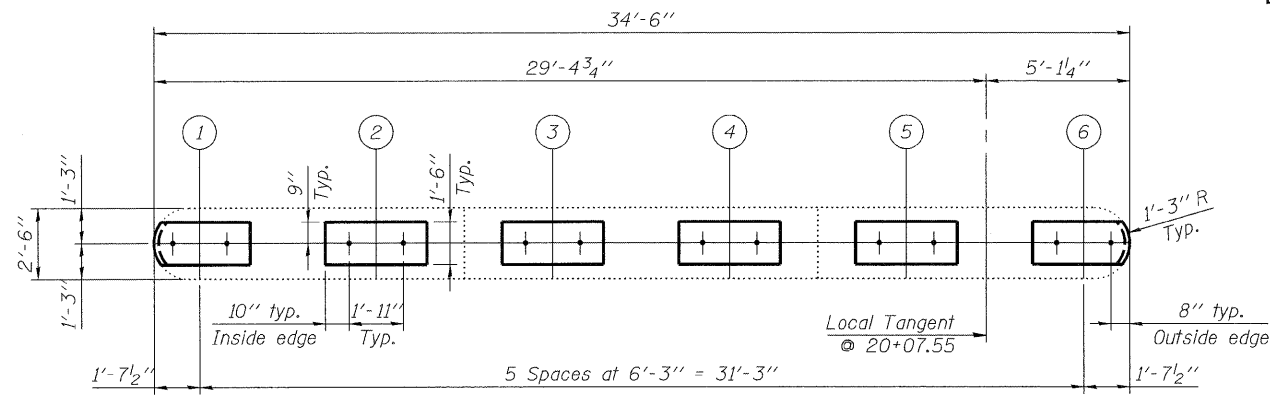


STATE OF ILLINOIS  
DEPARTMENT OF TRANSPORTATION

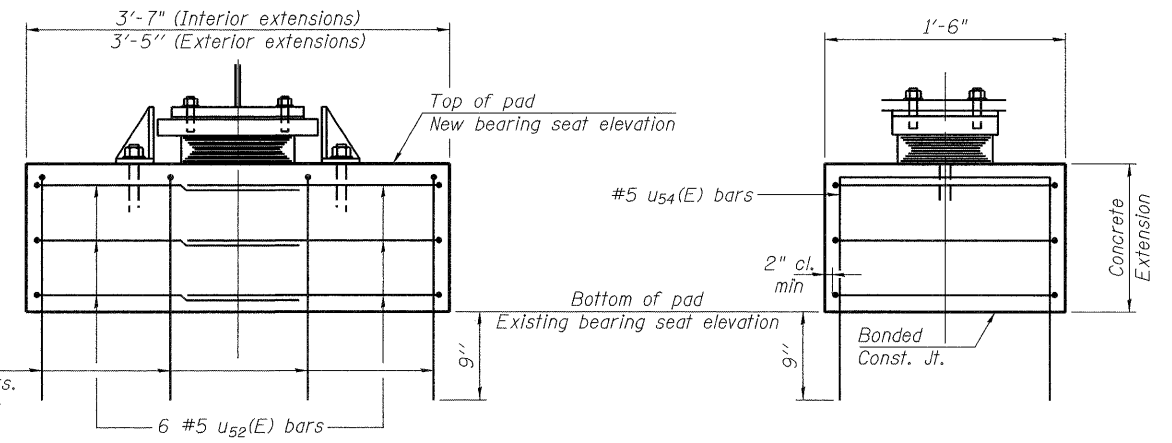


**PIER #1**

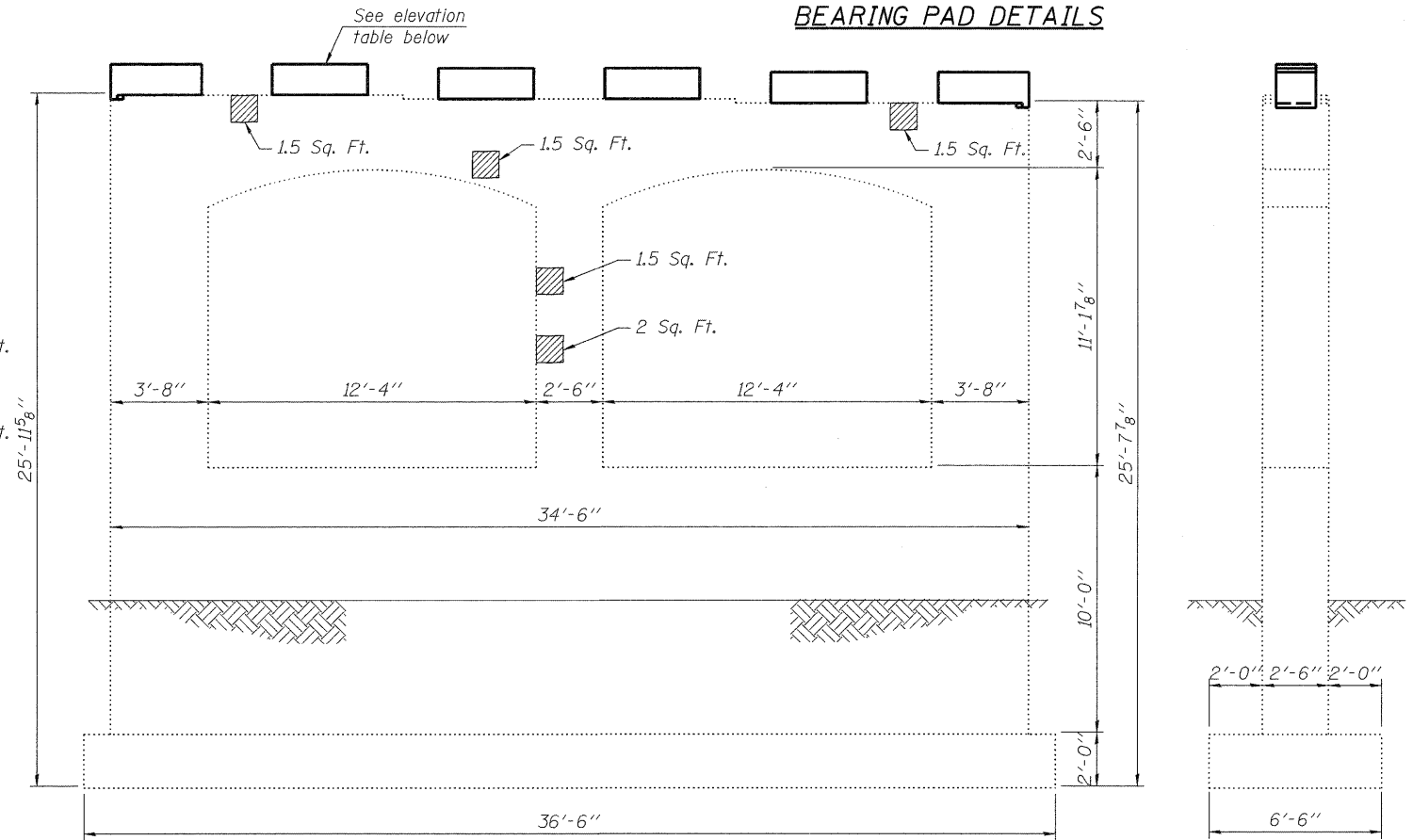
(North Elevation)

**END VIEW**

(West Elevation)



**BEARING PAD DETAILS**



**PIER #1**

(South Elevation)

**END VIEW**

(East Elevation)

Note:  
All existing dimensions are to be verified in field.

**LEGEND:**

Structural Repair of Concrete (Depth Equal to or Less than 5")

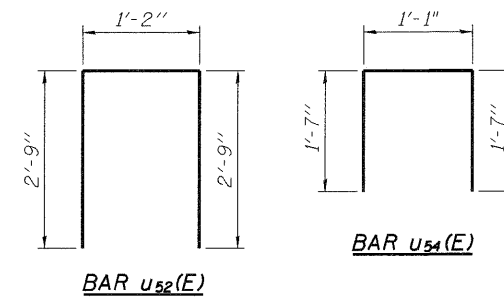
DESIGNED	SK/GMK/LCM
CHECKED	GBC/GMK/SMK
DRAWN	RR/LCM/SK
CHECKED	GBC/GMK/SMK

**CONCRETE PAD ELEVATIONS**

Location	Beam 1	Beam 2	Beam 3	Beam 4	Beam 5	Beam 6
Top Elev.	722.16	722.25	722.35	722.45	722.55	722.65

**BILL OF MATERIAL**

Bar	No.	Size	Length	Shape
U52(E)	36	#5	6'-8"	□
U54(E)	24	#5	4'-3"	□
Reinforcement Bars, Epoxy Coated			Pound	370
Concrete Structures			Cu. Yd.	1.4
Structural Repair of Concrete (Depth Equal to or Less than 5")			Sq. Ft.	26



**MINIMUM BAR LAP**  
#5 Bar = 1'-7"

**PIER 1 REPAIRS**  
**NORTHBOUND ILLINOIS ROUTE 394 OVER PLUM CREEK**  
**STATION 20+07.55**

SHEET NO. 19 26 SHEETS	F.A.P. RTE.	SECTION	COUNTY	TOTAL SHEETS	SHEET NO.
	332	2002-113R	WILL	242	164
	SN-099-0147		CONTRACT NO. 62542		
FED. ROAD DIST. NO. 1 ILLINOIS FED. AID PROJECT					

