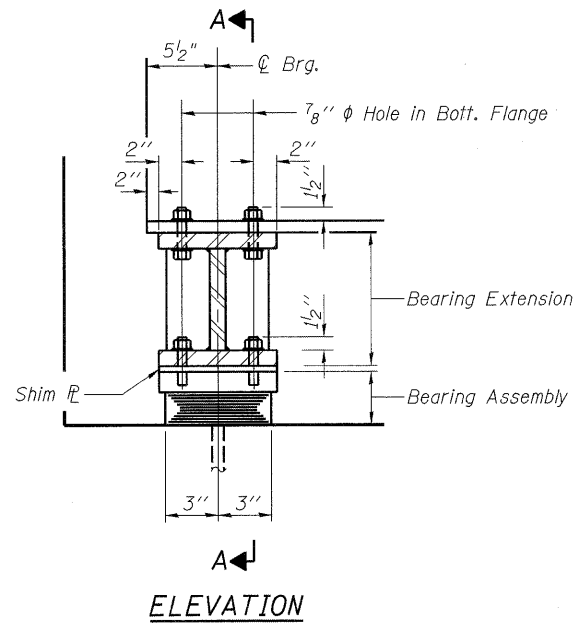
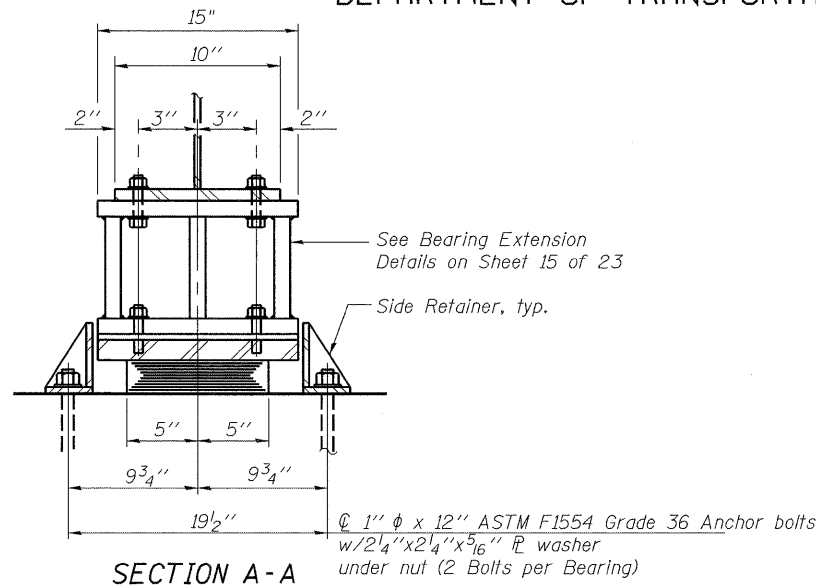


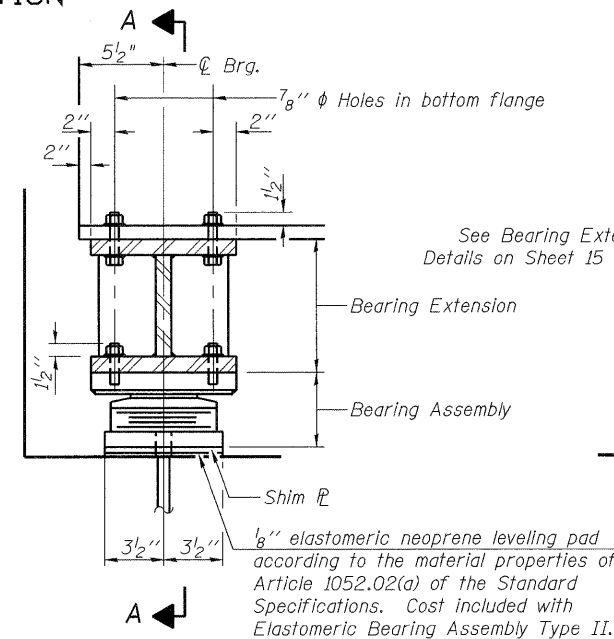
STATE OF ILLINOIS
DEPARTMENT OF TRANSPORTATION



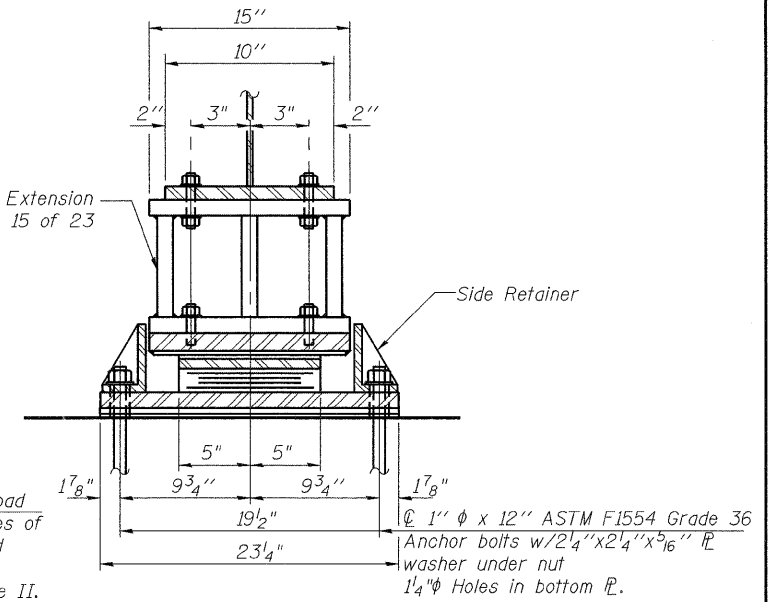
ELEVATION



SECTION A-A



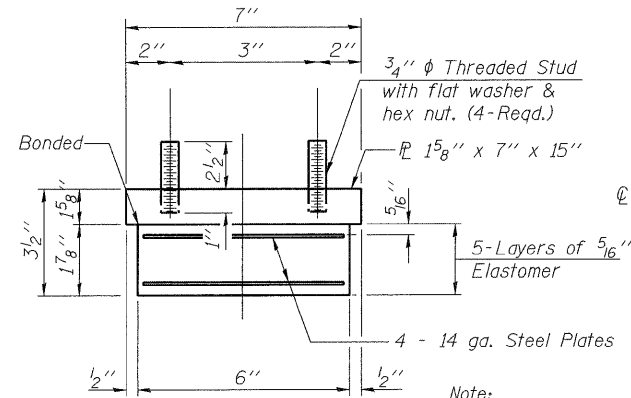
ELEVATION AT ABUT.



SECTION A-A

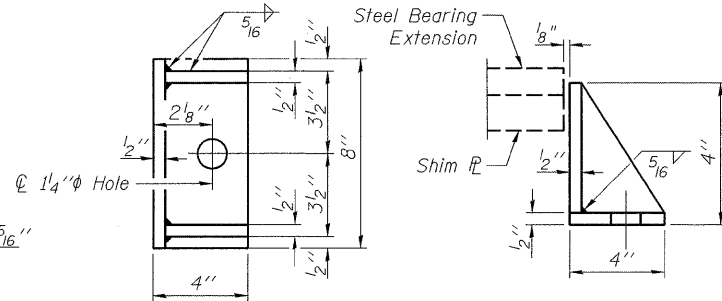
TYPE I ELASTOMERIC EXP. BRG.
(North Abutment, 7 Required)

TYPE II ELASTOMERIC EXP. BRG.
(South Abutment, 7 Required)



BEARING ASSEMBLY

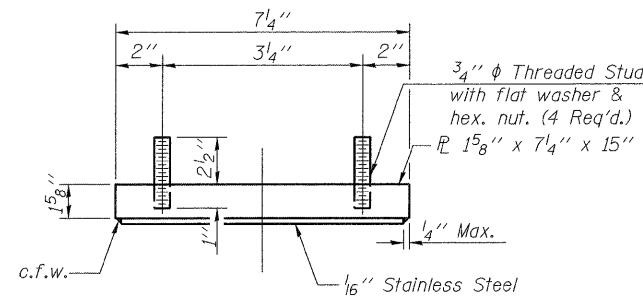
(Type I Bearings at North Abutment)



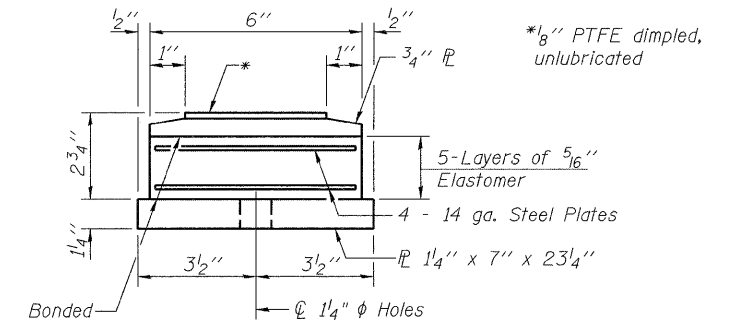
SIDE RETAINER

(Type I Bearings at North Abutment)

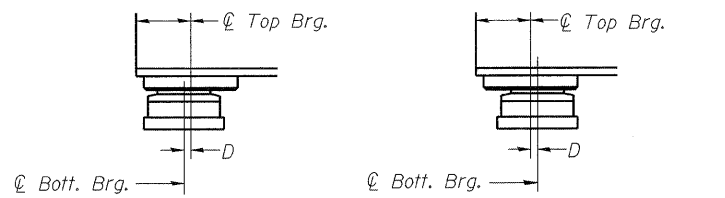
Equivalent rolled angle with stiffeners will be allowed in lieu of welded plates.



TOP BEARING ASSEMBLY



BOTTOM BEARING ASSEMBLY



BELOW 50°F.

(Move bott. brg. away from fixed brg.)

ABOVE 50°F.

(Move bott. brg. toward fixed brg.)

SETTING ANCHOR BOLTS AT EXP. BRG.

D = 1/8" per each 100' of expansion for every 15° temp. change from the normal temp. of 50°F.

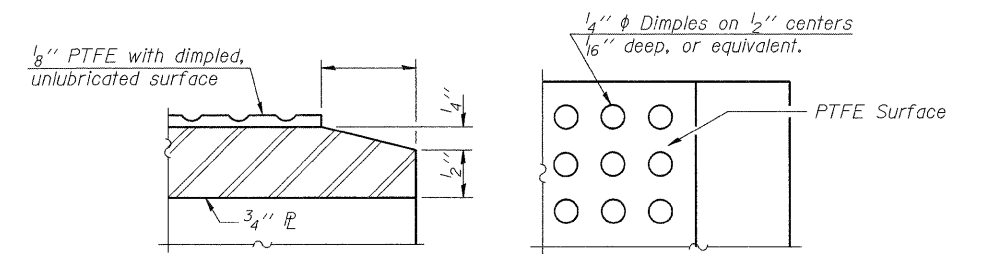
NOTES:

1. Jack and reposition bearings under existing beams B-G at Pier #1 and Pier #2. (No. of Bearings = 12)
2. Jack and remove bearings under existing beams B-G at North abutment and South abutment. (No. of Bearings = 12)
3. Two 1/8 in. adjusting shims shall be provided for each bearing in addition to all other plates or shims and placed as shown on bearing details.
4. See Sheet 15 of 23 for additional notes and Bill of Material.

SIDE RETAINER

(Type II Bearings at South Abutment)

Equivalent rolled angle with stiffeners will be allowed in lieu of welded plates.



SECTION THRU PTFE

PLAN-PTFE SURFACE

BEARING DETAILS-1

**SOUTHBOUND ILLINOIS ROUTE 394 OVER PLUM CREEK
STATION 20+07.55**

DESIGNED	SK/GMK/LCM
CHECKED	GBC/GMK/SMK
DRAWN	RR/LCM/SK
CHECKED	GBC/GMK/SMK



SHEET NO. 14	F.A.P. RTE.	SECTION	COUNTY	TOTAL SHEETS	SHEET NO.
	332	2002-113R	WILL	242	185
23 SHEETS	SN-099-0183		CONTRACT NO. 62542		
FED. ROAD DIST. NO. 1 ILLINOIS FED. AID PROJECT					