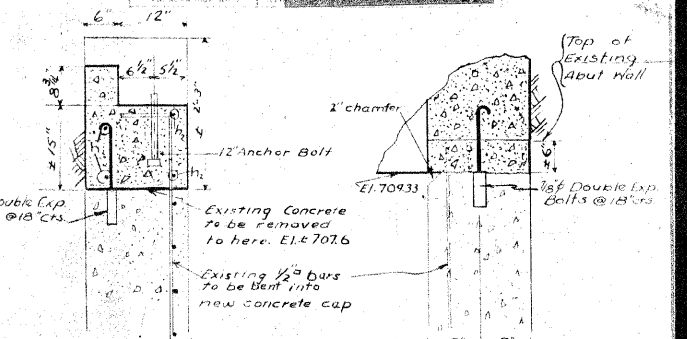
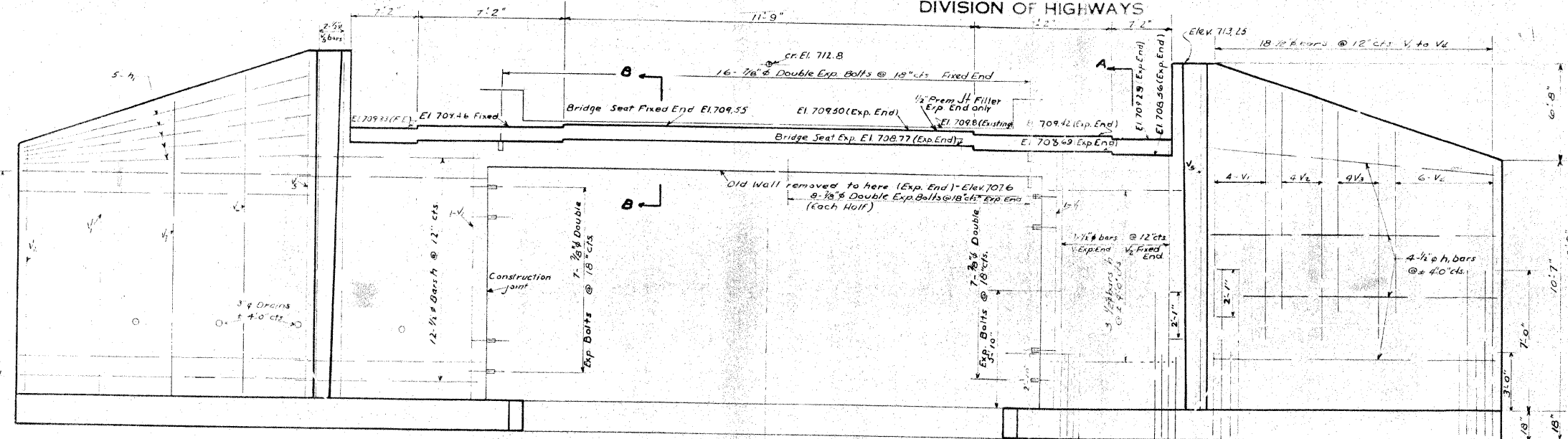


STATE OF ILLINOIS
DEPARTMENT OF PUBLIC WORKS & BUILDINGS
DIVISION OF HIGHWAYS

PROJECT F-2(20)
SHEET NO. 2
2 SHEETS



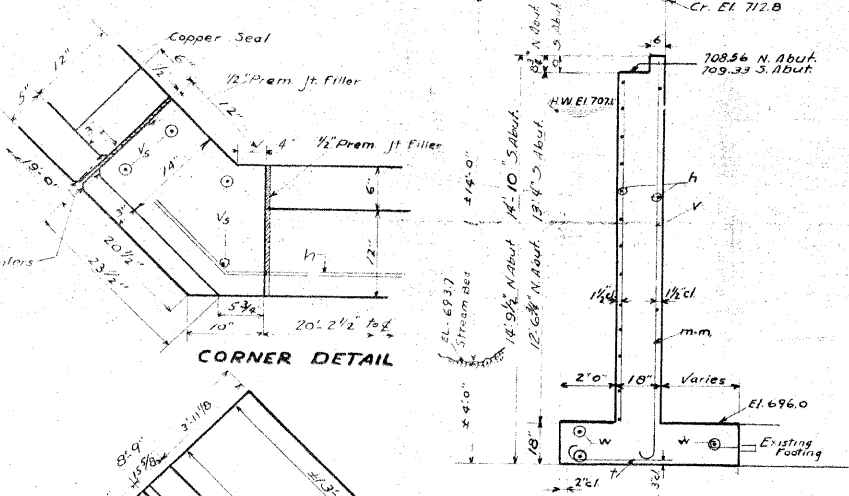
SECTION B-B
FREE END
N. ABUT.
SECTION B-B
FIXED END
S. ABUT.

GENERAL NOTES

Old Abutments shall be removed to elevation shown on plans. Old reinforcing steel shall be thoroughly cleaned and bent into the new work. This work shall be included in contract lump sum price for Removal of Existing Superstructure. Est. 4.1 cu. yds. for two abutments.

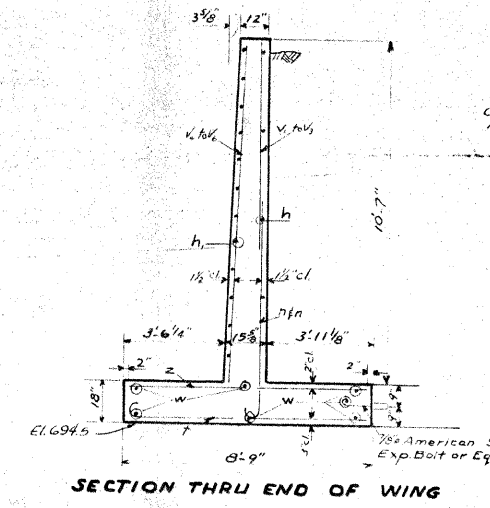
NOTE:
Foundation Material - Blue Clay.
No piles used under existing abutts.

REINFORCEMENT IN FRONT FACE



CORNER DETAIL

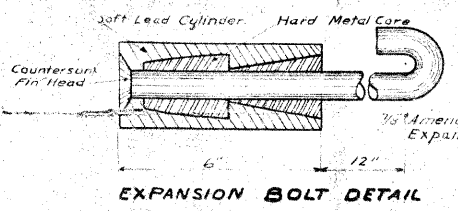
ABUTTS-IDENTICAL EXCEPT AS NOTED



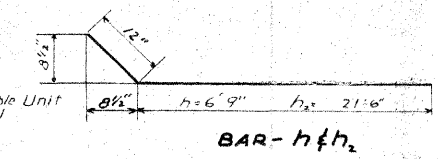
SECTION A-A

SECTION THRU END OF WING

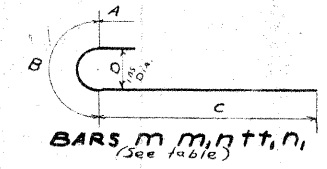
REINFORCEMENT IN BACK FACE



EXPANSION BOLT DETAIL



BAR-hfh2

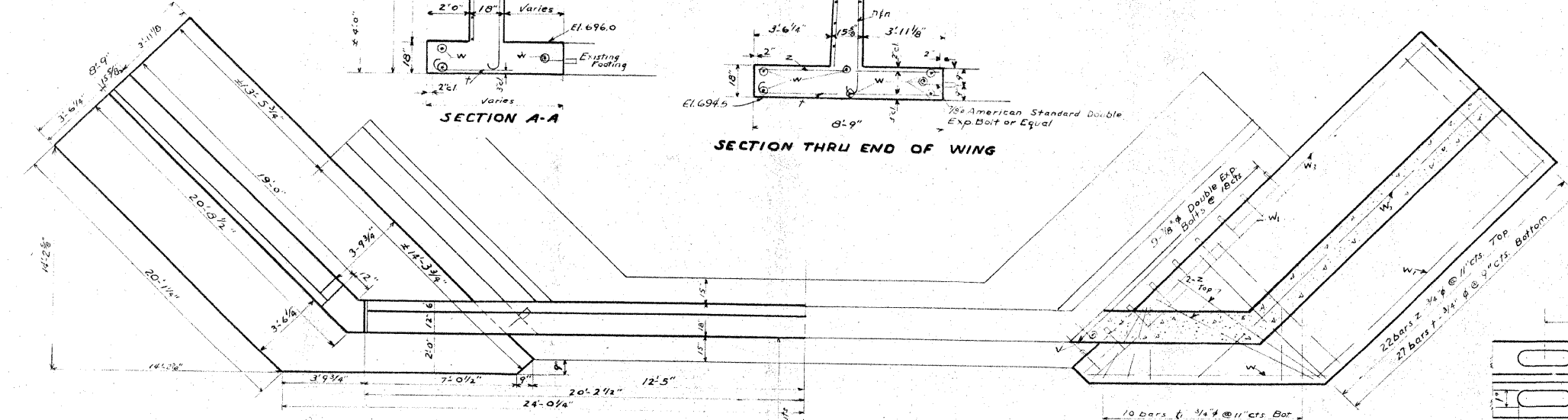


BARS m, m1, n, n1
(See table)

Bar	A	B	C	D
m	5"	9"	6'-10"	5"
m1	5"	9"	3'-10"	5"
n	7 3/4"	11"	3'-11 1/4"	6"
n1	7 3/4"	11"	7'-11 1/4"	6"
t	6"	11"	7'-1"	6"
t1	6"	11"	3'-1"	6"

BILL OF MATERIAL
(Two Abutments)

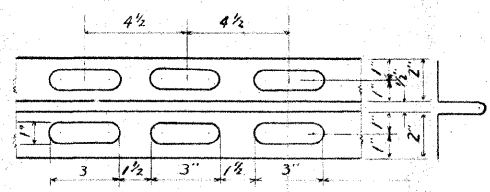
Bar	No	Size	Length	Shape
V	14	1/2" #	8'-9"	
V1	20	1/2" #	11'-6"	
V2	34	1/2" #	10'-0"	
V3	16	1/2" #	8'-6"	
V4	24	1/2" #	7'-0"	
V5	-	1/2" #	16'-6"	
V6	4	1/2" #	15'-0"	
V7	4	1/2" #	13'-6"	
h	60	1/2" #	7'-9"	
h1	80	1/2" #	18'-6"	
h2	8	1/2" #	22'-6"	
m	36	3/8" #	6'-0"	
m1	36	3/8" #	5'-0"	
n	88	3/8" #	5'-6"	
n1	92	3/8" #	9'-6"	
t	108	3/8" #	8'-6"	
t1	40	3/8" #	4'-6"	
Z	96	3/4" #	8'-3"	
W	8	1/2" #	11'-0"	
W1	12	1/2" #	19'-0"	
W2	8	1/2" #	23'-0"	
W3	8	1/2" #	27'-0"	
Class X Concrete	cu. yds.	-	124.0	
Reinforcement Bars	Lbs.	-	8050	
Expansion Bolts	Ea.	-	96	



HALF PLAN SHOWING DIMENSIONS

HALF FOOTING PLAN SHOWING REINFORCEMENT

PLAN



DETAIL OF COPPER SEAL

Copper Seal shall be 16oz. Cold Rolled Annealed Copper with perforated flanges. Splices if necessary shall be soldered or brazed. Cost shall be included in contract unit price for Class X Concrete.

COMPUTED: S. S. Rawson
CHECKED: George M. ...
DRAWN: ...
CHECKED: ...
APPROVED: W. W. ...
BRIDGE ENGINEER
CHIEF HIGHWAY ENGINEER

PROJECT F-2(20)
WILL COUNTY
STA. 3+53