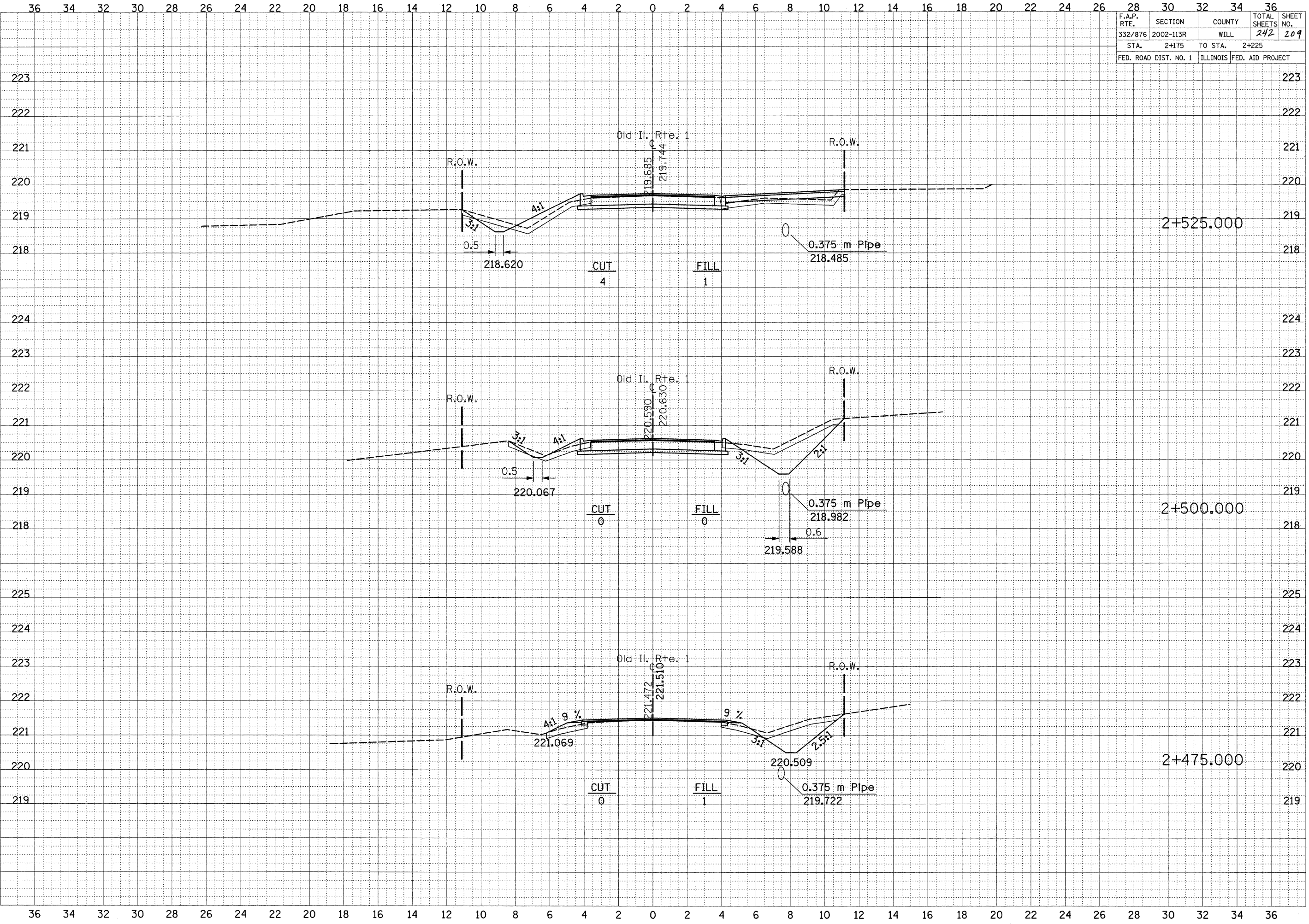


F.A.P. RTE.	SECTION	COUNTY	TOTAL SHEETS	SHEET NO.
332/876	2002-113R	WILL	242	209
STA. 2+175		TO STA. 2+225		
FED. ROAD DIST. NO. 1		ILLINOIS FED. AID PROJECT		



8/24/2009  
 c:\pw\work\p\w\id07\ULRICH\KD\d010364\vs\_01d111\_2.dgn  
 ulrchkd