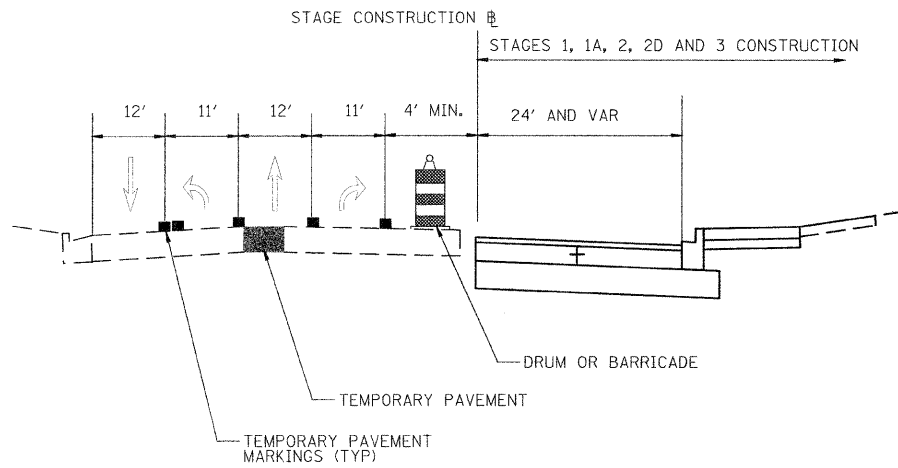
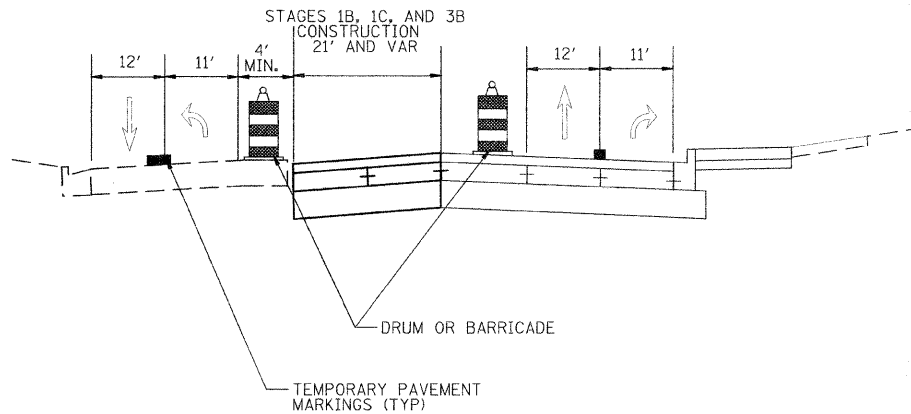


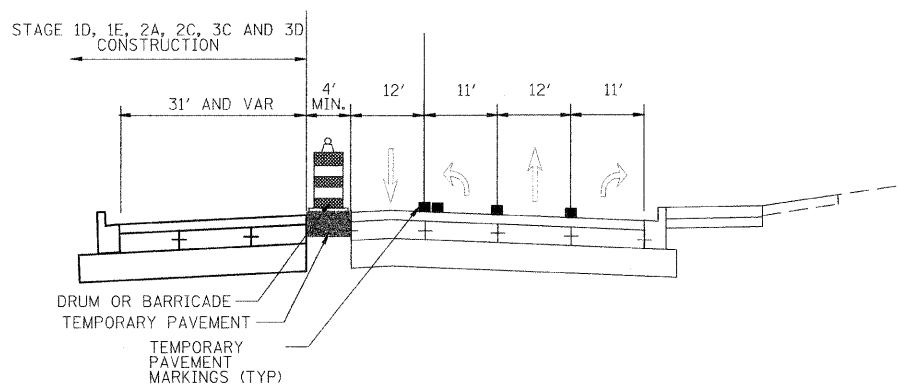
F.A.P. RTE.	SECTION	COUNTY	TOTAL SHEETS	SHEET NO.
350	00-00242-00-CH	COOK	129	19
STA.		TO STA.		
FED. ROAD DIST. NO. 7 ILLINOIS FED. AID PROJECT				



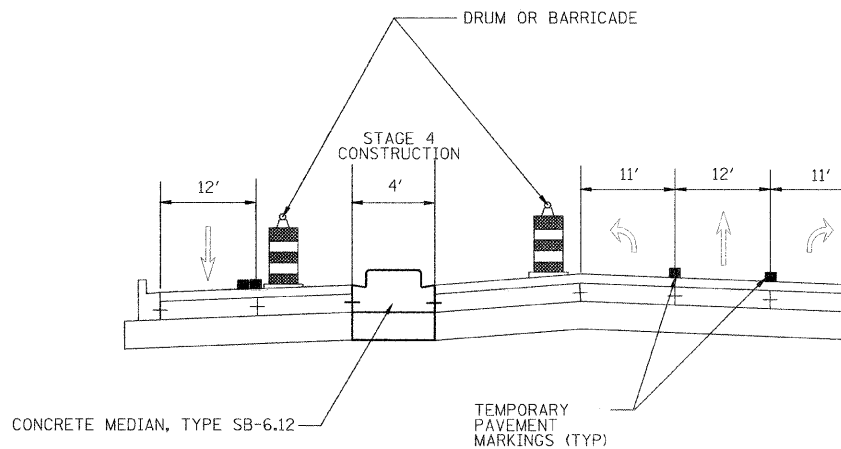
GOLF ROAD STAGES 1, 1A, 2, 2D, 3 TYPICAL SECTION



GOLF ROAD STAGES 1B, 1C, 3B TYPICAL SECTION



GOLF ROAD STAGES 1D, 1E, 3C, 3D TYPICAL SECTION



GOLF ROAD STAGE 4 TYPICAL SECTION

GENERAL NOTES

1. THE CONTRACTOR SHALL MAINTAIN TRAFFIC IN ACCORDANCE WITH THE PLANS, SPECIAL PROVISIONS, STATE STANDARDS, STANDARD SPECIFICATIONS AND AS DIRECTED BY THE ENGINEER.
2. THE ENGINEER SHALL BE INFORMED 48 HOURS IN ADVANCE OF ANY CHANGE IN CONSTRUCTION STAGING.
3. TYPE II BARRICADES SHALL BE EQUIPPED WITH MONODIRECTIONAL STEADY BURN LIGHTS. WHEN SEPARATING OPPOSING LANES OF TRAFFIC, DELINEATORS AND BARRICADES SHALL BE PLACED AT 25' INTERVALS AND AT 12.5' INTERVALS WITHIN TAPER AND CURVE SECTIONS AS INDICATED ON THE PLANS OR AS DIRECTED BY THE ENGINEER. WHEN SEPARATING TRAFFIC FROM CONSTRUCTION, THIS SPACING MAY BE DOUBLED. BARRICADES, 2' IN WIDTH SHALL BE UTILIZED DURING ALL STAGES OF TRAFFIC CONTROL. DIRECTION INDICATOR BARRICADES SHALL BE USED AT ALL TAPERS, SHIFTS AND LANE DROPS.
4. THE CONTRACTOR SHALL BE REQUIRED TO REMOVE ALL EXISTING PAVEMENT MARKINGS WHICH CONFLICT WITH THE DESIGNATED TRAFFIC CONTROL PLAN. THIS WORK SHALL BE PAID FOR AS PAVEMENT MARKING REMOVAL OR WORK ZONE PAVEMENT MARKING REMOVAL.
5. ALL TEMPORARY PAVEMENT MARKINGS SHOWING DETERIORATION AFTER 7 DAYS SHALL BE REPLACED BY THE CONTRACTOR AS DIRECTED BY THE ENGINEER. SUFFICIENT QUANTITIES FOR PLACEMENT AND TWO REPLACEMENTS HAVE BEEN PROVIDED.
6. THE FURNISHING, INSTALLING, AND RELOCATION OF ALL TRAFFIC SIGNS SHALL BE IN ACCORDANCE WITH THE MANUAL ON UNIFORM TRAFFIC CONTROL DEVICES AND THE STANDARD SPECIFICATIONS. THIS WORK SHALL BE INCLUDED IN THE COST FOR TRAFFIC CONTROL AND PROTECTION (SPECIAL). ALL CONFLICTING TRAFFIC SIGNS SHALL BE COVERED AS DIRECTED BY THE ENGINEER. THIS SHALL BE INCLUDED IN THE COST OF TRAFFIC CONTROL AND PROTECTION.
7. THE CONTRACTOR SHALL BE RESPONSIBLE FOR ENSURING DRAINAGE OF THE ROADWAY DURING ALL STAGES OF CONSTRUCTION. THE COST OF MAINTAINING DRAINAGE FLOWS SHALL BE INCIDENTAL TO TRAFFIC CONTROL AND PROTECTION (SPECIAL).
8. THE CONTRACTOR SHALL BE RESPONSIBLE FOR PUMPING OUT WATER FROM THE PROPOSED 78" STORM SEWER UNTIL IT IS CONNECTED TO THE 48" COMBINATION SEWER IN STAGE 2B. THIS WORK SHALL BE INCLUDED IN THE COST OF THE PROPOSED 78" STORM SEWER.
9. THE PERMANENT TRAFFIC CONTROL DEPICTED HEREIN IS THE MINIMUM REQUIREMENT. ADDITIONAL TRAFFIC CONTROL DEVICES AS SPECIFIED BY THE SPECIAL PROVISIONS SHALL BE PLACED BY THE CONTRACTOR TO THE SATISFACTION OF THE ENGINEER. ALL TRAFFIC CONTROL DEVICES SHALL BE CONSIDERED INCLUDED IN THE COST OF THE LUMP SUM PAY ITEM "TRAFFIC CONTROL AND PROTECTION (SPECIAL)" UNLESS OTHERWISE INDICATED IN THE PLANS OR SPECIAL PROVISIONS.
10. ALL TRAFFIC CONTROL WARNING SIGNS AND ASSOCIATED SIGNING MOUNTED WITH THE WARNING SIGNS SHALL HAVE BLACK LEGENDS AND BORDERS ON FLOURESCENT ORANGE REFLECTIVE SHEETING.
11. ALL CONSTRUCTION SIGNS, BARRICADES, AND OTHER DEVICES REQUIRED TO CONTROL TRAFFIC SHALL BE FURNISHED, INSTALLED, AND MAINTAINED BY THE CONTRACTOR.
12. ALL TRAFFIC CONTROL DEVICES SHALL BE REMOVED, COVERED OR TURNED AWAY FROM THE TRAFFIC IMMEDIATELY WHEN THEY ARE NO LONGER NECESSARY. WHEN A SIGN IS COVERED, ITS POST SHALL HAVE A REFLECTIVE 3 INCH X 6 INCH DELINEATOR INSTALLED.
13. TEMPORARY LANE CLOSURES FOR ANY REASON SHALL BE RESTRICTED TO THE WEEKDAY HOURS OF 9:00 AM TO 3:00 PM OR WEEKENDS IF APPROVED BY THE ENGINEER 48 HOURS IN ADVANCE.
14. CONSTRUCT STAGE 1A AT FOSTER/SKOKIE, STAGE 2B, STAGE 2C, STAGE 2D, AND STAGE 2G WITH HIGH-EARLY STRENGTH PORTLAND CEMENT CONCRETE BASE COURSE, 9".

PLT DATE = 11/13/2008  
 FILE = 11111111  
 PLOT SCALE = 8:24:00  
 USER NAME = RUSER

REVISIONS	
NAME	DATE

ILLINOIS DEPARTMENT OF TRANSPORTATION  
 SKOKIE BOULEVARD (U.S. ROUTE 41)

SUGGESTED TRAFFIC CONTROL PLANS  
 TYPICAL SECTIONS

DATE 11-14-08  
 DRAWN BY SAC  
 CHECKED BY DWB

NOT TO SCALE