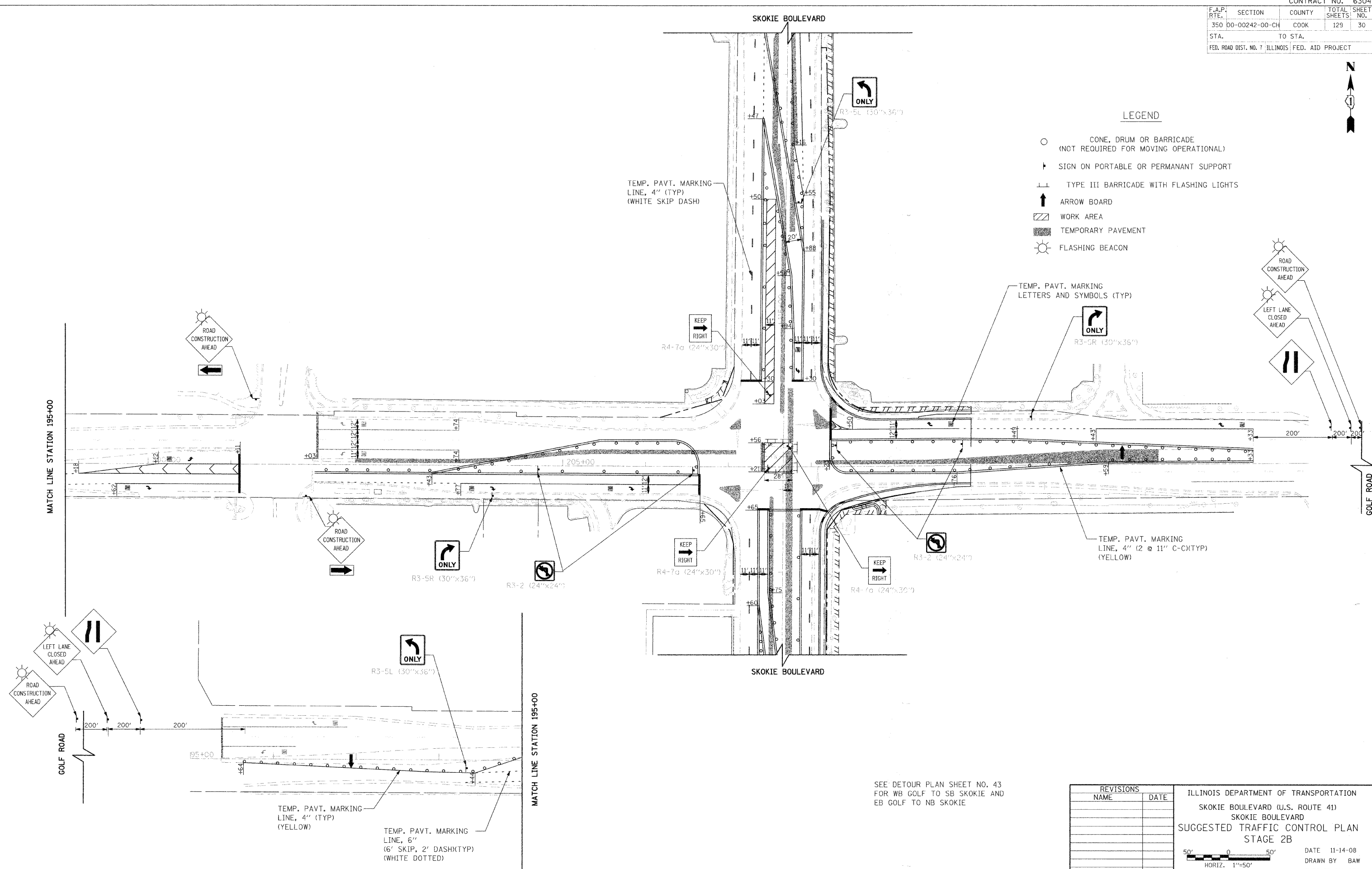


F.A.P. RTE.	SECTION	COUNTY	TOTAL SHEETS	SHEET NO.
350	00-00242-00-CH	COOK	129	30
STA.	TO STA.			
FED. ROAD DIST. NO. 7 ILLINOIS FED. AID PROJECT				



LEGEND

- CONE, DRUM OR BARRICADE (NOT REQUIRED FOR MOVING OPERATIONAL)
- ↑ SIGN ON PORTABLE OR PERMANENT SUPPORT
- ⊥ TYPE III BARRICADE WITH FLASHING LIGHTS
- ↑ ARROW BOARD
- ▨ WORK AREA
- ▨ TEMPORARY PAVEMENT
- ☀ FLASHING BEACON



TEMP. PAVT. MARKING LETTERS AND SYMBOLS (TYP)



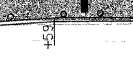
R3-5R (30"x36")



R3-5L (30"x36")



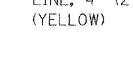
R3-2 (24"x24")



R4-7a (24"x30")



R4-7c (24"x30")



R3-5R (30"x36")



R3-5L (30"x36")



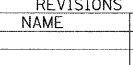
R3-5R (30"x36")



R3-5L (30"x36")



R3-5R (30"x36")



R3-5L (30"x36")



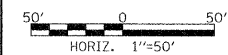
R3-5R (30"x36")

SEE DETOUR PLAN SHEET NO. 43 FOR WB GOLF TO SB SKOKIE AND EB GOLF TO NB SKOKIE

REVISIONS	
NAME	DATE

ILLINOIS DEPARTMENT OF TRANSPORTATION
 SKOKIE BOULEVARD (U.S. ROUTE 41)
 SKOKIE BOULEVARD
 SUGGESTED TRAFFIC CONTROL PLAN
 STAGE 2B

DATE 11-14-08
 DRAWN BY BAW
 CHECKED BY CEC



PLOT DATE = 11/13/2008
 PLOT TIME = 10:51:11
 PLOT SCALE = 1/8"=1'-0"
 USER NAME = BUSER