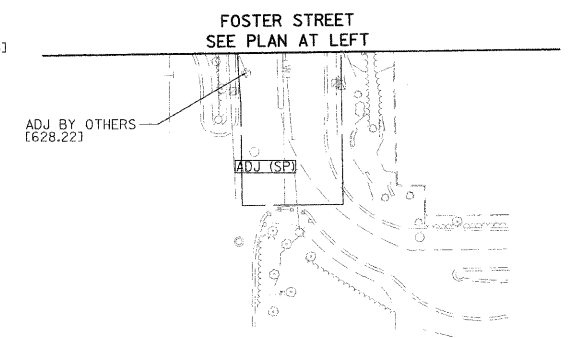
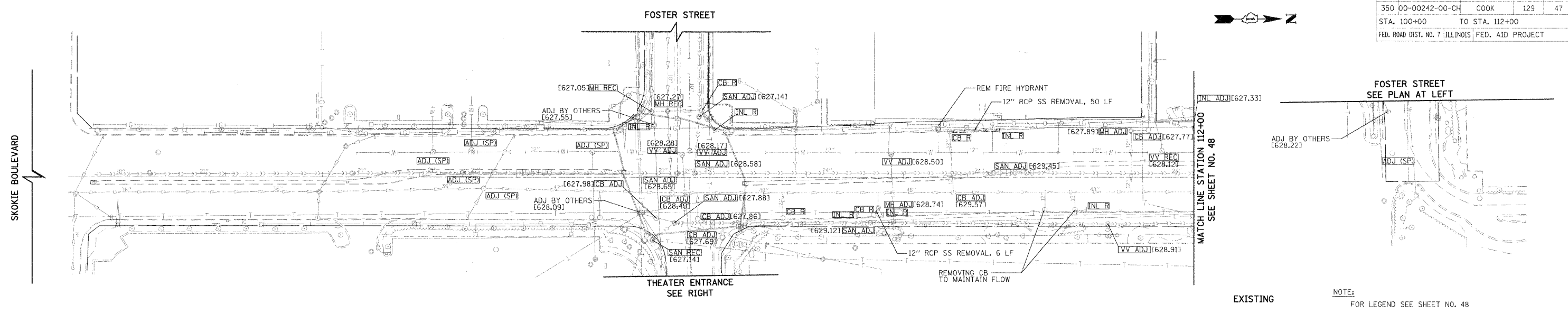


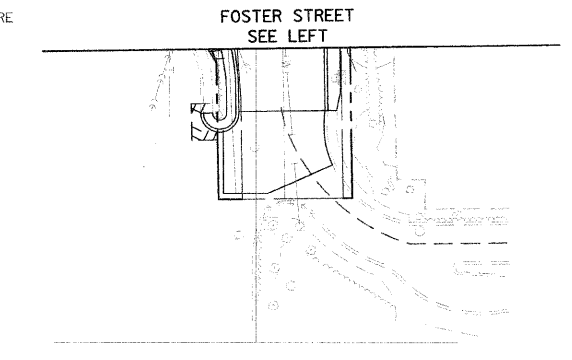
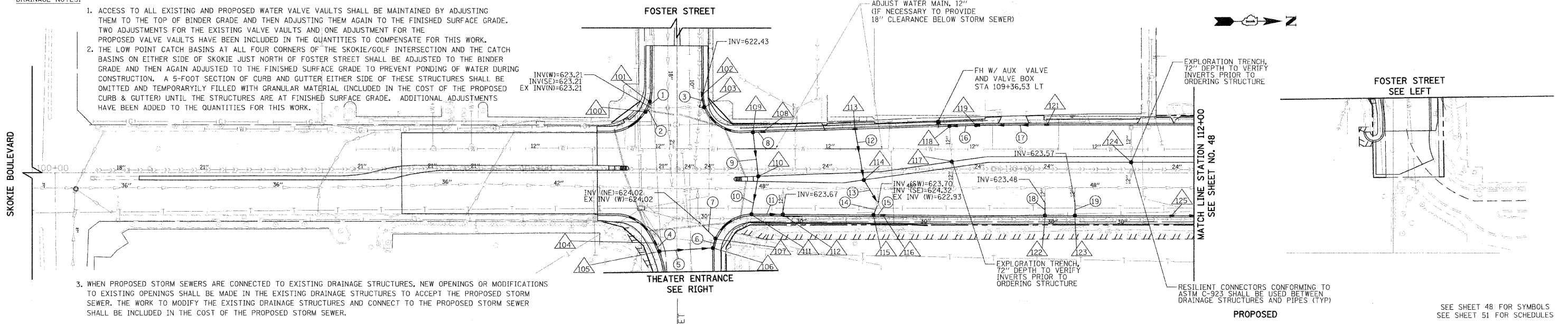
F.A.P. RTE.	SECTION	COUNTY	TOTAL SHEETS	SHEET NO.
350	00-00242-00-CH	COOK	129	47
STA. 100+00		TO STA. 112+00		
FED. ROAD DIST. NO. 7 ILLINOIS FED. AID PROJECT				



EXISTING  
NOTE:  
FOR LEGEND SEE SHEET NO. 48

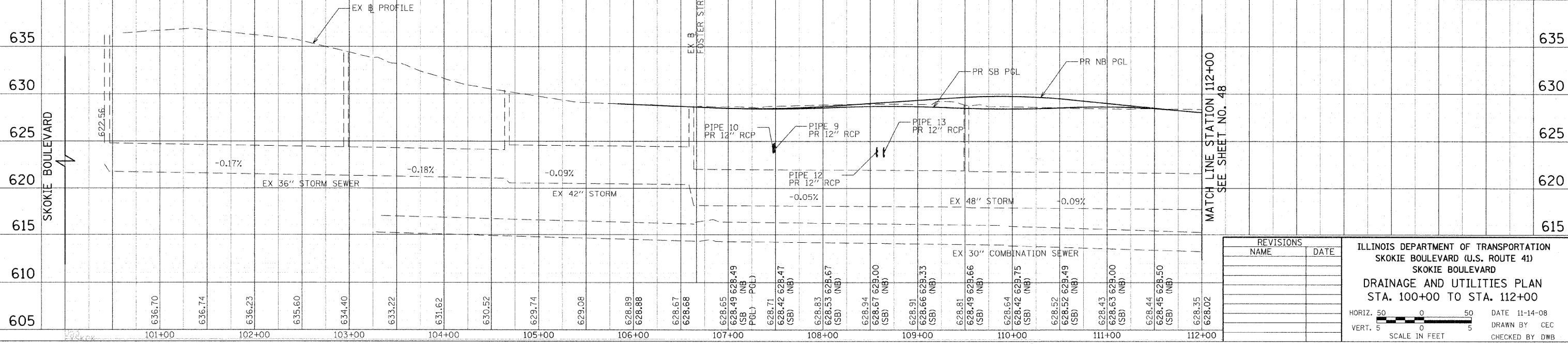
DRAINAGE NOTES:

- ACCESS TO ALL EXISTING AND PROPOSED WATER VALVE VAULTS SHALL BE MAINTAINED BY ADJUSTING THEM TO THE TOP OF BINDER GRADE AND THEN ADJUSTING THEM AGAIN TO THE FINISHED SURFACE GRADE. TWO ADJUSTMENTS FOR THE EXISTING VALVE VAULTS AND ONE ADJUSTMENT FOR THE PROPOSED VALVE VAULTS HAVE BEEN INCLUDED IN THE QUANTITIES TO COMPENSATE FOR THIS WORK.
- THE LOW POINT CATCH BASINS AT ALL FOUR CORNERS OF THE SKOKIE/GOLF INTERSECTION AND THE CATCH BASINS ON EITHER SIDE OF SKOKIE JUST NORTH OF FOSTER STREET SHALL BE ADJUSTED TO THE BINDER GRADE AND THEN AGAIN ADJUSTED TO THE FINISHED SURFACE GRADE TO PREVENT PONDING OF WATER DURING CONSTRUCTION. A 5-FOOT SECTION OF CURB AND GUTTER EITHER SIDE OF THESE STRUCTURES SHALL BE OMITTED AND TEMPORARILY FILLED WITH GRANULAR MATERIAL (INCLUDED IN THE COST OF THE PROPOSED CURB & GUTTER) UNTIL THE STRUCTURES ARE AT FINISHED SURFACE GRADE. ADDITIONAL ADJUSTMENTS HAVE BEEN ADDED TO THE QUANTITIES FOR THIS WORK.



PROPOSED  
SEE SHEET 48 FOR SYMBOLS  
SEE SHEET 51 FOR SCHEDULES

- WHEN PROPOSED STORM SEWERS ARE CONNECTED TO EXISTING DRAINAGE STRUCTURES, NEW OPENINGS OR MODIFICATIONS TO EXISTING OPENINGS SHALL BE MADE IN THE EXISTING DRAINAGE STRUCTURES TO ACCEPT THE PROPOSED STORM SEWER. THE WORK TO MODIFY THE EXISTING DRAINAGE STRUCTURES AND CONNECT TO THE PROPOSED STORM SEWER SHALL BE INCLUDED IN THE COST OF THE PROPOSED STORM SEWER.



REVISIONS	
NAME	DATE

ILLINOIS DEPARTMENT OF TRANSPORTATION  
SKOKIE BOULEVARD (U.S. ROUTE 41)  
SKOKIE BOULEVARD  
DRAINAGE AND UTILITIES PLAN  
STA. 100+00 TO STA. 112+00

HORIZ. 50 0 50  
VERT. 5 0 5  
SCALE IN FEET

DATE 11-14-08  
DRAWN BY CEC  
CHECKED BY DWB

DATE	BY	REVISION

DATE	BY	REVISION

PLOT DATE = 11/13/2008  
PLOT SCALE = 1\"/>