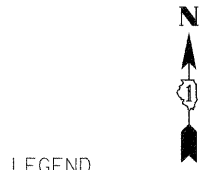


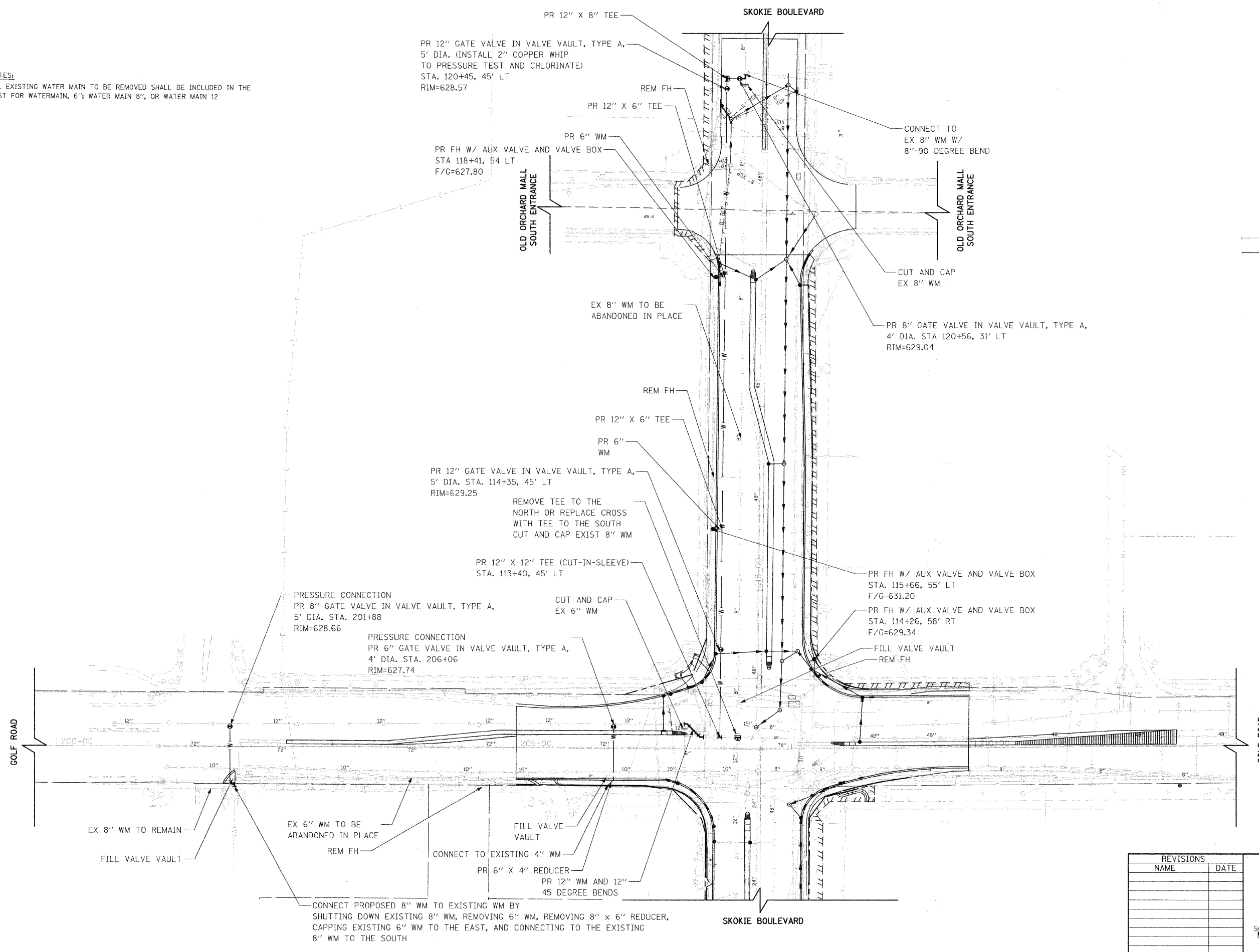
F.A.P. RTE.	SECTION	COUNTY	TOTAL SHEETS	SHEET NO.
350	00-00242-00-CH	COOK	129	53
STA.	TO STA.			
			FED. ROAD DIST. NO. 7 ILLINOIS FED. AID PROJECT	

NOTES:
ALL EXISTING WATER MAIN TO BE REMOVED SHALL BE INCLUDED IN THE COST FOR WATERMAIN, 6"; WATER MAIN 8", OR WATER MAIN 12"



LEGEND

- ⊗ EXISTING VALVE AND VAULT
- PROPOSED VALVE AND VAULT
- ⊕ EXISTING FIRE HYDRANT
- PROPOSED FIRE HYDRANT
- W— EXISTING WATER MAIN
- W— PROPOSED WATER MAIN



PR 12" X 8" TEE
PR 12" GATE VALVE IN VALVE VAULT, TYPE A, 5' DIA. (INSTALL 2" COPPER WHIP TO PRESSURE TEST AND CHLORINATE) STA. 120+45, 45' LT RIM=628.57

PR FH W/ AUX VALVE AND VALVE BOX STA 118+41, 54 LT F/G=627.80

CONNECT TO EX 8" WM W/ 8"-90 DEGREE BEND

EX 8" WM TO BE ABANDONED IN PLACE

PR 8" GATE VALVE IN VALVE VAULT, TYPE A, 4' DIA. STA 120+56, 31' LT RIM=629.04

PR 12" GATE VALVE IN VALVE VAULT, TYPE A, 5' DIA. STA. 114+35, 45' LT RIM=629.25

REMOVE TEE TO THE NORTH OR REPLACE CROSS WITH TEE TO THE SOUTH CUT AND CAP EXIST 8" WM

PR 12" X 12" TEE (CUT-IN-SLEEVE) STA. 113+40, 45' LT

PRESSURE CONNECTION PR 8" GATE VALVE IN VALVE VAULT, TYPE A, 5' DIA. STA. 201+88 RIM=628.66

PRESSURE CONNECTION PR 6" GATE VALVE IN VALVE VAULT, TYPE A, 4' DIA. STA. 206+06 RIM=627.74

PR FH W/ AUX VALVE AND VALVE BOX STA. 115+66, 55' LT F/G=631.20

PR FH W/ AUX VALVE AND VALVE BOX STA. 114+26, 58' RT F/G=629.34

FILL VALVE VAULT REM FH

CUT AND CAP EX 6" WM

EX 8" WM TO REMAIN

EX 6" WM TO BE ABANDONED IN PLACE

FILL VALVE VAULT

CONNECT TO EXISTING 4" WM PR 6" X 4" REDUCER PR 12" WM AND 12" 45 DEGREE BENDS

CONNECT PROPOSED 8" WM TO EXISTING WM BY SHUTTING DOWN EXISTING 8" WM, REMOVING 6" WM, REMOVING 8" X 6" REDUCER, CAPPING EXISTING 6" WM TO THE EAST, AND CONNECTING TO THE EXISTING 8" WM TO THE SOUTH

NOTE: MAY ENCOUNTER OLD SEWER AND WATER STUBS BETWEEN GOLF ROAD AND MALL SOUTH ENTRANCE. PLUG OLD SEWER AND WATER STUBS (INCLUDED IN THE COST OF PROPOSED WATER MAIN).

REVISIONS	
NAME	DATE

ILLINOIS DEPARTMENT OF TRANSPORTATION
SKOKIE BOULEVARD (U.S. ROUTE 41)

WATER MAIN PLAN

DATE 11-14-08
DRAWN BY SAG
CHECKED BY DWB

PLOT DATE = 11/13/2008
PLOT SCALE = AS SHOWN
PLOT USER = DWB