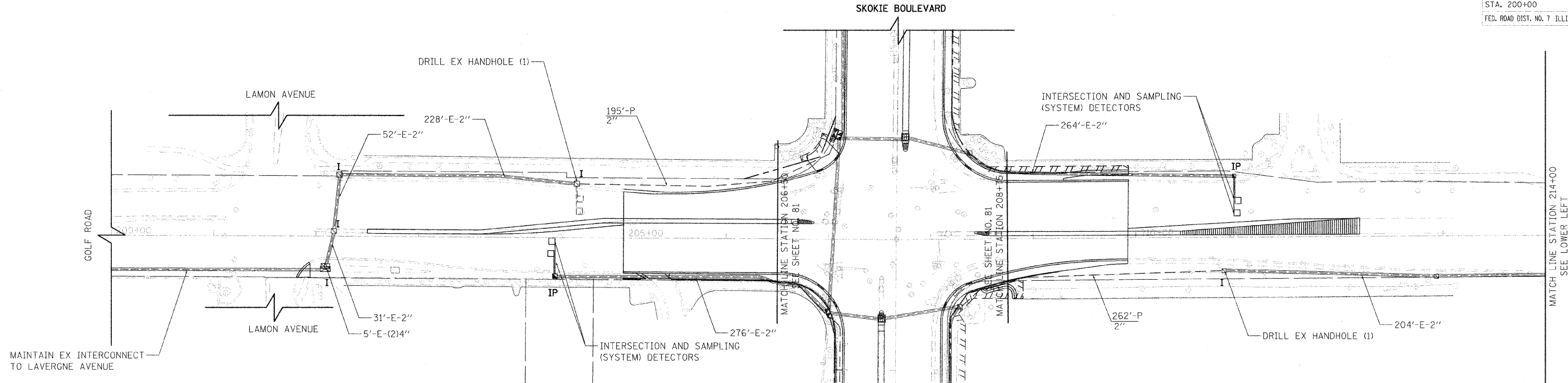
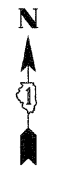


F.A.P. RTE.	SECTION	COUNTY	TOTAL SHEETS	SHEET NO.
350	00-00242-00-CH	COOK	129	82
STA. 200+00 TO STA. 227+00				
FED. ROAD DIST. NO. 7 ILLINOIS FED. AID PROJECT				



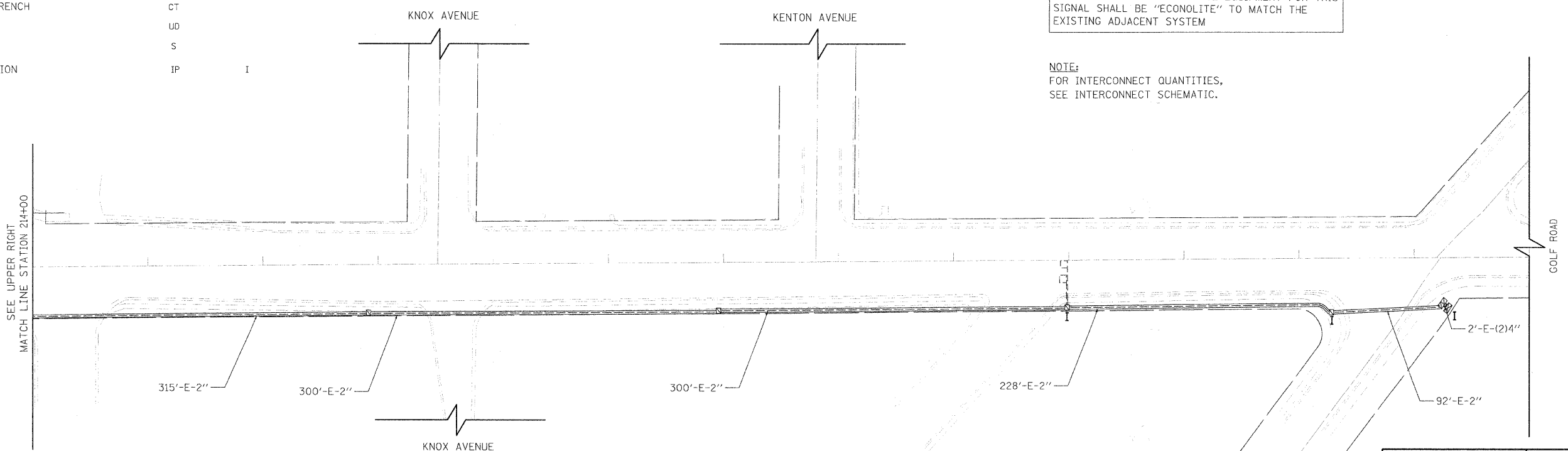
**INTERCONNECT PLAN LEGEND**

	PROPOSED	EXISTING
CONTROLLER		
HANDHOLE		
HEAVY DUTY HANDHOLE		
DOUBLE HANDHOLE		
G.S. CONDUIT IN TRENCH OR PUSHED		
DETECTOR LOOP		
COMMON TRENCH	CT	
UNIT DUCT	UD	
SYSTEM	S	
INTERSECTION	IP	I

RESTORATION OF WORK AREA, RESTORATION OF THE TRAFFIC SIGNAL WORK AREA SHALL BE INCIDENTAL TO THE RELATED PAY ITEM SUCH AS FOUNDATION, CONDUIT, HANDHOLE, TRENCH AND BACKFILL, ETC., AND NO EXTRA COMPENSATION SHALL BE ALLOWED. ALL ROADWAY SURFACES SUCH AS SHOULDERS, MEDIANS, SIDEWALKS, PAVEMENT, ETC. SHALL BE REPLACED IN KIND. ALL DAMAGE TO MOWED LAWNS SHALL BE REPLACED WITH AN APPROVED SOD, AND ALL DAMAGE TO UNMOWED FIELDS SHALL BE SEEDED IN ACCORDANCE WITH STANDARD SPECIFICATIONS 252 AND 250 RESPECTIVELY.

THE TRAFFIC SIGNAL CONTROL EQUIPMENT FOR THIS SIGNAL SHALL BE "ECONOLITE" TO MATCH THE EXISTING ADJACENT SYSTEM

NOTE:  
FOR INTERCONNECT QUANTITIES,  
SEE INTERCONNECT SCHEMATIC.



REVISIONS	
NAME	DATE

ILLINOIS DEPARTMENT OF TRANSPORTATION  
**TRAFFIC SIGNAL INTERCONNECT PLAN**  
 GOLF ROAD  
 LAMON AVENUE AND GROSS POINT ROAD

50' 0 50'  
 HORIZ. 1"=50'  
 DATE: 11-14-08

DRAWN BY SAG  
 DESIGNED BY SRS  
 CHECKED BY KMM

PLT DATE = 11/15/2008  
 FILE NAME = WFLC  
 PLOT SCALE = #SCALE#  
 USER NAME = #USER#