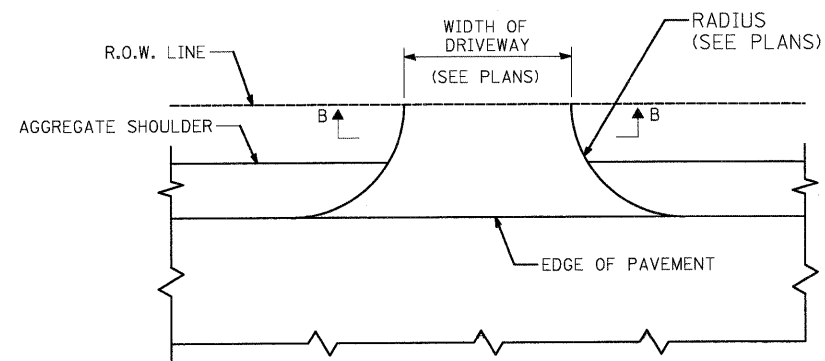
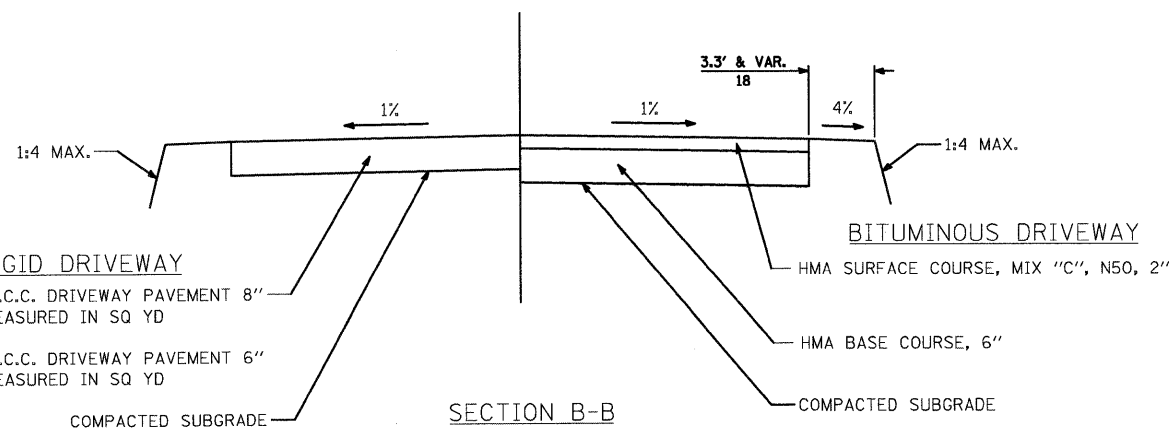


•INSTALL PER IDOT STANDARD 280001-04
 **PAID FOR AS PERIMETER EROSION BARRIER

DRAINAGE PROTECTION
 NOT TO SCALE



STABILIZED DRIVEWAYS
 (ADJACENT TO AGGREGATE SHOULDER)
 COMMERCIAL



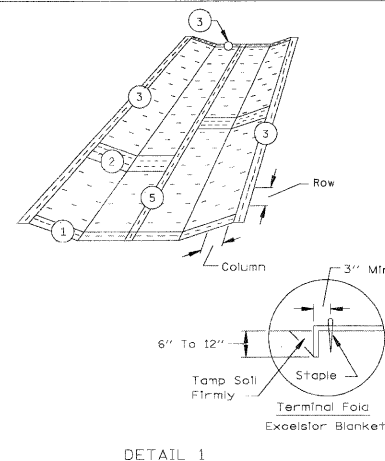
RIGID DRIVEWAY

(CE): P.C.C. DRIVEWAY PAVEMENT 8"
 MEASURED IN SQ YD

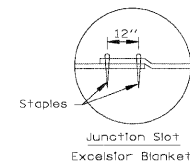
(PE): P.C.C. DRIVEWAY PAVEMENT 6"
 MEASURED IN SQ YD

SECTION B-B

EROSION CONTROL BLANKET

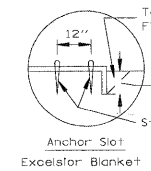


DETAIL 1

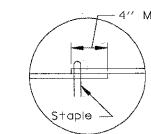


DETAIL 2

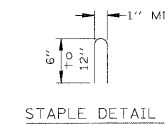
EROSION CONTROL BLANKET



DETAIL 3



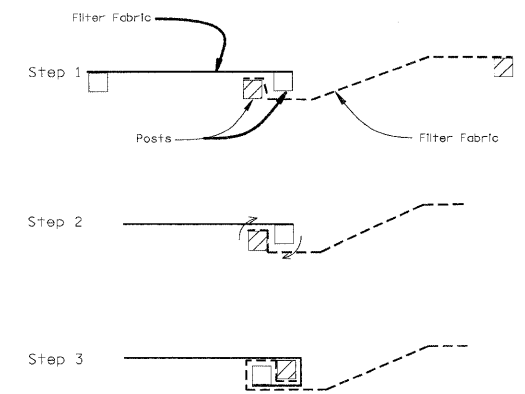
DETAIL 5



NOTES:

1. Staples are to be placed alternately, in columns approximately 2' apart and in rows approximately 3' apart. Approximately 175 staples are required per 4'x 225' roll of material and 125 staples are required per 4'x 150' roll of material.
2. Erosion control material shall be placed loosely over ground surface. Do not stretch.
3. All terminal ends and transverse laps shall be stapled at approximately 12" intervals.

SILT FENCE

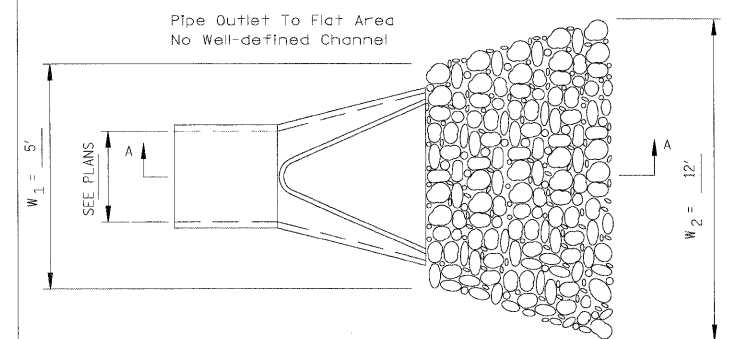


ATTACHING TWO SILT FENCES

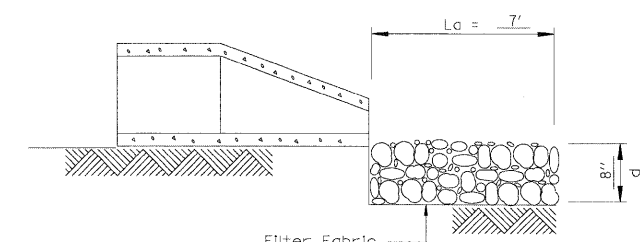
NOTES:

1. Place the end post of the second fence inside the end post of the first fence.
2. Rotate both posts at least 180 degrees in a clockwise direction to create a tight seal with the fabric material.
3. Drive both posts a minimum of 18 inches into the ground and bury the flap.

PIPE OUTLET TO FLAT AREA



PLAN



SECTION A-A

NOTES:

1. The rock riprap shall meet the IDOT requirements for the following gradation: RR 3, Quality A.

GENERAL NOTES:

- 1) DRIVEWAY SLOPES, LOCATIONS, & GEOMETRIC LAYOUT SHALL BE IN ACCORDANCE WITH THE LATEST EDITION OF THE "HANDBOOK FOR POLICY ON PERMITS FOR ACCESS DRIVEWAYS TO STATE HIGHWAYS". FOR FURTHER LAYOUT REQUIREMENTS, REFER TO ILLUSTRATIONS IN THE PERMIT HANDBOOK. DRIVEWAYS SHALL BE REPLACED IN KIND, UNLESS OTHERWISE NOTED ON PLANS.

FILE NAME = j:\2211\cad\sheet\2211-sht-det1.dgn	USER NAME = ara	DESIGNED - RJD	REVISED -
		DRAWN - ARA	REVISED -
		CHECKED - GAB	REVISED -
		DATE - 5-28-09	REVISED -
PLOT SCALE = 1:8000 1/4 IN.			
PLOT DATE = 5/27/2009			

STATE OF ILLINOIS
DEPARTMENT OF TRANSPORTATION

DETAILS
VIRGINIA ROAD

SCALE: N.T.S. SHEET NO. 1 OF 2 SHEETS STA. TO STA.

F.A.U. RTE.	SECTION	COUNTY	TOTAL SHEETS	SHEET NO.
0121	09-00362-00-PV	MCHENRY	54	33
CONTRACT NO. 63195				
FED. ROAD DIST. NO. ILLINOIS FED. AID PROJECT: M-9003(255)				