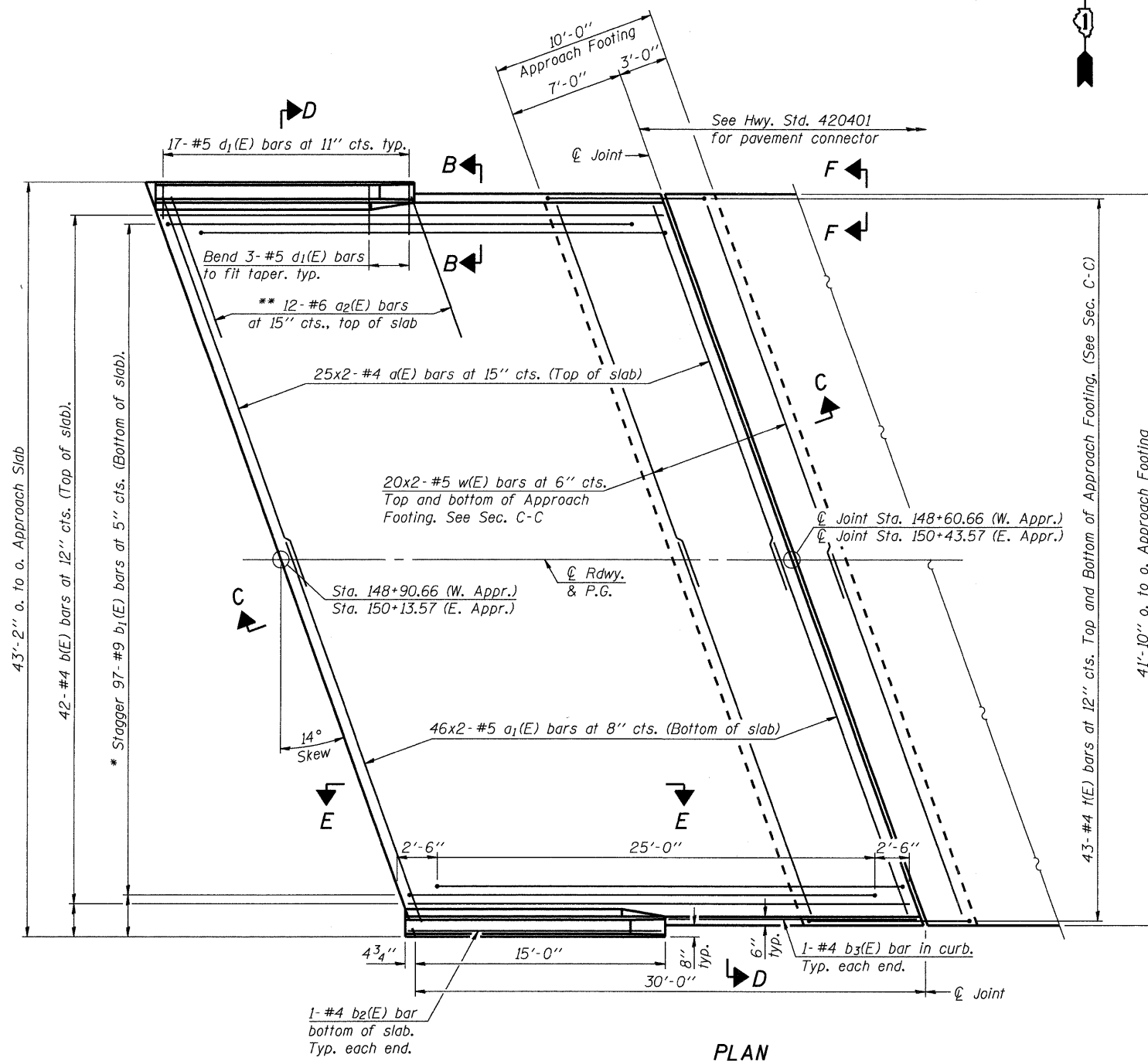


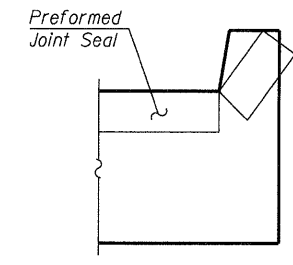
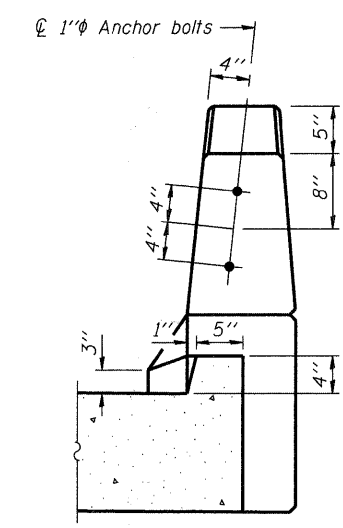
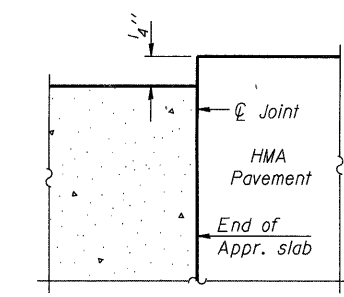
NOTES:

See sheet S-12 for Sections C-C & D-D and View E-E.
 $a(E)$, $a_1(E)$, and $w(E)$ bar spacings measured perpendicular to C.Rdwy.
 Bars indicated thus 25 x 2-#4 etc. indicates 25 lines of bars with 2 lengths per line.
 See sheet S-12 for parapet reinforcement and Bill of Materials.

*** Cost included with Concrete Superstructure.



* Tilt #9 b₁(E) bars as required to maintain clearance.
 ** Alternate with a(E) bars, typ. each parapet.



Angle Preformed Joint Seal at 45° at curbs when req'd for drainage.

FILE NAME = \\naschglp207\p66095872\ve66095873\986_cad\981_dr\awings\sheet\structure\056-3177_66095873_S11.Bridge-Approach-Slab_Detail_1.rvt

AECOM	USER NAME = debazicd PLOT SCALE = 0:1 1/4" = 1" PLOT DATE = 5/28/2009	DESIGNED - DD DRAWN - DD CHECKED - ATB DATE - 3/18/2009	REVISED - REVISED - REVISED - REVISED -	MCHENRY COUNTY DIVISION OF TRANSPORTATION	BRIDGE APPROACH SLAB DETAILS I STRUCTURE NO. 056-3177		F.A.S. RTE. 0031	SECTION 06-00323-00-BR	COUNTY MCHENRY	TOTAL SHEETS 53	SHEET NO. 30
	SCALE:	SHEET NO. 1 OF 2 SHEETS	STA.		TO STA.	CONTRACT NO. 63218			FED. ROAD DIST. NO. 1 ILLINOIS FED. AID PROJECT		