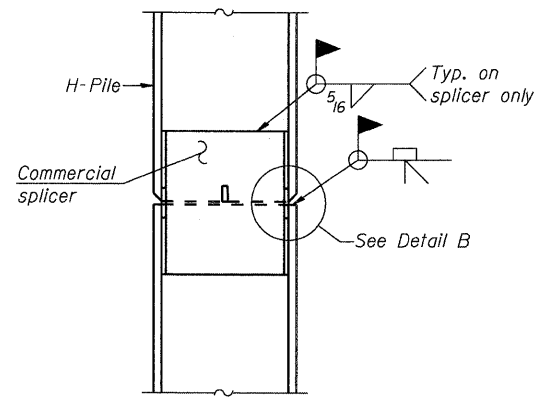
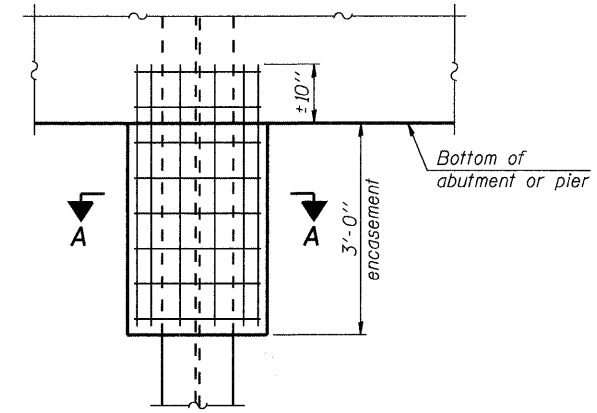


STEEL PILE TABLE

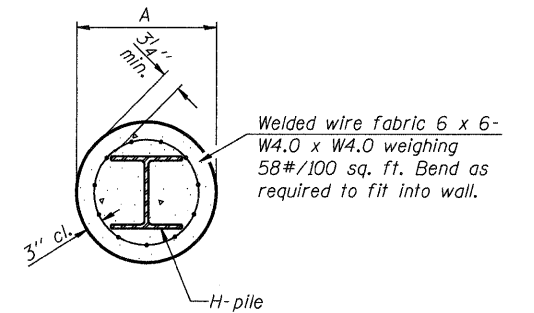
Designation	Depth d	Flange width br	Web and Flange thickness t	Encasement diameter A
HP 14x89	13 ⁷ / ₈ "	14 ³ / ₄ "	5 ⁸ / ₈ "	30"
HP 14x73	13 ⁵ / ₈ "	14 ⁵ / ₈ "	1 ¹ / ₂ "	30"



ELEVATION



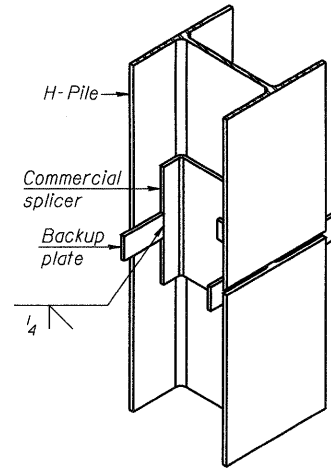
ELEVATION



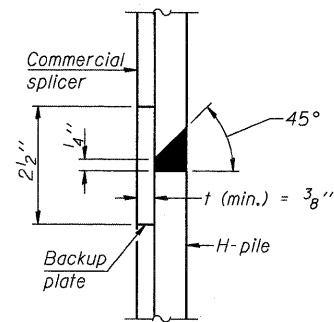
SECTION A-A

Note:
Forms for encasement may be omitted when soil conditions permit.

PILE ENCASEMENT

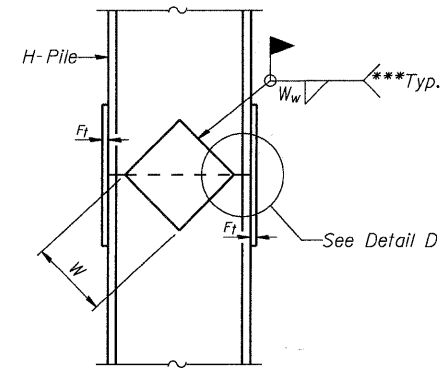


ISOMETRIC VIEW

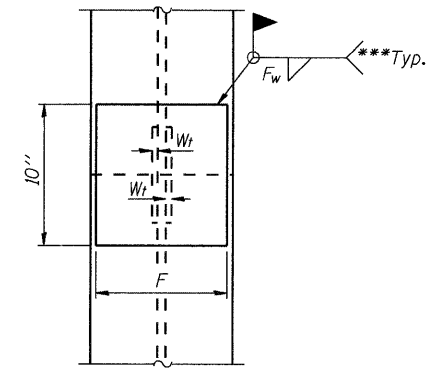


DETAIL "B"

WELDED COMMERCIAL SPLICE

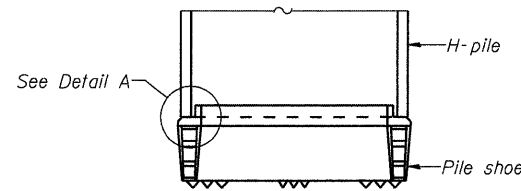


ELEVATION

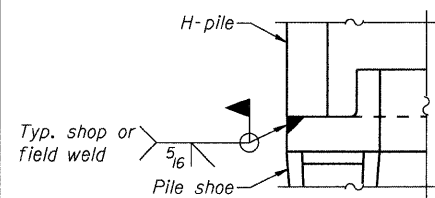


END VIEW

WELDED PLATE FIELD SPLICE

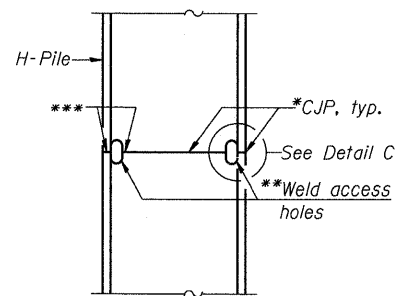


ELEVATION

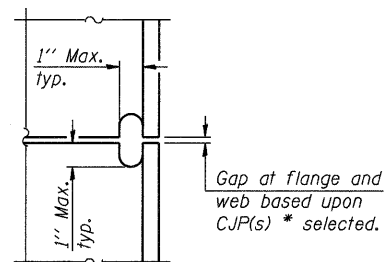


DETAIL A

H-PILE SHOE ATTACHMENT

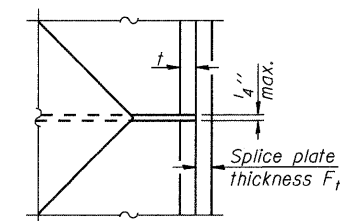


ELEVATION



DETAIL C

COMPLETE PENETRATION WELD SPLICE



DETAIL D

Designation	F	Ft	Fw	W	Wt	Ww
HP 14x89	12 ¹ / ₂ "	3 ⁴ / ₈ "	1 ¹ / ₁₆ "	7 ³ / ₄ "	5 ⁸ / ₈ "	1 ¹ / ₂ "
HP 14x73	12 ¹ / ₂ "	5 ⁸ / ₈ "	9 ¹ / ₁₆ "	7 ³ / ₄ "	5 ⁸ / ₈ "	1 ¹ / ₂ "

* Use joint conforming to Figure 3.4 in AWS D1.1, Structure Welding Code - Steel.

** Preparation per Fig. 5.2 in AWS D1.1, Structure Welding Code - Steel.

*** Interrupt welds 1/4" from end of each pile.

Note:
The steel H-piles shall be according to AASHTO M270 Grade 50.

FILE NAME = \\archg1p207\p62095873\p62095873\06-00-00\01.dwg

AECOM

USER NAME = dabezicd
PLOT SCALE = 0:1" = 1' / IN.
PLOT DATE = 5/28/2009

DESIGNED - DD
DRAWN - DD
CHECKED - ATB
DATE - 3/18/2009

REVISED -
REVISED -
REVISED -
REVISED -

**MCHENRY COUNTY
DIVISION OF TRANSPORTATION**

**PILE DETAILS
STRUCTURE NO. 056-3177**

SCALE: SHEET NO. OF SHEETS STA. TO STA.

F.A.S. RTE.	SECTION	COUNTY	TOTAL SHEETS	SHEET NO.
0031	06-00323-00-BR	MCHENRY	53	39
CONTRACT NO. 63218				
FED. ROAD DIST. NO. 1 ILLINOIS FED. AID PROJECT				