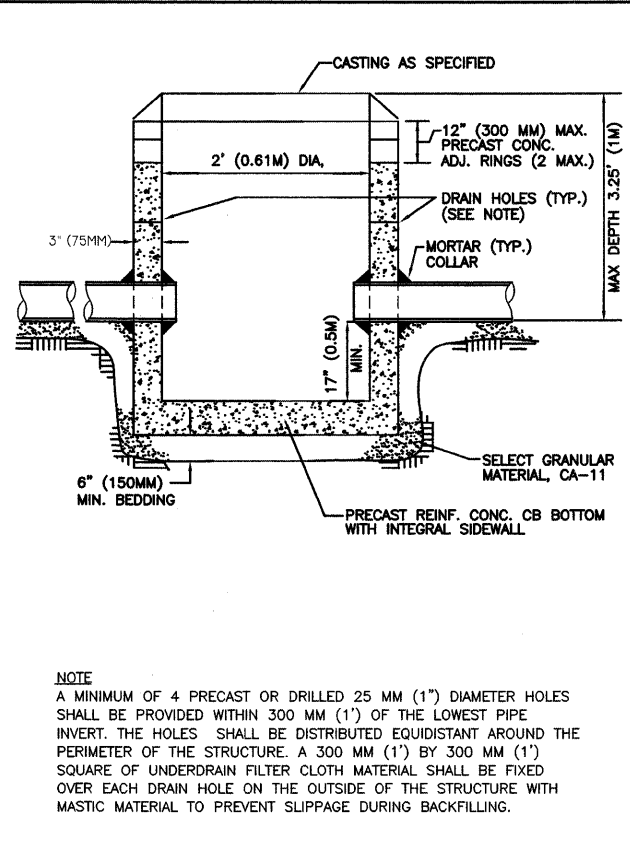
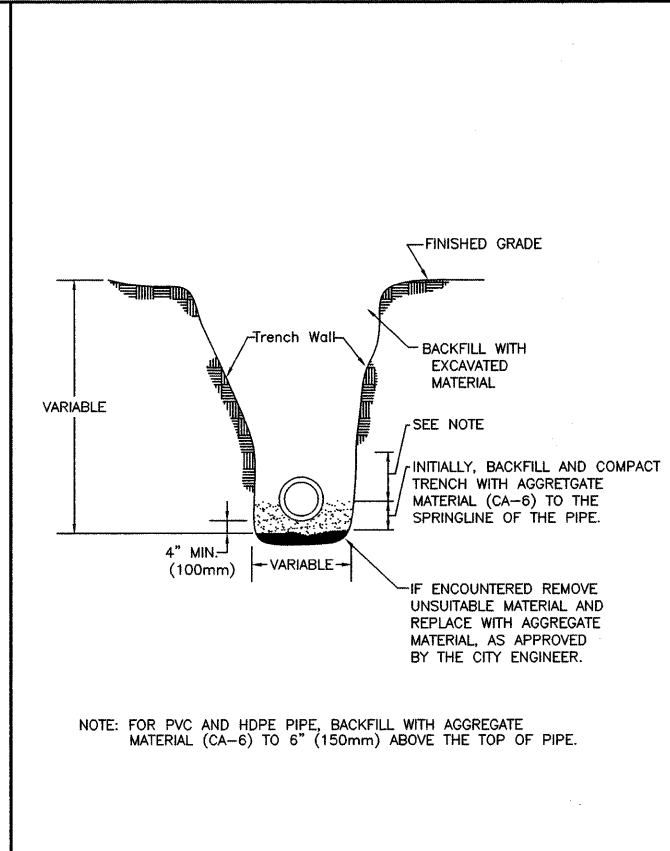


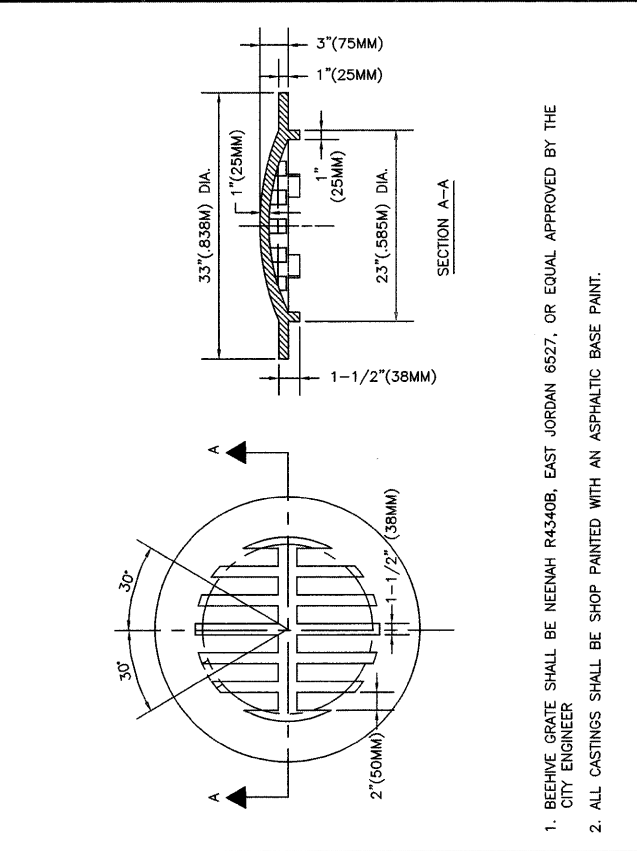
Title: FLAT SLAB TOP PRECAST REINFORCED CONCRETE
 CITY OF NAPERVILLE STANDARD DETAIL
 Approved By: DATE: 3/11/98 REV: SCALE: NTS Detail: STORM 3



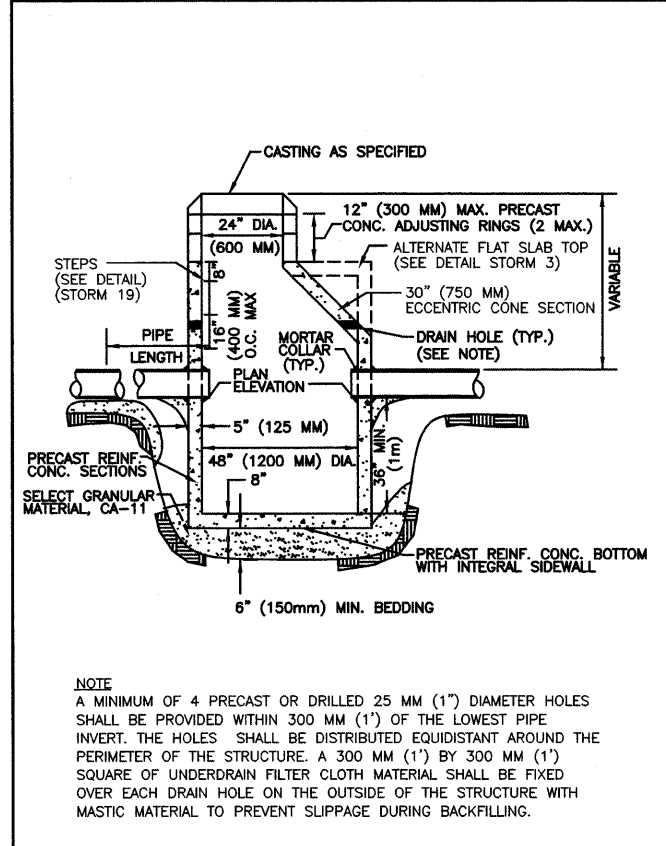
Title: CATCHBASIN TYPE C
 CITY OF NAPERVILLE STANDARD DETAIL
 Approved By: DATE: 6/12/2001 REV: SCALE: NTS Detail: STORM 5



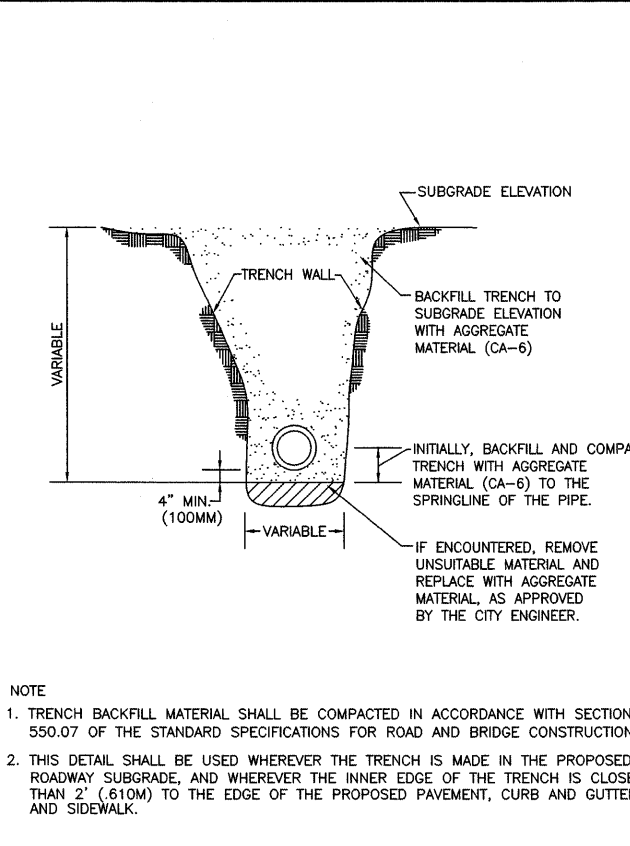
Title: STORM SEWER TRENCH SECTION IN NON-PAVED AREAS
 CITY OF NAPERVILLE STANDARD DETAIL
 Approved By: DATE: 9/15/99 REV: SCALE: NTS Detail: STORM 11



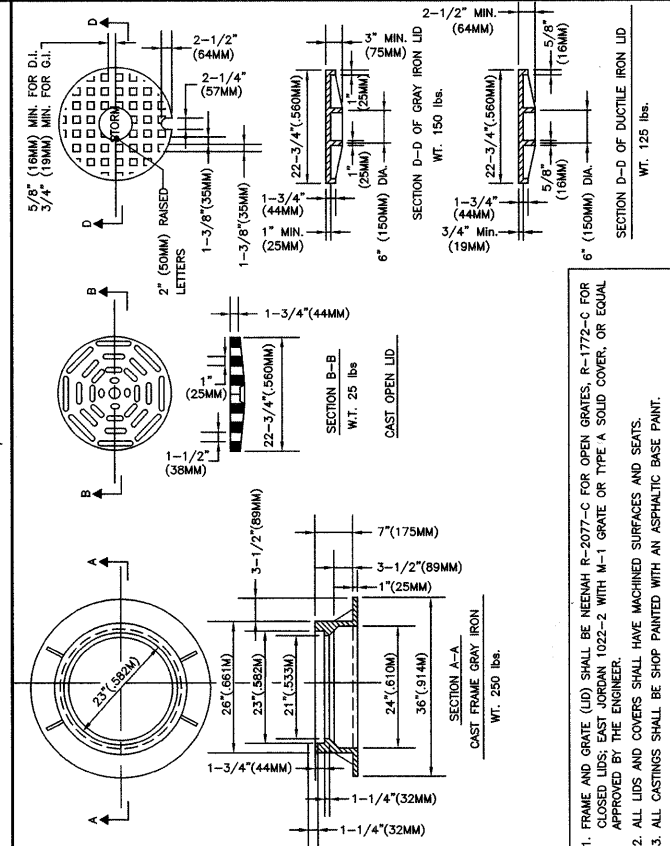
Title: BEEHIVE GRATE TYPE 1
 CITY OF NAPERVILLE STANDARD DETAIL
 Approved By: DATE: 9/15/99 REV: SCALE: NTS Detail: STORM 16



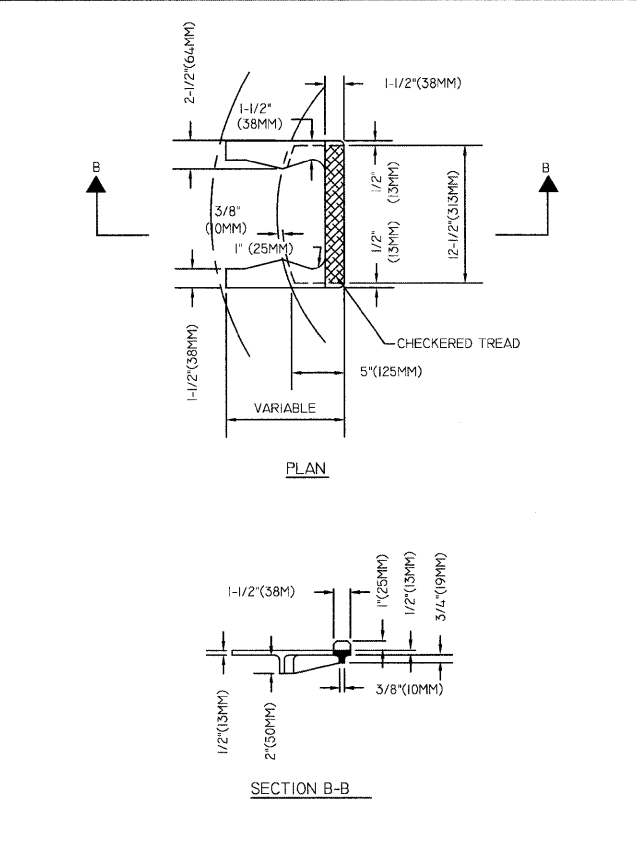
Title: CATCHBASIN TYPE A
 CITY OF NAPERVILLE STANDARD DETAIL
 Approved By: DATE: 6/12/2001 REV: SCALE: NTS Detail: STORM 4



Title: STORM SEWER TRENCH SECTION IN PAVED AREAS
 CITY OF NAPERVILLE STANDARD DETAIL
 Approved By: DATE: 2/24/98 REV: SCALE: NTS Detail: STORM 10



Title: FRAME & LID TYPE 1
 CITY OF NAPERVILLE STANDARD DETAIL
 Approved By: DATE: 9/15/99 REV: SCALE: NTS Detail: STORM 15



Title: CAST IRON STEPS
 CITY OF NAPERVILLE STANDARD DETAIL
 Approved By: DATE: 3/11/98 REV: SCALE: NTS Detail: STORM 18