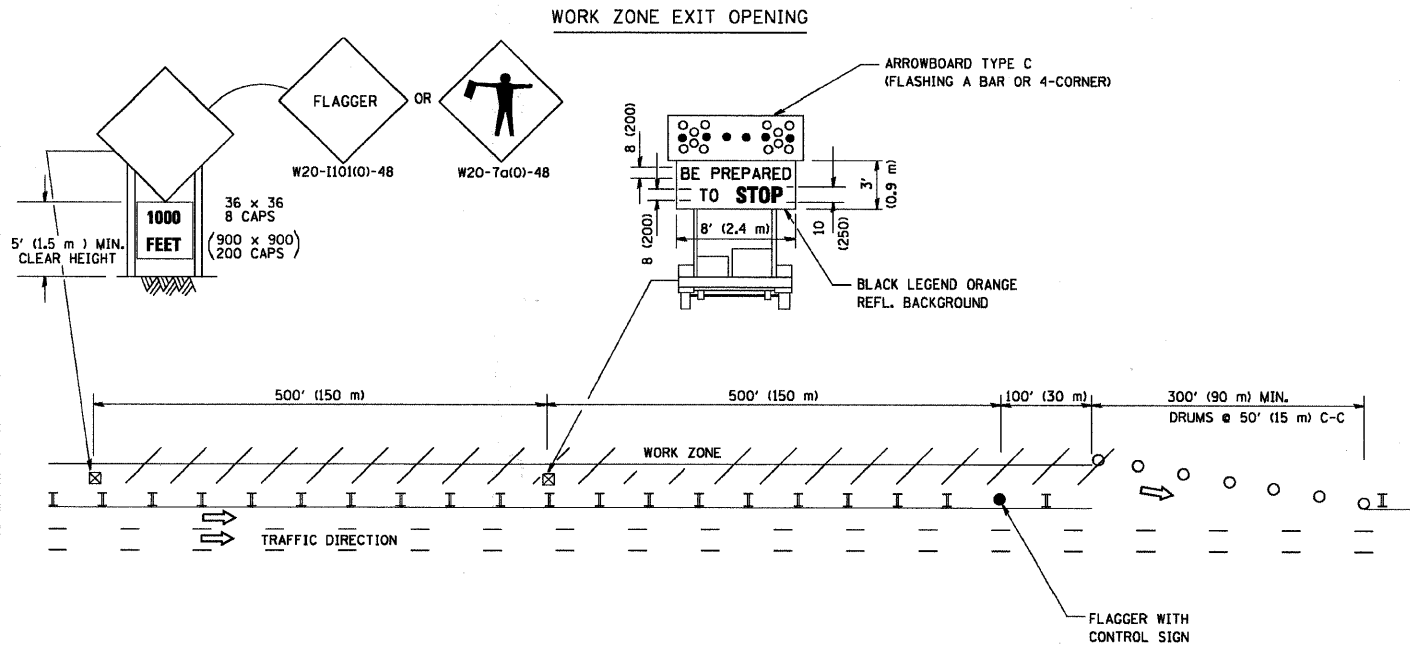


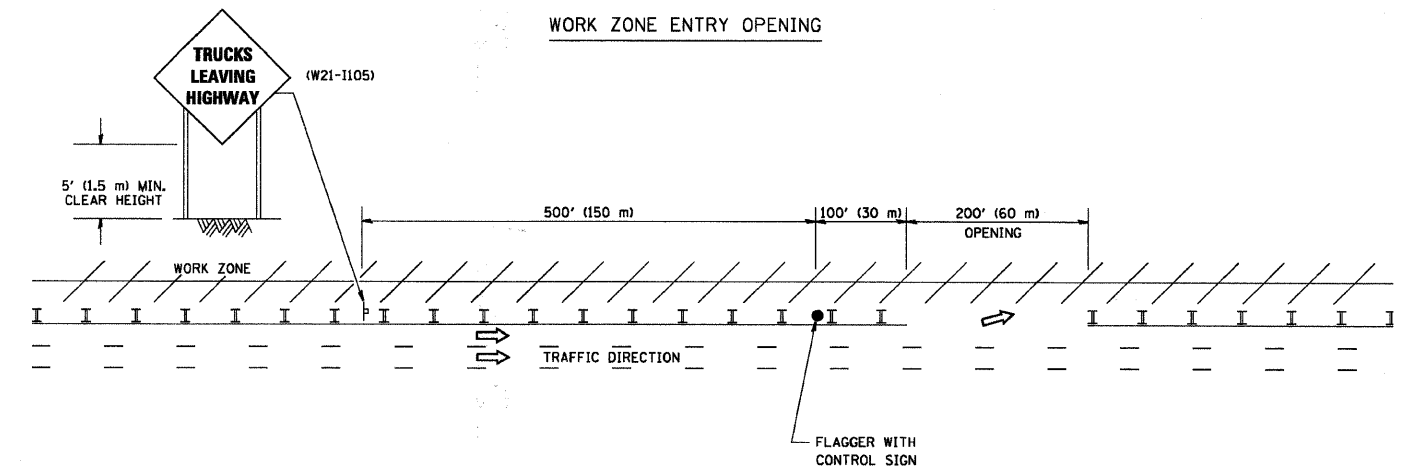
F.A.U. RTE.	SECTION	COUNTY	TOTAL SHEETS	SHEET NO.
*	09-00046-00-RS	WILL	12	11
STA.	TO STA.			
FED. ROAD DIST. NO.	ILLINOIS	FED AID PROJECT		

*FAU 0349 WALLIN DRIVE
CONTRACT NO. 63226

SIGNING FOR FLAGGING OPERATIONS AT WORK ZONE OPENINGS



WORK ZONE ENTRY OPENING



NOTES:

1. The Arrowboard, the Flagger Ahead trailer mounted sign, and the Trucks Leaving Highway sign shall be removed or turned away from traffic and the exit and entry openings shall be closed when the flagging operation ceases.
2. Work Zone Exit Openings should be a minimum of one half mile apart.
3. Exiting the work zone at any place other than at a Work Zone Exit Opening will be prohibited.
4. All vehicles shall enter the work zone at entry openings, using their turn signals to warn motorists

ALL DIMENSIONS ARE IN INCHES (MILLIMETERS) UNLESS OTHERWISE SHOWN

COPYRIGHT © 2008 BY BAXTER & WOODMAN, INC. ALL RIGHTS RESERVED.
 LICENSE NO. 09-00046-00-RS EXPRESS #3202008
 PLOT DATE: 1/4/2008
 FILED: 1/4/2008

FILE NAME = BAXTER	USER NAME = geglianobt	DESIGNED -	REVISED - D.W.S. 08-98
W:\data\d22		DRAWN -	REVISED - J.A.F. 04-03
		CHECKED -	REVISED - J.A.F. 02-06
		DATE -	REVISED - S.P.B. 01-07

**STATE OF ILLINOIS
DEPARTMENT OF TRANSPORTATION**

**SIGNING FOR FLAGGING OPERATIONS
AT WORK ZONE OPENINGS**

SCALE: NONE SHEET NO. 1 OF 1 SHEETS STA. TO STA.

F.A. RTE.	SECTION	COUNTY	TOTAL SHEETS	SHEET NO.
*	09-00046-00-RS	WILL	12	11
TC-18			CONTRACT NO. 63226	
FED. ROAD DIST. NO. 1	ILLINOIS	FED. AID PROJECT		