

FOR INDEX OF SHEETS, SEE SHEET NO. 2

FOR INDEX OF HIGHWAY STANDARDS, SEE SHEET NO. 2

PROJECT LOCATED IN THE VILLAGE OF PLAINFIELD

STATE OF ILLINOIS
 DEPARTMENT OF TRANSPORTATION
 DIVISION OF HIGHWAYS

PLANS FOR PROPOSED FEDERAL AID HIGHWAY

FAU ROUTE 0405 DRAUDEN ROAD

DRAUDEN ROAD FROM END OF SPRINGBANK CONSTRUCTION TO ALISON DRIVE RESURFACING

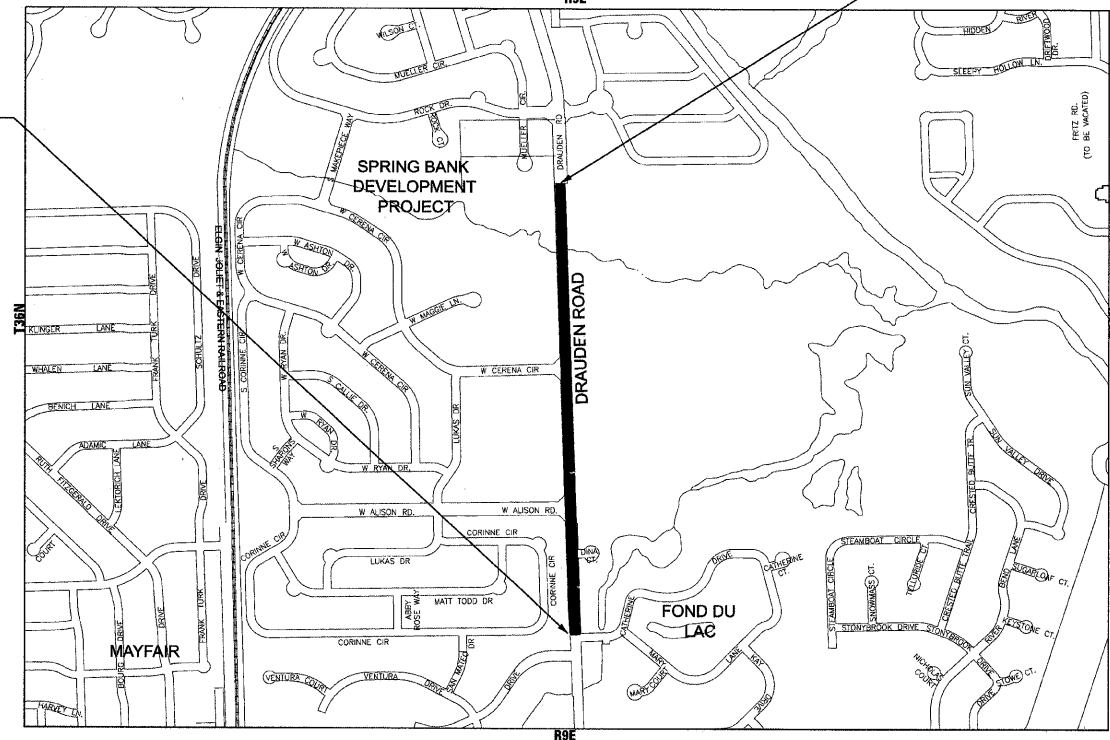
PROJECT No.: ARA-9003(383)
 SECTION No.: 09-00045-00-RS
 JOB No: C-91-724-09
 VILLAGE OF PLAINFIELD
 WILL COUNTY

TRAFFIC DATA
 DRAUDEN ROAD
 POSTED & DESIGN SPEED LIMIT = 40 MPH
 2007 ADT = 6,400

PROJECT NO.: ARA-9003(383)
 FAU 0405 DRAUDEN ROAD
 PROJECT BEGINS STA 1+00

PROJECT NO.: ARA-9003(383)
 FAU 0405 DRAUDEN ROAD
 PROJECT ENDS STA 35+00

LOCATION MAP
 (NOT TO SCALE)



PLAINFIELD TOWNSHIP
 GROSS LENGTH OF IMPROVEMENT = 3,400 LF OR 0.64 MILES
 NET LENGTH OF IMPROVEMENT = 3,400 LF OR 0.64 MILES

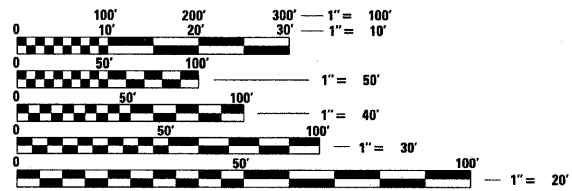


F.A.U. RTE.	SECTION	COUNTY	TOTAL SHEETS	SHEET NO.
•	09-00045-00-RS	WILL	11	1
STA.	TO STA.			
FED. ROAD DIST. NO.	ILLINOIS	FED AID PROJECT		
• FAU 0405 DRAUDEN ROAD CONTRACT NO. 63227				



LOCATION OF SECTION INDICATED THIS: [Symbol]

BAXTER & WOODMAN, INC.
 STATE OF ILLINOIS - PROFESSIONAL DESIGN FIRM
 LICENSE NO. - 184-001121 - EXPIRES 4/30/2011



FULL SIZE PLANS HAVE BEEN PREPARED USING STANDARD ENGINEERING SCALES. REDUCED SIZED PLANS WILL NOT CONFORM TO STANDARD SCALES. IN MAKING MEASUREMENTS ON REDUCED PLANS, THE ABOVE SCALES MAY BE USED.

J.U.L.I.E.
 JOINT UTILITY LOCATION INFORMATION FOR EXCAVATION
 1-800-892-0123

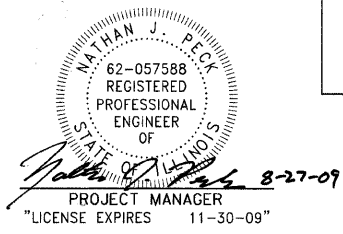
STATE OF ILLINOIS
 DEPARTMENT OF TRANSPORTATION
 DIVISION OF HIGHWAYS

APPROVED: *[Signature]*
 LOCAL AGENCY REPRESENTATIVE

PASSED: August 31, 2009
[Signature]
 LOCAL ROADS ENGINEER

RELEASING FOR BID
 BASED ON LIMITED REVIEW: SEPTEMBER 1, 2009
[Signature]
 DEPUTY DIRECTOR OF
 HIGHWAYS, REGION 1 ENGINEER

PRINTED BY THE AUTHORITY
 OF THE STATE OF ILLINOIS



CONTRACT NO. 63227

Burlington, Wisconsin Crystal Lake, Illinois DeKalb, Illinois Itasca, Illinois (Mokena, Illinois) Grayslake, Illinois Plainfield, Illinois Madison, Wisconsin Chicago, Illinois
 262.763.7834 815.459.1260 815.787.3111 630.773.1870 708.478.2090 847.223.5088 815.609.7425 608.347.1542 312.578.0050

(OFFICE WHICH PREPARED PLANS)

B&W PROJECT NO.: 090356.40 DATE: 06-29-09

COPYRIGHT © 2009 BY BAXTER & WOODMAN, INC.
 STATE OF ILLINOIS - PROFESSIONAL DESIGN FIRM
 LICENSE NO. - 184-001121 - EXPIRES 4/30/2011
 PLOTTED BY: SDATE
 FIELD ENGINEER: MELCHOR MANGOBA, P.E. (847-705-4408)

GENERAL NOTES

- ALL CONSTRUCTION SHALL BE DONE IN ACCORDANCE WITH THE DETAILS IN THE PLANS, THE SPECIAL PROVISIONS INCLUDED IN THE CONTRACT DOCUMENTS, AND THE LATEST EDITION OF THE FOLLOWING STATE OF ILLINOIS SPECIFICATIONS: "THE STANDARD SPECIFICATIONS FOR ROAD AND BRIDGE CONSTRUCTION" (REFERRED TO AS THE "STANDARD SPECIFICATIONS"), THE "SUPPLEMENTAL SPECIFICATIONS AND RECURRING SPECIAL PROVISIONS", THE "MANUAL ON UNIFORM TRAFFIC CONTROL DEVICES FOR STREETS AND HIGHWAYS" AND THE "MANUAL OF TEST PROCEDURES FOR MATERIALS".
- THE CONTRACTOR SHALL HAVE THE RESPECTIVE UTILITY COMPANIES FIELD LOCATE ALL THEIR FACILITIES PRIOR TO BEGINNING CONSTRUCTION. THE CONTRACTOR SHALL ALSO VERIFY THE DEPTHS OF THE EXISTING UTILITIES IF NECESSARY. ALL RELOCATION OR LOWERING OF UTILITIES SHALL BE COORDINATED BY THE CONTRACTOR.
- THE CONTRACTOR SHALL BE RESPONSIBLE FOR THE PROTECTION OF ALL UNDERGROUND OR SURFACE UTILITIES EVEN THOUGH THEY MAY NOT BE SHOWN ON THE PLANS. ANY UTILITY THAT IS DAMAGED DURING CONSTRUCTION SHALL BE REPAIRED OR REPLACED AT THE CONTRACTOR'S EXPENSE TO THE SATISFACTION OF THE ENGINEER OR VILLAGE.
- THE CONTRACTOR SHALL NOTIFY THE ENGINEER AT LEAST 48 HOURS IN ADVANCE OF BEGINNING WORK TO OBTAIN VILLAGE UTILITY LOCATIONS AND SHALL COORDINATE ALL CONSTRUCTION OPERATIONS WITH THE ENGINEER.
- MATERIALS RESULTING FROM THE REMOVAL OF PAVEMENT, DRIVEWAYS, CURB AND GUTTER, HOT-MIX ASPHALT SURFACES, SIDEWALKS AND EXCAVATION FOR NEW SIDEWALKS ETC. SHALL BE REMOVED AT THE END OF EACH DAY TO AN APPROVED SITE. IN THE JUDGMENT OF THE VILLAGE, SHOULD IT BE NECESSARY TO REMOVE SUCH MATERIALS, THE VILLAGE WILL HAVE THE MATERIAL REMOVED AND THE CONTRACTOR WILL BE BILLED (CHARGED) ACCORDINGLY.
- THE CONTRACTOR IS RESPONSIBLE FOR OBTAINING ALL WATER REQUIRED FOR THIS PROJECT FROM AN OFFSITE LOCATION.
- IT WILL BE THE CONTRACTOR'S RESPONSIBILITY TO NOTIFY RESIDENTS AND THE VILLAGE WHEN ACCESS TO THEIR DRIVEWAYS WILL BE TEMPORARILY CLOSED DUE TO DRIVEWAY REPLACEMENT. THE CONTRACTOR SHALL DISTRIBUTE NOTICES PROVIDED BY THE VILLAGE TO RESIDENTS. EVERY EFFORT SHALL BE MADE TO ACCOMMODATE ACCESS TO THESE PROPERTIES INCLUDING KNOCKING ON DOORS WHEN DRIVEWAYS ARE ABOUT TO BE CLOSED.
- THE CONTRACTOR SHALL PROTECT AND CAREFULLY PRESERVE ALL SECTION OR SUBSECTION MONUMENTS OR PROPERTY OR REFERENCE MARKERS UNTIL THE OWNERS, HIS AGENT OR AN AUTHORIZED SURVEYOR HAS WITNESSED OR OTHERWISE REFERENCED THEIR LOCATIONS.
- THE CONTRACTOR SHALL NOTIFY IDOT BUREAU OF MATERIALS (PHONE 847-705-4337) AT LEAST 24 HOURS PRIOR TO THE PLACEMENT OF HMA OR CONCRETE.
- ANY SIGNS OR MAILBOXES THAT ARE IN CONFLICT WITH THE PROPOSED CONSTRUCTION SHALL BE REMOVED AND REPLACED IN ACCORDANCE WITH VILLAGE STANDARDS AND INCLUDED IN THE COST OF THE CONTRACT. MAIL SERVICE SHALL BE MAINTAINED AT ALL TIMES.
- THE CONTRACTOR SHALL PROVIDE AND INSTALL TWO (2) WEIGHTED SANDBAGS ON EACH TYPE I OR TYPE II BARRICADE USED. ONE (1) WEIGHTED SANDBAG SHALL BE PLACED ACROSS EACH BOTTOM RAIL.
- THE PRIME COAT APPLICATION RATE SHALL BE 0.1 GAL/SY.
- THE LOCATIONS OF THE CLASS D PATCHES SHALL BE DETERMINED BY THE ENGINEER IN THE FIELD.
- ALL AGGREGATE USED ON THIS PROJECT SHALL BE CRUSHED MATERIAL.
- THE QUANTITIES FOR PATCHING WILL NOT EXCEED THE AMOUNT LISTED IN THE SUMMARY OF QUANTITIES.
- THE DAYS PAVING OPERATION SHALL RESULT IN A SINGLE TRANSVERSE JOINT. ANY COLD LONGITUDINAL JOINTS WILL NOT BE ACCEPTED. PROVIDING A SINGLE TRANSVERSE JOINT SHALL BE ACCOMPLISHED BY PAVING ONE LANE OF SUFFICIENT LENGTH THAT WILL ALLOW FOR THE PAVING OF THE ADJACENT LANE IN THE SAME DAY.

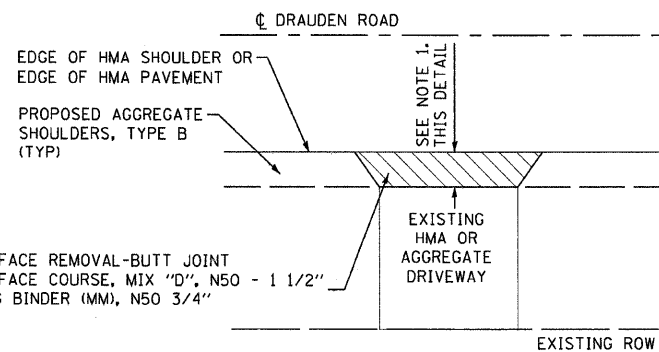
- THE CONTRACTOR SHALL UTILIZE A MECHANICAL SWEEPER TO CLEAN STREETS AFFECTED BY CONTRACTORS OPERATIONS, INCLUDING HAUL ROUTES, AT LEAST TWICE PER WEEK AND ADDITIONALLY AS DIRECTED BY THE ENGINEER. THIS WORK SHALL BE INCLUDED IN THE COST OF CONSTRUCTION.
- NO DAMAGE TO PARKWAYS IS PLANNED AS PART OF THESE IMPROVEMENTS. ANY AND ALL RESTORATION OF DAMAGED PARKWAYS SHALL CONSIST OF NECESSARY SUB-GRADE MATERIAL AS APPROVED BY THE ENGINEER, TOPSOIL 4-INCH AND NATIVE SOD IN ACCORDANCE WITH SECTION 1081.03. RESTORATION SHALL BE INCLUDED IN THE PAY ITEM WHICH CAUSED THE DISTURBANCE.

F.A.U. RTE.	SECTION	COUNTY	TOTAL SHEETS	SHEET NO.
•	09-00045-00-RS	WILL	11	2
STA.		TO STA.		
FED. ROAD DIST. NO	ILLINOIS	FED AID PROJECT		
C-91-724-09		ARA-9003-(383)		

*FAU 0405 DRAUDEN ROAD
CONTRACT NO. 63227

INDEX OF SHEETS

SHEET NO.	TITLE
1	COVER SHEET
2	INDEX OF SHEETS, HIGHWAY STANDARDS, AND GENERAL NOTES
3	SUMMARY OF QUANTITIES/SCHEDULE OF QUANTITIES
4	TYPICAL SECTIONS AND HMA MIXTURE REQUIREMENTS
5-6	PLAN SHEETS
7	DISTRICT 1 DETAIL - BD-32 BUTT JOINTS AND HMA TAPER DETAILS
8	DISTRICT 1 DETAIL - TC-10 TRAFFIC CONTROL AND PROTECTION FOR SIDE ROADS, INTERSECTIONS, AND DRIVEWAYS
9	DISTRICT 1 DETAIL - TC-13 DISTRICT ONE TYPICAL PAVEMENT MARKINGS
10	DISTRICT 1 DETAIL - TC-18 SIGNING FOR FLAGGING OPERATIONS AT WORK ZONE OPENINGS
11	DISTRICT 1 DETAIL - TC-22 ARTERIAL ROAD INFORMATION SIGN



- NOTES: 1. 5' MIN WHEN MATCHING EXISTING HMA DRIVEWAY
3' MIN. WHEN MATCHING EXISTING AGGREGATE DRIVEWAY

HMA DRIVEWAY DETAIL
NO SCALE

HIGHWAY STANDARDS

000001-05	STANDARD SYMBOLS, ABBREVIATIONS, AND PATTERNS
442201-03	CLASS C AND D PATCHES
482011-03	HMA SHLD. STRIPS/SHLDS. WITH RESURFACING OR WIDENING AND RESURFACING PROJECTS
701011-02	OFF-RD MOVING OPERATIONS, 2L, 2W DAY ONLY
701301-03	LANE CLOSURE, 2L, 2W, SHORT TIME OPERATIONS
701311-03	LANE CLOSURE, 2L, 2W, MOVING OPERATIONS-DAY ONLY
701501-05	URBAN LANE CLOSURE, 2L, 2W, UNDIVIDED
701801-04	LANE CLOSURE MULTILANE, 1W OR 2W CROSSWALK OR SIDEWALK CLOSURE
701901-01	TRAFFIC CONTROL DEVICES
780001-02	TYPICAL PAVEMENT MARKINGS

CONTRACT & DESIGN BY: BAXTER & WOODMAN, INC.
 STATE OF ILLINOIS PROFESSIONAL ENGINEERING
 LICENSE NO. 184-0012 - EXPRES. 4/30/2011
 8/27/2009 5:56:02 PM
 \\c:\p\boxwood\com\proj\cts\moke\mof\file\0405\0356-Dr\drauden\lapp\cadd\511\0511\DRAWINGS\DDNS\090356-GenNotes.sht



USER NAME = 566bcd	DESIGNED - JGH	REVISED - IDOT REVIEW 6-29-09
FILE NAME = 040356-GenNotes.sht	DRAWN - BCD	REVISED -
PLOT DATE = 8/27/2009	CHECKED - NJP	REVISED -
	DATE - 4-30-09	REVISED -

**VILLAGE OF PLAINFIELD, ILLINOIS
FAU ROUTE 0405 DRAUDEN ROAD
(LAPP) IMPROVEMENTS**

INDEX OF SHEETS, HIGHWAY STANDARDS, DETAILS AND GENERAL NOTES	
SCALE: NONE	STA. TO STA.

F.A.U. RTE.	SECTION	COUNTY	TOTAL SHEETS	SHEET NO.
•	09-00045-00-RS	WILL	11	2
FED. ROAD DIST. NO.		CONTRACT NO. 63227		
ILLINOIS		FED. AID PROJECT		

SUMMARY OF QUANTITIES

CODE NO.	PAY ITEM	UNIT	CONSTRUCTION CODE 1000 TOTAL QUANTITY
20201006	GRADING AND SHAPING SHOULDERS	UNIT	34
40600100	BITUMINOUS MATERIALS (PRIME COAT)	GAL	822
40600300	AGGREGATE (PRIME COAT)	TON	17
40600625	LEVELING BINDER (MACHINE METHOD) N50	TON	355
40600982	HOT-MIX ASPHALT SURFACE REMOVAL - BUTT JOINT	SQ YD	789
40603335	HOT-MIX ASPHALT SURFACE COURSE, MIX "D", N50	TON	709
44201723	CLASS D PATCHES, TYPE IV, 6"	SQ YD	1507
48101200	AGGREGATE SHOULDERS, TYPE B	TON	250
70101700	TRAFFIC CONTROL AND PROTECTION	LSUM	1
67100100	MOBILIZATION	LSUM	1
78000200	THERMOPLASTIC PAVEMENT MARKING LINE, 4"	FOOT	7650
X0322256	TEMPORARY INFORMATION SIGNING	SQ FT	90

• INDICATES SPECIALTY ITEM

PATCHING SCHEDULE

BEGIN STATION	END STATION	O/S	WIDTH (FOOT)	AREA (SQ YD)
1+00	1+56	FULL WIDTH	22.0	137.0
1+56	2+10	RT	10.5	63.0
2+75	3+45	LT	11.0	86.0
4+25	5+50	LT	11.0	153.0
5+50	7+00	LT	5.5	92.0
12+00	13+00	RT	11.0	123.0
15+50	16+00	FULL WIDTH	21.0	117.0
19+20	20+00	FULL WIDTH	21.0	187.0
21+75	22+45	LT	11.0	86.0
24+00	25+00	LT	5.5	62.0
28+00	29+00	LT	5.5	62.0
28+10	29+00	RT	5.5	55.0
30+00	30+75	FULL WIDTH	20.0	167.0
30+75	31+75	RT	10.5	117.0
TOTAL				1507.0

F.A.U. RTE.	SECTION	COUNTY	TOTAL SHEETS	SHEET NO.
•	09-00045-00-RS	WILL	11	3
STA.	TO STA.			
FED. ROAD DIST. NO.	ILLINOIS	FED AID PROJECT		
C-91-724-09		ARA-9003-(383)		

•FAU 0405 DRAUDEN ROAD
CONTRACT NO. 63227

COPYRIGHT © 2009 BY BAXTER & WOODMAN, INC.
 STATE OF ILLINOIS - PROFESSIONAL DESIGN FIRM
 LICENSE NO. - 04-00121 - EXPIRES 4/30/2011
 2/27/2009 2:48:55 PM
 \\c:\p\ba\woodman\proj\ba\090356-09\0356-500.dwg



USER NAME = 566bcd	DESIGNED - JGH	REVISED - IDOT REVIEW 6-29-09
	DRAWN - BCD	REVISED -
FILE NAME = 090356-500.dwg	CHECKED - NJP	REVISED -
PLOT DATE = 8/27/2009	DATE - 4-30-09	REVISED -

**VILLAGE OF PLAINFIELD, ILLINOIS
FAU ROUTE 0405 DRAUDEN ROAD
(LAPP)IMPROVEMENTS**

SUMMARY OF QUANTITIES

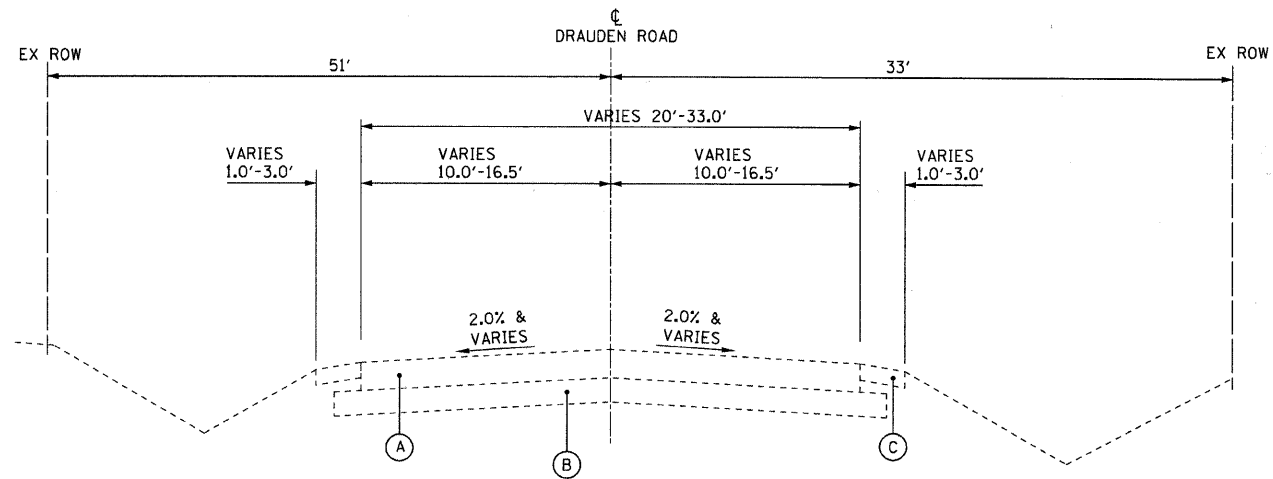
SCALE: NONE

STA. TO STA.

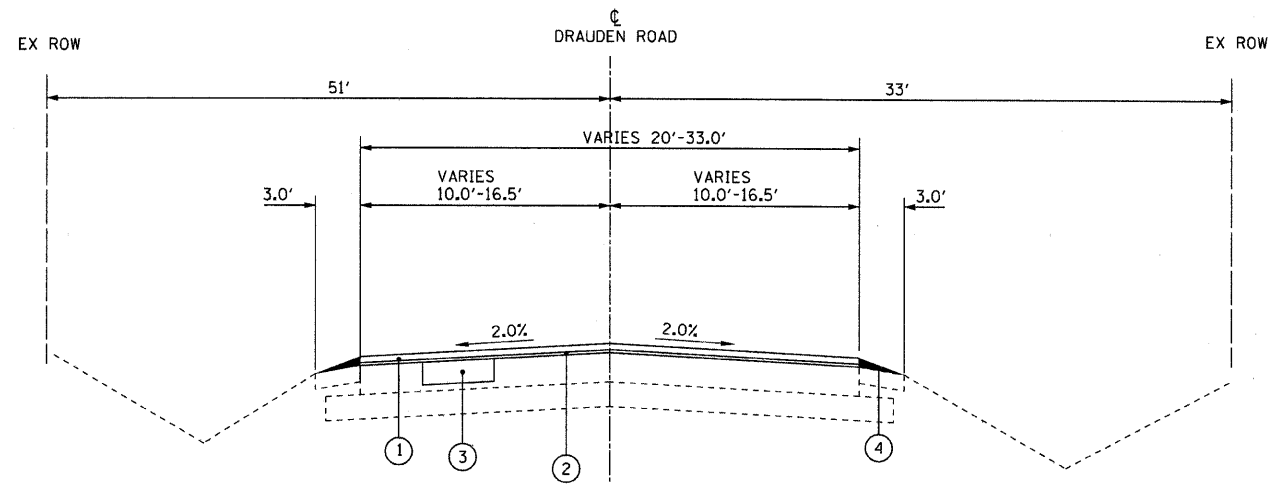
F.A.U. RTE.	SECTION	COUNTY	TOTAL SHEETS	SHEET NO.
•	09-00045-00-RS	WILL	11	3
FED. ROAD DIST. NO.	ILLINOIS	FED. AID PROJECT		
		CONTRACT NO. 63227		

F.A.U. RTE.	SECTION	COUNTY	TOTAL SHEETS	SHEET NO.
* 09-00045-00-RS		WILL	11	4
STA.	TO STA.			
FED. ROAD DIST. NO. C-91-724-09	ILLINOIS	FED AID PROJECT ARA-9003-(383)		

*FAU 0405 DRAUDEN ROAD
CONTRACT NO. 63227



**EXISTING TYPICAL SECTION
DRAUDEN ROAD**



**PROPOSED TYPICAL SECTION
DRAUDEN ROAD**

EXISTING LEGEND

- (A) HOT-MIX ASPHALT PAVEMENT, 4" - 8 5/8"
- (B) AGGREGATE BASE COURSE, 1 1/4" - 8"
- (C) AGGREGATE SHOULDERS, VARIABLE DEPTH

PROPOSED LEGEND

- (1) HOT-MIX ASPHALT SURFACE COURSE, MIX "D", N50 - 1 1/2"
- (2) LEVELING BINDER (MACHINE METHOD), N50 - 3/4"
- (3) CLASS D PATCHES, TYPE I - IV, 6-INCH
- (4) AGGREGATE SHOULDERS, TYPE B, 2"

HOT-MIX ASPHALT MIXTURE REQUIREMENTS

ITEM	AIR VOIDS
RESURFACING	
HOT-MIX ASPHALT SURFACE COURSE, MIX "D", N50 (IL 9.5 mm), 1 1/2"	4% @ 50 Gyr
LEVELING BINDER (MACHINE METHOD), N50 (IL 9.5 mm), 3/4"	4% @ 50 Gyr
PATCHING	
CLASS D PATCHES (HMA BINDER IL-19mm); TYPE I-IV - 6 INCH	4% @ 70 Gyr
THE UNIT WEIGHT USED TO CALCULATE ALL HOT-MIX ASPHALT SURFACES IS 112 LBS/SQ YD/IN.	
FOR "AC TYPE" AND "PERCENT RAP" SEE DISTRICT ONE SPECIAL PROVISIONS.	

COPYRIGHT © 2008 BY BAXTER & WOODMAN, INC.
 STATE OF ILLINOIS - PROFESSIONAL DESIGN FIRM
 LICENSE NO. 184-00121 - EXPIRES 4/30/2011
 8/27/2009 3:55:53 PM
 \\c:\pub\woodman\projects\lapp\090356-09\090356-TYP.dwg
 \\c:\pub\woodman\projects\lapp\090356-09\090356-TYP.dwg



USER NAME * 566bed	DESIGNED - JCH	REVISED - IDOT REVIEW 6-29-09
FILE NAME * 090356-TYP.dwg	DRAWN - BCD	REVISED - IDOT REVIEW 8-13-09
PLOT DATE * 8/27/2009	CHECKED - NJP	REVISED -
	DATE - 4-30-09	REVISED -

**VILLAGE OF PLAINFIELD, ILLINOIS
FAU ROUTE 0405 DRAUDEN ROAD
(LAPP)IMPROVEMENTS**

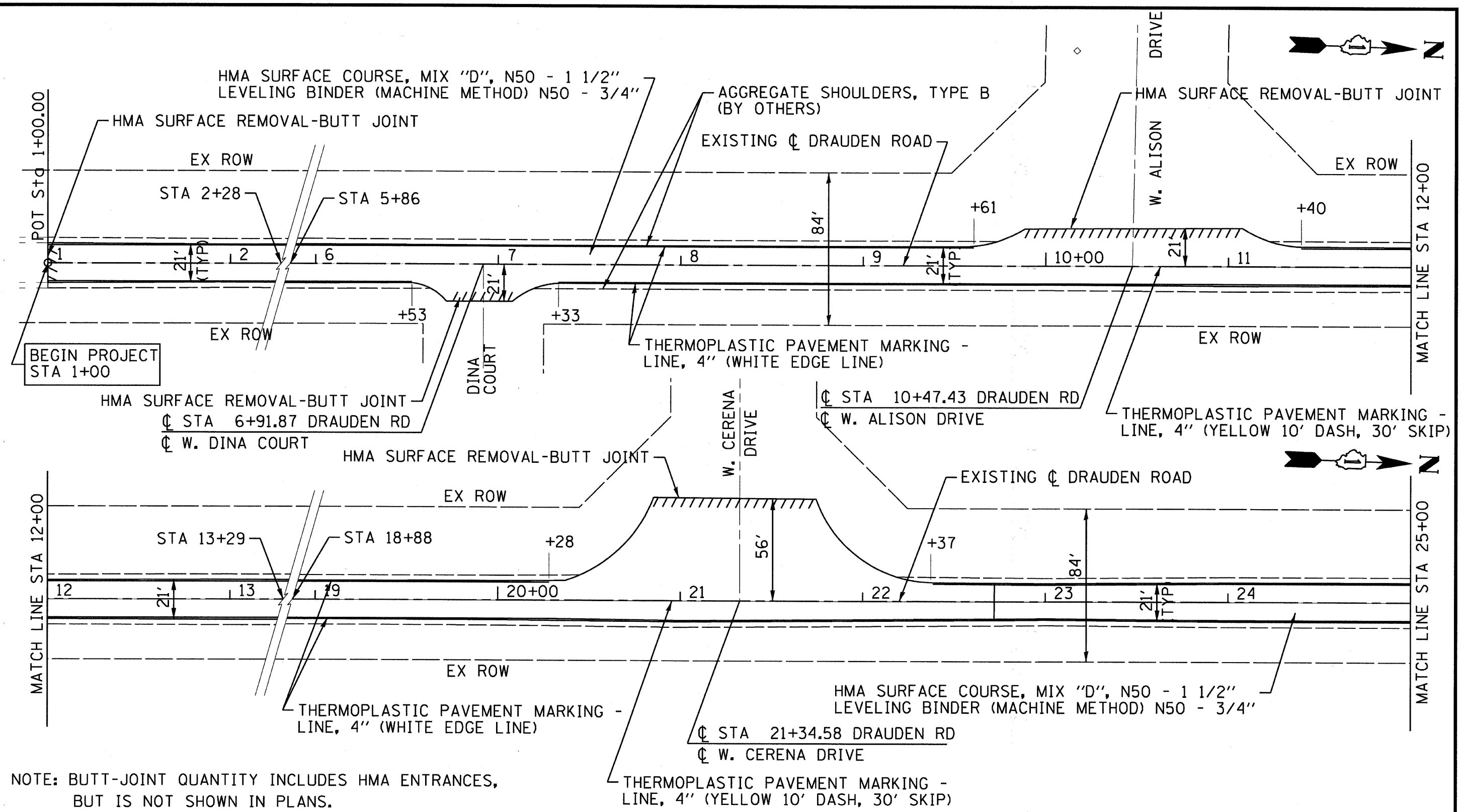
**TYPICAL SECTIONS AND
HMA MIXTURE REQUIREMENTS**

SCALE: NONE

STA. TO STA.

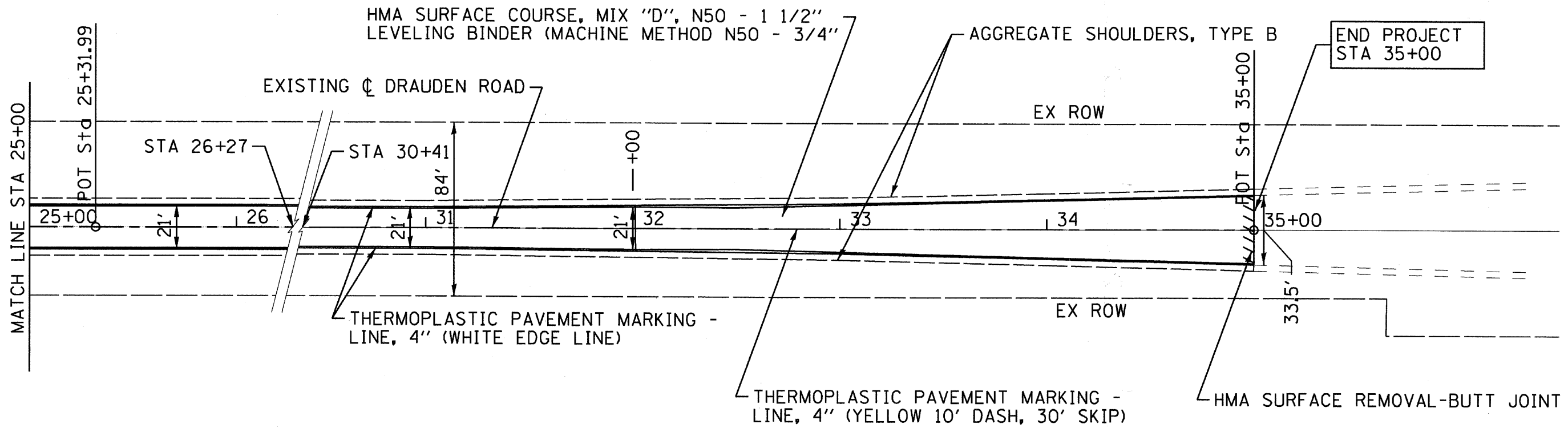
F.A. RTE.	SECTION	COUNTY	TOTAL SHEETS	SHEET NO.
* 09-00045-00-RS		WILL	11	4
FED. ROAD DIST. NO.	ILLINOIS	CONTRACT NO. 63227		
		FED. AID PROJECT		

COPYRIGHT © 2009, BY BAXTER & WOODMAN, INC.
 STATE OF ILLINOIS - PROFESSIONAL DESIGN FIRM
 LICENSE NO. - 184-00121 - EXPIRES 4/30/2011
 566bdc 8/19/2009 7:54:43 AM
 ...\\PDI\l7\low_res_for_E-mail\p1t
 ...\\CADD-SURVEY\PLOTS\B&W\F1
 ...\\corpbaxwood.com\projects\mokena\p1\090356-Dr-audrenLAPP\CADD-SURVEY\DRAWINGS\DGNS\090356-Plan01.sht



NOTE: BUTT-JOINT QUANTITY INCLUDES HMA ENTRANCES, BUT IS NOT SHOWN IN PLANS.

Baxter & Woodman Crystal Lake, Illinois 815.459.1200 Burlington, Wisconsin 262.782.7834 Mokena, Illinois 708.472.2090 DeKalb, Illinois 815.797.9111 Crystal Lake, Illinois 815.222.2088 Chicago, Illinois 312.572.0050 Plainfield, Illinois 815.609.7425	USER NAME = 566bdc FILE NAME = 090356-Plan01.sht PLOT DATE = 8/19/2009	DESIGNED - JGH DRAWN - BCD CHECKED - NJP DATE - 6-30-09	REVISED - IDOT REVIEW 6-29-09 REVISED - IDOT REVIEW 8-13-09 REVISED - REVISED -	VILLAGE OF PLAINFIELD, ILLINOIS FAU ROUTE 0405 DRAUDEN ROAD (LAPP)IMPROVEMENTS	RESURFACING PLAN SCALE: 1"=50' STA. TO STA.	F.A. RTE. SECTION COUNTY TOTAL SHEETS SHEET NO. 09-00045-00-RS WILL 11 5 FED. ROAD DIST. NO. CONTRACT NO. 63227 C-91-724-09 ILLINOIS FED. AID PROJECT ARA-9003-13831
--	--	--	--	---	--	---



END PROJECT
STA 35+00

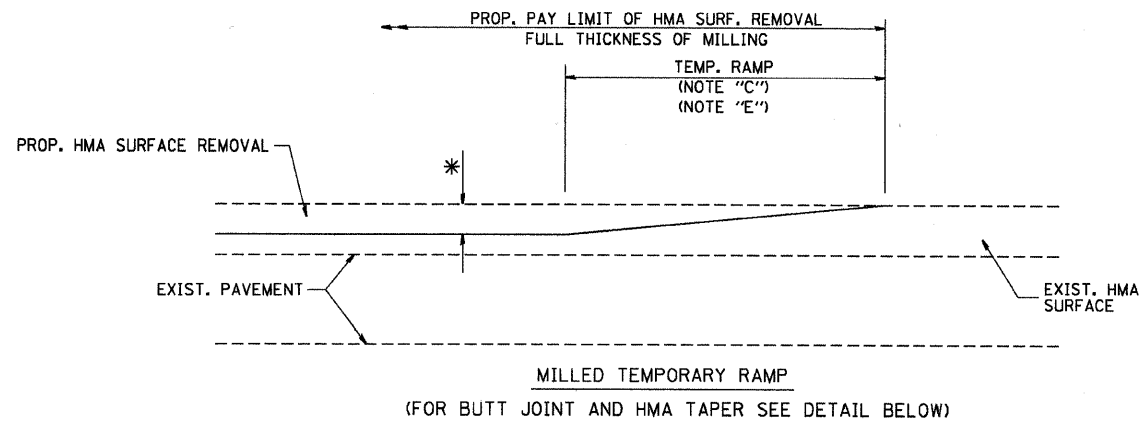
NOTE: BUTT-JOINT QUANTITY INCLUDES HMA ENTRANCES,
BUT IS NOT SHOWN IN PLANS.

COPYRIGHT © 2009, BY BAXTER & WOODMAN, INC.
 STATE OF ILLINOIS - PROFESSIONAL DESIGN FIRM
 LICENSE NO. - 184-00121 - EXPIRES 4/30/2011
 8/19/2009 7:54:34 AM
 ...\\PDF\17 (low res for E-mall).plt
 ...\\CADD-SURVEY\PL015\B&W.tbl
 ...\\corp-baxwood.com\projects\mokena\pfd\090356-Drauden\APP\CADD-SURVEY\DRAWINGS\DGNS\090356-Plan02.sht

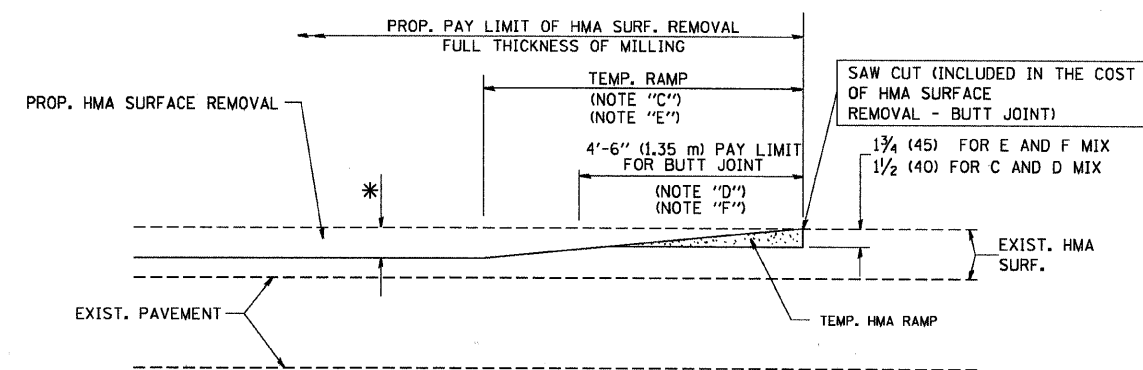
Baxter & Woodman Crystal Lake, Illinois 815.458.1200 Burlington, Wisconsin 262.753.7034 Mokena, Illinois 708.478.8090 Deerfield, Illinois 815.787.3111 Orland Park, Illinois 815.253.5088 Chicago, Illinois 312.578.9090 Plainfield, Illinois 815.628.7428	USER NAME = 566bed FILE NAME = 090356-Plan02.sht PLOT DATE = 8/19/2009	DESIGNED - JGH DRAWN - BCD CHECKED - NJP DATE - 6-30-09	REVISED - IDOT REVIEW 6-29-09 REVISED - IDOT REVIEW 8-13-09 REVISED - REVISED -	VILLAGE OF PLAINFIELD, ILLINOIS FAU ROUTE 0405 DRAUDEN ROAD (LAPP)IMPROVEMENTS	RESURFACING PLAN SCALE: 1"=50' STA. TO STA.	F.A. RTE. * SECTION 09-00045-00-RS COUNTY WILL TOTAL SHEETS 11 SHEET NO. 6 FED. ROAD DIST. NO. C-91-724-09 ILLINOIS CONTRACT NO. 63227 FED. AID PROJECT ARA-9003-C883
	NOTE: BUTT-JOINT QUANTITY INCLUDES HMA ENTRANCES, BUT IS NOT SHOWN IN PLANS.					

F.A.U. RTE.	SECTION	COUNTY	TOTAL SHEETS	SHEET NO.
* 09-00045-00-RS	WILL	ILLINOIS	11	7
STA.	TO STA.			
FED. ROAD DIST. NO.	ILLINOIS		FED AID PROJECT	

*FAU 0405 DRAUDEN ROAD
CONTRACT NO. 63227

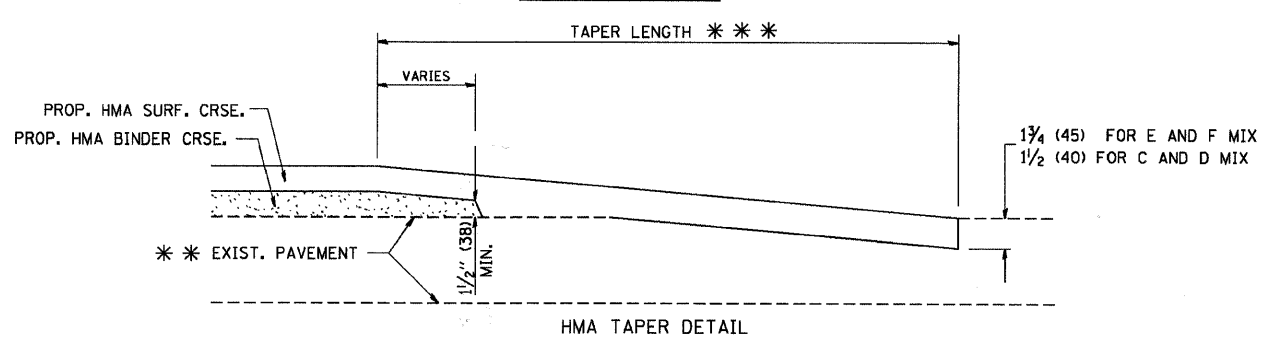
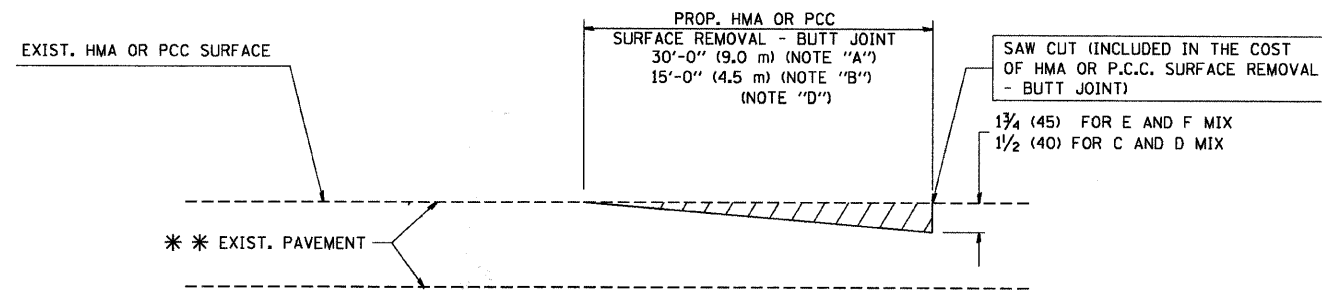


OPTION 1



OPTION 2

TYPICAL TEMPORARY RAMP



TYPICAL BUTT JOINT AND HMA TAPER FOR RESURFACING ONLY

*** PC CONCRETE, HMA OR HMA RESURFACED PAVEMENT.

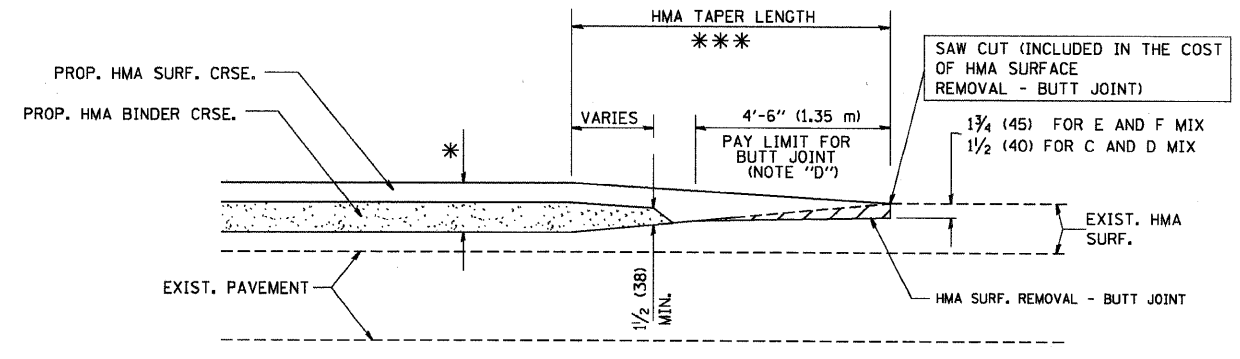
NOTES

- A: MAINLINE ROADWAYS AND MAJOR SIDE ROADS.
- B: MINOR SIDE ROADS.
- C: THE TEMP. RAMP SHALL BE CONSTRUCTED IMMEDIATELY UPON REMOVAL OF THE EXISTING HMA SURFACE.
- D: THE BUTT JOINT SHALL BE CONSTRUCTED IMMEDIATELY PRIOR TO PLACING THE PROPOSED HMA COURSES.
- E: TAPER THE TEMP. RAMP AT A RATE OF 3'-0" (900 mm) PER 1 INCH (25 mm) OF MILLING THICKNESS.
- F: INSTALLATION AND REMOVAL OF THE 4'-6" (1.35 m) TEMP. RAMP IS INCLUDED IN COST OF HMA SURFACE REMOVAL - BUTT JOINT
- G: SEE ARTICLE 406.08 AND 406.14 OF THE STANDARD SPECIFICATIONS FOR "HMA AND/OR PCC SURFACE REMOVAL, BUTT JOINT".
- * SEE TYPICAL SECTIONS FOR MILLING THICKNESS.
- *** 20'-0" (6.1 m) PER 1 (25) RESURFACING (NOTE "A")
10'-0" (3.0 m) PER 1 (25) RESURFACING (NOTE "B")

BASIS OF PAYMENT:

THE BUTT JOINT WILL BE PAID FOR AT THE CONTRACT UNIT PRICE PER SQUARE YARD (SQUARE METER) FOR "HOT-MIX ASPHALT SURFACE REMOVAL - BUTT JOINT" OR FOR "PORTLAND CEMENT CONCRETE SURFACE REMOVAL - BUTT JOINT".

ALL DIMENSIONS ARE IN INCHES (MILLIMETERS) UNLESS OTHERWISE SHOWN.



TYPICAL BUTT JOINT AND HMA TAPER FOR MILLING AND RESURFACING

FILE NAME = W:\distd\22x34\bd32.dgn	USER NAME = goglienobt	DESIGNED - M. DE YONG	REVISED - R. SHAH 10-25-94
		DRAWN -	REVISED - A. ABBAS 03-21-97
		CHECKED -	REVISED - M. GOMEZ 04-06-01
		DATE - 06-13-90	REVISED - R. BORO 01-01-07

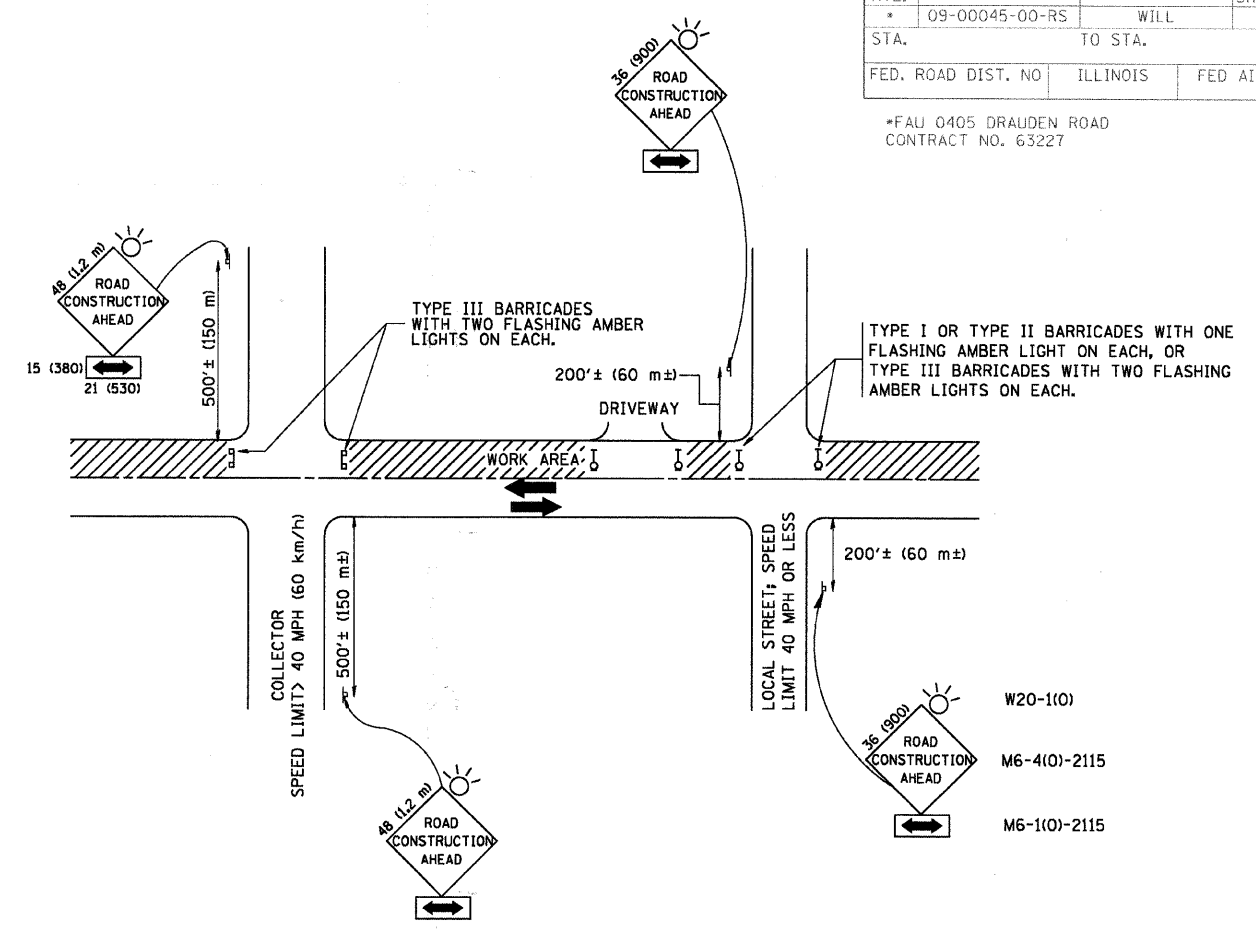
**STATE OF ILLINOIS
DEPARTMENT OF TRANSPORTATION**

BUTT JOINT AND HMA TAPER DETAILS	
SCALE: NONE	SHEET NO. 1 OF 1 SHEETS
STA.	TO STA.

F.A.U. RTE.	SECTION	COUNTY	TOTAL SHEETS	SHEET NO.
* 09-00045-00-RS	WILL	ILLINOIS	11	7
BD400-05 BD32		CONTRACT NO. 63227		
FED. ROAD DIST. NO. 1		ILLINOIS FED. AID PROJECT		

F.A.U. RTE.	SECTION	COUNTY	TOTAL SHEETS	SHEET NO.
* 09-00045-00-RS	WILL	ILLINOIS	11	8
STA.	TO STA.			
FED. ROAD DIST. NO.	ILLINOIS	FED AID PROJECT		

*FAU 0405 DRAUDEN ROAD
CONTRACT NO. 63227



TRAFFIC CONTROL AND PROTECTION FOR SIDE ROADS, INTERSECTIONS, AND DRIVEWAYS

NOTES:

- A. FOR NO LANE RESTRICTION ON THE SIDE ROAD OR DRIVEWAYS**
- SIDE ROAD WITH A SPEED LIMIT OF 40 MPH (60 km/h) OR LESS AS SHOWN ON THE DRAWING AND AS DIRECTED BY THE ENGINEER:
 - ONE ROAD CONSTRUCTION AHEAD SIGN 36 x 36 (900x900) WITH A FLASHER AND FLAG MOUNTED ON IT APPROXIMATELY 200' (60 m) IN ADVANCE OF THE MAIN ROUTE.
 - THE CLOSED PORTION OF THE MAIN ROUTE SHALL BE PROTECTED BY BLOCKING WITH TYPE I, TYPE II OR TYPE III BARRICADES, 1/3 OF THE CROSS SECTION OF THE CLOSED PORTION.
 - SIDE ROAD WITH A SPEED LIMIT GREATER THAN 40 MPH (60 km/h) AS SHOWN ON THE DRAWING AND AS DIRECTED BY THE ENGINEER:
 - ONE ROAD CONSTRUCTION AHEAD SIGN 48 x 48 (1.2 m x 1.2 m) WITH A FLASHER MOUNTED ON IT APPROXIMATELY 500' (150 m) IN ADVANCE OF THE MAIN ROUTE.
 - THE CLOSED PORTION OF THE MAIN ROUTE SHALL BE PROTECTED BY BLOCKING WITH TYPE III BARRICADES, 1/2 OF THE CROSS SECTION OF THE CLOSED PORTION.
 - WHEN THE SIDE ROAD LIES BETWEEN THE BEGINNING OF THE MAINLINE SIGNING AND THE WORK ZONE, A SINGLE HEADED ARROW (M6-1) SHALL BE USED IN LIEU OF THE DOUBLE HEADED ARROW (M6-4).
- B. FOR A LANE CLOSURE ON A SIDE ROAD OR DRIVEWAY:**
USE APPLICABLE PORTIONS OF THE TYPICAL APPLICATION OF TRAFFIC CONTROL DEVICES (STD. 701501, STD. 701606 OR THE APPROPRIATE STANDARD). THE SPACING OF SIGNS AND BARRICADES SHALL BE ADJUSTED FOR FIELD CONDITIONS AS DIRECTED BY THE ENGINEER. THE DIRECTIONAL ARROW SHALL BE COVERED OR REMOVED WHEN NO LONGER CONSISTENT WITH THE SIDE ROAD LANE CLOSURE.
- C. ADVANCE WARNING SIGNS ARE TO BE OMITTED ON DRIVEWAY UNLESS OTHERWISE NOTED.**
- D. THE TRAFFIC CONTROL AND PROTECTION FOR SIDE ROADS, INTERSECTIONS, AND DRIVEWAYS SHALL BE INCIDENTAL TO THE COST OF SPECIFIED TRAFFIC CONTROL STANDARDS OR ITEMS.**

All dimensions are in millimeters (inches) unless otherwise shown.

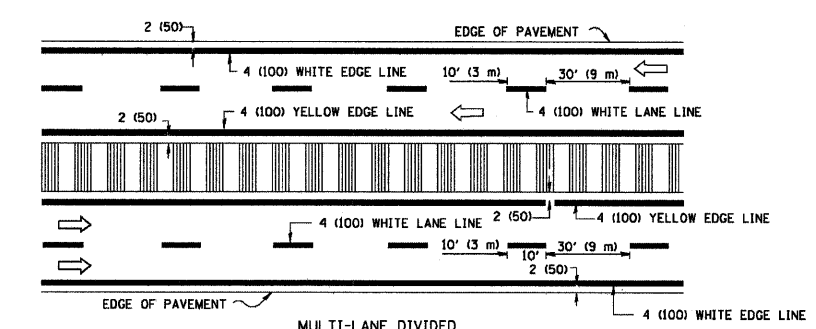
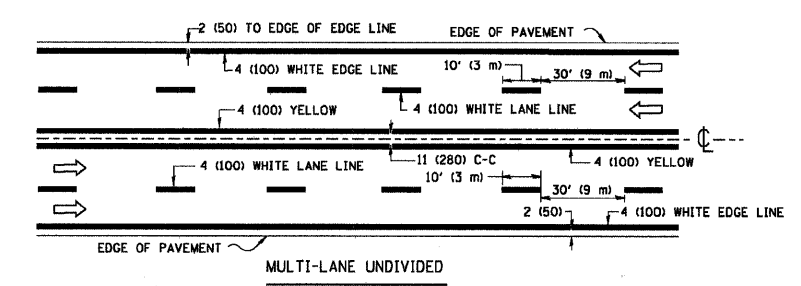
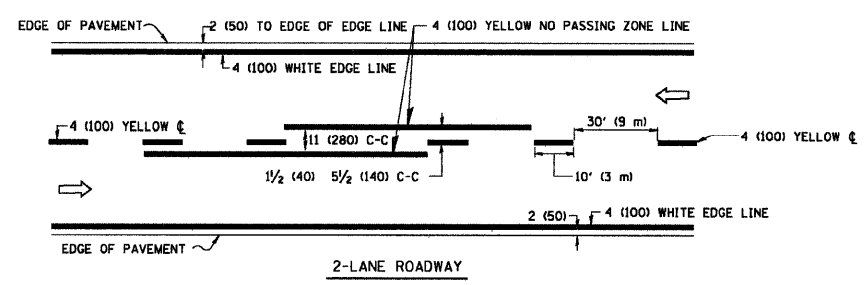
FILE NAME = W:\distratd\22x34\1018.dgn	USER NAME = geglienobt	DESIGNED - LHA	REVISED - J. OBERLE 10-18-95
		DRAWN -	REVISED - A. HOUSEH 03-06-96
		CHECKED -	REVISED - A. HOUSEH 10-15-96
		DATE - 06-89	REVISED - T. RAMMACHER 01-06-00

**STATE OF ILLINOIS
DEPARTMENT OF TRANSPORTATION**

**TRAFFIC CONTROL AND PROTECTION FOR
SIDE ROADS, INTERSECTIONS, AND DRIVEWAYS**

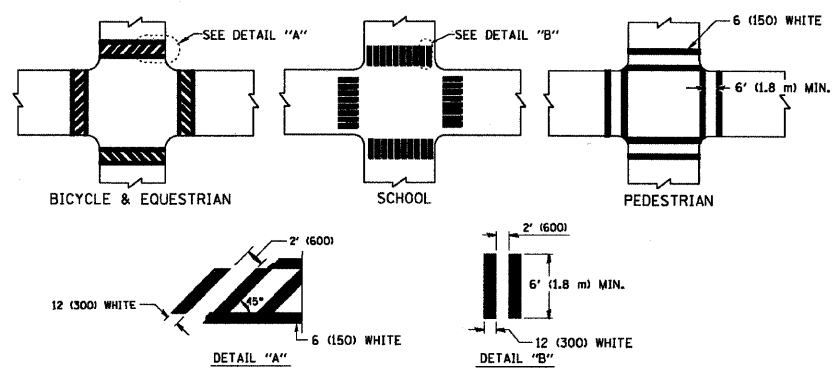
SCALE: NONE SHEET NO. 1 OF 1 SHEETS STA. TO STA.

F.A.U. RTE.	SECTION	COUNTY	TOTAL SHEETS	SHEET NO.
* 09-00045-00-RS	WILL	ILLINOIS	11	8
TC-10			CONTRACT NO. 63227	
FED. ROAD DIST. NO. 1 (ILLINOIS) FED. AID PROJECT				

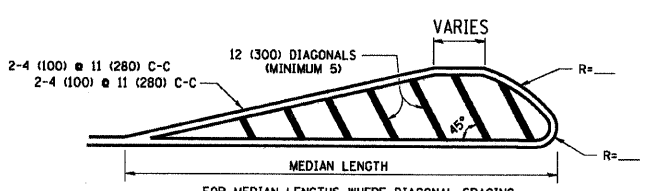
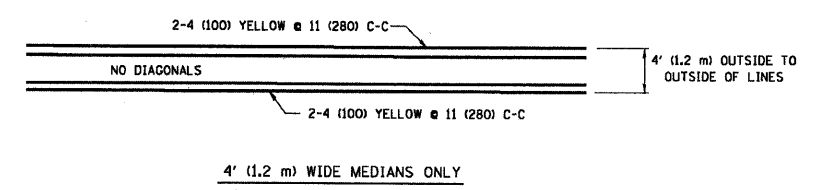


NOTE: MEDIANS WITH BARRIER CURB DO NOT REQUIRE AN EDGE LINE

TYPICAL LANE AND EDGE LINE MARKING

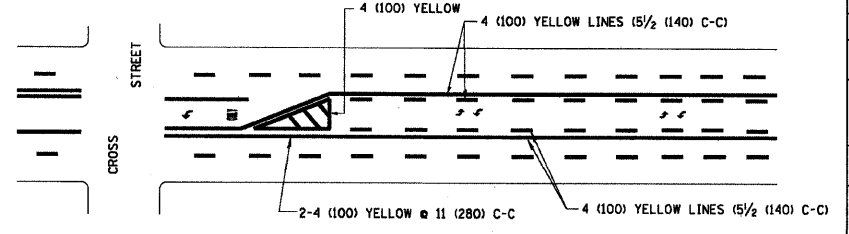


TYPICAL CROSSWALK MARKING

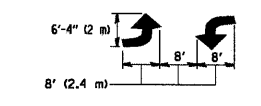


FOR MEDIAN LENGTHS WHERE DIAGONAL SPACING CANNOT BE ATTAINED, USE 5 (FIVE) EQUALLY SPACED DIAGONAL LINES.
 DIAGONAL LINE SPACING: 50' (15 m) C-C (LESS THAN 30MPH (50 km/h))
 75' (25 m) C-C 30MPH (50 km/h) TO 45MPH (70 km/h)
 150' (45 m) C-C (MORE THAN 45MPH (70 km/h))

MEDIANS OVER 4' (1.2 m) WIDE

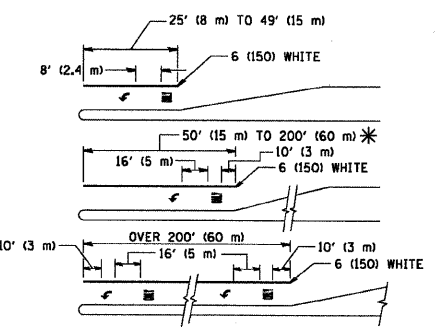


A MINIMUM OF TWO PAIRS OF TURN ARROWS SHALL BE USED, WHITE IN COLOR. ADDITIONAL PAIRS SHALL BE PLACED AT 200' (60 m) TO 300' (90 m) INTERVALS.



MEDIAN WITH TWO-WAY LEFT TURN LANE

TYPICAL PAINTED MEDIAN MARKING

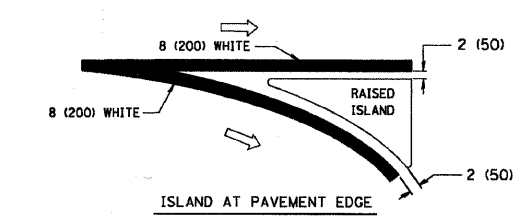
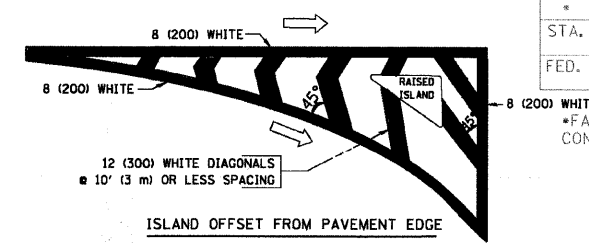


FULL SIZE LETTERS 8' (2.4 m) AND ARROWS SHALL BE USED. AREA = 15.6 SQ. FT. (1.5 m²) ONLY AREA = 20.8 SQ. FT. (1.9 m²)

* TURN LANES IN EXCESS OF 400' (120 m) IN LENGTH MAY HAVE AN ADDITIONAL SET OF ARROW - "ONLY" INSTALLED MIDWAY BETWEEN THE OTHER TWO SETS OF ARROW - "ONLY".

TYPICAL LEFT (OR RIGHT) TURN LANE

TYPICAL TURN LANE MARKING



TYPICAL ISLAND MARKING

TYPE OF MARKING	WIDTH OF LINE	PATTERN	COLOR	SPACING / REMARKS
CENTERLINE ON 2 LANE PAVEMENT	4 (100)	SKIP-DASH	YELLOW	10' (3 m) LINE WITH 30' (9 m) SPACE
CENTERLINE ON MULTI-LANE UNDIVIDED PAVEMENT	2 @ 4 (100)	SOLID	YELLOW	11 (280) C-C
NO PASSING ZONE LINES FOR ONE DIRECTION FOR BOTH DIRECTIONS	4 (100) 2 @ 4 (100)	SOLID SOLID	YELLOW YELLOW	5/2 (140) C-C FROM SKIP-DASH CENTERLINE 11 (280) C-C OMIT SKIP-DASH CENTERLINE BETWEEN
LANE LINES	4 (100) 5 (125) ON FREEWAYS	SKIP-DASH SKIP-DASH	WHITE WHITE	10' (3 m) LINE WITH 30' (9 m) SPACE
DOTTED LINES (EXTENSIONS OF CENTER, LANE OR TURN LANE MARKINGS)	SAME AS LINE BEING EXTENDED	SKIP-DASH	SAME AS LINE BEING EXTENDED	2' (600) LINE WITH 6' (1.8 m) SPACE
EDGE LINES	4 (100)	SOLID	YELLOW-LEFT WHITE-RIGHT	OUTLINE MOUNTABLE MEDIANS IN YELLOW; EDGE LINES ARE NOT USED NEXT TO BARRIER CURB
TURN LANE MARKINGS	6 (150) LINE; FULL SIZE LETTERS & SYMBOLS (8' (2.4m))	SOLID	WHITE	SEE TYPICAL TURN LANE MARKING DETAIL
TWO WAY LEFT TURN MARKING	2 @ 4 (100) EACH DIRECTION 8' (2.4m) LEFT ARROW	SKIP-DASH AND SOLID IN PAIRS	YELLOW WHITE	10' (3 m) LINE WITH 30' (9 m) SPACE FOR SKIP-DASH; 5/2 (140) C-C BETWEEN SOLID LINE AND SKIP-DASH LINE SEE TYPICAL TWO-WAY LEFT TURN MARKING DETAIL
CROSSWALK LINES (PEDESTRIAN) A. DIAGONALS (BIKE & EQUESTRIAN) B. LONGITUDINAL BARS (SCHOOL)	2 @ 6 (150) 2' (600) APART 2' (600) APART	SOLID SOLID SOLID	WHITE WHITE WHITE	NOT LESS THAN 6' (1.8 m) APART SEE TYPICAL CROSSWALK MARKING DETAILS.
STOP LINES	24 (600)	SOLID	WHITE	PLACE 4' (1.2 m) IN ADVANCE OF AND PARALLEL TO CROSSWALK, IF PRESENT. OTHERWISE, PLACE AT DESIRED STOPPING POINT. PARALLEL TO CROSSROAD CENTERLINE, WHERE POSSIBLE
PAINTED MEDIANS	2 @ 4 (100) WITH 12 (300) DIAGONALS @ 45° NO DIAGONALS USED FOR 4' (1.2 m) WIDE MEDIANS	SOLID	YELLOW; TWO WAY TRAFFIC WHITE; ONE WAY TRAFFIC	11 (280) C-C FOR THE DOUBLE LINE SEE TYPICAL PAINTED MEDIAN MARKING.
GORE MARKING AND CHANNELIZING LINES	8 (200) WITH 12 (300) DIAGONALS @ 45°	SOLID	WHITE	DIAGONALS: 15' (4.5 m) C-C (LESS THAN 30MPH (50 km/h)) 20' (6 m) C-C 30MPH (50 km/h) TO 45MPH (70 km/h) 30' (9 m) C-C (OVER 45MPH (70 km/h))
RAILROAD CROSSING	24 (600) TRANSVERSE LINES; "RR" 15' (4.5 m) LETTERS; 16 (400) LINE FOR "X"	SOLID	WHITE	SEE STATE STANDARD 780001 AREA OF: "R"-3.6 SQ. FT. (0.33 m ²) EACH "X"-54.0 SQ. FT. (5.0 m ²)
SHOULDER DIAGONALS	12 (300) @ 45°	SOLID	WHITE - RIGHT YELLOW - LEFT	50' (15 m) C-C (LESS THAN 30MPH (50 km/h)) 75' (25 m) C-C (30 MPH (50 km/h) TO 45MPH (70 km/h)) 150' (45 m) C-C (OVER 45MPH (70 km/h))

FOR FURTHER DETAILS ON PAVEMENT MARKING REFER TO STANDARD SPECIFICATIONS FOR ROAD AND BRIDGE CONSTRUCTION AND STATE STANDARD 780001.

All dimensions are in inches (millimeters) unless otherwise shown.

FILE NAME =	USER NAME = goglianobt	DESIGNED - EVERS	REVISED - T. RAMMACHER 10-27-94
W:\distatd\22x34\1013.dgn		DRAWN -	REVISED - A. HOUSEH 10-09-96
		CHECKED -	REVISED - A. HOUSEH 10-17-96
		DATE - 03-19-90	REVISED - T. RAMMACHER 01-06-00

STATE OF ILLINOIS
DEPARTMENT OF TRANSPORTATION

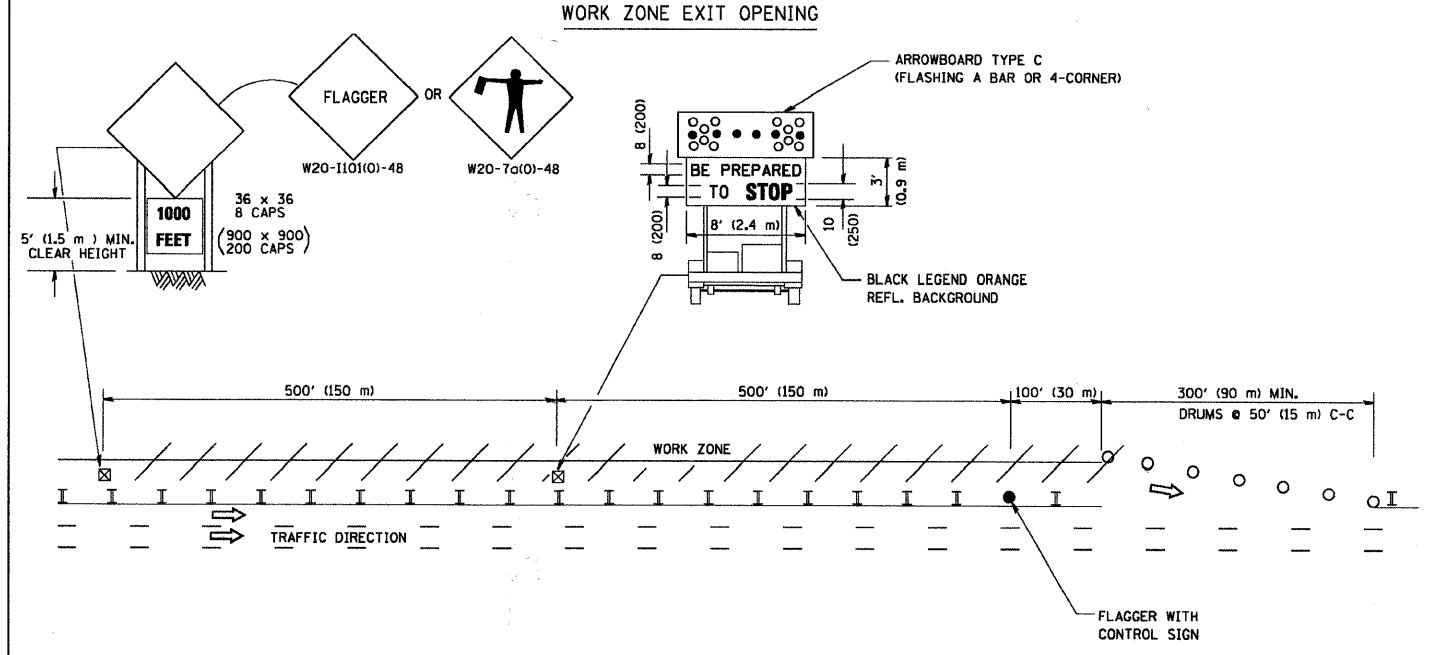
DISTRICT ONE	
TYPICAL PAVEMENT MARKINGS	
SCALE: NONE	SHEET NO. 1 OF 1 SHEETS
STA.	TO STA.

F.A. RTE.	SECTION	COUNTY	TOTAL SHEETS	SHEET NO.
* 09-00045-00-RS	WILL	ILLINOIS	11	9
TC-13		CONTRACT NO. 63227		
FED. ROAD DIST. NO. 1 ILLINOIS FED. AID PROJECT				

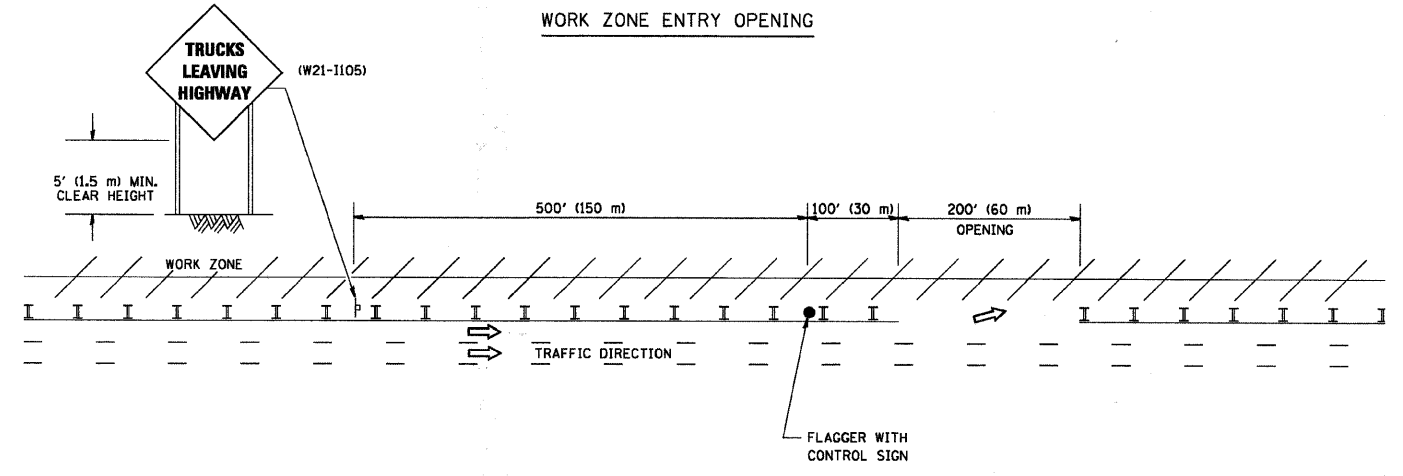
F.A.U. RTE.	SECTION	COUNTY	TOTAL SHEETS	SHEET NO.
*	09-00045-00-RS	WILL	11	10
STA.	TO STA.			
FED. ROAD DIST. NO.	ILLINOIS	FED AID PROJECT		

*FAU 0405 DRAUDEN ROAD
CONTRACT NO. 63227

SIGNING FOR FLAGGING OPERATIONS AT WORK ZONE OPENINGS



WORK ZONE ENTRY OPENING



NOTES:

1. The Arrowboard, the Flagger Ahead trailer mounted sign, and the Trucks Leaving Highway sign shall be removed or turned away from traffic and the exit and entry openings shall be closed when the flagging operation ceases.
2. Work Zone Exit Openings should be a minimum of one half mile apart.
3. Exiting the work zone at any place other than at a Work Zone Exit Opening will be prohibited.
4. All vehicles shall enter the work zone at entry openings, using their turn signals to warn motorists.

ALL DIMENSIONS ARE IN INCHES (MILLIMETERS) UNLESS OTHERWISE SHOWN

COPYRIGHT © 2008 BY BAXTER & WOODMAN, INC.
 STATE OF ILLINOIS - PROFESSIONAL DESIGN FIRM
 1111 N. WOODSTOCK AVENUE
 DEPARTMENT OF TRANSPORTATION
 SPRINGFIELD, ILLINOIS 62762

FILE NAME = BAXTER	USER NAME = geglanoht	DESIGNED -	REVISED - D.W.S. 08-98
W:\distata\2008		DRAWN -	REVISED - J.A.F. 04-03
		CHECKED -	REVISED - J.A.F. 02-06
		DATE -	REVISED - S.P.B. 01-07

**STATE OF ILLINOIS
DEPARTMENT OF TRANSPORTATION**

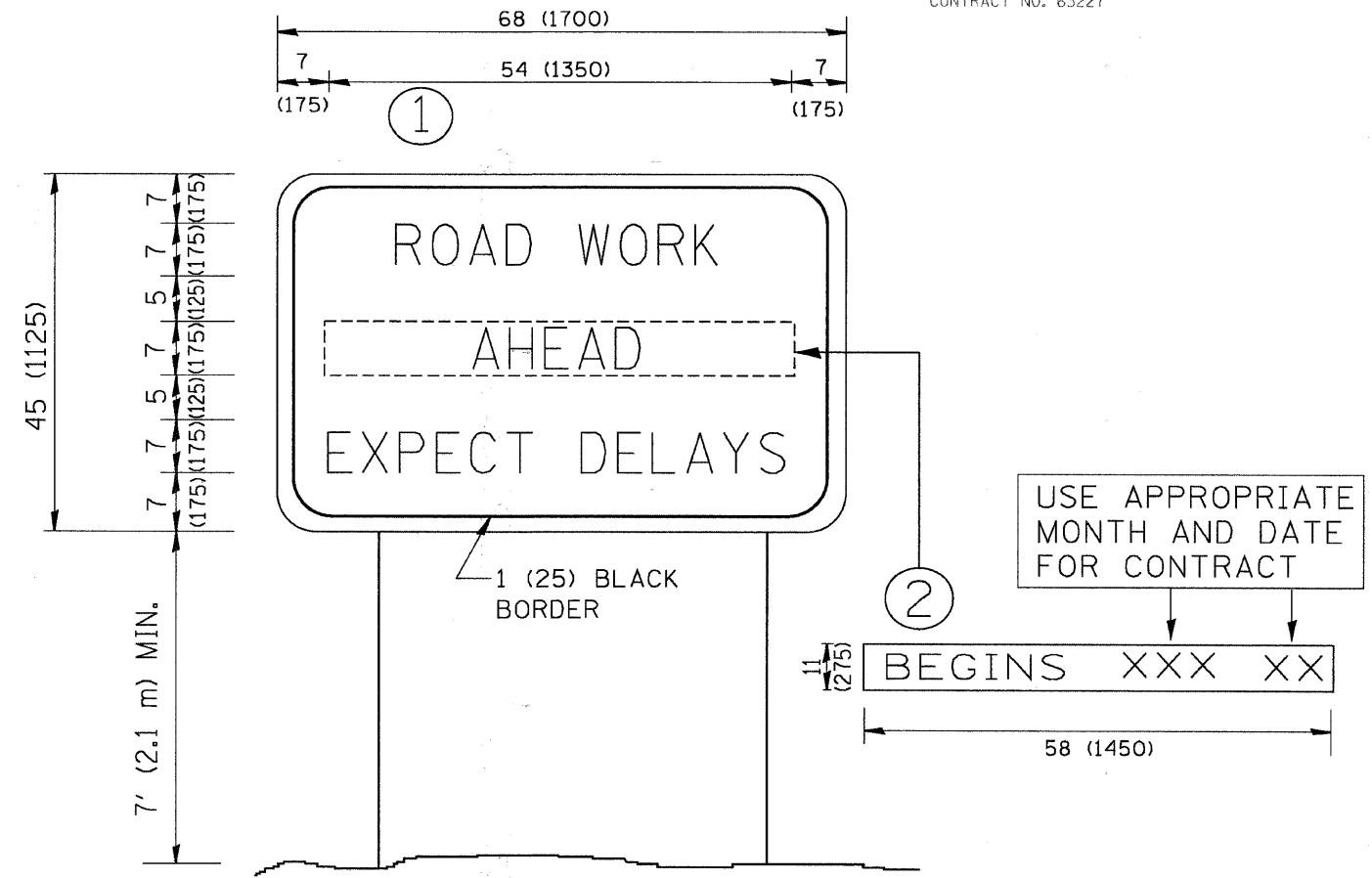
**SIGNING FOR FLAGGING OPERATIONS
AT WORK ZONE OPENINGS**

F.A.U. RTE.	SECTION	COUNTY	TOTAL SHEETS	SHEET NO.
*	09-00045-00-RS	WILL	11	10
TC-18		CONTRACT NO. 63227		
FED. ROAD DIST. NO. 1 ILLINOIS FED. AID PROJECT				

SCALE: NONE SHEET NO. 1 OF 1 SHEETS STA. TO STA.

F.A.U. RTE.	SECTION	COUNTY	TOTAL SHEETS	SHEET NO.
* 09-00045-00-RS	WILL		11	11
STA.	TO STA.			
FED. ROAD DIST. NO.	ILLINOIS	FED AID PROJECT		

*FAU 0405 DRAUDEN ROAD
CONTRACT NO. 63227



NOTES:

1. USE BLACK LETTERING ON ORANGE BACKGROUND.
2. ERECT SIGNS IN ADVANCE OF THE LOCATION FOR THE "ROAD CONSTRUCTION AHEAD" SIGN AT LOCATIONS AS DIRECTED BY THE ENGINEER.
3. ERECT SIGN ① WITH INSTALLED PANEL ② ONE WEEK PRIOR TO THE START OF CONSTRUCTION.
4. REMOVE PANEL ② SOON AFTER THE START OF CONSTRUCTION.
5. SEE SPECIAL PROVISION FOR "TEMPORARY INFORMATION SIGNING" FOR ADDITIONAL INFORMATION.
6. ONE SIGN ASSEMBLY EQUALS 25.70 SQ. FT. (2.3 SQ. M.)
7. SHALL BE PAID FOR AS TEMPORARY INFORMATION SIGNING.

ALL DIMENSIONS ARE IN INCHES (MILLIMETERS)
UNLESS OTHERWISE SHOWN.

FILE NAME = W:\diststd\22x34\to22.dgn	USER NAME = gaglienobt	DESIGNED -	REVISED - R. MIRS 09-15-97	STATE OF ILLINOIS DEPARTMENT OF TRANSPORTATION	ARTERIAL ROAD INFORMATION SIGN	F.A.U. RTE.	SECTION	COUNTY	TOTAL SHEETS	SHEET NO.
	DRAWN -	REVISED - R. MIRS 12-11-97	* 09-00045-00-RS			WILL	11	11		
	PLOT SCALE = 50,000' / IN.	CHECKED -	REVISED - T. RAMMACHER 02-02-99			TC-22		CONTRACT NO. 63227		
	PLOT DATE = 1/4/2008	DATE -	REVISED - C. JUCCIUS 01-31-07			FED. ROAD DIST. NO. 1 ILLINOIS FED. AID PROJECT				
					SCALE: NONE	SHEET NO. 1 OF 1 SHEETS		STA.	TO STA.	