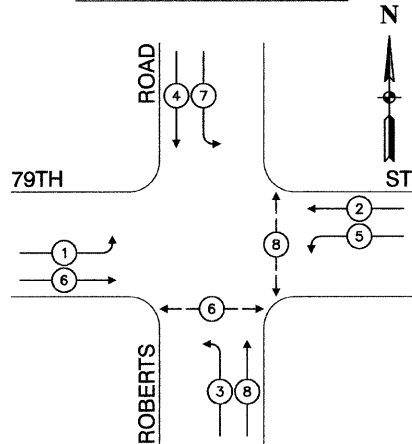
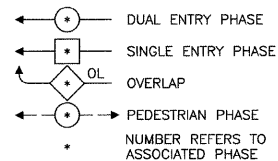


**CONTROLLER SEQUENCE**



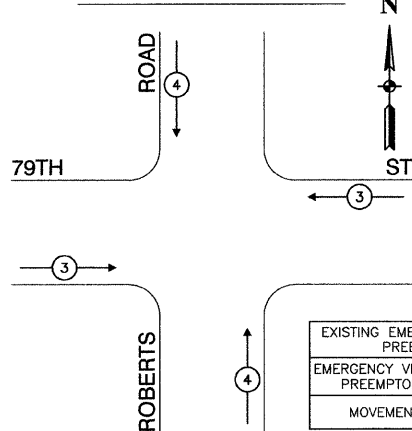
**LEGEND**



**PHASE DESIGNATION DIAGRAM**

PUSH BUTTON "C" SHALL PLACE A CALL IN PHASE 6 AND 8

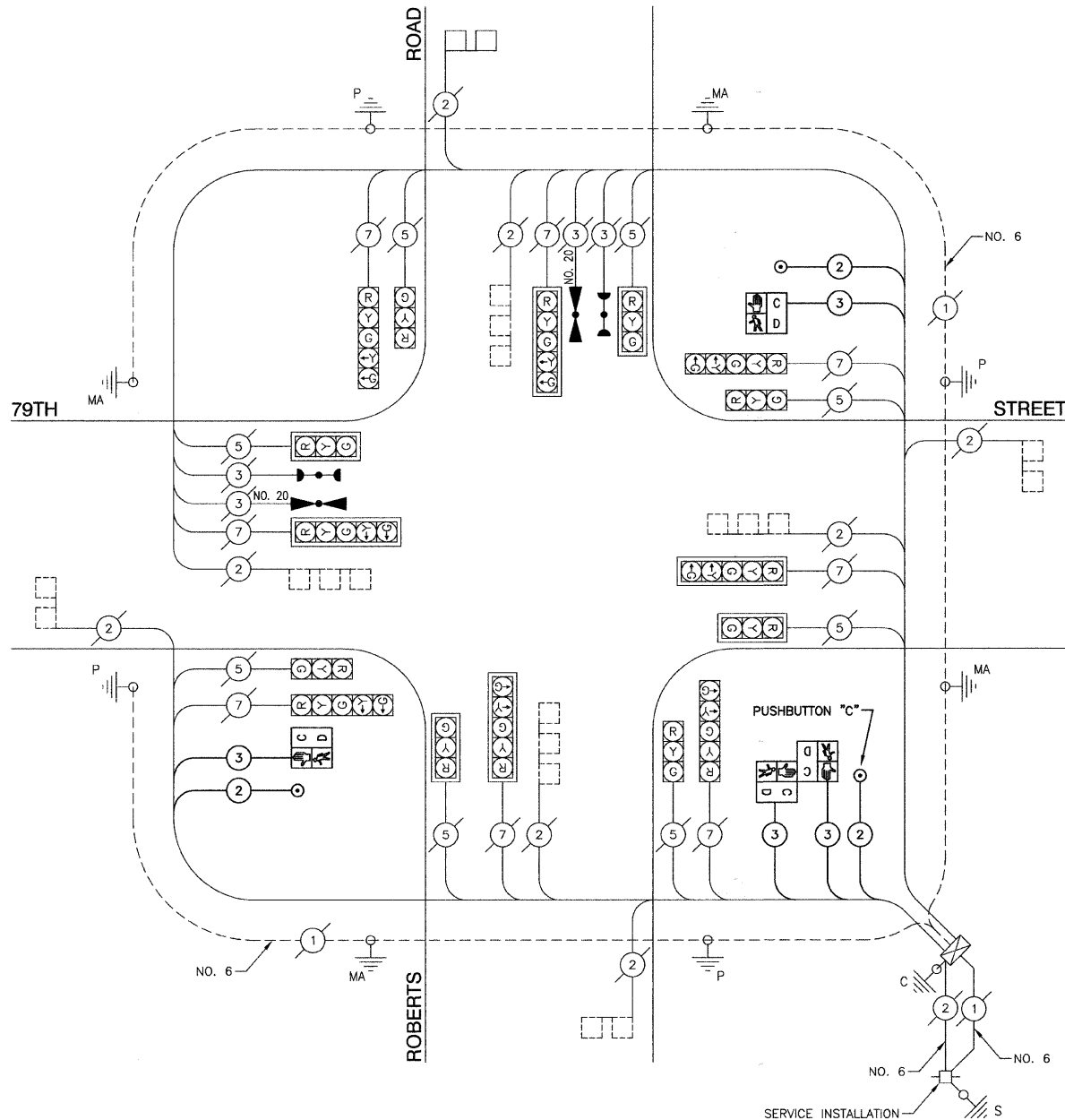
**EXISTING EMERGENCY VEHICLE PREEMPTION SEQUENCE**



EXISTING EMERGENCY VEHICLE PREEMPTORS			
EMERGENCY VEHICLE PREEMPTORS	3	4	MOVEMENT
	←	←	←
	→	→	→

I.D.O.T. TRAFFIC SIGNAL INSTALLATION ELECTRICAL SERVICE REQUIREMENTS					TOTAL WATTAGE
TYPE	NO. LAMPS	WATTAGE INCAND.	LED	% OPERATION	
SIGNAL (RED)	16	135		0.50	1080
(YELLOW)	16	135		0.25	540
(GREEN)	16	135		0.25	540
ARROW	16	135		0.10	216
PED. SIGNAL	3		25	1.00	75
CONTROLLER	1	100		1.00	100
ILLUM. SIGN					
FLASHER				0.50	
TOTAL =					2551

FOUNDATION (DEPTH)	FT. (m)	CABLE SLACK	FT. (m)	VERTICAL	FT. (m)
TYPE A - POST	4 (1.2)	HANDHOLE	6.5 (2.0)	ALL FOUNDATIONS	3.5 (1.0)
D - CONTROLLER	4 (1.2)	DOUBLE HANDHOLE	13 (4.0)	MAST ARM (L) POLE	20'+L-2= (8m+L-0.6m)
E - M. ARM POLE		SIGNAL POST	2 (1.0)		
24" (600mm)	10 (3.0)	CONTROLLER CAB.	1 (0.5)	BRACKET MOUNTED	13 (4.0)
30" (750mm)	15 (4.6)	FIBER OPTIC	13 (4.0)	PED. PUSHBUTTON	4 (1.2)
		ELECTRIC SERVICE	1 (0.5)	ELECTRIC SERVICE	13.5 (4.1)
		GROUND CABLE	1 (0.5)	SERVICE TO GROUND	13.5 (4.1)
				POST MOUNTED	6 (1.8)



**CABLE PLAN**  
NOT TO SCALE

**SCHEDULE OF QUANTITIES**

ITEM	UNIT	QUAN
MAINTENANCE OF EXISTING TRAFFIC SIGNAL INSTALLATION	EACH	1
MODIFY EXISTING TRAFFIC SIGNAL CABINET	EACH	1
ELECTRIC CABLE IN CONDUIT, SIGNAL, NO. 14 2C	FOOT	382
ELECTRIC CABLE IN CONDUIT, SIGNAL, NO. 14 3C	FOOT	435
PEDESTRIAN SIGNAL HEAD, LED, 2-FACE, WITH COUNTDOWN TIMERS	EACH	1
PEDESTRIAN SIGNAL HEAD, LED, 1-FACE, WITH COUNTDOWN TIMERS	EACH	2
PEDESTRIAN PUSH BUTTON	EACH	3

EXISTING	PROPOSED	DESCRIPTION
[Symbol]	[Symbol]	8" TRAFFIC SIGNAL SECTION
[Symbol]	[Symbol]	12" TRAFFIC SIGNAL SECTION
[Symbol]	[Symbol]	12" PEDESTRIAN SIGNAL SECTION
[Symbol]	[Symbol]	12" PEDESTRIAN SIGNAL SECTION WITH COUNTDOWN TIMER
[Symbol]	[Symbol]	CONTROLLER CABINET
[Symbol]	[Symbol]	UNINTERRUPTIBLE POWER SUPPLY
[Symbol]	[Symbol]	SERVICE INSTALLATION
[Symbol]	[Symbol]	TELEPHONE CONNECTION
[Symbol]	[Symbol]	MAGNETIC DETECTOR
[Symbol]	[Symbol]	EMERGENCY VEHICLE LIGHT DETECTOR
[Symbol]	[Symbol]	CONFIRMATION BEACON
[Symbol]	[Symbol]	PUSHBUTTON DETECTOR
[Symbol]	[Symbol]	VEHICLE DETECTOR, INDUCTION LOOP
[Symbol]	[Symbol]	DENOTES NUMBER OF CONDUCTORS. ALL CABLE NO. 14 EXCEPT AS INDICATED. ALL LOOP DETECTOR CABLE TO BE SHIELDED.
[Symbol]	[Symbol]	SIGNAL FACE WITH BACKPLATE
[Symbol]	[Symbol]	"P" INDICATES PROGRAMMED HEAD
[Symbol]	[Symbol]	RAILROAD CONTROL CABINET
[Symbol]	[Symbol]	ILLUMINATED SIGN, FIBER OPTIC "NO LEFT TURN"
[Symbol]	[Symbol]	ILLUMINATED SIGN, FIBER OPTIC "NO RIGHT TURN"
[Symbol]	[Symbol]	H/C GROUND ROD AT HANDHOLE, DOUBLE HANDHOLE, OR CONTROLLER
[Symbol]	[Symbol]	P GROUND ROD AT POST OR MAST ARM POLE
[Symbol]	[Symbol]	S GROUND ROD AT ELECTRIC SERVICE INSTALLATION
[Symbol]	[Symbol]	GROUND CABLE IN CONDUIT NO. 6 SOLID COPPER (GREEN)
[Symbol]	[Symbol]	FIBER OPTIC CABLE IN CONDUIT NO. 62.5/125 2-MM12F & SM12F

**NOTE:**  
THE PURPOSE OF THIS PLAN IS FOR THE ADDITION OF PEDESTRIAN TRAFFIC SIGNALS. ALL OTHER EQUIPMENT IS EXISTING.