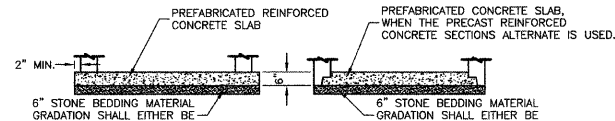


- NOTES:
1. CONCENTRIC CONE REQUIRED (VALVE TO ALIGN W/ CENTER OF FRAME OPENING).
 2. USE 4'-0" FOR WATER MAIN SIZES 8" AND UNDER. 5'-0" FOR SIZES 10" AND ABOVE.
 3. VALVE VAULT TO CONFORM TO ASTM C-478.
 4. ALL VALVES SHALL BE EAST JORDAN IRON WORKS RESILIENT SEATED GATE VALVES.
 5. ALL VALVES SHALL OPEN COUNTER CLOCKWISE AND CLOSE CLOCKWISE WITH NON-RISING STEM.
 6. PROVIDE CA-6 AGGREGATE BACKFILL MATERIAL AROUND VAULT TO SUB-GRADE ELEVATION; IN PAVED AREAS.

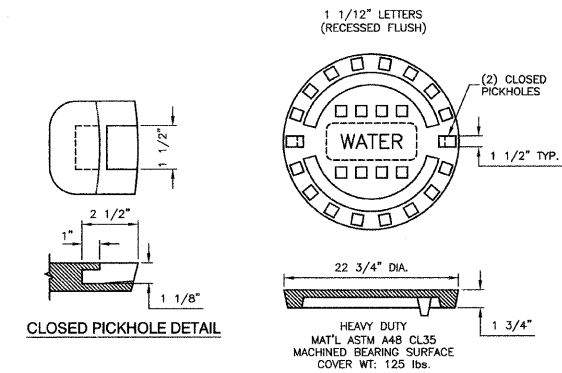
ALTERNATE MATERIALS FOR WALLS	D	C	T
PRECAST REINFORCED CONCRETE SECTION	4'-0"	2'-6"	4'-0"
CAST-IN-PLACE CONCRETE	5'-0"	3'-9"	5'-0"

* DIMENSION "C" FOR PRECAST REINFORCED CONCRETE SECTION MAY VARY FROM THE DIMENSION GIVEN ±6"

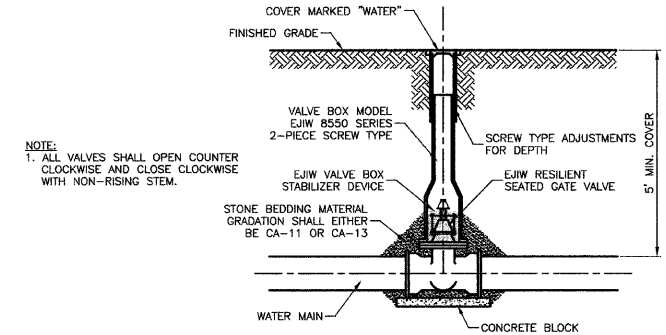


ALTERNATE BOTTOM SLAB

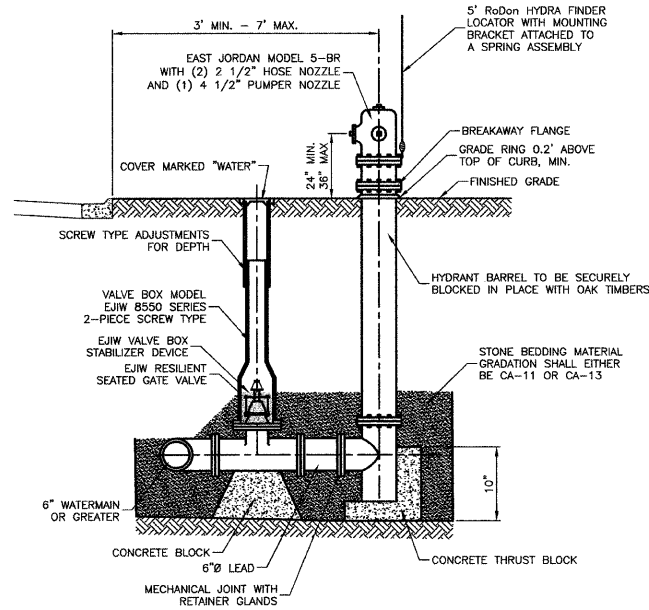
VALVE IN VAULT DETAIL



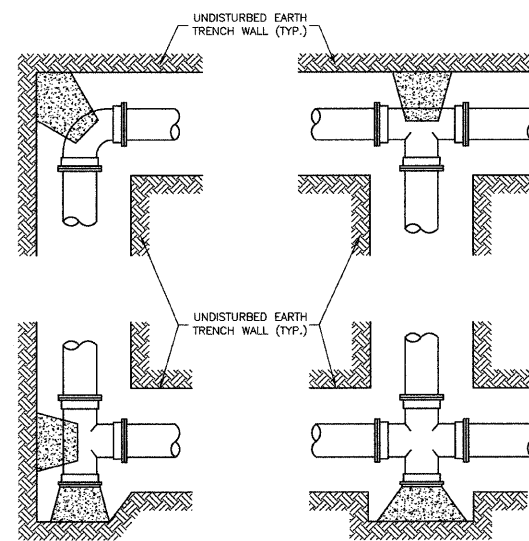
SPECIAL LETTERED WATER VALVE VAULT LID



TYPICAL VALVE IN BOX INSTALLATION

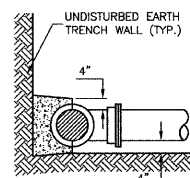


FIRE HYDRANT INSTALLATION



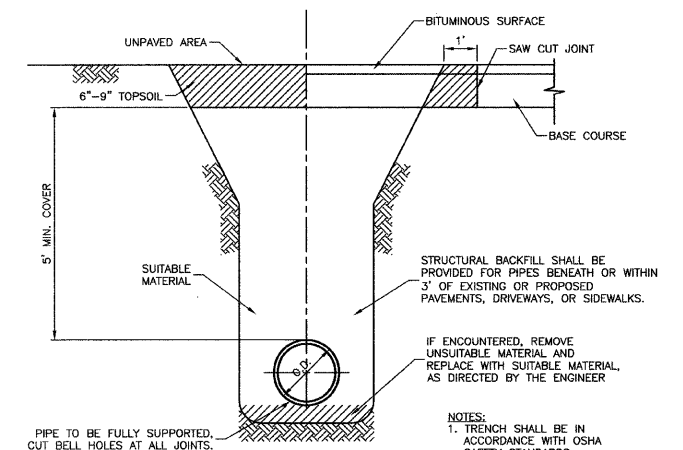
TYPICAL THRUST BLOCK INSTALLATIONS

PLANS



SECTION

- NOTES:
1. PROVIDE PRECAST OR CAST-IN-PLACE CONCRETE THRUST BLOCKS OF ADEQUATE SIZE AND THRUST BEARING SURFACE TO PREVENT MOVEMENT OF PIPELINE UNDER PRESSURE.
 2. PLACE THE BASE AND THE THRUST BEARING SIDES OF THRUST BLOCK DIRECTLY AGAINST UNDISTURBED EARTH.
 3. PLACE THRUST BLOCKING SO THE FITTING JOINTS WILL BE ACCESSIBLE FOR REPAIR.



TRENCH BACKFILL DETAIL FOR WATERMAIN

- NOTES:
1. HYDRANTS SHALL BE INSTALLED FACING TOWARD THE CURB. NO HYDRANT SHALL BE INSTALLED WITHIN 48" OF ANY OBSTRUCTION NOR SHALL ANY OBSTRUCTION BE PLACED WITHIN 48" OF A HYDRANT. ALL HYDRANTS SHALL BE PAINTED SAFETY RED BY THE MANUFACTURER.
 2. ALL VALVES SHALL OPEN COUNTER CLOCKWISE AND CLOSE CLOCKWISE WITH NON-RISING STEM.
 3. HYDRANT DRAIN HOLE SHALL BE FREE OF CONCRETE.

FILE NAME = 09291-DTIS-02 - P01

USER NAME =	DESIGNED — R/JW	REVISED —
	CHECKED — R/JW	REVISED —
PLOT SCALE =	DRAWN — PS	REVISED —
PLOT DATE = 08-20-09	CHECKED — AG	REVISED —

STATE OF ILLINOIS
DEPARTMENT OF TRANSPORTATION

SIDEWALK IMPROVEMENTS
DETAILS

SCALE: SHEET NO. 20 OF 35 SHEETS STA. TO STA.

F.A.U. RTE.	SECTION	COUNTY	TOTAL SHEETS	SHEET NO.
2757/1537	09-00060-00-SW	COOK	35	20
CONTRACT NO. 63228				
FED. ROAD DIST. NO. 1 ILLINOIS FED. AID PROJECT M-9003(325)				