

F. A. D. DIST. NO.	SECTION	COUNTY	TOTAL SHEETS	SHEET NO.
3753	09-00041-00-RS	WILL.	8	1
STA.		TO STA.		
FED. ROAD DIST. NO. 1	BLANKS	FED. AID PROJECT ARA-9003-(363)		

CONTRACT #63247

STATE OF ILLINOIS
DEPARTMENT OF TRANSPORTATION
DIVISION OF HIGHWAYS

PLANS FOR PROPOSED FEDERAL AID HIGHWAY

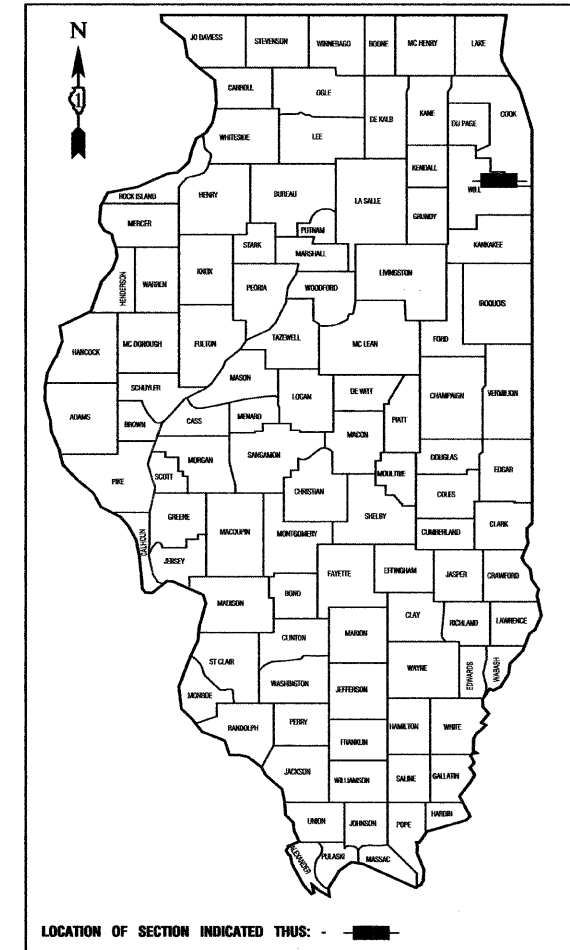
INDEX OF SHEETS

1. COVER SHEET, INDEX OF SHEETS, LOCATION MAP, INDEX OF STATE STANDARDS
2. SUMMARY OF QUANTITIES & GENERAL NOTES
3. TYPICAL CROSS SECTIONS
- 4.-5. PAVEMENT & STRIPING PLAN
- 6.-8. DISTRICT ONE STANDARD DETAILS

HIGHWAY STANDARDS

- | | |
|-----------|--|
| 000001-05 | STANDARD SYMBOLS, ABBREVIATIONS AND PATTERNS |
| 280001-04 | TEMPORARY EROSION CONTROL SYSTEMS |
| 442201-03 | CLASS C AND D PATCHES |
| 701201-03 | LANE CLOSURE, 2L, 2W, DAY ONLY, FOR SPEEDS > 45 MPH |
| 701306-02 | LANE CLOSURE, 2L, 2W, SLOW MOVING OPERATIONS DAY ONLY, FOR SPEEDS > 45 MPH |
| 701311-03 | LANE CLOSURE, 2L, 2W, MOVING OPERATIONS - DAY ONLY |
| 701901-01 | TRAFFIC CONTROL DEVICES |
| 780001-02 | TYPICAL PAVEMENT MARKINGS |

**FAU 3753/SAUK TRAIL RESURFACING
80TH AVENUE TO HARLEM AVENUE
LOCAL AGENCY PAVEMENT PRESERVATION
STREET RESURFACING
PROJECT: ARA-9003-(363)
SECTION NO.: 09-00041-00-RS
JOB NO.: C-91-678-09
VILLAGE of FRANKFORT
WILL COUNTY**



LOCATION OF SECTION INDICATED THUS: - [shaded box] -

STATE OF ILLINOIS DEPARTMENT OF TRANSPORTATION
DIVISION OF HIGHWAYS

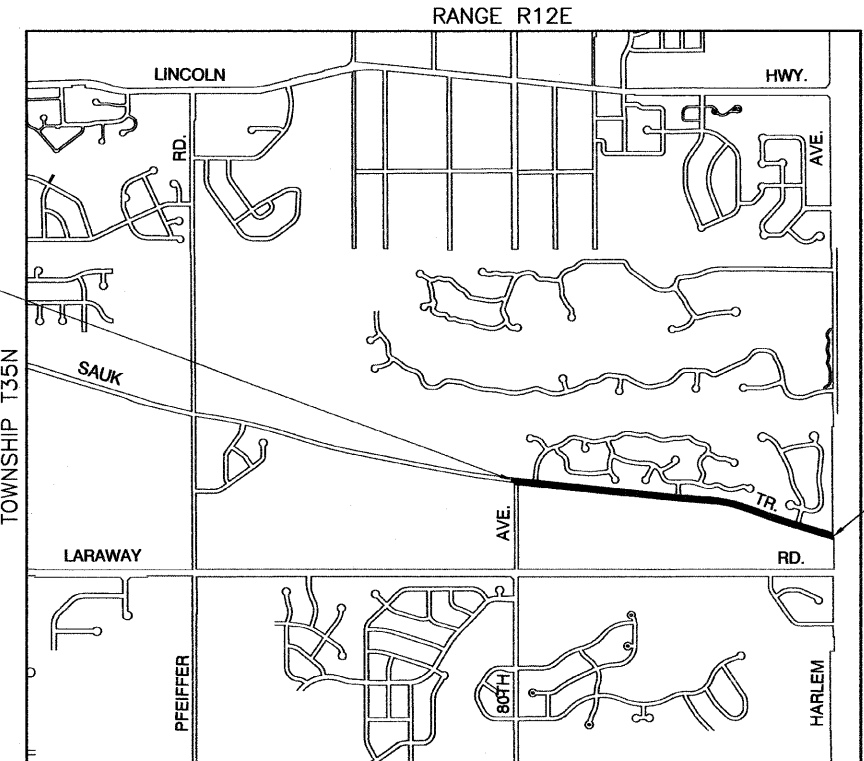
Approved: [Signature] 7/23/09
President, Village of Frankfort

Passed: August 31, 2009
[Signature]
District 1 Engineer of Local Roads & Streets

Released for Bid Based on Limited Review: September 1, 2009
[Signature]
Deputy Director of Highways, Region 1 Engineer

PRINTED BY THE AUTHORITY OF THE STATE OF ILLINOIS

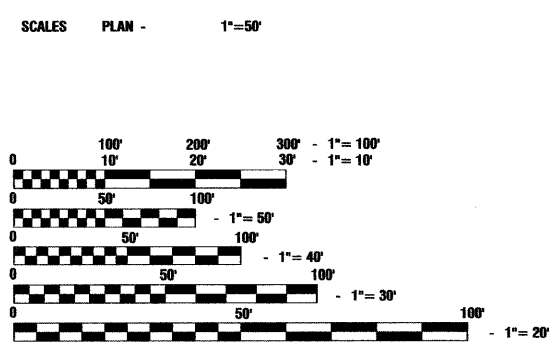
PREPARED BY OR UNDER THE DIRECT SUPERVISION OF:
[Signature] 7/21/09
Professional Engineer
License Expires: 11/30/09



LOCATION MAP

GROSS LENGTH=5,484 FEET=1.04 MILES
NET LENGTH=5,484 FEET=1.04 MILES

SAUK TRAIL COLLECTOR
ADT = 2,200 (2009)
DESIGN SPEED = 45 MPH
SPEED LIMIT = 45 MPH



FULL SIZE PLANS HAVE BEEN PREPARED USING STANDARD ENGINEERING SCALES, REDUCED SIZED PLANS WILL NOT CONFORM TO STANDARD SCALES, IN MAKING MEASUREMENTS ON REDUCED PLANS, THE ABOVE SCALES MAY BE USED.

J. U. L. I. E.
JOINT UTILITY LOCATION INFORMATION FOR EXCAVATION
1-800-892-0123 or 811

CONTRACT NO. 63247

I.D.O.T. FEDERAL AID DESIGN ENGINEER: MELCHOR MANGOBA 847-705-4408
CONSULTANTS: ROBINSON ENGINEERING, LTD. 815-806-0300