

**INDEX OF SHEETS**

SHEET #	TITLE
1	COVER/INDEX
2	GENERAL NOTES, LEGEND AND QUANTITIES
3	TYPICAL SECTION
4	PLAN AND PROFILE (NEAR PLAINFIELD RD), STA. 0+00 -10+00
5	PLAN AND PROFILE (NEAR LONGWOOD DR), STA. 10+00 -12+92
6	PLAN AND PROFILE (NEAR 91st ST), STA. 12+43 -17+49
7	DETAILS
8	DRIVEWAY DETAILS - DISTANCE BETWEEN ROW AND FACE OF CURB < 15' (4.5M)
9	TRAFFIC CONTROL AND PROTECTION FOR SIDE ROADS, INTERSECTIONS, & DRIVEWAYS
10	DISTRICT ONE TYPICAL PAVEMENT MARKINGS
11	OUTLET FOR CONCRETE CURB AND GUTTER
12	CROSS SECTIONS STATION 5+50.00 TO 9+00.00
13	CROSS SECTIONS STATION 9+50.00 TO 12+50.00
14	CROSS SECTIONS STATION 12+50.00 TO 14+00.00
15	CROSS SECTIONS STATION 14+50.00 TO 15+00.00
16	CROSS SECTIONS STATION 16+00.00 TO 17+00.00

**CONTACT**

**VILLAGE OF BURR RIDGE**  
**ENGINEERING DIVISION**  
**CONTACT: DAVID PREISSIG, P.E.**  
**OFFICE: 630-323-4733**  
**FAX: 630-323-4798**

**BURNS & MCDONNELL**  
**CONTACT: ANTHONY BRYANT, P.E.**  
**OFFICE: 630-724-3200**  
**FAX: 630-724-3201**

**IDOT**  
**CONTACT: MARILIN SOLOMON**  
**OFFICE: 847-705-4407**  
**FAX: 847-705-4203**

**COOK COUNTY**  
**CONTACT: BHANU VYAS, P.E.**  
**OFFICE: 312-603-1607**  
**FAX: 312-603-9945**

**STATE STANDARDS**

000001-05	STANDARD SYMBOLS, ABBREVIATIONS AND PATTERNS
424001-05	CURB RAMPS FOR SIDEWALKS
701301-03	LANE CLOSURE, 2L, 2W, SHORT TIME OPERATIONS
701501-05	URBAN LANE CLOSURE, 2L, 2W, UNDIVIDED
701606-06	URBAN LANE CLOSURE, MULTILANE, 2W WITH MOUNTABLE MEDIAN
701701-06	URBAN LANE CLOSURE, MULTILANE INTERSECTION
701801-04	LANE CLOSURE, MULTILANE 1W OR 2W CROSSWALK OR SIDEWALK CLOSURE
701901-01	TRAFFIC CONTROL DEVICES

**LENGTH OF PROJECT**

PROJECT LENGTH GROSS = 0.35 MILES (1838 FT)  
 NET = 0.31 MILES (1619 FT)

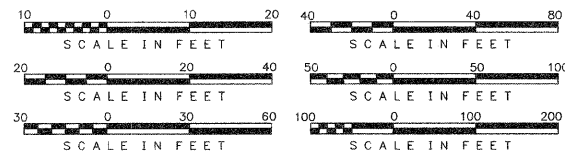
**DESIGN DESIGNATION - SIDEWALK**

**TRAFFIC DATA**

COUNTY LINE ROAD ADT = 12,000  
 SPEED LIMIT = 35

**BENCHMARKS**

VILLAGE OF BURR RIDGE BENCHMARK #110. SEE SHEET G002 FOR LOCATION AND DESCRIPTION.  
 1. STA. 5+65 ON IRON TIE ON OVERHEAD LINE POLE, ELEVATION: 691.51  
 2. 445 FT NORTH OF THE END OF CONSTRUCTION ON OVERHEAD LINE POLE, ELEVATION: 702.09



FULL SIZE PLANS HAVE BEEN PREPARED USING STANDARD ENGINEERING SCALES. REDUCED SIZED PLANS WILL NOT CONFORM TO STANDARD SCALES, IN MAKING MEASUREMENT ON REDUCED PLANS, THE ABOVE SCALES MAY BE USED.

**CONTRACT NO.: 63253**

STATE OF ILLINOIS  
 DEPARTMENT OF TRANSPORTATION  
 DIVISION OF HIGHWAYS

**PLANS FOR PROPOSED  
 FEDERAL AID HIGHWAY**

COUNTY LINE ROAD FAU (2684) (CH W19) SIDEWALK  
 PLAINFIELD ROAD (CH B37) TO LONGWOOD DRIVE

91ST STREET TO ASHTON DRIVE

PROJECT NO.: ARA-9003(515)

SECTION NO.: 09-00040-00-SW

VILLAGE OF BURR RIDGE

COOK COUNTY

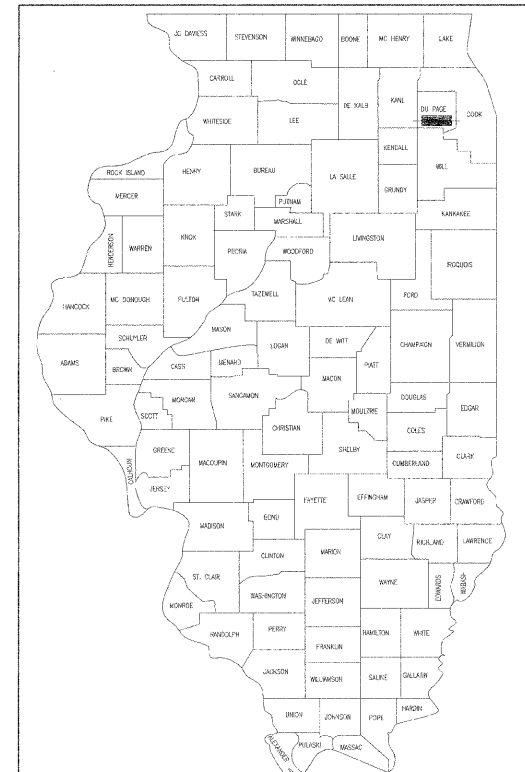
JOB NO.: C-91-744-09

WARNING

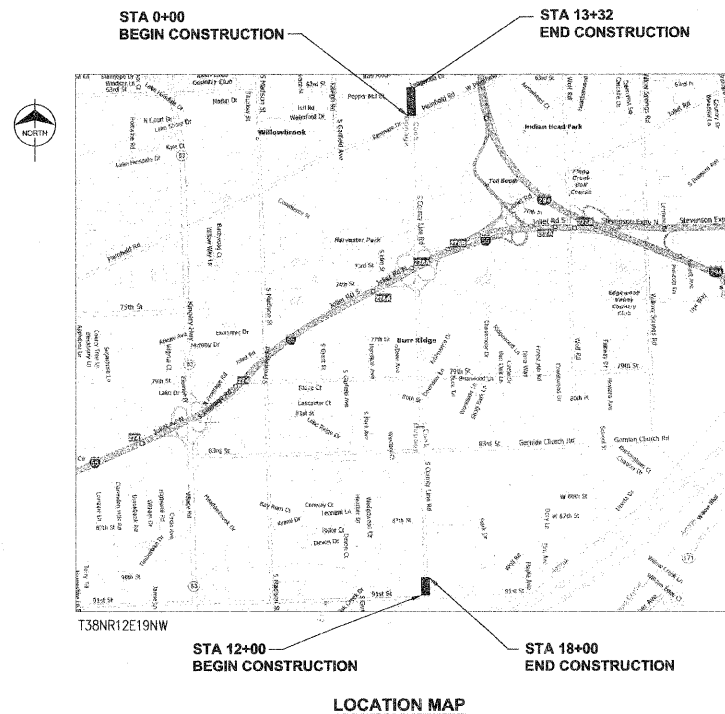


CALL  
**J.U.L.I.E.**  
 BEFORE YOU DIG  
**1-800-892-0123**

F.A.P. RTE.	SECTION	COUNTY	TOTAL SHEETS	SHEET NO.
09-00040-00-SW	COOK	16	1	
FEDERAL RD. DIST. NO.		ILLINOIS	FEDERAL AID PROJECT	
CONTRACT: 63253				



LOCATION OF SECTION INDICATED THUS: - [Symbol] -



STATE OF ILLINOIS  
 DEPARTMENT OF TRANSPORTATION  
 DIVISION OF HIGHWAYS

Approved: [Signature]  
 DIRECTOR OF PUBLIC WORKS  
 Local Agency Position

Passed: SEPTEMBER 1, 2009  
 [Signature]  
 District Engineer of Local Roads & Streets

Releasing for Bid  
 Based on Limited  
 Review: SEPTEMBER 1, 2009  
 [Signature]  
 Deputy of Highways, Region # Engineer



ANTHONY J. BRYANT, P.E.  
 NO. 062-056612  
 EXP. DATE: 11/30/2009

**PRINTED BY THE AUTHORITY  
 OF THE STATE OF ILLINOIS**

IL DESIGN FIRM  
 NO. 184-001310



EXPIRES:  
 04-30-11

**LEGEND**

- EXISTING R.O.W.
- - - - - EASEMENT LINE
- >—>—> STORM LINE
- - - - - SANITARY LINE
- 697 CONTOUR
- ◇ POWER POLE
- ⊕ LIGHT POLE
- ⊕ SIGN
- MAILBOX
- SIGNAL POST
- OVERHANGING SIGNAL POST
- HAND HOLE
- ⊙ STORM MANHOLE
- CATCH BASIN
- FLARED END SECTION
- ⊙ SANITARY MANHOLE
- SANITARY CLEANOUT
- ⊗ VALVE VAULT
- ▽ FIRE HYDRANT
- B-BOX
- CONIFEROUS TREE
- SHRUB
- DECIDUOUS TREE
- ▨ SIDEWALK AND DRIVEWAY REMOVAL
- ▨ CURB AND GUTTER REMOVAL

**SUMMARY OF QUANTITIES**

SP	Item Number	Items	Unit	Quantity
	20100110	TREE REMOVAL (6 TO 15 UNITS DIAMETER)	UNIT	28
	20101200	TREE ROOT PRUNING	EACH	3
	20101300	TREE PRUNING (1 TO 10 INCH DIAMETER)	EACH	5
	20101350	TREE PRUNING (OVER 10 INCH DIAMETER)	EACH	5
	20201200	REMOVAL & DISPOSAL OF UNSUITABLE MATERIAL	CU YD	597
	20400800	FURNISHED EXCAVATION	CU YD	473
*	21101615	TOPSOIL FURNISH AND PLACE, 4"	SQ YD	2,800
*	25000400	NITROGEN FERTILIZER NUTRIENT	POUND	26
*	25000500	PHOSPHORUS FERTILIZER NUTRIENT	POUND	26
*	25000600	POTASSIUM FERTILIZER NUTRIENT	POUND	26
*	25100630	EROSION CONTROL BLANKET	SQ YD	430
*	25200110	SODDING, SALT TOLERANT	SQ YD	2,370
*	25200200	SUPPLEMENTAL WATERING	UNIT	18
	28000400	PERIMETER EROSION BARRIER	FOOT	255
	28000500	INLET AND PIPE PROTECTION	EACH	2
	28100103	STONE RIPRAP, CLASS A2	SQ YD	6
	28100127	STONE RIPRAP, CLASS B4	SQ YD	6
	35101600	AGGREGATE BASE COURSE, TYPE B 4"	SQ YD	440
	35101800	AGGREGATE BASE COURSE, TYPE B 6"	SQ YD	170
	42300300	PORTLAND CEMENT CONCRETE DRIVEWAY PAVEMENT, 7 INCH	SQ YD	54
^	42300720	PORTLAND CEMENT CONCRETE DRIVEWAY PAVEMENT, 7 INCH, SPECIAL	SQ YD	15
^	42400200	PORTLAND CEMENT CONCRETE SIDEWALK, 5 INCH	SQ FT	8,410
	44000100	PAVEMENT REMOVAL	SQ YD	102
	44000200	DRIVEWAY PAVEMENT REMOVAL	SQ YD	33
	44000400	GUTTER REMOVAL	FOOT	300
	44000500	COMBINATION CURB AND GUTTER REMOVAL	FOOT	24
	44000600	SIDEWALK REMOVAL	SQ FT	400
	44201749	CLASS D PATCHES, TYPE 1, 9 INCH	SQ YD	12
	54213657	PRECAST REINFORCED CONCRETE FLARED END SECTIONS, 12"	EACH	1
	55100500	STORM SEWER REMOVAL 12"	FOOT	7
*	56400400	FIRE HYDRANTS TO BE RELOCATED	EACH	1
	60250200	CATCH BASINS TO BE ADJUSTED	EACH	1
	60255500	MANHOLES TO BE ADJUSTED	EACH	3
^	60258200	MANHOLES TO BE RECONSTRUCTED WITH NEW TYPE 1 FRAME, CLOSED LID	EACH	4
	60261320	INLETS TO BE ADJUSTED WITH NEW TYPE 11V FRAME AND GRATE	EACH	1
	60265700	VALVE VAULTS TO BE ADJUSTED	EACH	1
	60266100	VALVE VAULTS TO BE RECONSTRUCTED	EACH	1
	60603800	COMBINATION CONCRETE CURB AND GUTTER, TYPE B-6, 12	FOOT	24
	60604400	COMBINATION CONCRETE CURB AND GUTTER, TYPE B-6, 18	FOOT	500
^	70101800	TRAFFIC CONTROL AND PROTECTION, (SPECIAL)	L SUM	1
*	78000400	THERMOPLASTIC PAVEMENT MARKING - LINE 6"	FOOT	140
^	78008230	POLYUREA PAVEMENT MARKING TYPE I - LINE 6"	FOOT	417
*	78008270	POLYUREA PAVEMENT MARKING TYPE I - LINE 24"	FOOT	42
	550A0050	STORM SEWERS, CLASS A, TYPE 1, 12"	FOOT	20
^	B2000666	TREE, AMELANCHIER X GRANDIFLORA (APPLE SERVICEBERRY), 6' HEIGHT, SHRUB FORM, BALLED AND BURLAPPED	EACH	3
^	B2002220	TREE, CRATAEGUS VIRDIS WINTER KING (WINTER KING GREEN HAWTHORN), 2-1/2" CALIPER, TREE FORM, BALLED AND BURLAPPED	EACH	3
^	B2003016	TREE, MALUS BRANDYWINE (BRANDYWINE CRAB APPLE), 2" CALIPER, TREE FORM, BALLED AND BURLAPPED	EACH	3
^	C2001328	SHRUB, SYRINGA VULGARIS, (COMMON LILAC), 30" HEIGHT, BALLED AND BURLAPPED	EACH	4
^	C2005815	SHRUB, RHUS AROMATICA GRO-LOW (GRO-LOW FRAGRANT SUMAC), 15" WIDTH, BALLED AND BURLAPPED	EACH	205
^	C2C03426	SHRUB, HYDRANGEA ARBORESCENS 'ANNABELLE' (ANNABELLE SMOOTH HYDRANGEA), 3 GALLON	EACH	4
^	C2C071G3	SHRUB, ROSA 'CAREFREE BEAUTY' (CAREFREE BEAUTY SHRUB ROSE), CONTAINER GROWN, 3 GALLON	EACH	4
^	X0322494	CURB CUT	FOOT	59
^	X0323017	TEMPORARY INFORMATIONAL SIGNS	EACH	1
^	X0324450	SEGMENTAL CONCRETE BLOCK WALL	SQ FT	1380
^	XX003503	FLARED END SECTION REMOVAL	EACH	1
^	XXXX0404	BRICK PAVEMENT REMOVAL AND REPLACEMENT	SQ FT	238
^	XXXX0729	DETECTABLE WARNING S, SPECIAL	SQ FT	56
^	Z0013798	CONSTRUCTION LAYOUT	L SUM	1
^	42400430	PORTLAND CEMENT CONCRETE SIDEWALK, 5 INCH, SPECIAL	SQ FT	50
^	16700000	DEBILITATION	L SUM	1

\* DENOTES SPECIAL PROVISION

**GENERAL NOTES**

- ALL CONSTRUCTION SHALL BE IN ACCORDANCE WITH THE "STANDARD SPECIFICATIONS FOR ROAD AND BRIDGE CONSTRUCTION" ADOPTED JANUARY 1, 2007, THE "SUPPLEMENTAL SPECIFICATIONS AND RECURRING SPECIAL PROVISIONS" ADOPTED JANUARY 1, 2009, THE LATEST EDITION OF THE "ILLINOIS MANUAL ON UNIFORM TRAFFIC CONTROL DEVICES FOR STREETS AND HIGHWAYS" (MUTCD), THE DETAILS IN THE PLANS AND THE "SPECIAL PROVISIONS" INCLUDED IN THE CONTRACT DOCUMENT.
- THE CONTRACTOR SHALL NOTIFY J.U.L.I.E. (800-892-0123) AT LEAST 48 HOURS PRIOR TO CONSTRUCTION FOR LOCATIONS OF UTILITIES, AND SHALL BE RESPONSIBLE FOR THE PROTECTION OF THE SAME.
- CONTRACTORS ARE CAUTIONED AGAINST INSTITUTING AND CHANGES AND/OR SUBSTITUTIONS TO THE PROJECT REPRESENTED BY THESE DRAWINGS WITHOUT PRIOR WRITTEN APPROVAL BY THE ENGINEER. VISUAL CONTACT WITH THESE DRAWINGS SHALL CONSTITUTE CONCLUSIVE EVIDENCE OF ACCEPTANCE OF THESE RESTRICTIONS.
- THE CONTRACTOR SHALL NOTIFY THE ENGINEER AND THE VILLAGE OF BURR RIDGE AT LEAST 48 HOURS IN ADVANCE OF CONSTRUCTION. NO UNDERGROUND WORK SHALL BE COVERED UNTIL IT HAS BEEN INSPECTED. APPROVAL TO PROCEED MUST BE OBTAINED FROM THE ENGINEER PRIOR TO POURING ANY CONCRETE AFTER FORMS HAVE BEEN SET.
- WRITTEN DIMENSIONS ON THESE DRAWINGS SHALL TAKE PRECEDENCE OVER SCALED DIMENSIONS. CONTRACTORS SHALL VERIFY AND BE RESPONSIBLE FOR ALL ELEVATIONS, DIMENSIONS, AND CONDITIONS ON THE JOB. THE ENGINEER SHALL BE NOTIFIED AS SOON AS POSSIBLE OF ANY VARIATIONS FROM THE DIMENSIONS AND CONDITIONS SHOWN ON THESE DRAWINGS.
- THE CONTRACTOR SHALL BE RESPONSIBLE FOR THE PROTECTION OF ALL PUBLIC AND PRIVATE UTILITIES, EVEN THOUGH THEY MAY NOT BE SHOWN ON THE DRAWINGS. ANY UTILITY DAMAGES DURING CONSTRUCTION SHALL BE REPAIRED OR REPLACED TO THE SATISFACTION OF THE OWNER AT THE CONTRACTOR'S EXPENSE.
- THE CONTRACTOR SHALL BE RESPONSIBLE FOR REMOVING IMMEDIATELY ANY MUD, DIRT, OR DEBRIS DEPOSITED ON ROADWAYS FROM ANY VEHICLES EXITING OR ENTERING THE SITE.
- IT IS THE CONTRACTORS RESPONSIBILITY TO GUARD AND PROTECT NEWLY POURED CONCRETE AGAINST ANY FOREIGN MARKINGS, GRAFFITI OR OTHER DAMAGE, AND AT HIS EXPENSE, REPLACE ANY SIDEWALK NOT ACCEPTABLE TO THE ENGINEER.
- TRAFFIC CONTROL SHALL CONFORM TO IDOT'S HIGHWAY STANDARDS AND THE "MANUAL ON UNIFORM TRAFFIC CONTROL DEVICES FOR STREETS AND HIGHWAYS" AT ALL TIMES DURING CONSTRUCTION. TRAFFIC CONTROL SHALL INCLUDE ADVANCE WARNING LANE CLOSURE SIGNAGE, AN ARROW BOARD AND TYPE I BARRICADES WITH SANDBAGS.
- THE CONTRACTOR SHALL COORDINATE CONSTRUCTION ACTIVITIES WITH UTILITY COMPANIES AND THE VILLAGE OF BURR RIDGE.
- PRIVATE SPRINKLER HEADS, LINES OR UNDERGROUND LIGHTING SYSTEMS LOCATED ON PRIVATE PROPERTY THAT ARE DAMAGED BY THE CONTRACTOR SHALL BE REPAIRED BY THE CONTRACTOR AT NO EXPENSE TO THE CONTRACT. THE CONTRACTOR SHALL INFORM THE ENGINEER IF ANY PRIVATE SPRINKLER HEADS, LINES OR UNDERGROUND LIGHTING SYSTEMS LOCATED WITHIN THE RIGHT-OF-WAY (AND INTERFERE WITH CONSTRUCTION OPERATIONS) NEED TO BE RELOCATED ONTO PRIVATE PROPERTY. THE ENGINEER WILL THEN CONTACT THE HOMEOWNER TO HAVE THEM RELOCATED.
- SIGN RELOCATION SHALL BE INCIDENTAL TO THE CONTRACT. INVENTORY OF SIGNS SHALL OCCUR BY CONTRACTOR AND ENGINEER PRIOR TO WORK.
- THE ENGINEER AND VILLAGE OF BURR RIDGE SHALL DETERMINE THE PROPOSED TREE AND SHRUB LOCATIONS IN THE FIELD DURING CONSTRUCTION.
- RESIDENTIAL DRIVEWAY ACCESS MAY NOT BE DISRUPTED FOR MORE THAN 120 HOURS.
- ALL REQUIRED SAWCUTTING WILL BE INCIDENTAL TO PROJECT.

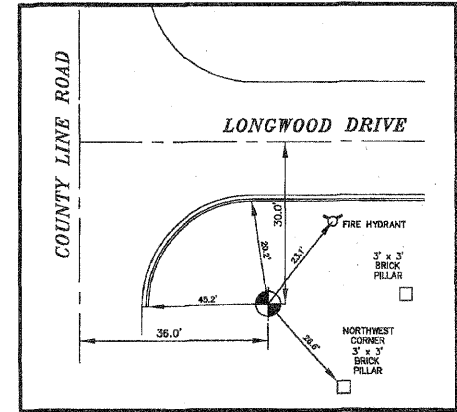
F.A.P. RTE.	SECTION	COUNTY	TOTAL SHEETS	SHEET NO.
—	09-00040-00-SW	COOK	16	2
FEDERAL RD. DIST. NO.		ILLINOIS	FEDERAL AID PROJECT	
CONTRACT: 63253				

Scale For Microfilming

Inches

**VILLAGE OF BURR RIDGE CONTROL MONUMENT DIAGRAM**

STATION NAME: BM #10  
 DATE: 11-16-05  
 STATION LOCATION:  
 SET MONUMENT LOCATED AT THE SOUTHEAST CORNER OF COUNTY LINE ROAD AND LONGWOOD DRIVE  
 NORTHING: 1860771.09  
 EASTING: 1098001.29  
 ELEVATION: 699.25  
 STATION DESCRIPTION:  
 BERTSEN MONUMENT CONSISTING OF 9/16" DIA. STAINLESS STEEL ROD INSIDE GREASE FILLED 1" DIA. PVC, DRIVEN TO A REFUSAL DEPTH OF 8 FEET ENCLOSED IN SAND AND 6" PVC PIPE WITH ALUMINUM ACCESS COVER. (REFUSAL IS DEFINED BY HGS AS A DRIVING RATE OF 60 SECONDS PER FOOT WITH A 32 LB JACKHAMMER.)



Area Survey Company  
 11340 West 159th Street  
 Orland Park, Illinois 60467  
 Phone: (708) 349-7354  
 Fax: (708) 349-7372  
 E-mail: areasurvey@sbglobal.net

EARTHWORK SCHEDULE			
LOCATION (COUNTY LINE ROAD)	REMOVAL AND DISPOSAL OF UNSUITABLE MATERIAL (CU. YD.) 20201200	FURNISHED EXCAVATION (CU. YD.) 20400800	TOPSOIL FURNISH AND PLACE, 4" (SQ. YD.) 21101615
START TO STA. 6+00	46	1.2	336
STA. 6+00 TO STA. 7+00	31	3.4	278
STA. 7+00 TO STA. 9+00	63	2	731
STA. 9+00 TO STA. 12+50	37	58.4	655
NORTH 91ST ON COUNTY LINE ROAD	420	408	800
<b>TOTAL</b>	<b>597</b>	<b>473</b>	<b>2800</b>

\*TOPSOIL REMOVAL DEPTH ESTIMATED AT 4"



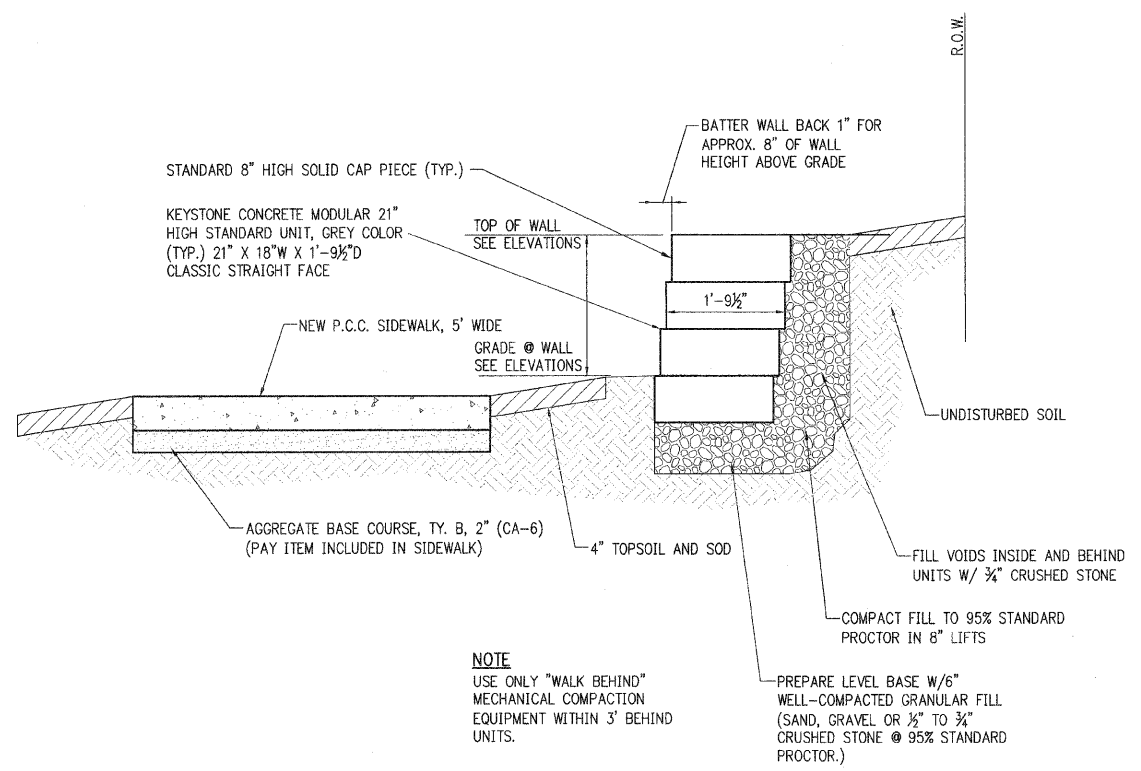
date	detailed
05/08/2009	DAC
designed	checked
TMC	AJB

**VILLAGE OF BURR RIDGE COUNTY LINE ROAD ROW IMPROVEMENT PROJECT GENERAL NOTES**

project	contract
49897	63253
drawing	rev.
sheet 2	of 16 sheets
file 49897G002	

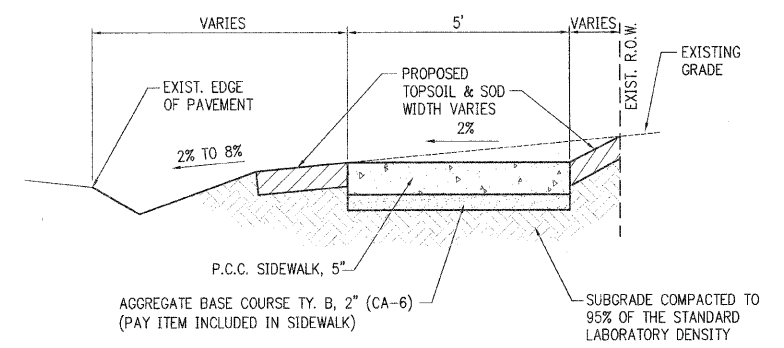
1 2 3 4 5 6 7 8 9 10 11 12 13

F.A.P. R.T.E.	SECTION	COUNTY	TOTAL SHEETS	SHEET NO.
-	09-00040-00-SW	COOK	16	3
FEDERAL RD. DIST. NO.	ILLINOIS	FEDERAL AID PROJECT		
CONTRACT: 63253				



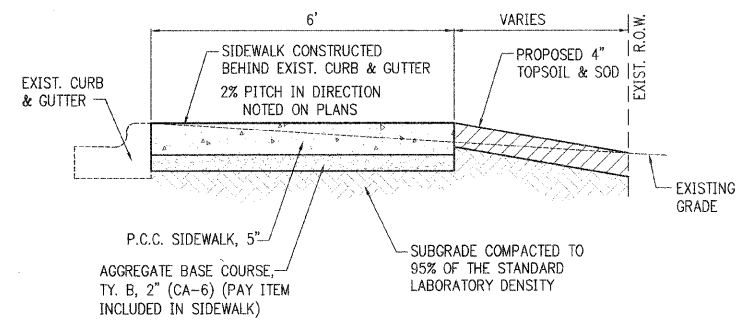
**SEGMENTAL CONCRETE BLOCK WALL  
TYPICAL SECTION**

COUNTY LINE ROAD AND 91st STREET  
STATION 12+90 TO 14+61



**EXISTING & PROPOSED TYPICAL SECTION**

COUNTY LINE ROAD AND PLAINFIELD ROAD  
STATION 0+00 TO 13+32



**EXISTING & PROPOSED TYPICAL SECTION**

COUNTY LINE ROAD AND ASHTON DRIVE  
STATION 12+00 TO 18+00

Scale For Microfilming  
Inches

COPYRIGHT © 2006 BURNS & MCDONNELL ENGINEERING COMPANY, INC.

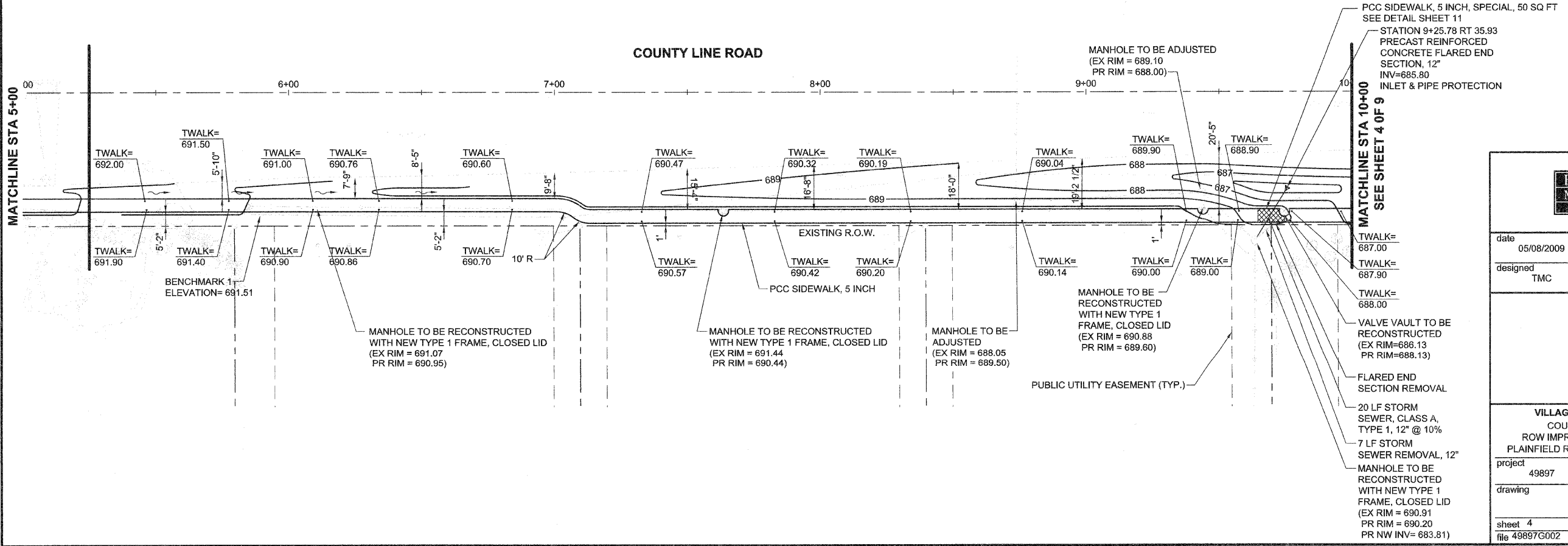
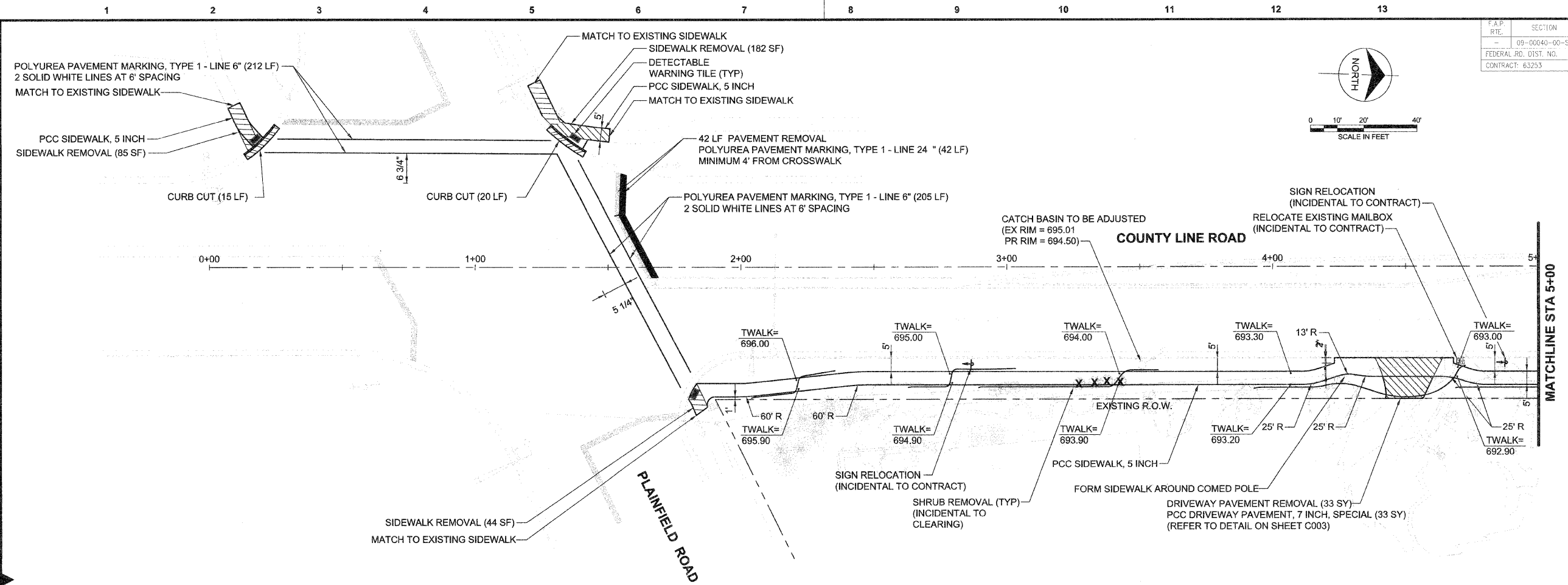
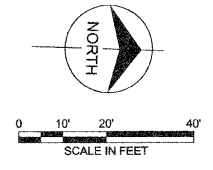


date	05/08/2009	detailed	DAC
designed	TMC	checked	AJB

**VILLAGE OF BURR RIDGE  
COUNTY LINE ROAD  
ROW IMPROVEMENT PROJECT  
TYPICAL SECTION**

project	49897	contract	63253
drawing		rev.	
sheet 3	of 16	sheets	
file 49897G002			

F.A.P. RTE.	SECTION	COUNTY	TOTAL SHEETS	SHEET NO.
09-00040-00-SW		COOK	16	4
FEDERAL RD. DIST. NO.	ILLINOIS	FEDERAL AID PROJECT		
CONTRACT: 63253				



date	05/08/2009	detailed	DAC
designed	TMC	checked	AJB

**VILLAGE OF BURR RIDGE**  
 COUNTY LINE ROAD  
 ROW IMPROVEMENT PROJECT  
 PLAINFIELD RD AND COUNTY LINE RD

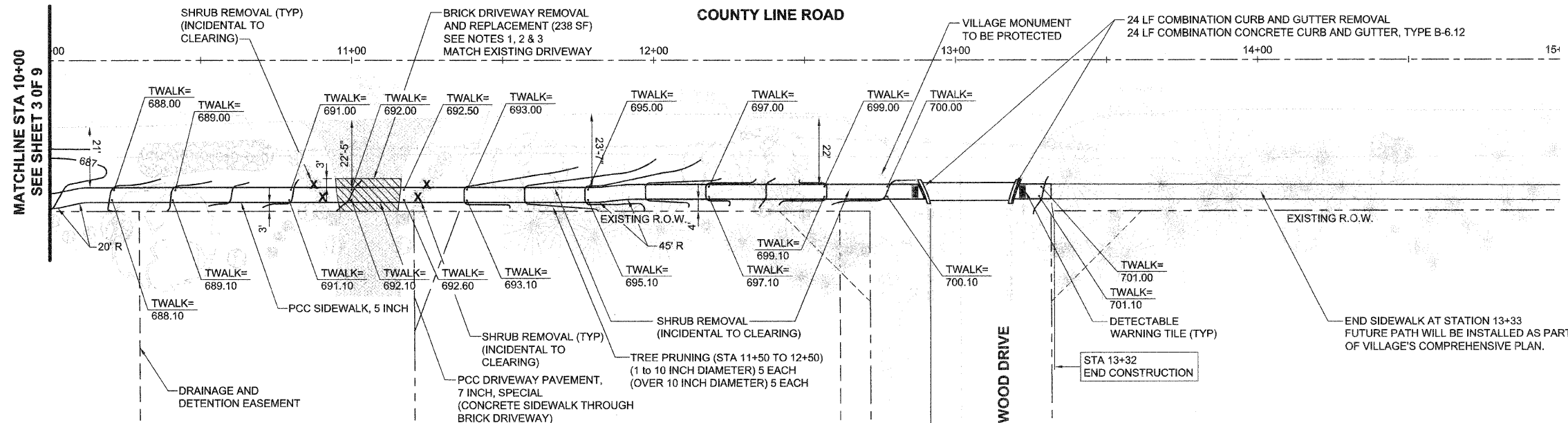
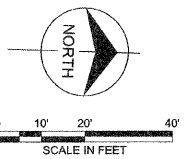
project	49897	contract	63253
drawing		rev.	

sheet 4	of 16	sheets
file 49897G002		

COPYRIGHT © 2008 BURNS & McDONNELL ENGINEERING COMPANY, INC.

1 2 3 4 5 6 7 8 9 10 11 12 13

F.A.P. RTE	SECTION	COUNTY	TOTAL SHEETS	SHEET NO.
-	C9-00040-00-SW	COOK	16	5
FEDERAL RD. DIST. NO.	ILLINOIS	FEDERAL AID PROJECT		
CONTRACT: 63253				




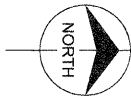
**NOTES:**

1. THE PROPOSED SIDEWALK SHALL EXTEND THROUGH THE EXISTING BRICK DRIVEWAY. GREAT CARE SHALL BE TAKEN BY THE CONTRACTOR TO REMOVE AND REPLACE THE EXISTING BRICK DRIVEWAY SO THAT NO BRICKS ARE DAMAGED. THE LEFTOVER BRICKS SHALL BE RETURNED TO THE HOMEOWNER.
2. HOMEOWNER WOULD LIKE TO REMOVE AND SALVAGE LANDSCAPING SURROUNDING THE DRIVEWAY THAT MAY BE DAMAGED BY THE SIDEWALK CONSTRUCTION. CONTRACTOR SHALL INFORM VILLAGE BEFORE CONSTRUCTION BEGINS SO THAT THE HOMEOWNER CAN BE CONTACTED TO REMOVE LANDSCAPING. ANY REMAINING LANDSCAPING SHALL BE REMOVED BY THE CONTRACTOR AND IS INCIDENTAL TO CLEARING.
3. PRIVATE SPRINKLER HEADS, LINES OR UNDERGROUND LIGHTING SYSTEM LOCATED ON PRIVATE PROPERTY THAT ARE DAMAGED BY THE CONTRACTOR SHALL BE REPAIRED BY THE CONTRACTOR AT NO EXPENSE TO THE CONTRACT. THE CONTRACTOR SHALL INFORM THE ENGINEER IF ANY PRIVATE SPRINKLER HEADS, LINES, OR UNDERGROUND LIGHTING SYSTEMS LOCATED WITHIN THE RIGHT-OF-WAY (AND INTERFERE WITH CONSTRUCTION OPERATIONS) NEED TO BE RELOCATED ONTO PRIVATE PROPERTY. THE ENGINEER WILL THEN CONTACT THE HOMEOWNER TO HAVE THEM RELOCATED.

Millimeters  
Scale For Microfitting  
Inches

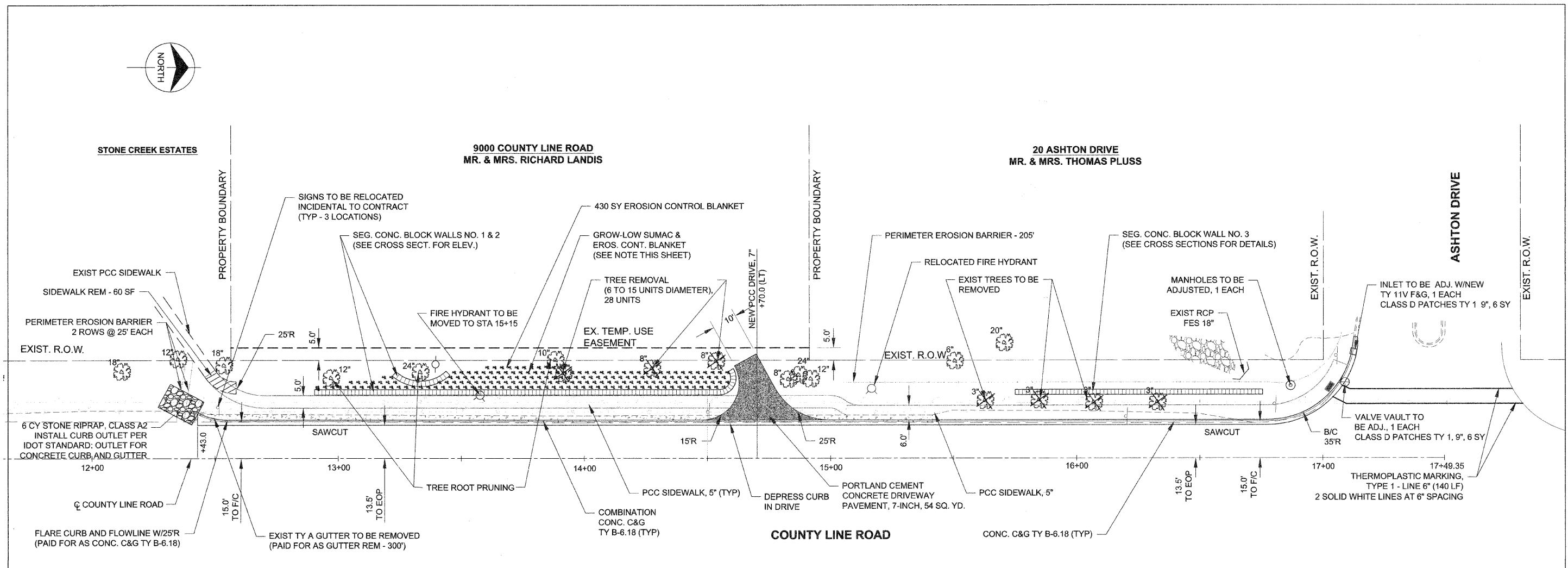
COPYRIGHT © 2006 BURNS & MCDONNELL ENGINEERING COMPANY, INC.

	
date 05/08/2009	detailed DAC
designed TMC	checked AJB
<b>VILLAGE OF BURR RIDGE</b> COUNTY LINE ROAD ROW IMPROVEMENT PROJECT PLAINFIELD RD AND COUNTY LINE RD	
project 49897	contract 63253
drawing	rev.
sheet 5 of 16 sheets	file 49897G002



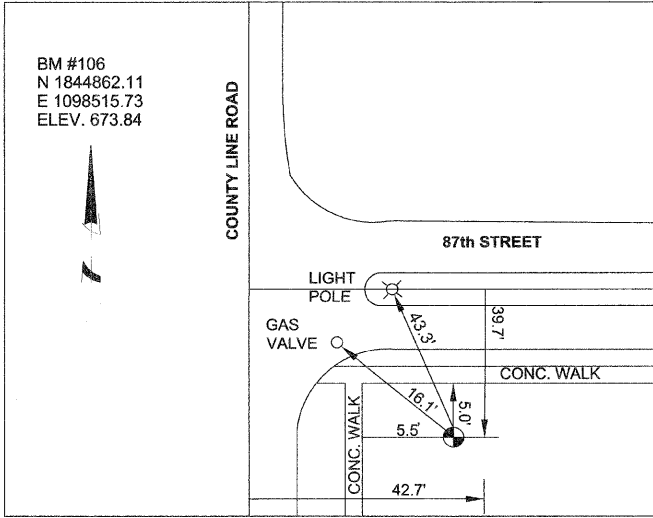
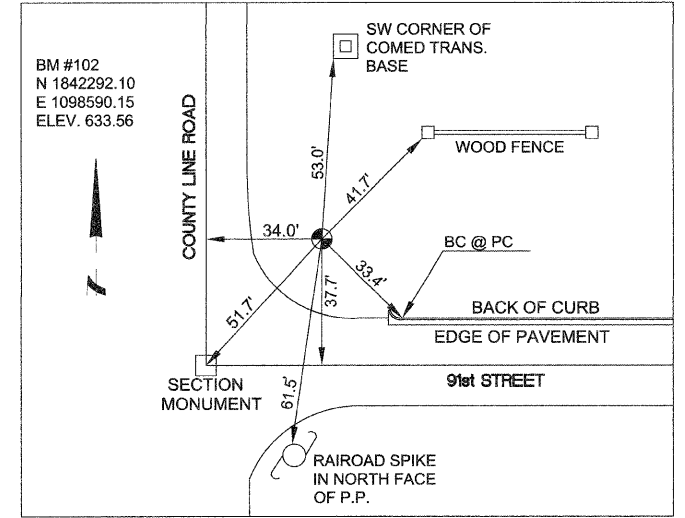
PLAN	SURVEYED	DATE
NOTE BOOK	PLOTTED	BY
NO.	RT. OF WAY CHECKED	
	CADD FILE NAME	

PROFILE	SURVEYED	DATE
NOTE BOOK	PLOTTED	BY
NO.	GRADES CHECKED	
	STRUCTURE NOTATIONS QTRD	



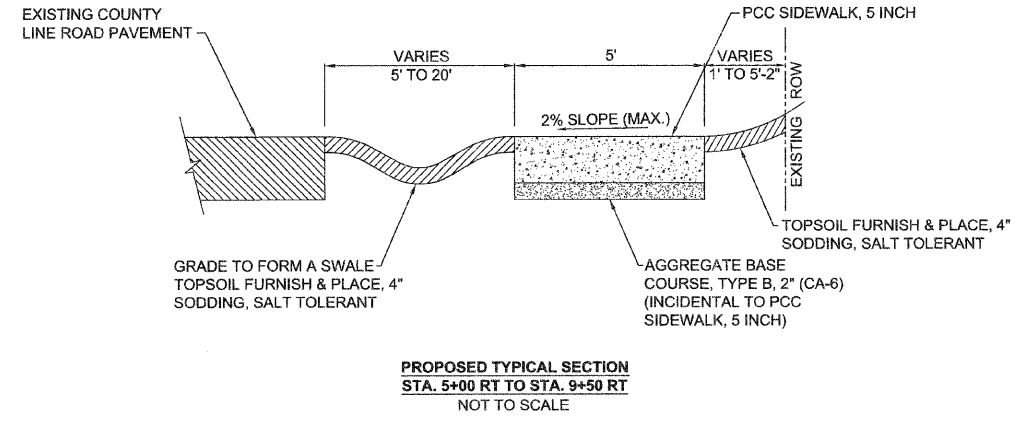
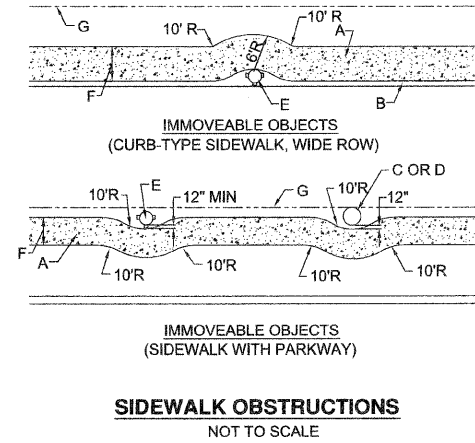
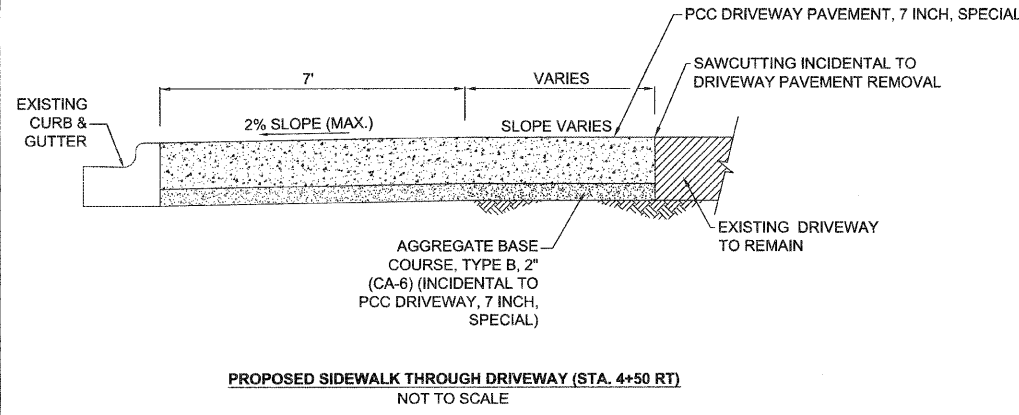
**NOTES:**  
 GRO-LOW SUMAC (RHUS AROMATICA "GRO-LOW", 1 GAL. CONTAINER) TO BE PLACED AT THE ROW SPACING OF 2 FEET AND BETWEEN THE PLANTS IN EACH ROW AT 3 FEET SPACING WHICH SHALL BE INSTALLED BEHIND THE RETAINING WALLS AS SHOWN ON THE PLAN.

**BENCHMARKS (DETAILS NOT TO SCALE)**



FILE NAME =	USER NAME =	DESIGNED --	REVISED --	<b>STATE OF ILLINOIS DEPARTMENT OF TRANSPORTATION</b>	<b>C003 PLAN AND PROFILE (NEAR 91ST STREET)</b>	F.A.U. RTE.	SECTION	COUNTY	TOTAL SHEETS	SHEET NO.
		DRAWN --	REVISED --			09-00040-00-SW	COOK	16	6	
		CHECKED --	REVISED --			COUNTY LINE ROAD (CH W19) SIDEWALK	CONTRACT NO. 63253			
		DATE --	REVISED --			FED. ROAD DIST. NO. 1 ILLINOIS FED. AID PROJECT				

F.A.P. RTE	SECTION	COUNTY	TOTAL SHEETS	SHEET NO.
-	09-00040-00-SW	COOK	16	7
FEDERAL RD. DIST. NO.		ILLINOIS	FEDERAL AID PROJECT	
CONTRACT: 63253				



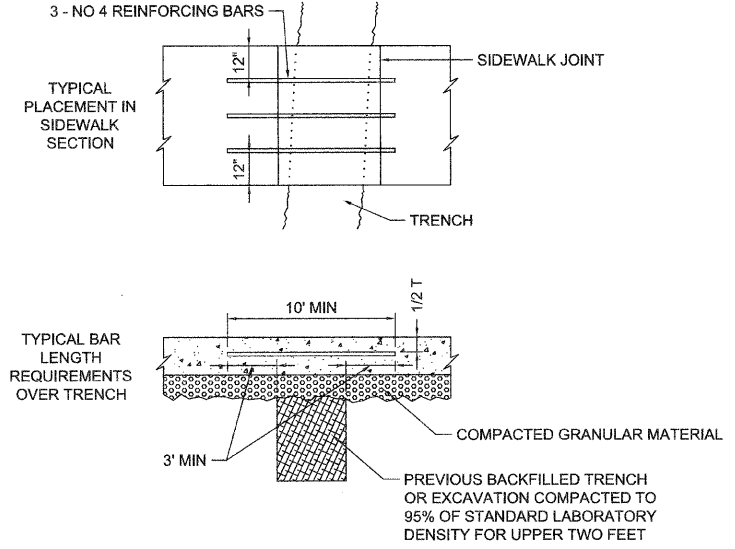
**CONSTRUCTION NOTE:**  
 A. SIDEWALK  
 B. CURB  
 C. SERVICE POLE, SEE NOTES 1 AND 2.  
 D. TREE TRUNK, SEE NOTE 1  
 E. FIRE HYDRANT, SEE NOTES 1 AND 2.  
 F. SIDEWALK WIDTH.  
 G. RIGHT-OF-WAY (ROW)

**GENERAL NOTES:**  
 1. A FIRE HYDRANT, SERVICE POLE OR TREE TRUNK SHALL BE CONSIDERED IMMOVABLE ONLY WHEN DIRECTED BY THE VILLAGE ENGINEER.  
 2. WHEN A SERVICE POLE OR FIRE HYDRANT IS LOCATED WITHIN THE SIDEWALK AREA, AND IS CONSIDERED IMMOVABLE, A 1/2" EXPANSION JOINT SHALL BE INSTALLED ENCIRCLING THE OBJECT. THIS WORK SHALL BE INCIDENTAL TO THE SIDEWALK COST.

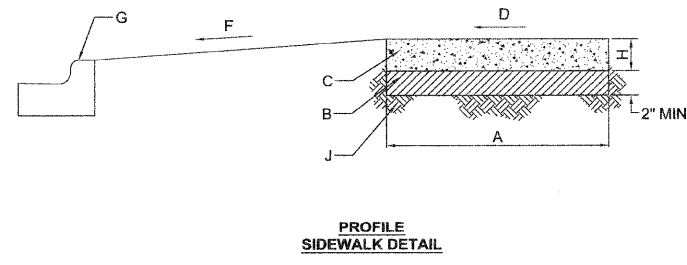
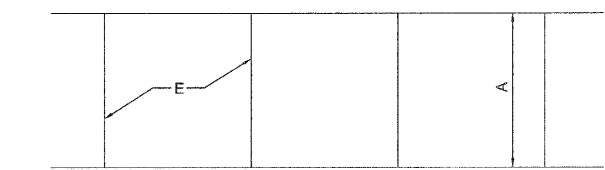
- LEGEND**
- A. 5' NORMAL WIDTH OR AS INDICATED ON PLANS
  - B. AGGREGATE BASE COURSE, TY. B, 2" THICK, (CA-6) (INCIDENTAL TO PCC SIDEWALK, 5 INCH)
  - C. P.C.C. SIDEWALK
  - D. SLOPE 1/4" PER FOOT MAXIMUM TO STREET SIDE, OR AS NOTED ON PLAN
  - E. JOINTS, SEE NOTES 3 AND 4
  - F. SLOPE 2% TO 8% TOWARDS STREET, OR AS NOTED ON PLAN
  - G. CURB AND GUTTER
  - H. CONCRETE THICKNESS, SEE NOTE 1
  - J. COMPACTED SUBGRADE TO 95% OF THE STANDARD LABORATORY DENSITY

- GENERAL NOTES**
1. STANDARD THICKNESS OF PCC SIDEWALK SHALL BE A MINIMUM OF 5 INCHES. THICKNESS SHALL BE 7 INCHES ACROSS DRIVEWAY ENTRANCE.
  2. WHERE WOODEN FORMS ARE USED, 2x4's ARE NOT ALLOWED. ONLY 2x6's SHALL BE USED.
  3. PREFORMED 3/4" EXPANSION JOINTS SHALL BE CONSTRUCTED AT MAX. SPACING OF 40'.
  4. FORMED OR SAW-CUT CONTRACTION JOINTS SHALL BE SPACED GENERALLY 5' APART, BUT NO LESS THAN 4' AND NO MORE THAN 6'.
  5. 1/2" FOAM EXPANSION JOINTS SHALL BE INSTALLED WHERE SIDEWALK ABUTS BUILDINGS, TRAFFIC SIGNAL FOUNDATIONS, SERVICE POLES, AND OTHER IMMOVABLE STRUCTURES.
  6. CONCRETE TO BE MINIMUM 6-BAG MIX.

Scale For Microlining  
 Millimeters  
 Inches



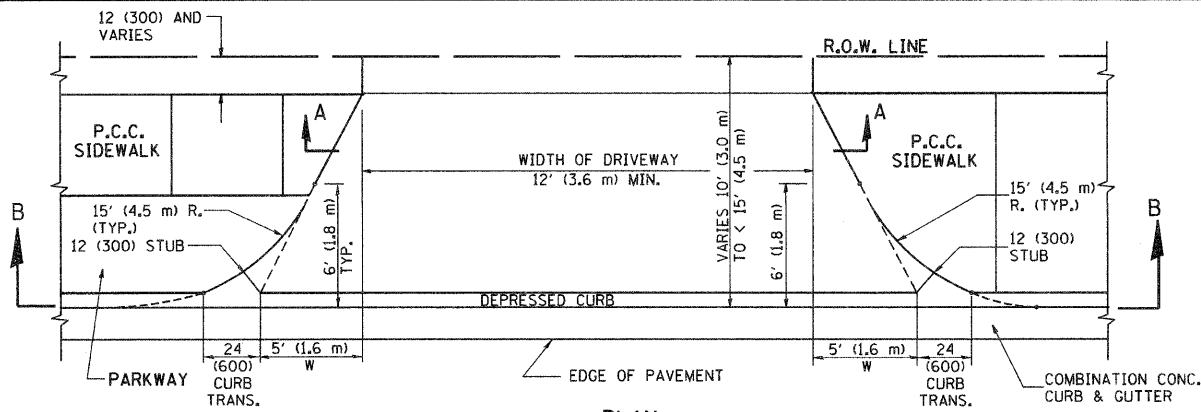
**PCC SIDEWALK 5", SPECIAL**  
NOT TO SCALE



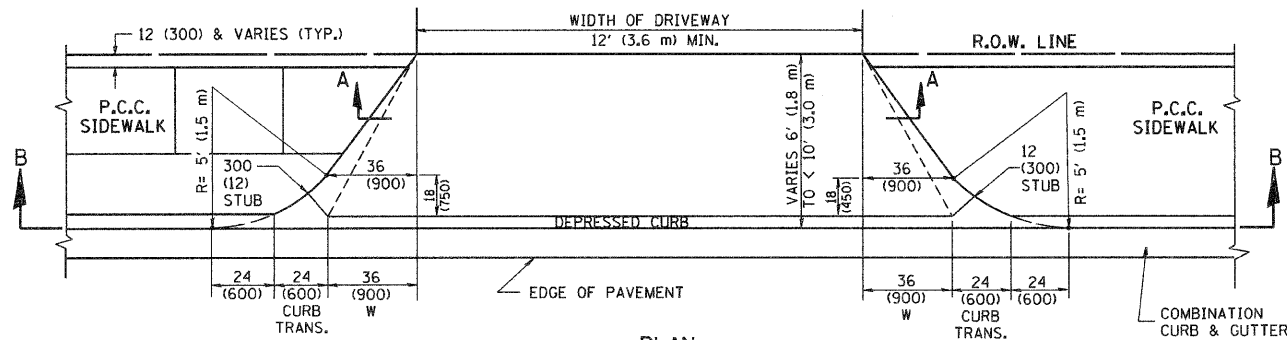
**P.C.C. SIDEWALK 5" & 7"**  
NOT TO SCALE

date 05/08/2009	detailed DAC
designed JAB	checked AJB
<b>VILLAGE OF BURR RIDGE</b> COUNTY LINE ROAD ROW IMPROVEMENT PROJECT DETAILS 1 OF 1	
project 49897	contract 63253
drawing	rev.
sheet 7	of 16 sheets
file 49897C007	

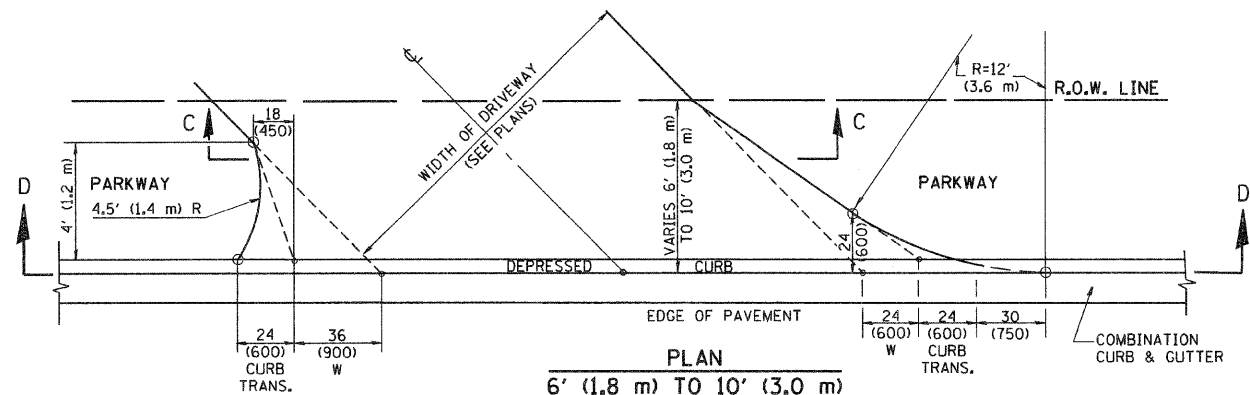
F.A. DISTRICT	SECTION	COUNTY	TOTAL SHEETS	SHEET NO.
09-00040-00-SW		COOK	16	8
STA. TO STA.		FED. ROAD DIST. NO. 1 ILLINOIS FED. AID PROJECT		



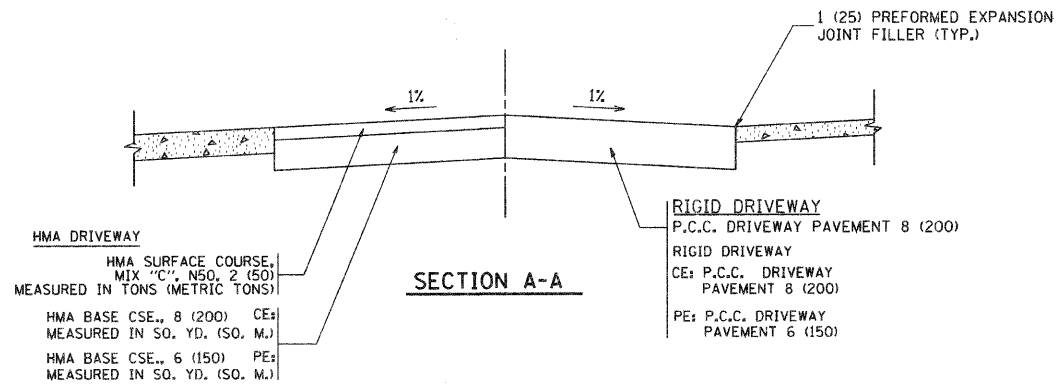
**PLAN**  
10' (3.0 m) TO < 15' (4.5 m)



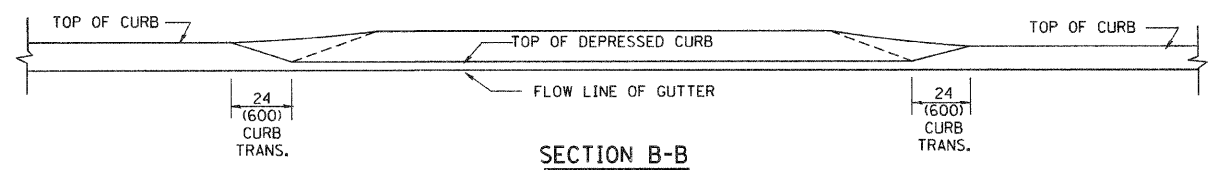
**PLAN**  
6' (1.8 m) TO < 10' (3.0 m)



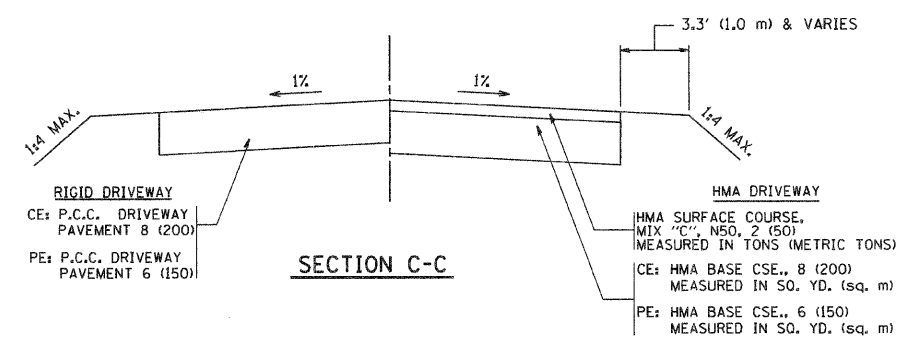
**PLAN**  
6' (1.8 m) TO 10' (3.0 m)



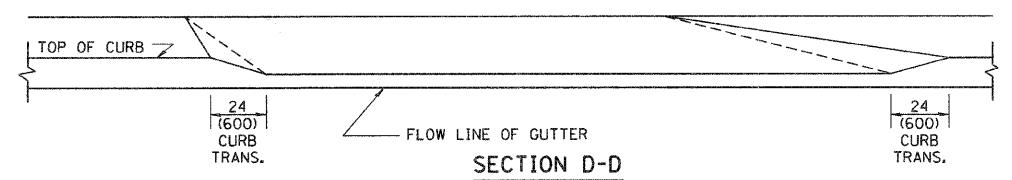
**SECTION A-A**



**SECTION B-B**



**SECTION C-C**



**SECTION D-D**

**GENERAL NOTES**

DRIVEWAY SLOPES, LOCATIONS, & GEOMETRIC LAYOUT SHALL BE IN ACCORDANCE WITH THE LATEST EDITION OF THE "HANDBOOK FOR POLICY ON PERMITS FOR ACCESS DRIVEWAYS TO STATE HIGHWAYS". FOR FURTHER LAYOUT REQUIREMENTS, REFER TO ILLUSTRATION 10 IN THE PERMIT HANDBOOK. WHERE SIDEWALKS EXIST, DRIVEWAYS SHALL BE REPLACED WITH RIGID PAVEMENT. WHERE NO SIDEWALKS EXIST, DRIVEWAYS SHALL BE REPLACED IN KIND. SIDEWALK CROSS SLOPE THRU DRIVEWAY AREA TO BE A MAXIMUM OF 1:50.

WHEN THE DISTANCE BETWEEN R.O.W. AND THE BACK OF CURB IS EQUAL TO OR LESS THAN 8' (2.4 m), THE P.C.C. SIDEWALK SHALL EXTEND TO THE BACK OF CURB.

THE RESIDENT ENGINEER SHALL CONTACT THE TRAFFIC PERMIT OFFICE AT 847/705-4131 FOR ANY QUESTIONS ON DRIVEWAYS SHOWN IN THE PLANS; SPECIFICALLY IN REFERENCE TO ADDITIONAL AND/OR RELOCATION/REMOVAL OF A DRIVEWAY.

COMBINATION CONCRETE CURB & GUTTER SHALL BE MEASURED STRAIGHT ACROSS THE DRIVEWAY. NO ADDITIONAL COMPENSATION WILL BE ALLOWED FOR THE CURB & GUTTER TRANSITION.

THE 1 (25) PREFORMED EXPANSION JOINT FILLER WILL NOT BE PAID SEPARATELY, BUT SHALL BE CONSIDERED INCLUDED IN THE COST OF THE P.C.C. DRIVEWAY PAVEMENT OR P.C.C. SIDEWALK.

"W" VARIES FROM 36 (900) TO 5' (1.5 m) PROPORTIONAL TO THE LENGTH (L), FROM 6' (1.8 m) TO 10' (3 m).

ALL DIMENSIONS ARE IN INCHES (MILLIMETERS) UNLESS OTHERWISE NOTED.

ILLINOIS DEPARTMENT OF TRANSPORTATION

**DRIVEWAY DETAILS**  
DISTANCE BETWEEN ROW AND FACE OF CURB < 15' (4.5 m)

REVISIONS	
NAME	DATE
R. SHAH	11/06/95
J. POLLASTRINI	08/12/96
J. POLLASTRINI	12/14/96
A. ABBAS	03/21/97
T. HOLZ	04/08/97
M. GOMEZ	04/06/01
P. LOFLEUR	04/15/03
R. BORO	01/01/07

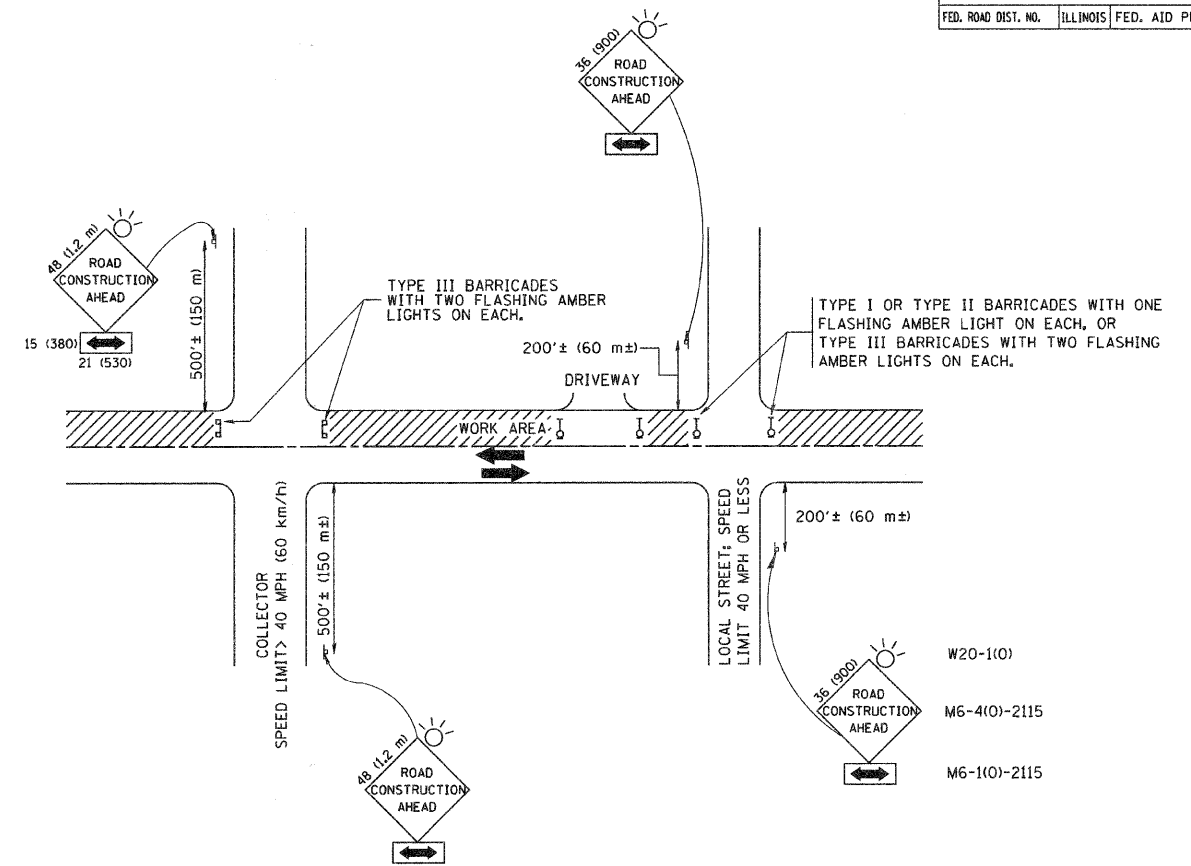
SCALE: VERT. NONE  
HORIZ.

DRAWN BY  
CHECKED BY

PLOT DATE = 3/5/2007  
FILE NAME = K:\driveway\dw02.dgn  
PLOT SCALE = 1/8"=1'-0"  
USER NAME = bborro



F.A. RTE.	SECTION	COUNTY	TOTAL SHEETS	SHEET NO.
09-00949-00-6M		COOK	16	9
STA.		TO STA.		
FED. ROAD DIST. NO.	ILLINOIS	FED. AID PROJECT		



TRAFFIC CONTROL AND PROTECTION FOR SIDE ROADS, INTERSECTIONS, AND DRIVEWAYS

NOTES:

A. FOR NO LANE RESTRICTION ON THE SIDE ROAD OR DRIVEWAYS

1. SIDE ROAD WITH A SPEED LIMIT OF 40 MPH (60 km/h) OR LESS AS SHOWN ON THE DRAWING AND AS DIRECTED BY THE ENGINEER:
  - a) ONE ROAD CONSTRUCTION AHEAD SIGN 36 x 36 (900x900) WITH A FLASHER AND FLAG MOUNTED ON IT APPROXIMATELY 200' (60 m) IN ADVANCE OF THE MAIN ROUTE.
  - b) THE CLOSED PORTION OF THE MAIN ROUTE SHALL BE PROTECTED BY BLOCKING WITH TYPE I, TYPE II OR TYPE III BARRICADES, 1/3 OF THE CROSS SECTION OF THE CLOSED PORTION.
2. SIDE ROAD WITH A SPEED LIMIT GREATER THAN 40 MPH (60 km/h) AS SHOWN ON THE DRAWING AND AS DIRECTED BY THE ENGINEER:
  - a) ONE ROAD CONSTRUCTION AHEAD SIGN 48 x 48 (1.2 m x 1.2 m) WITH A FLASHER MOUNTED ON IT APPROXIMATELY 500' (150 m) IN ADVANCE OF THE MAIN ROUTE.
  - b) THE CLOSED PORTION OF THE MAIN ROUTE SHALL BE PROTECTED BY BLOCKING WITH TYPE III BARRICADES, 1/2 OF THE CROSS SECTION OF THE CLOSED PORTION.
3. WHEN THE SIDE ROAD LIES BETWEEN THE BEGINNING OF THE MAINLINE SIGNING AND THE WORK ZONE, A SINGLE HEADED ARROW (M6-1) SHALL BE USED IN LIEU OF THE DOUBLE HEADED ARROW (M6-4).

B. FOR A LANE CLOSURE ON A SIDE ROAD OR DRIVEWAY:

USE APPLICABLE PORTIONS OF THE TYPICAL APPLICATION OF TRAFFIC CONTROL DEVICES (STD. 701501, STD. 701606 OR THE APPROPRIATE STANDARD). THE SPACING OF SIGNS AND BARRICADES SHALL BE ADJUSTED FOR FIELD CONDITIONS AS DIRECTED BY THE ENGINEER. THE DIRECTIONAL ARROW SHALL BE COVERED OR REMOVED WHEN NO LONGER CONSISTENT WITH THE SIDE ROAD LANE CLOSURE.

C. ADVANCE WARNING SIGNS ARE TO BE OMITTED ON DRIVEWAY UNLESS OTHERWISE NOTED.

D. THE TRAFFIC CONTROL AND PROTECTION FOR SIDE ROADS, INTERSECTIONS, AND DRIVEWAYS SHALL BE INCIDENTAL TO THE COST OF SPECIFIED TRAFFIC CONTROL STANDARDS OR ITEMS.

All dimensions are in millimeters (inches) unless otherwise shown.

REVISIONS	
NAME	DATE
LHA	6/89
T. RAMMACHER	09/08/94
J. OBERLE	10/18/95
A. HOUSEH	03/06/96
A. HOUSEH	10/15/96
T. RAMMACHER	01/06/00

ILLINOIS DEPARTMENT OF TRANSPORTATION  
 TRAFFIC CONTROL AND PROTECTION  
 FOR  
 SIDE ROADS, INTERSECTIONS, AND  
 DRIVEWAYS

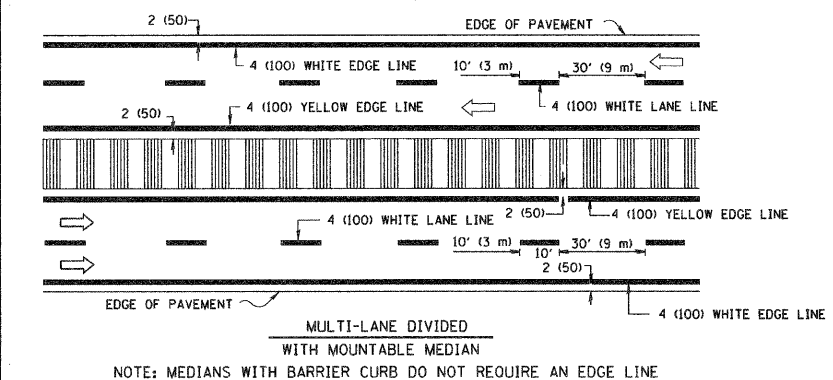
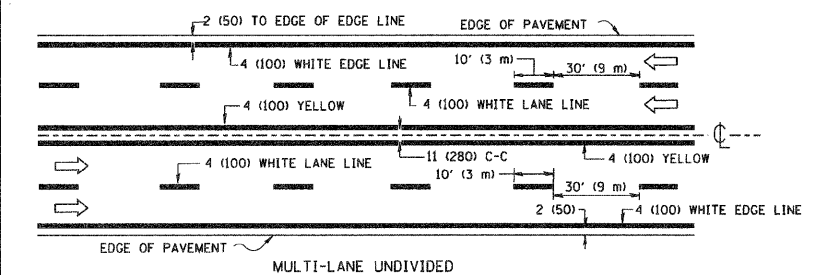
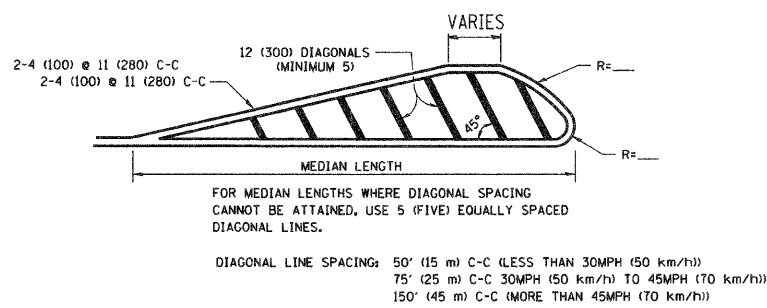
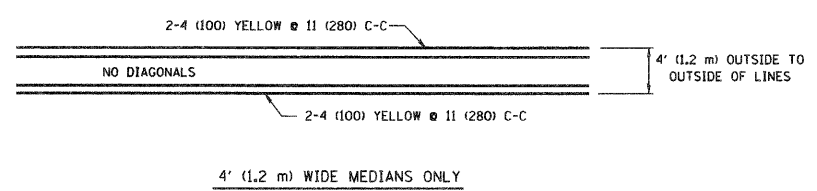
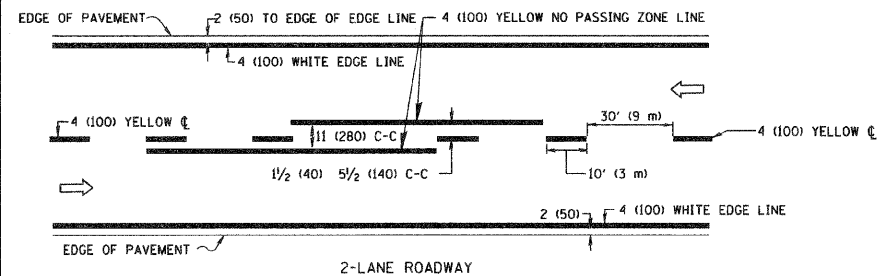
SCALE: NONE

DRAWN BY

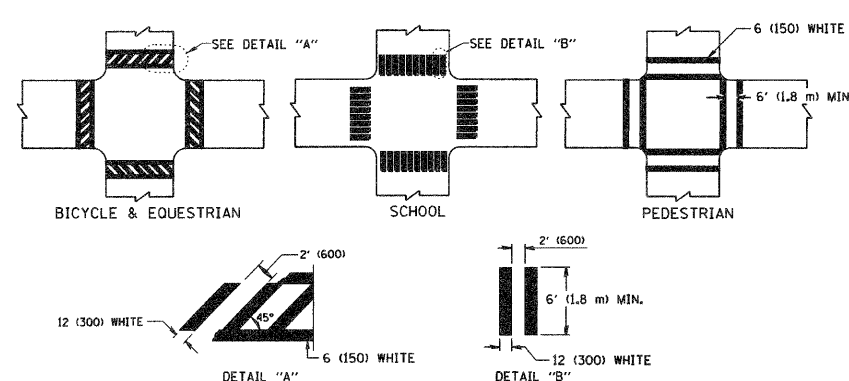
CHECKED BY

TC-10

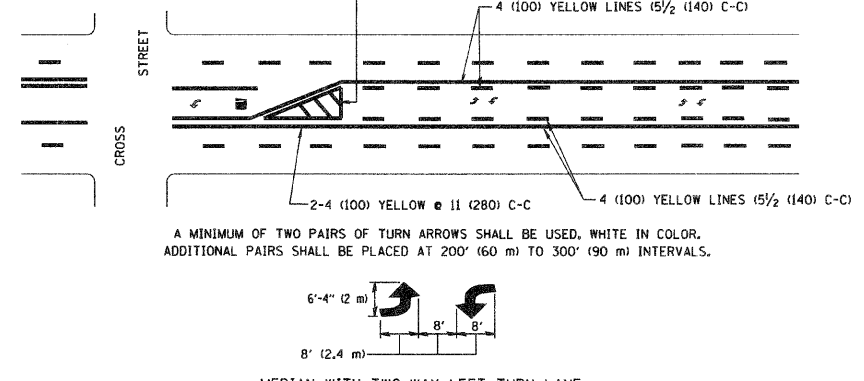
F.A.D. RTE.	SECTION	COUNTY	TOTAL SHEETS	SHEET NO.
	03-00040-00-SW	COOK	16	10
STA.		TO STA.		
FED. ROAD DIST. NO.		ILLINOIS FED. AID PROJECT		



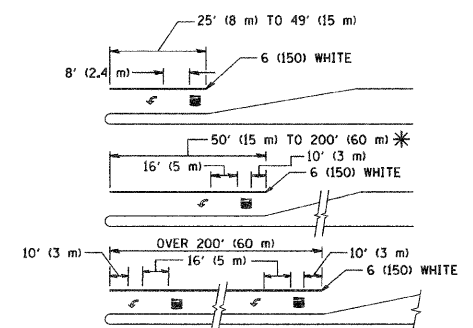
TYPICAL LANE AND EDGE LINE MARKING



TYPICAL CROSSWALK MARKING



TYPICAL PAINTED MEDIAN MARKING

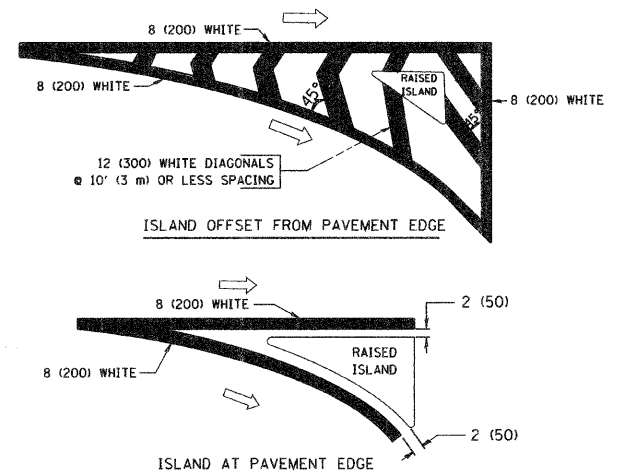


FULL SIZE LETTERS 8" (2.4 m) AND ARROWS SHALL BE USED.  
\* AREA = 15.6 SQ. FT. (1.5 m<sup>2</sup>) ; \*\* AREA = 20.8 SQ. FT. (1.9 m<sup>2</sup>)

\* TURN LANES IN EXCESS OF 400' (120 m) IN LENGTH MAY HAVE AN ADDITIONAL SET OF ARROW - "ONLY" INSTALLED MIDWAY BETWEEN THE OTHER TWO SETS OF ARROW - "ONLY".

TYPICAL LEFT (OR RIGHT) TURN LANE

TYPICAL TURN LANE MARKING



TYPICAL ISLAND MARKING

TYPE OF MARKING	WIDTH OF LINE	PATTERN	COLOR	SPACING / REMARKS
CENTERLINE ON 2 LANE PAVEMENT	4 (100)	SKIP-DASH	YELLOW	10' (3 m) LINE WITH 30' (9 m) SPACE
CENTERLINE ON MULTI-LANE UNDIVIDED PAVEMENT	2 @ 4 (100)	SOLID	YELLOW	11 (280) C-C
NO PASSING ZONE LINES: FOR ONE DIRECTION FOR BOTH DIRECTIONS	4 (100) 2 @ 4 (100)	SOLID SOLID	YELLOW YELLOW	5 1/2 (140) C-C FROM SKIP-DASH CENTERLINE 11 (280) C-C OMIT SKIP-DASH CENTERLINE BETWEEN
LANE LINES	4 (100) 5 (125) ON FREEWAYS	SKIP-DASH SKIP-DASH	WHITE WHITE	10' (3 m) LINE WITH 30' (9 m) SPACE
DOTTED LINES (EXTENSIONS OF CENTER, LANE OR TURN LANE MARKINGS)	SAME AS LINE BEING EXTENDED	SKIP-DASH	SAME AS LINE BEING EXTENDED	2' (600) LINE WITH 6' (1.8 m) SPACE
EDGE LINES	4 (100)	SOLID	YELLOW-LEFT WHITE-RIGHT	OUTLINE MOUNTABLE MEDIANS IN YELLOW; EDGE LINES ARE NOT USED NEXT TO BARRIER CURB
TURN LANE MARKINGS	6 (150) LINE; FULL SIZE LETTERS & SYMBOLS 8" (2.4m)	SOLID	WHITE	SEE TYPICAL TURN LANE MARKING DETAIL
TWO WAY LEFT TURN MARKING	2 @ 4 (100) EACH DIRECTION 8' (2.4m) LEFT ARROW	SKIP-DASH AND SOLID IN PAIRS	YELLOW WHITE	10' (3 m) LINE WITH 30' (9 m) SPACE FOR SKIP-DASH; 5 1/2 (140) C-C BETWEEN SOLID LINE AND SKIP-DASH LINE SEE TYPICAL TWO-WAY LEFT TURN MARKING DETAIL
CROSSWALK LINES (PEDESTRIAN) A. DIAGONALS (BIKE & EQUESTRIAN) B. LONGITUDINAL BARS (SCHOOL)	2 @ 6 (150) 12 (300) @ 45° 12 (300) @ 90°	SOLID SOLID SOLID	WHITE WHITE WHITE	NOT LESS THAN 6' (1.8 m) APART 2' (600) APART 2' (600) APART SEE TYPICAL CROSSWALK MARKING DETAILS.
STOP LINES	24 (600)	SOLID	WHITE	PLACE 4' (1.2 m) IN ADVANCE OF AND PARALLEL TO CROSSWALK, IF PRESENT. OTHERWISE, PLACE AT DESIRED STOPPING POINT, PARALLEL TO CROSSROAD CENTERLINE, WHERE POSSIBLE
PAINTED MEDIANS	2 @ 4 (100) WITH 12 (300) DIAGONALS @ 45° NO DIAGONALS USED FOR 4' (1.2 m) WIDE MEDIANS	SOLID	YELLOW; TWO WAY TRAFFIC WHITE; ONE WAY TRAFFIC	11 (280) C-C FOR THE DOUBLE LINE SEE TYPICAL PAINTED MEDIAN MARKING.
GORE MARKING AND CHANNELIZING LINES	8 (200) WITH 12 (300) DIAGONALS @ 45°	SOLID	WHITE	DIAGONALS: 15' (4.5 m) C-C (LESS THAN 30MPH (50 km/h)) 20' (6 m) C-C 30MPH (50 km/h) TO 45MPH (70 km/h) 30' (9 m) C-C (OVER 45MPH (70 km/h))
RAILROAD CROSSING	24 (600) TRANSVERSE LINES; "RR" 15' 6" (4.8 m) LETTERS; 16 (400) LINE FOR "X"	SOLID	WHITE	SEE STATE STANDARD 780001 AREA OF: "R": 3.6 SQ. FT. (0.33 m <sup>2</sup> ) EACH "X": 54.0 SQ. FT. (5.0 m <sup>2</sup> )
SHOULDER DIAGONALS	12 (300) @ 45°	SOLID	WHITE - RIGHT YELLOW - LEFT	50' (15 m) C-C (LESS THAN 30MPH (50 km/h)) 75' (25 m) C-C 30 MPH (50 km/h) TO 45MPH (70 km/h) 150' (45 m) C-C (OVER 45MPH (70 km/h))

FOR FURTHER DETAILS ON PAVEMENT MARKING REFER TO STANDARD SPECIFICATIONS FOR ROAD AND BRIDGE CONSTRUCTION AND STATE STANDARD 780001.

All dimensions are in inches (millimeters) unless otherwise shown.

REVISIONS	
NAME	DATE
EVERS	03-19-90
T. RAMMACHER	10-27-94
ALEX HOUSEH	10-09-96
ALEX HOUSEH	10-17-96
T. RAMMACHER	01-06-00

ILLINOIS DEPARTMENT OF TRANSPORTATION

DISTRICT ONE

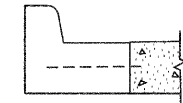
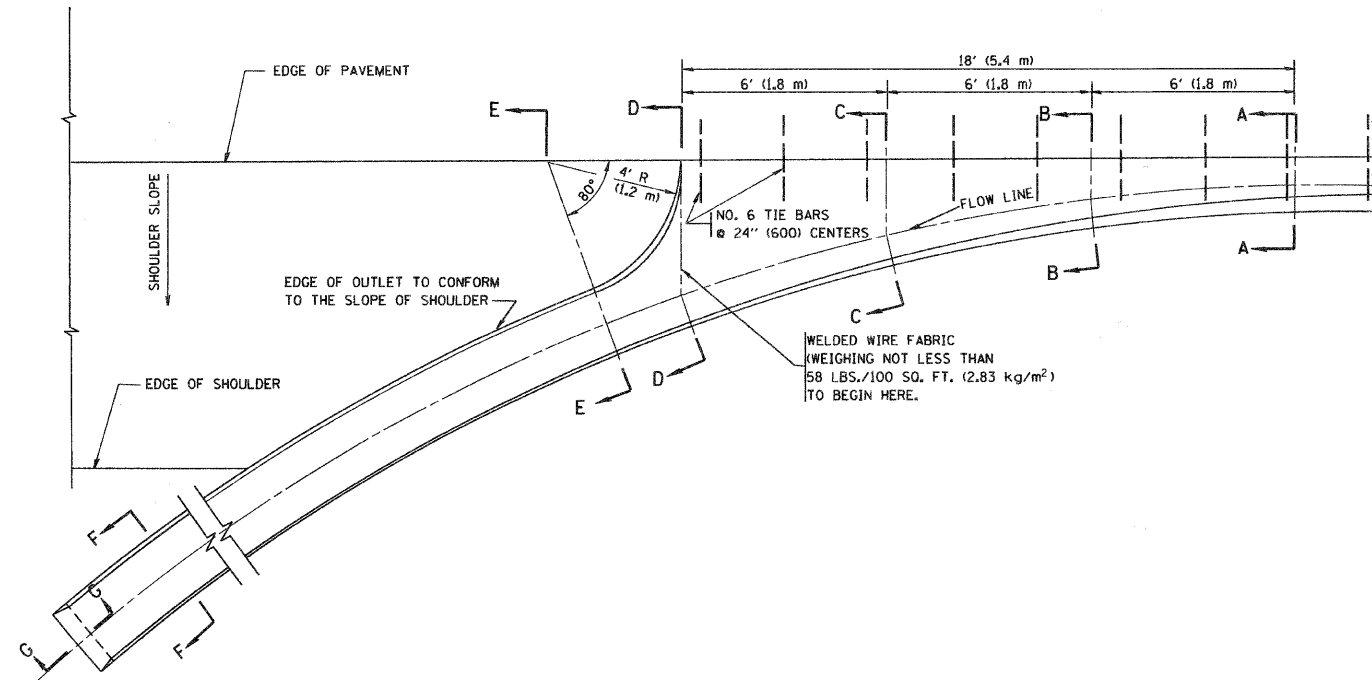
TYPICAL PAVEMENT MARKINGS

SCALE: NONE

DRAWN BY CADD

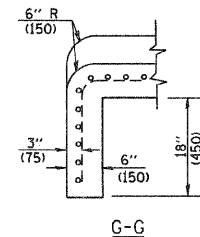
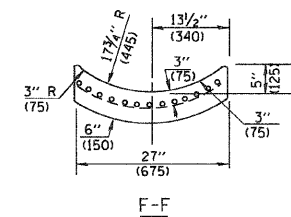
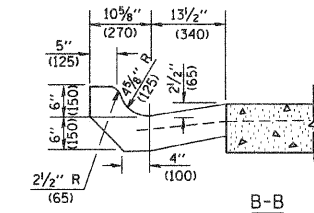
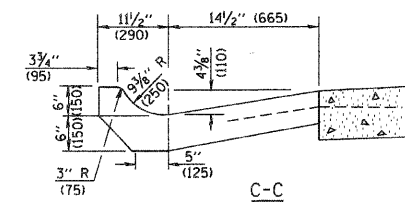
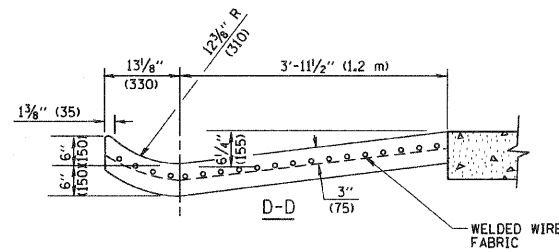
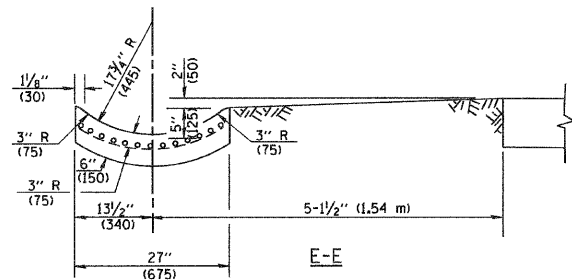
CHECKED BY

TC-13



A-A \*

\* DIMENSIONS OF THE CURB & GUTTER AT SECTION A-A ARE SHOWN ON STATE STANDARD 606001. FOR DETAILS OF OUTLET FOR CONCRETE CURB & GUTTER, TYPE B-6.24 (B-15.60) SEE STATE STANDARD 606006.



**GENERAL NOTES**

GUTTER OUTLET SHALL BE TIED TO THE PAVEMENT IN ACCORDANCE WITH DETAILS FOR LONGITUDINAL CONSTRUCTION JOINT SHOWN ON STANDARD 420001.

TIE BARS SHALL BE NO. 20 (NO.6) AT 24" (600) CENTERS UNLESS OTHERWISE SHOWN.

IF THE AVERAGE GRADE OF PAVEMENT FOR THE DISTANCE FROM SECTION A-A TO D-D EXCEEDS 2%, THIS DISTANCE SHALL BE INCREASED 6' (1.8 m) FOR EACH 1% INCREASE IN GRADE.

**QUANTITIES**

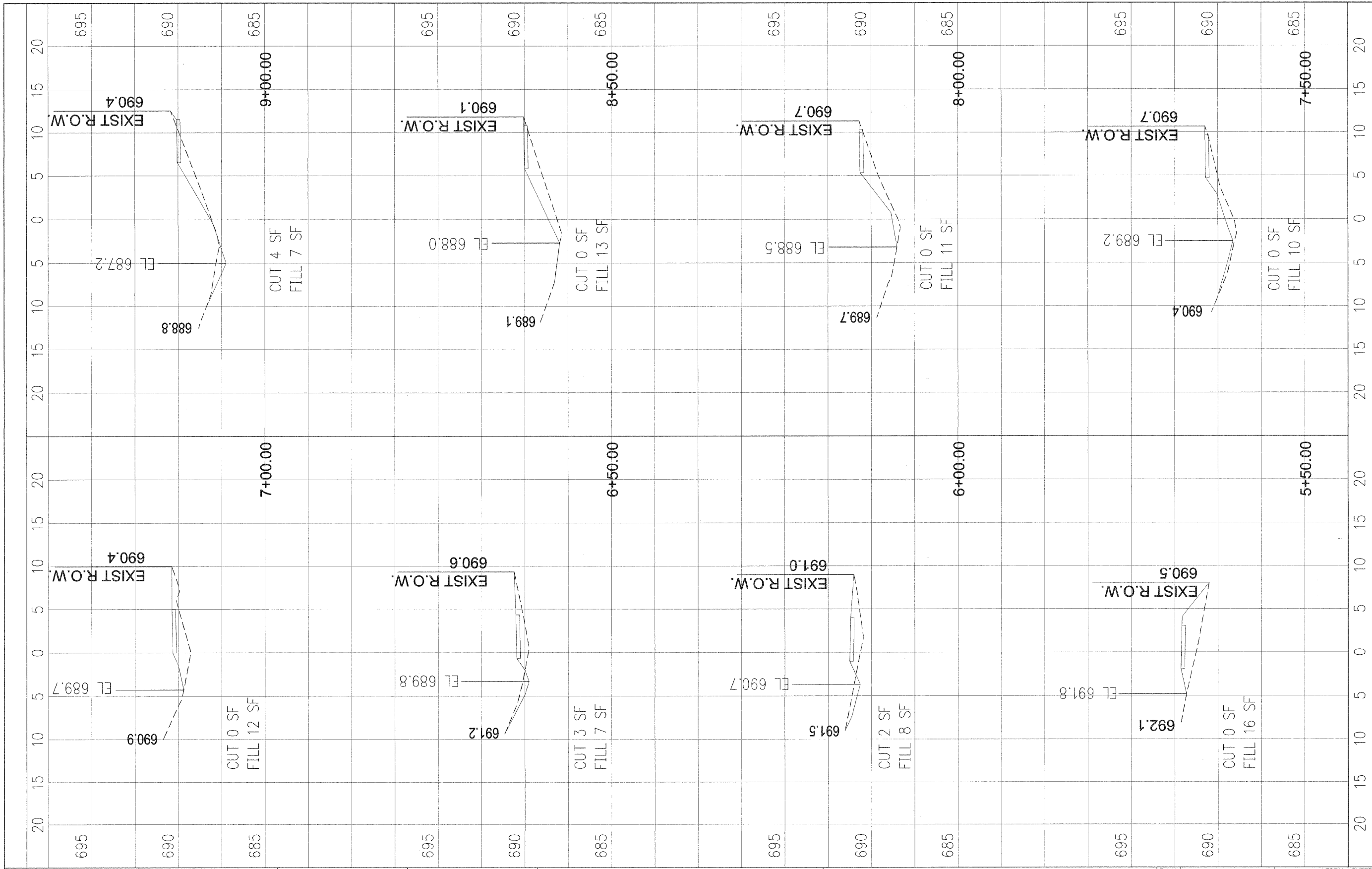
FOR SECTION A-A TO E-E AND CURTAIN WALL = 1.25 CU. YDS. (0.96 m<sup>3</sup>) CLASS SI CONCRETE (OUTLET) FOR 9" (225) PAV'T.  
 1.27 CU. YDS. (0.96 m<sup>3</sup>) CLASS SI CONCRETE (OUTLET) FOR 10" (250) PAV'T.  
 FOR SECTION F-F = 0.045 CU. YDS. (0.03 m<sup>3</sup>) CLASS SI CONCRETE PER FT. (m).

ALL DIMENSIONS ARE IN INCHES (MILLIMETERS) UNLESS OTHERWISE SHOWN.

FILE NAME = W:\diststd\22x34\bd03.dgn	USER NAME = goglianobt	DESIGNED - M. DE YONG	REVISED - R. SHAH 09-09-94	<b>STATE OF ILLINOIS DEPARTMENT OF TRANSPORTATION</b>	<b>OUTLET FOR CONCRETE CURB AND GUTTER</b>			F.A. -	SECTION	COUNTY	TOTAL SHEETS	SHEET NO.
	PLOT SCALE = 50.0000' / IN.	DRAWN -	REVISED - R. SHAH 10-25-94		09-00040-00-SW	COOK	16	11				
PLOT DATE = 1/4/2008	CHECKED -	REVISED - E. GOMEZ 12-21-00	BD600-01		(BD-03)	CONTRACT NO.	63253					
DATE = 08-04-86	REVISD -		FED. ROAD DIST. NO. 1		ILLINOIS	FED. AID PROJECT						
					SCALE: NONE	SHEET NO. 1 OF 1 SHEETS	STA. TO STA.					

PLAN	REVISIONS	DATE
NO. _____	BY _____	_____
NOTE BOOK _____	PLOTTED _____	
NO. _____	REVISIONS _____	
	FILE NAME _____	

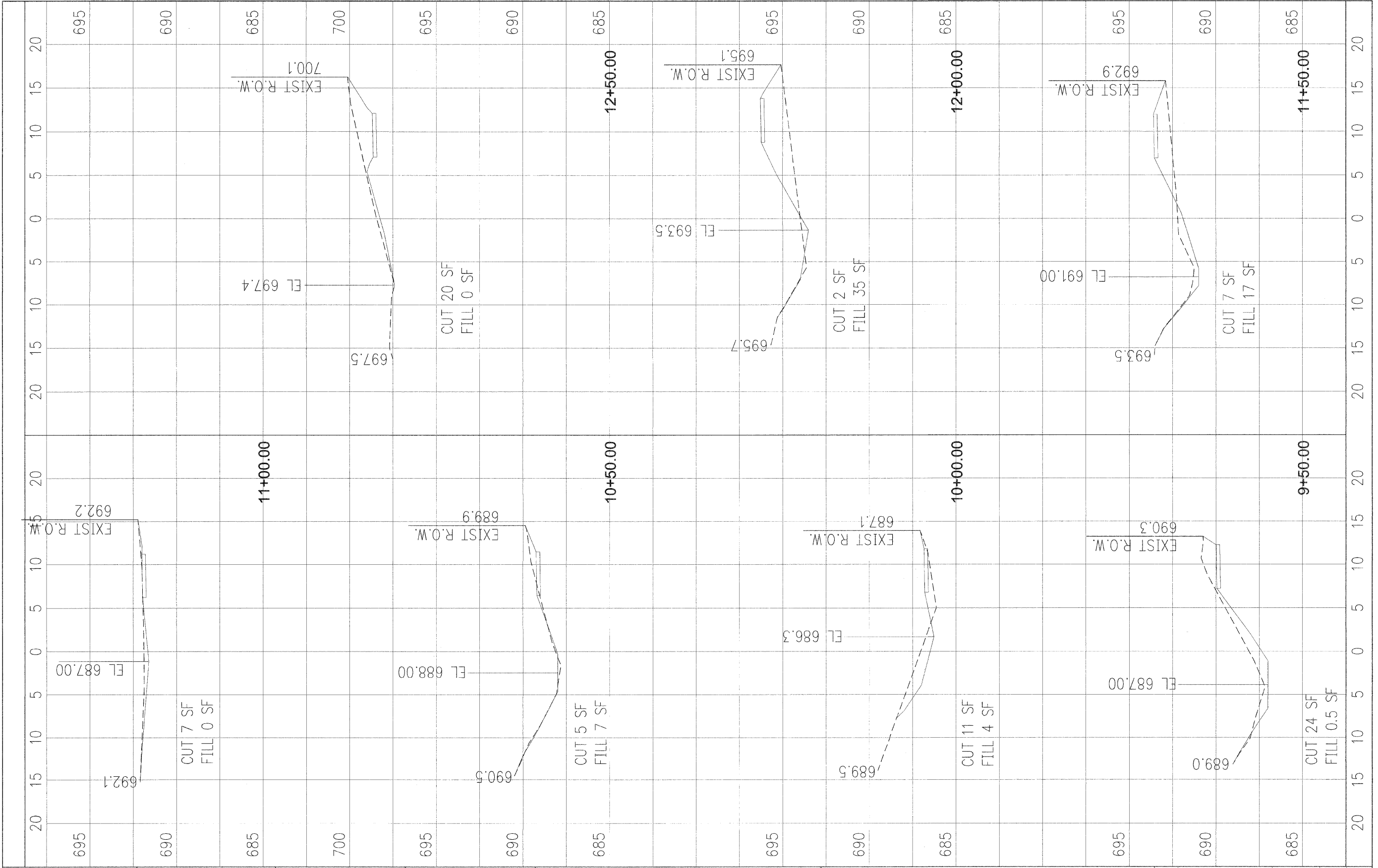
PROFILE	REVISIONS	DATE
NO. _____	BY _____	_____
NOTE BOOK _____	PLOTTED _____	
NO. _____	REVISIONS _____	
	FILE NAME _____	



FILE NAME =	USER NAME =	DESIGNED --	REVISED --	<b>STATE OF ILLINOIS DEPARTMENT OF TRANSPORTATION</b>	<b>CROSS SECTIONS</b>	F.A.U. RTE. =	SECTION =	COUNTY =	TOTAL SHEETS =	SHEET NO. =
	PLOT SCALE =	DRAWN --	REVISED --			09-00040-00-SW	COOK	16	12	
	PLOT DATE =	CHECKED --	REVISED --			COUNTY LINE ROAD (CH W19) SIDEWALK	CONTRACT NO. 63253			
		DATE --	REVISED --			FED. ROAD DIST. NO. 1 ILLINOIS FED. AID PROJECT				

PLAN	SURVEYED	BY	DATE
NOTE BOOK	GRADES CHECKED		
NO.	STRUCTURE	NOTATION CHNG	

PROFILE	SURVEYED	BY	DATE
NOTE BOOK	GRADES CHECKED		
NO.	STRUCTURE	NOTATION CHNG	



FILE NAME =	USER NAME =	DESIGNED --	REVISED --
		DRAWN --	REVISED --
		CHECKED --	REVISED --
		DATE --	REVISED --

PLOT SCALE =	CHECKED --	REVISED --
PLOT DATE =	DATE --	REVISED --

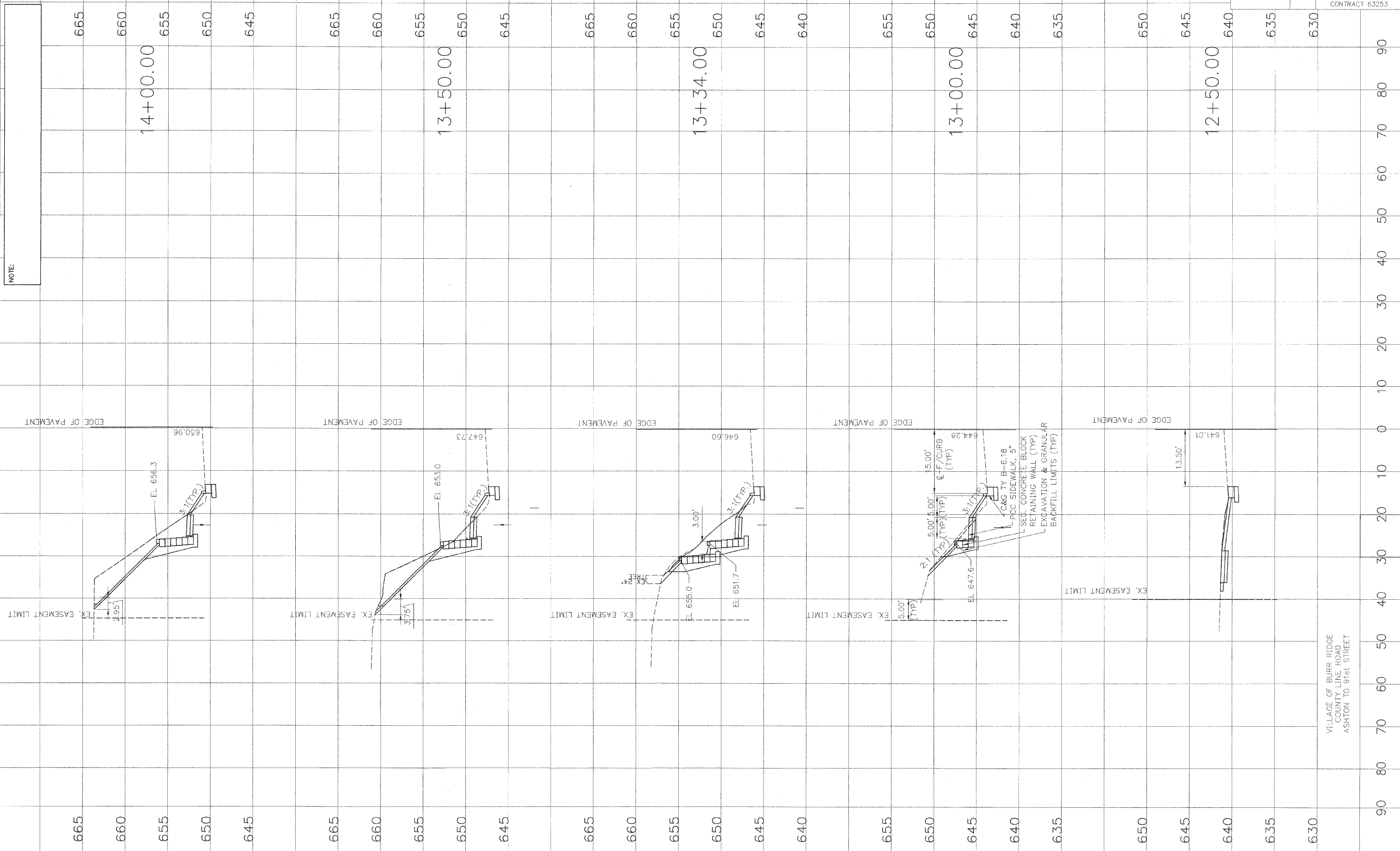
**STATE OF ILLINOIS  
DEPARTMENT OF TRANSPORTATION**

**CROSS SECTIONS**

SCALE: \_\_\_\_\_

F.A.U. RTE.	SECTION	COUNTY	TOTAL SHEETS	SHEET NO.
-	09-00040-00-SW	COCK	16	13
COUNTY LINE ROAD (CH W19) SIDEWALK			CONTRACT NO. 63253	
FED. ROAD DIST. NO. 1 ILLINOIS FED. AID PROJECT				

F.A. R.T.E.	SECTION	COUNTY	TOTAL SHEETS	SHEET NO.
-	09-00040-00-SW	COOK	16	14
STA. 12+50.00		TO STA. 14+00.00		
CONTRACT 63253				

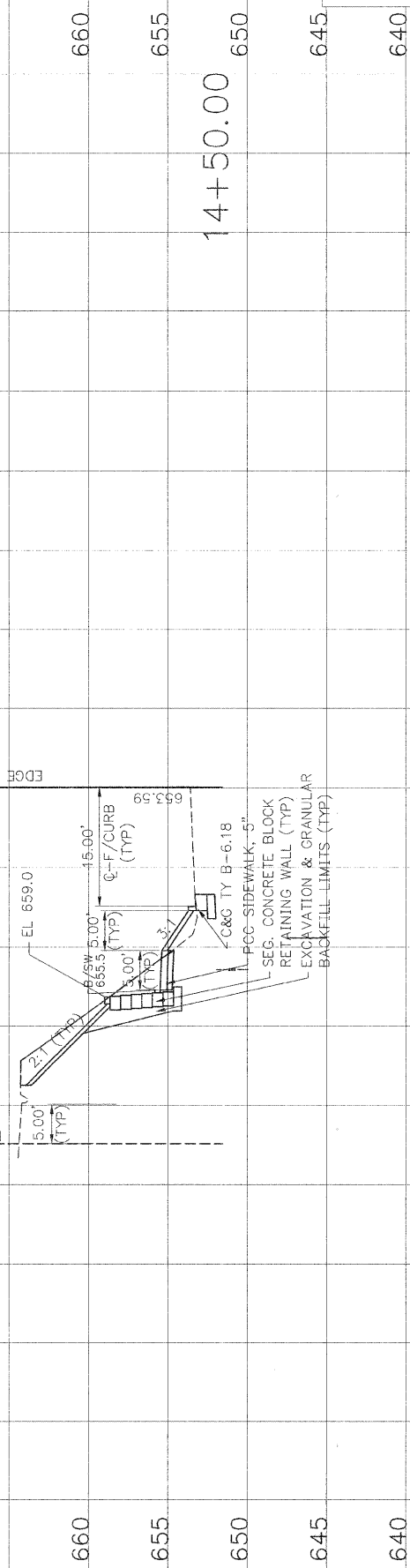
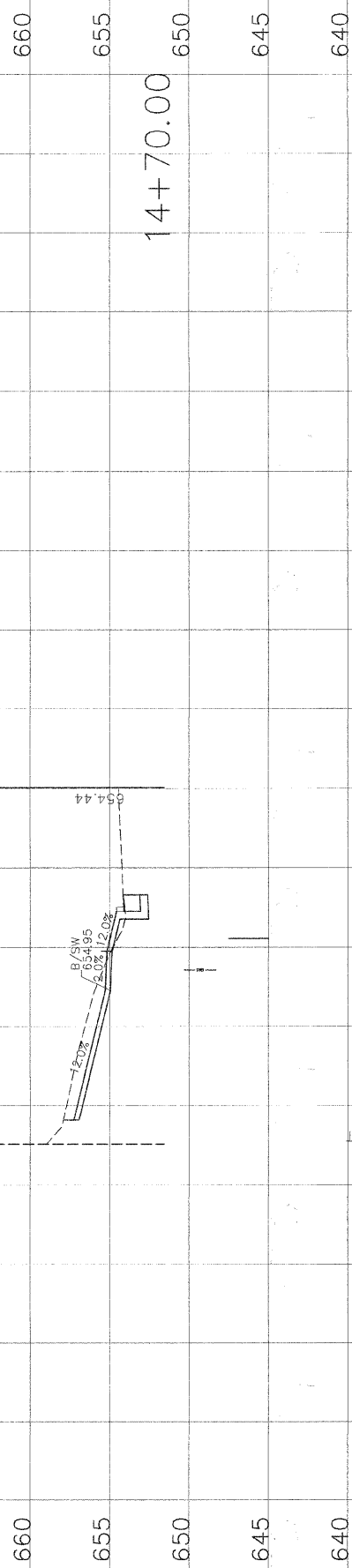
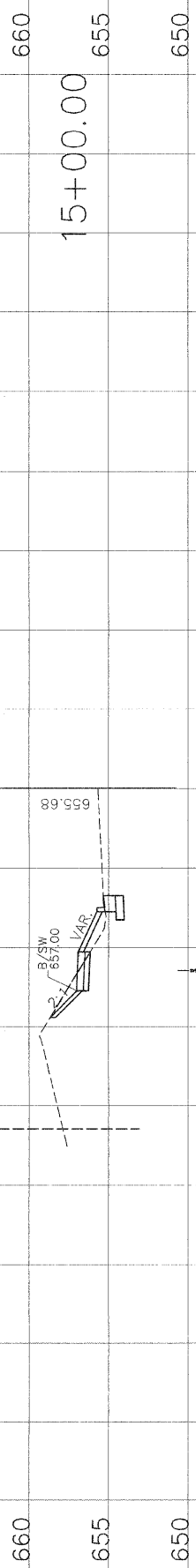


NOTE

VILLAGE OF BURR RIDGE  
 COUNTY LINE ROAD  
 ASHTON TO 91st STREET

F.A. RITE.	SECTION	COUNTY	TOTAL SHEET NO.
-	09-00040-00-SW	COOK	16 15
STA. 14+50.00		TO STA. 15+50.00	
CONTRACT 63253			

NOTE:



VILLAGE OF BURR RIDGE  
COUNTY LINE ROAD  
ASHTON TO 91st STREET

90 80 70 60 50 40 30 20 10 0 10 20 30 40 50 60 70 80 90

F.A. R.I.E.	SECTION	COUNTY	TOTAL SHEET NO.
-	09-00040-00-SW	COOK	16 16
STA. 16+00.00		TO STA. 17+00.00	
CONTRACT 63253			

NOTE:

EDGE OF PAVEMENT

660  
17+00.00  
655  
650

EX. EASEMENT LIMIT

660  
655  
650

EDGE OF PAVEMENT

660  
16+50.00  
655  
650  
645  
640

EX. EASEMENT LIMIT

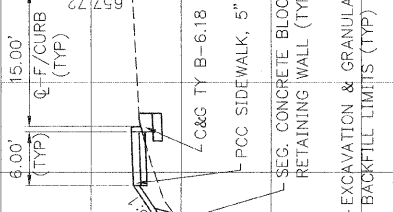
660  
655  
650  
645  
640

EDGE OF PAVEMENT

660  
655  
650  
16+00.00  
645  
640

EX. EASEMENT LIMIT

660  
655  
650  
645  
640



VILLAGE OF BURR RIDGE  
COUNTY LINE ROAD  
ASHTON TO 91st STREET

90 80 70 60 50 40 30 20 10 0 10 20 30 40 50 60 70 80 90