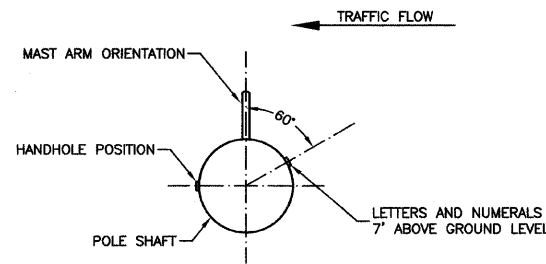
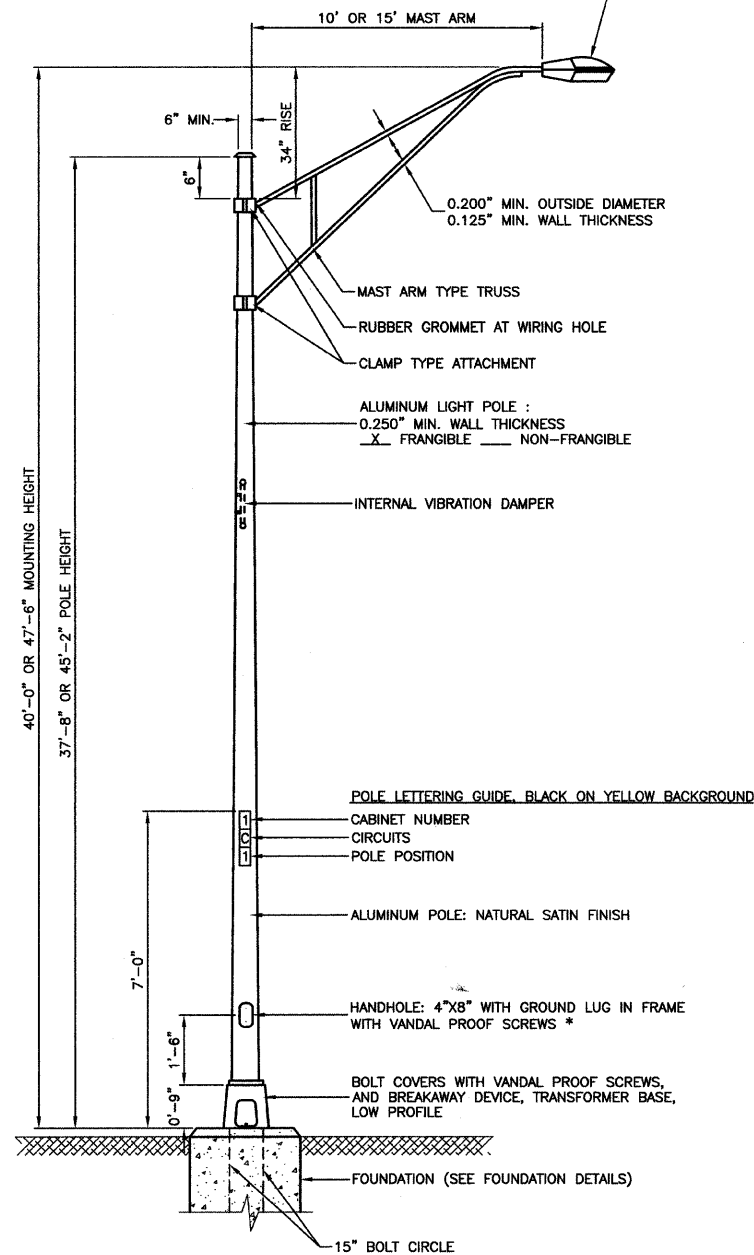


LUMINAIRE:
 400 WATT HIGH PRESSURE SODIUM LAMP
 240 VOLT BALLAST
 I.E.S. TYPE: MC III LIGHT DISTRIBUTION
 LENS TYPE: FLAT
 INITIAL LAMP LUMENS: 51,000
 LAMP LIFE: 24,000 HOURS

OR
 250 WATT HIGH PRESSURE SODIUM LAMP
 240 VOLT BALLAST
 I.E.S. TYPE: MC III LIGHT DISTRIBUTION
 LENS TYPE: FLAT GLASS
 INITIAL LAMP LUMENS: 28,000
 LAMP LIFE: 24,000 HOURS



POSITION OF HANDHOLE AND
 NUMERALS ON POLE

NOTES:

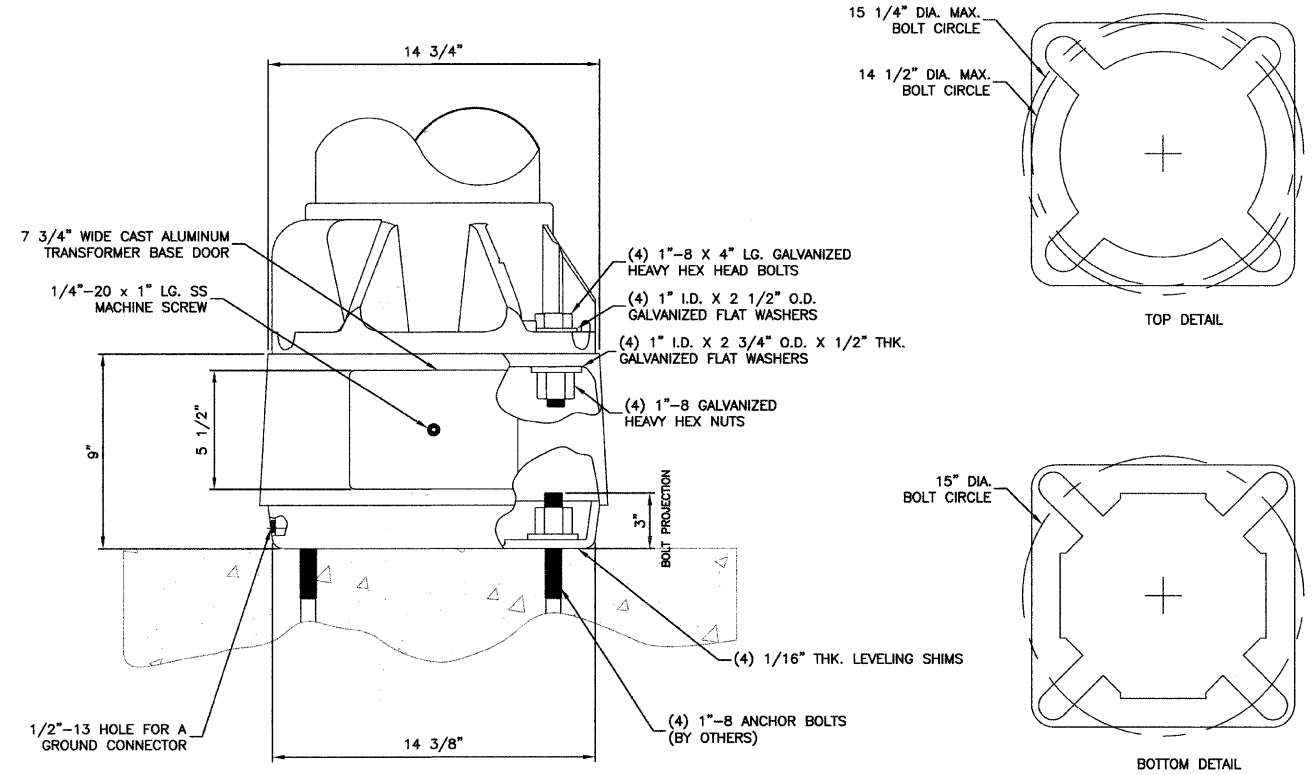
- THE LIGHTING UNITS SHALL MEET AASHTO DESIGN CRITERIA. DESIGN FOR 90 M.P.H. WIND WITH 30% GUST AND 75 POUND LUMINAIRE HAVING AN E.P.A. OF 1.6 SQ. FT. AND PROPER ICE LOADING.
- ALUMINUM ALLOY 6063-T6 SHALL BE USED.

* - BUTTON HEAD SOCKET SET SCREW TYPE OF SCREWS PREFERRED FOR THIS APPLICATION

TYPICAL POLE INSTALLATION

IMPORTANT NOTE:

TRANSFORMER BASE AND LIGHTPOLE TO BE LEVELED AS ONE UNIT. USING LEVELING SHIMS IF REQUIRED.



BREAKAWAY TRANSFORMER BASE DETAIL*

* EXISTING BREAKAWAY BASES TO BE RE-USED WHERE POSSIBLE. ENGINEER WILL DETERMINE IF BASES CAN BE RE-USED AFTER DISASSEMBLY.



FILE NAME = 06659-LGHT-02 - P01	USER NAME =	DESIGNED -- MRS	REVISED --	STATE OF ILLINOIS DEPARTMENT OF TRANSPORTATION	US ROUTE 6 (162ND STREET) & WAUSAU AVENUE INTERSECTION IMPROVEMENTS LIGHTING DETAILS	F.A.P. RTE.	SECTION	COUNTY	TOTAL SHEETS	SHEET NO.	
	CHECKED -- PKB	REVISED --				351	09-00086-00-CH	COOK	43	17	
PLOT SCALE =	DRAWN -- PS	REVISED --				CONTRACT NO. 63261					
PLOT DATE = 8-19-09	CHECKED -- AG	REVISED --				SCALE: NONE SHEET NO. 17 OF 43 SHEETS STA. TO STA. FED. ROAD DIST. NO. 1 ILLINOIS FED. AID PROJECT M-9003(330)					