

FAU RTE.	SECTION	COUNTY	TOTAL SHEETS	SHEET NO.
2796	09-00031-00-PV	COOK	16	1
STA. 10+00		TO STA. 39+92		
FED. ROAD DIST. NO.		ILLINOIS	FED. AID PROJECT	
CONTRACT NO. 63267				

STATE OF ILLINOIS
DEPARTMENT OF TRANSPORTATION
DIVISION OF HIGHWAYS
**PLANS FOR PROPOSED
FEDERAL AID HIGHWAY**

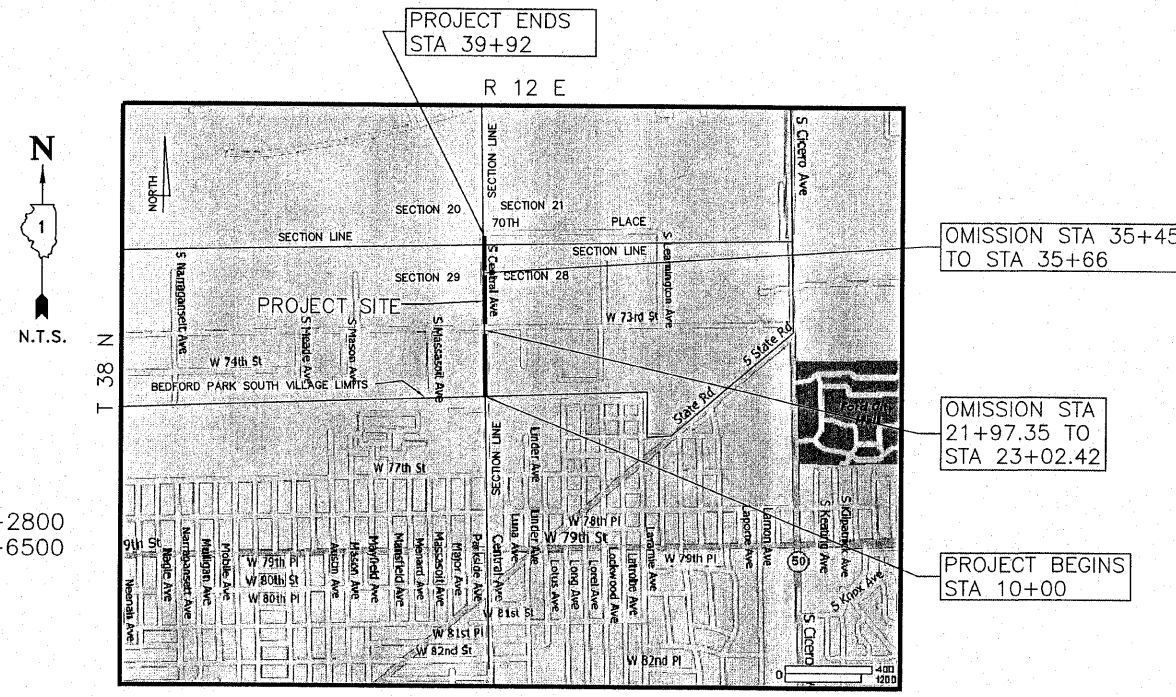
**FAU RTE.2796 (CENTRAL AVENUE)
HOT-MIX ASPHALT RECONSTRUCTION
70th PLACE TO VILLAGE BOUNDARY (RR TRACKS)
SECTION NO. 09-00031-00-PV
PROJECT NO: ARA-9003(387)
JOB NO: C-91-774-09
VILLAGE OF BEDFORD PARK
COOK COUNTY**

INDEX TO SHEETS:

SHEET NO.	DESCRIPTION
1.	COVER SHEET
2.	GENERAL NOTES & LEGEND
3.	SUMMARY OF QUANTITIES & STRUCTURAL DESIGN INFO
4.	TYPICAL SECTIONS
5-10.	PLAN & PROFILE SHEETS
10.	SPECIAL DETAILS
11.	TRAFFIC CONTROL PLAN
12.	PAVEMENT MARKING PLAN
13.	DISTRICT 1 DETAIL-TC10-TRAFFIC CONTROL AND PROTECTION FOR SIDE ROADS
14.	DISTRICT 1 DETAIL-TC13-TYPICAL PAVEMENT MARKINGS
15.	DISTRICT 1 DETAIL-BD24-CURB OR CURB AND GUTTER R&R
16.	DISTRICT 1 DETAIL-BD32-BUTT JOINT AND HMA TAPER DETAIL

HIGHWAY STANDARDS:

000001-05:	STANDARD SYMBOLS, ABBREVIATIONS AND PATTERNS
424001-05:	SIDEWALK RAMPS ACCESSIBLE TO THE HANDICAPPED
602401-02:	MANHOLE, TYPE A
602301-02:	INLET, TYPE A
602001-01:	CATCH BASIN, TYPE A
604001-03:	FRAMES & LIDS, TYPE 1
606001-04:	CONCRETE CURB AND COMBINATION CONCRETE CURB AND GUTTER
701901-01:	TRAFFIC CONTROL DEVICES
780001-02:	TYPICAL PAVEMENT MARKINGS



LOCATION MAP

SOUTH OF 73rd STREET
DESIGN DESIGNATION - 6500 (10) COLLECTOR 0.55(FD-20) S. OF 73rd ST
NORTH OF 73rd STREET
- 2800 (10) LOCAL 1.055(FD-20) N. OF 73rd ST

GROSS LENGTH OF PROJECT 2,992 FEET (0.57 MILES)
NET LENGTH OF PROJECT 2,867 FEET (0.54 MILES)

STATE OF ILLINOIS
DEPARTMENT OF TRANSPORTATION
DIVISION OF HIGHWAYS

APPROVED 8/31/2009
[Signature]
VILLAGE OF BEDFORD PARK, PRESIDENT

PASSED SEPTEMBER 1, 2009
[Signature]
DISTRICT 1 ENGINEER OF LOCAL ROADS & STREETS

RELEASING FOR BID
BASED ON LIMITED
REVIEW SEPTEMBER 1, 2009
[Signature]
DEPUTY DIRECTOR OF HIGHWAYS/REGION 1 ENGINEER

hbe Hoefflerle-Butler Engineering, Inc.
Consulting Civil Engineers - Land Surveyors
PROFESSIONAL DESIGN FIRM LICENSE NO. 194-00019
874 S. ROBERTS ROAD HICKORY HILLS, ILLINOIS 60457
(708) 599-8980 FAX (708) 599-8790

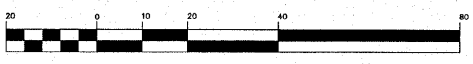
STEPHEN A. LEIBER
38352
REGISTERED
PROFESSIONAL
ENGINEER
OF
ILLINOIS
[Signature]
SIGNATURE
8/31/09
DATE

EXPIRES 11-30-09
(PRINTED BY AUTHORITY OF THE STATE OF ILLINOIS)

MFI FIELD ENGINEER: MELCHOR MANGOBA 1-847-705-4408
CONSULTANT: HOFFERLE BUTLER ENGINEERING, INC. 1-708-599-8980

J.U.L.I.E.
JOINT UTILITY LOCATION FOR EXCAVATION
1-800-892-0123

CONTRACT NO. 63267



ADT
NORTH OF 73rd ST-2800
SOUTH OF 73rd ST-6500



FILE 0039-07-315