

F.A.U. RTE.	SECTION	COUNTY	TOTAL SHEETS	SHEET NO.
3878	09-00022-00-RS	McHENRY	16	1
STA.		TO STA.		
FED. ROAD DIST. NO.		ILLINOIS	FED AID PROJECT	
C-91-622-09			ARA-9003(315)	
CONTRACT No: 63277				

FOR INDEX OF SHEETS, SEE SHEET NO. 2

FOR INDEX OF HIGHWAY STANDARDS, SEE SHEET NO. 2

PROJECT LOCATED IN THE VILLAGE OF FOX RIVER GROVE

STATE OF ILLINOIS
DEPARTMENT OF TRANSPORTATION
DIVISION OF HIGHWAYS

PLANS FOR PROPOSED FEDERAL AID HIGHWAY

F.A.U. ROUTE 3878 ALGONQUIN ROAD

FROM PLUM TREE ROAD (FAU 3879) TO U.S. ROUTE 14 (FAP 0305)

RESURFACING

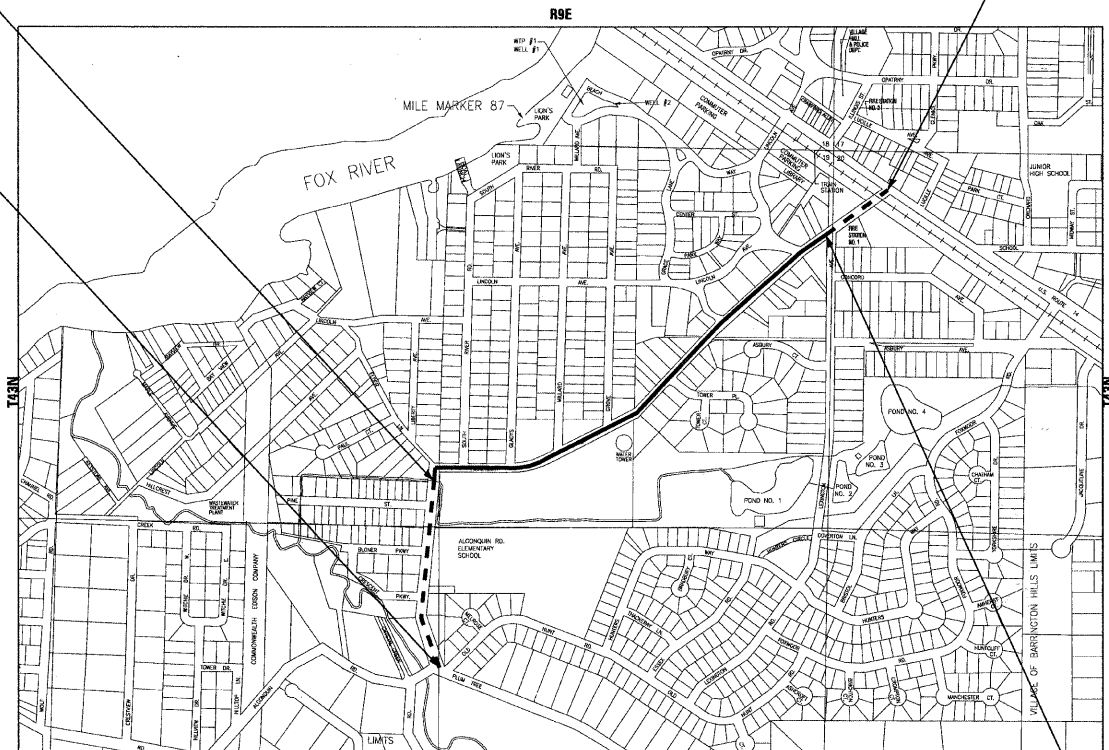
PROJECT No.: ARA-9003(315) SECTION No.: 09-00022-00-RS JOB No: C-91-622-09 VILLAGE OF FOX RIVER GROVE McHENRY COUNTY



PROJECT NUMBER: ARA-9003(315)
F.A.U. ROUTE 3878
ALGONQUIN ROAD
END OMISSION/
BEGIN RESURFACING
STA. 17 + 75

PROJECT NUMBER: ARA-9003(315)
F.A.U. ROUTE 3878
ALGONQUIN ROAD
BEGIN OMISSION
STA. 0 + 00

LOCATION MAP
(NOT TO SCALE)

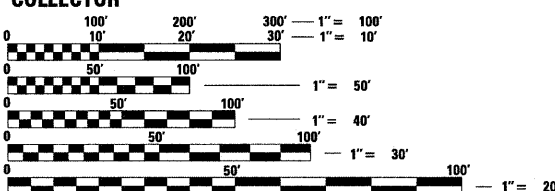


PROJECT NUMBER: ARA-9003(315)
F.A.U. ROUTE 3878
ALGONQUIN ROAD
END OMISSION
STA. 56 + 06



COPYRIGHT 2009, BY BAXTER & WOODMAN, INC.
STATE OF ILLINOIS - PROFESSIONAL DESIGN FIRM
LICENSE NO. - 184-001121 - EXPIRES 4/30/2011

TRAFFIC DATA
ALGONQUIN ROAD
POSTED & DESIGN SPEED LIMIT = 30 MPH
2009 ADT = 3,859
COLLECTOR



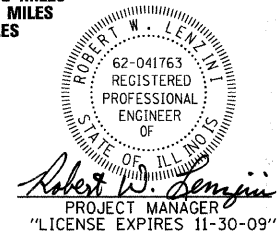
FULL SIZE PLANS HAVE BEEN PREPARED USING STANDARD
ENGINEERING SCALES. REDUCED SIZED PLANS WILL NOT
CONFORM TO STANDARD SCALES. IN MAKING MEASUREMENTS
ON REDUCED PLANS, THE ABOVE SCALES MAY BE USED.

J.U.L.I.E. DESIGN STAGE REQUEST
DIG. No. A0971958



CONTACT JULIE AT 811 OR 800-892-0123
WITH THE FOLLOWING:
COUNTY = McHENRY
CITY-TOWNSHIP = FOX RIVER GROVE-ALGONQUIN
SEC. & 1/4 SEC. NO. = SEC. 19 NE, NW, SW 1/4, T43N-R9E
48 HOURS (2 working days) BEFORE YOU DIG

ALGONQUIN TOWNSHIP
GROSS LENGTH OF IMPROVEMENT = 5,606 LF OR 1.062 MILES
NET LENGTH OF IMPROVEMENT = 3,311 LF OR 0.627 MILES
LENGTH OF OMISSION = 2,295 LF OR 0.435 MILES



PROJECT NUMBER: ARA-9003(315)
F.A.U. ROUTE 3878
ALGONQUIN ROAD
END RESURFACING /
BEGIN OMISSION
STA. 50 + 86

STATE OF ILLINOIS
DEPARTMENT OF TRANSPORTATION
DIVISION OF HIGHWAYS

APPROVED *Art Oster Jr.* 8/6/09
ART OSTER JR.
VILLAGE OF FOX RIVER GROVE, REPRESENTATIVE

PASSED August 31, 2009
Robert W. Lenz
DISTRICT 1 ENGINEER OF LOCAL ROADS AND STREETS

RELEASING FOR BID
BASED ON LIMITED
REVIEW August 26, 2009
Diane M. O'Keefe
DEPUTY DIRECTOR OF
HIGHWAYS, REGION 1 ENGINEER

PRINTED BY THE AUTHORITY
OF THE STATE OF ILLINOIS

COPYRIGHT © 2009 BY BAXTER & WOODMAN, INC.
 STATE OF ILLINOIS - PROFESSIONAL DESIGN FIRM
 LICENSE NO. - 184-001121 - EXPIRES 4/30/2011
 8/23/2009 8:43:57 AM
 Associate Field Engineer Kevin Stallworth, P.E. (847-705-4189)

CONTRACT NO. 63277

Burlington, Wisconsin (Crystal Lake, Illinois) DeKalb, Illinois Itasca, Illinois Mokena, Illinois Grayslake, Illinois Plainfield, Illinois Madison, Wisconsin Chicago, Illinois
262.763.7834 815.459.1260 815.787.3111 630.773.1870 708.560.7070 847.223.5088 815.609.7425 608.347.1542 312.578.0050
(OFFICE WHICH PREPARED PLANS)

B&W PROJECT NO.: 090225 DATE: 08-03-09

SUMMARY OF QUANTITIES

CODE NO.	PAY ITEM	UNIT	CONSTRUCTION CODE I000
35101600	AGGREGATE BASE COURSE, TYPE B 4"	SQ YD	80
40600100	BITUMINOUS MATERIALS (PRIME COAT)	GALLON	1,101
40600300	AGGREGATE (PRIME COAT)	TON	27
40600400	MIXTURE FOR CRACKS, JOINTS AND FLANGEWAYS	TON	5
40600895	CONSTRUCTING TEST STRIP	EACH	1
40600982	HOT-MIX ASPHALT SURFACE REMOVAL - BUTT JOINT	SQ YD	1,214
40603310	HOT-MIX ASPHALT SURFACE COURSE, MIX "C", N50	TON	1,328
42400430	PORTLAND CEMENT CONCRETE SIDEWALK 5 INCH, SPECIAL	SQ FT	567
42400800	DETECTABLE WARNINGS	SQ FT	88
44000157	HOT-MIX ASPHALT SURFACE REMOVAL, 2"	SQ YD	10,969
44000600	SIDEWALK REMOVAL	SQ FT	567
44001700	COMBINATION CONCRETE CURB AND GUTTER REMOVAL AND REPLACEMENT	FOOT	80
44201729	CLASS D PATCHES, TYPE II, 7 INCH	SQ YD	85
44201733	CLASS D PATCHES, TYPE III, 7 INCH	SQ YD	130
44201735	CLASS D PATCHES, TYPE IV, 7 INCH	SQ YD	135
48102100	AGGREGATE WEDGE SHOULDER, TYPE B	TON	369
60266610	VALVE BOXES TO BE ADJUSTED (SPECIAL)	EACH	1
60300310	FRAMES AND LIDS TO BE ADJUSTED (SPECIAL)	EACH	8
67100100	MOBILIZATION	LSUM	1
70101700	TRAFFIC CONTROL AND PROTECTION	LSUM	1
70300100	SHORT-TERM PAVEMENT MARKING	FOOT	2,500
70301000	WORK ZONE PAVEMENT MARKING REMOVAL	SQ FT	275
* 78000200	THERMOPLASTIC PAVEMENT MARKING - LINE 4"	FOOT	11,843
* 78000400	THERMOPLASTIC PAVEMENT MARKING - LINE 6"	FOOT	180
* 78000600	THERMOPLASTIC PAVEMENT MARKING - LINE 12"	FOOT	60
* 78000650	THERMOPLASTIC PAVEMENT MARKING - LINE 24"	FOOT	80
X0322256	TEMPORARY INFORMATION SIGNING	SQ FT	52

* INDICATES SPECIALTY ITEM

COPYRIGHT © 2009 BY BAXTER & WOODMAN, INC.
 STATE OF ILLINOIS - PROFESSIONAL DESIGN FIRM
 LICENSE NO. - 184-0017 EXPIRES 6/30/2011
 60332 ILL

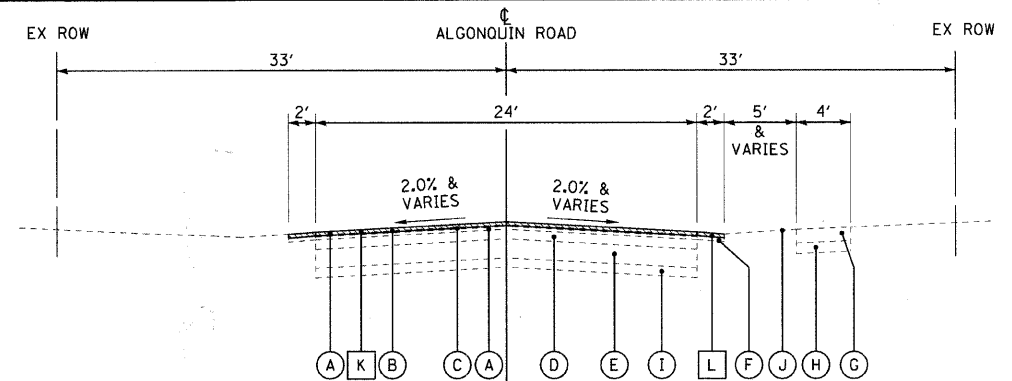


DESIGNED - MWP	REVISED - IDOT REVIEW 06-01-09
DRAWN - KAR	REVISED - IDOT REVIEW 08-03-09
CHECKED - RWL	REVISED -
DATE - 04-15-09	FILE - 090225-S00.shd

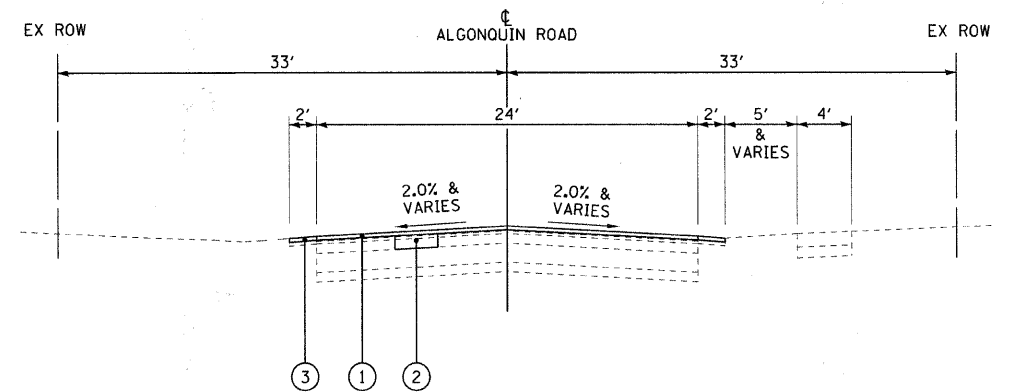
**VILLAGE OF FOX RIVER GROVE, ILLINOIS
ALGONQUIN ROAD ARRA (LAPP)
IMPROVEMENTS**

SUMMARY OF QUANTITIES	
SCALE: NONE	STA. TO STA.

F.A.U. RTE.	SECTION	COUNTY	TOTAL SHEETS	SHEET NO.
3878	09-00022-00-RS	MCHENRY	16	3
FED. ROAD DIST. NO. C-91-622-09			CONTRACT NO. 63277	
ILLINOIS FED. AID PROJECT ARA-9003 (315)				



**EXISTING TYPICAL SECTION
ALGONQUIN ROAD
STA. 17+75 TO STA. 50+86**



**PROPOSED TYPICAL SECTION
ALGONQUIN ROAD
STA. 17+75 TO STA. 50+86**

HOT-MIX ASPHALT MIXTURE REQUIREMENTS NOTES:

1. CONTRACTOR SHALL MILL BEFORE PATCHING.

HOT-MIX ASPHALT MIXTURE REQUIREMENTS

MIXTURE TYPE	VOIDS
RESURFACING	
HOT-MIX ASPHALT SURFACE COURSE, MIX "C", N50 (IL 9.5mm); 2"	4% @ 50 GYR.
PATCHING	
CLASS D PATCHES (HMA BINDER IL-19 mm); TYPE II - IV - 7-INCH	4% @ 70 GYR.
DRIVEWAYS	
HOT-MIX ASPHALT SURFACE COURSE, MIX "C", N50 (IL 9.5 mm); 2"	4% @ 50 GYR.

THE UNIT WEIGHT USED TO CALCULATE ALL HOT-MIX ASPHALT SURFACE MIXTURES IS 112 LBS/SO. YD./IN FOR "AC TYPE" AND "PERCENT RAP" SEE DISTRICT ONE SPECIAL PROVISIONS.

EXISTING LEGEND

- (A) HOT-MIX ASPHALT SURFACE COURSE, 1 1/2"
- (B) AREA REFLECTIVE CRACK CONTROL TREATMENT (PETROMAT)
- (C) HOT-MIX ASPHALT SURFACE COURSE, 1"
- (D) HOT-MIX ASPHALT BINDER COURSE, 5"
- (E) AGGREGATE BASE COURSE, 10"±
- (F) AGGREGATE SHOULDER, 4"±
- (G) SIDEWALK
- (H) AGGREGATE BASE COURSE
- (I) EXISTING SUB-GRADE
- (J) GROUND SURFACE
- (K) HOT-MIX ASPHALT SURFACE REMOVAL, 2"
- (L) AGGREGATE SHOULDER REMOVAL, 2" (INCLUDED IN THE COST OF HMA SURFACE REMOVAL, 2")
- [Hatched Box] ITEM TO BE REMOVED

PROPOSED LEGEND

- (1) HOT-MIX ASPHALT SURFACE COURSE, MIX "C", N50 - 2"
- (2) CLASS D PATCHES, TYPE II - IV, 7-INCH
- (3) AGGREGATE WEDGE SHOULDER, TYPE B

LEGEND NOTES:

1. SIDEWALK REMOVAL AND REPLACEMENT TO BE DETERMINED BY THE ENGINEER, UNLESS OTHERWISE SHOWN.
2. CURB AND GUTTER REMOVAL AND REPLACEMENT TO BE DETERMINED BY THE ENGINEER, UNLESS OTHERWISE SHOWN.

COPYRIGHT © 2009 BY BAXTER & WOODMAN, INC.
 STATE OF ILLINOIS - PROFESSIONAL DESIGN FIRM
 LICENSE NO. 184-00121 - EXPIRES 4/30/2011
 6/27/2009 8:40:25 AM
 \\p01-df-vpr\prj225\24\sh1
 \\cadd-survey\plots\090225_1b
 \\cadd-survey\prj\090225-09\plan\1-090225-TYP.shx

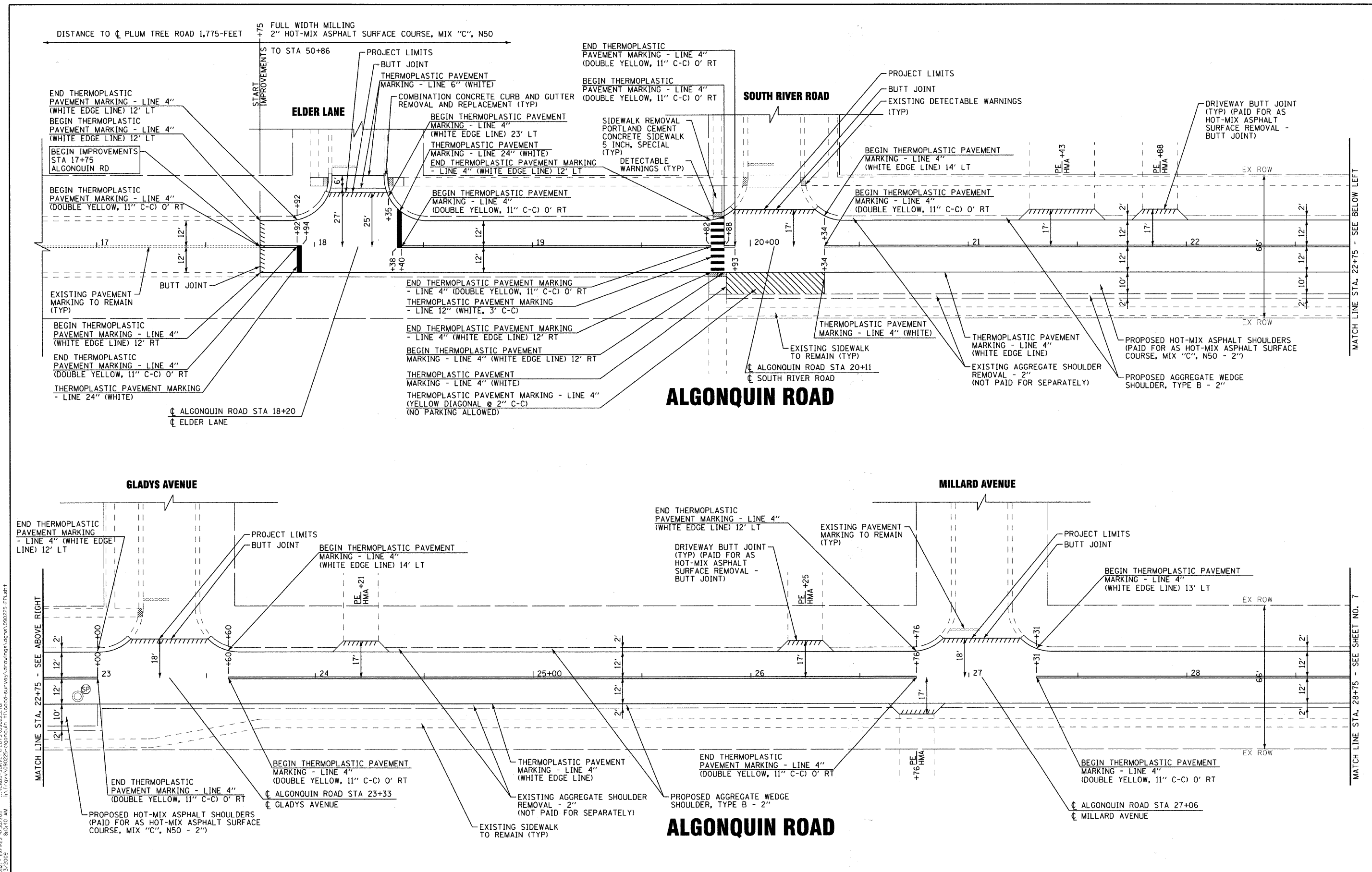


DESIGNED - MWP	REVISED - IDOT REVIEW 06-01-09
DRAWN - KAR	REVISED - IDOT REVIEW 08-03-09
CHECKED - RWL	REVISED -
DATE - 04-15-09	FILE - 090225-TYP.shx

**VILLAGE OF FOX RIVER GROVE, ILLINOIS
ALGONQUIN ROAD ARRA (LAPP)
IMPROVEMENTS**

TYPICAL SECTIONS AND HMA MIXTURE REQUIREMENTS	
SCALE: NONE	STA. TO STA.

F.A.U. RTE.	SECTION	COUNTY	TOTAL SHEETS	SHEET NO.
387B	09-00022-00-RS	MCHEMRY	16	4
FED. ROAD DIST. NO. C-91-622-09			CONTRACT NO. 63277	
ILLINOIS FED. AID PROJECT ARA-9003 (315)				



COPYRIGHT © 2005 BY BAXTER & WOODMAN, INC.
 STATE OF ILLINOIS - PROFESSIONAL DESIGN FIRM
 LICENSE NO. 184-000727 EXPIRES 6/30/2010
 6/27/2009

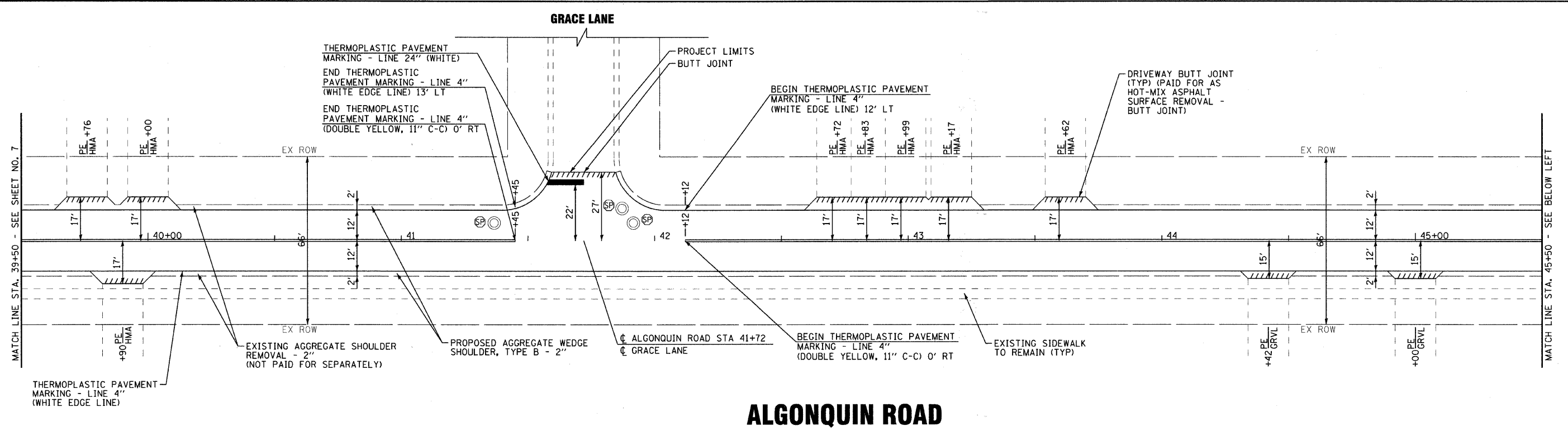
	DESIGNED - MWP	REVISED - IDOT REVIEW 06-01-09
	DRAWN - KAR	REVISED - IDOT REVIEW 08-03-09
	CHECKED - RWL	REVISED -
	DATE - 04-15-09	FILE - 090225-PP1.shp

**VILLAGE OF FOX RIVER GROVE, ILLINOIS
ALGONQUIN ROAD ARRA (LAPP)
IMPROVEMENTS**

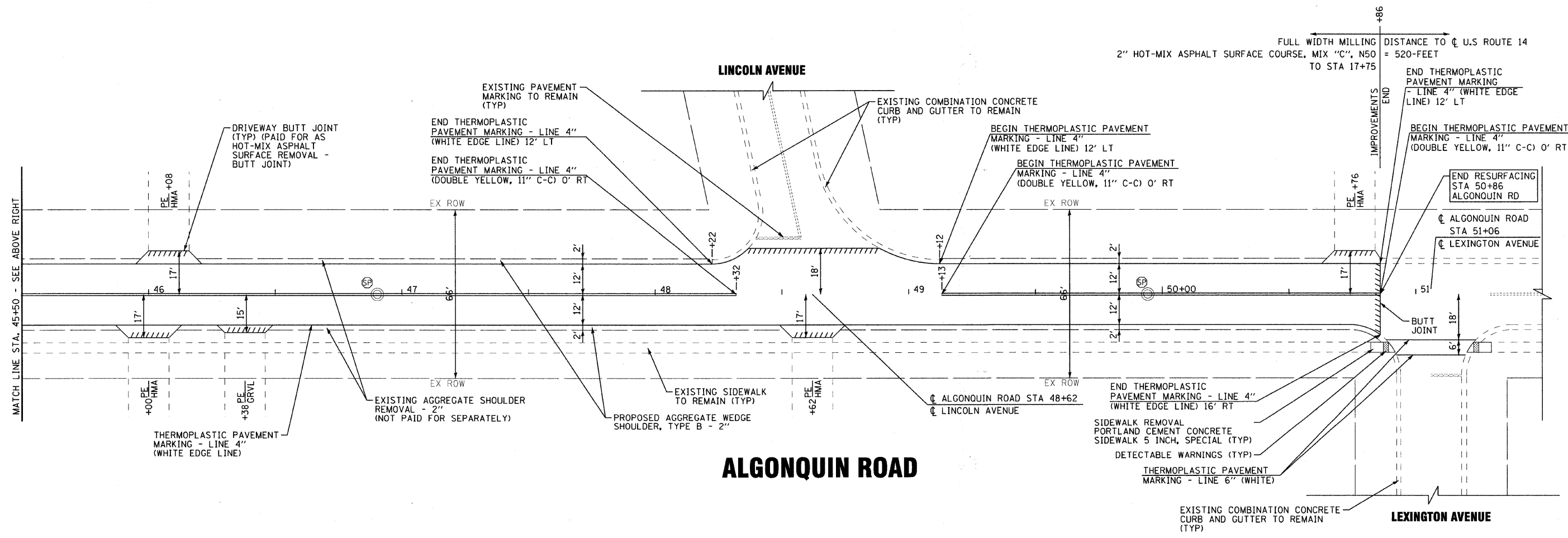
SCHEMATIC PLAN - ALGONQUIN ROAD

SCALE: 1" = 20' STA. 16+75 TO STA. 28+75

F.A.U. RTE.	SECTION	COUNTY	TOTAL SHEETS	SHEET NO.
3878	09-00022-00-RS	MCHEMRY	16	6
FED. ROAD DIST. NO. C-91-622-09			CONTRACT NO. 63277	
ILLINOIS FED. AID PROJECT ARA-9003 (315)				



ALGONQUIN ROAD



ALGONQUIN ROAD

COPYRIGHT © 2009 BY BAXTER & WOODMAN, INC.
 STATE OF ILLINOIS - PROFESSIONAL DESIGN FIRM
 LICENSE NO. 384-00222 EXPIRES 6/30/2011
 SOURCE: 02/2009



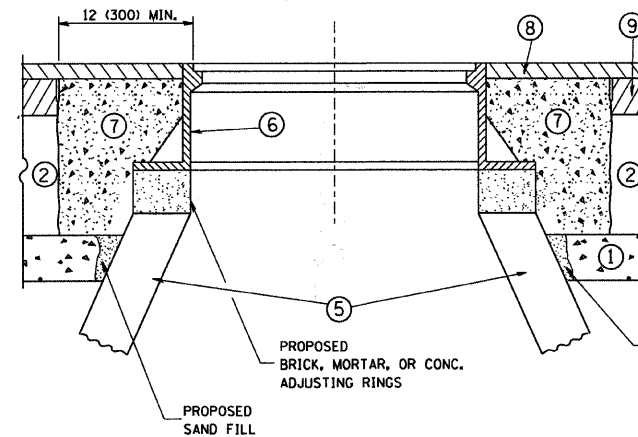
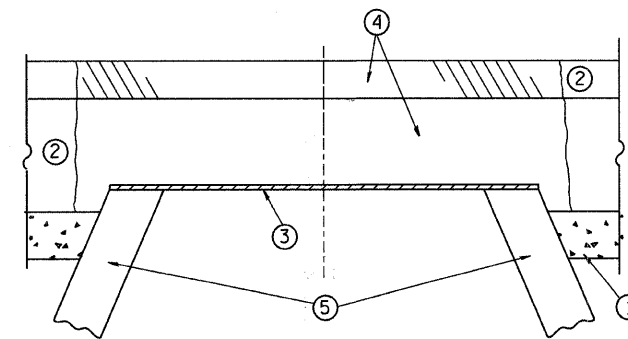
DESIGNED - MWP	REVISED - IDOT REVIEW 06-01-09
DRAWN - KAR	REVISED - IDOT REVIEW 08-03-09
CHECKED - RWL	REVISED -
DATE - 04-15-09	FILE - 090225-PP3.sht

**VILLAGE OF FOX RIVER GROVE, ILLINOIS
ALGONQUIN ROAD ARRA (LAPP)
IMPROVEMENTS**

SCHEMATIC PLAN - ALGONQUIN ROAD

SCALE: 1" = 20' STA. 39+50 TO STA. 51+50

F.A.U. RTE. 3878	SECTION 09-00022-00-RS	COUNTY McHENRY	TOTAL SHEETS 16	SHEET NO. 8
FED. ROAD DIST. NO. C-91-622-09			CONTRACT NO. 63277	
ILLINOIS FED. AID PROJECT ARA-9003 (315)				



CONSTRUCTION PROCEDURES

STAGE 1 (BEFORE PAVEMENT MILLING)

- A) REMOVE A MINIMUM OF 12 (300) OF THE PAVEMENT FROM AROUND THE STRUCTURE.
- B) REMOVE THE EXISTING FRAME AND LID FROM THE STRUCTURE.
- C) COVER THE STRUCTURE OPENING WITH A 36 (900) DIAMETER METAL PLATE.
- D) BACKFILL WITH CRUSHED STONE AND A MINIMUM 1 1/2 (40) THICK HMA SURFACE MIX APPROVED BY THE ENGINEER.

STAGE 2 (AFTER PAVEMENT MILLING)

- A) REMOVE THE HMA SURFACE MIX AND CRUSHED STONE.
- B) INSTALL THE FRAME AND LID; ADJUST THE FRAME TO ITS FINAL SURFACE ELEVATION.
- C) THE SURROUNDING SPACE SHALL BE FILLED WITH CLASS SI CONCRETE, OR HMA SURFACE COURSE OR HMA BINDER COURSE TO THE ELEVATION OF THE SURFACE OF THE EXISTING BASE COURSE OR THE BINDER COURSE.

THE PROCEDURE EXPLAINED ABOVE SHALL CONFORM TO THE APPLICABLE PORTIONS OF SECTIONS 353, 406, 602, AND 603 OF THE STANDARD SPECIFICATIONS.

LEGEND

- ① SUB-BASE GRANULAR MATERIAL
- ② EXISTING PAVEMENT
- ③ 36 (900) DIAMETER METAL PLATE
- ④ PROPOSED CRUSHED STONE AND HMA SURFACE MIX
- ⑤ EXISTING STRUCTURE
- ⑥ FRAME AND LID (SEE NOTES)
- ⑦ CLASS SI CONCRETE, HMA SURFACE COURSE OR HMA BINDER COURSE
- ⑧ PROPOSED HMA SURFACE COURSE
- ⑨ PROPOSED HMA BINDER COURSE

LOCATION OF STRUCTURES:

THE CONTRACTOR WILL BE REQUIRED TO KEEP A RECORD OF THE LOCATIONS OF THE BURIED STRUCTURES ACCORDING TO THE STATION AND DISTANCE LEFT OR RIGHT OF THE CENTERLINE OF PAVEMENT. UPON COMPLETION OF THE WORK, THE CONTRACTOR WILL DELIVER THE RECORD TO THE ENGINEER.

BASIS OF PAYMENT: THIS WORK WILL BE PAID FOR AT THE CONTRACT UNIT PRICE PER EACH FOR "FRAMES AND LIDS TO BE ADJUSTED, SPECIAL"

NEW FRAMES AND LIDS, WHEN SPECIFIED, WILL BE PAID FOR SEPARATELY.

NOTES:

EXISTING BROKEN FRAMES AND LIDS SHALL BE REMOVED AND DISPOSED OF BY THE CONTRACTOR AND SHALL BE REPLACED AS DIRECTED BY THE ENGINEER. REPLACEMENT FRAMES AND LIDS WILL BE PAID FOR IN ACCORDANCE WITH ARTICLE 109.04 OF THE STANDARD SPECIFICATIONS UNLESS A SEPARATE PAY ITEM HAS BEEN PROVIDED.

IF THE EXISTING LIDS ARE OPEN, THE FRAME WILL BE ADJUSTED TO THE ELEVATION OF THE MILLED PAVEMENT SURFACE PRIOR TO THE MILLING OPERATION. THE FRAME WILL NOT BE REMOVED AND COVERED BY THE METAL PLATE.

CITY OF CHICAGO CASTINGS ARE THE PROPERTY OF THE CITY AND THE CONTRACTOR SHALL NOTIFY THE CITY FOR REMOVAL AND DISPOSITION OF THE CASTINGS.

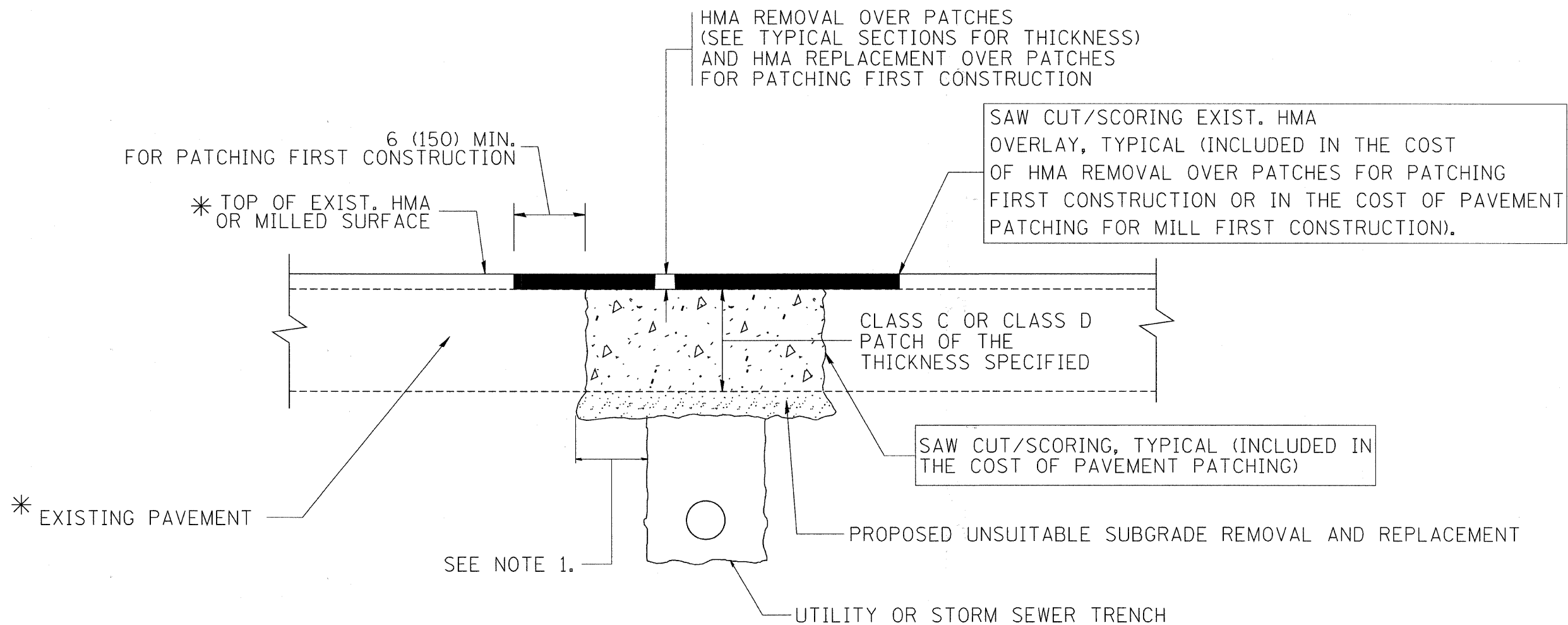
THE METAL PLATE USED TO COVER THE STRUCTURE SHALL REMAIN THE PROPERTY OF THE CONTRACTOR.

WHEN STRUCTURES ARE TO BE ADJUSTED OR RECONSTRUCTED, THE LOWERING AND RAISING OF THE FRAMES AND LIDS WILL NOT BE PAID FOR SEPARATELY BUT WILL BE INCLUDED IN THE COST OF THE CORRESPONDING PAY ITEM.

DETAILS FOR FRAMES AND LIDS ADJUSTMENT WITH MILLING

ALL DIMENSIONS ARE IN INCHES (MILLIMETERS) UNLESS OTHERWISE SHOWN

FILE NAME = W:\d\ststd\22x34\bd88.dgn	USER NAME = geglionobt	DESIGNED - R. SHAH	REVISED - R. SHAH 03-10-95	STATE OF ILLINOIS DEPARTMENT OF TRANSPORTATION	DETAILS FOR FRAMES AND LIDS ADJUSTMENT WITH MILLING			F.A.U. RTE.	SECTION	COUNTY	TOTAL SHEETS	SHEET NO.	
		DRAWN -	REVISED - A. ABBAS 03-21-97		SCALE: NONE	SHEET NO. 1 OF 1 SHEETS	STA.	TO STA.	3878	09-00022-00-RS	McHENRY	16	9
		PLOT SCALE = 50.0000' / IN.	REVISED - R. WIEDEMAN 05-14-04					BD600-03 (BD-8)			CONTRACT NO. 63277		
		PLOT DATE = 1/4/2008	REVISED - R. BORO 01-01-07					FED. ROAD DIST. NO. 1 ILLINOIS FED. AID PROJECT ARA-9003 (315)			C-91-622-09		



* SEE TYPICAL SECTIONS FOR THICKNESS AND MATERIALS

NOTES:

1. THE WIDTH OF THE FULL DEPTH PATCH OVER A TRENCH SHALL BE 12 (300) WIDER ON EACH SIDE OF THE TRENCH.
2. FOR METHOD OF MEASUREMENT AND BASIS OF PAYMENT, SEE RECURRING SPECIAL PROVISION "PATCHING WITH HOT-MIX ASPHALT OVERLAY REMOVAL".

SEQUENCE OF CONSTRUCTION (PATCHING FIRST)

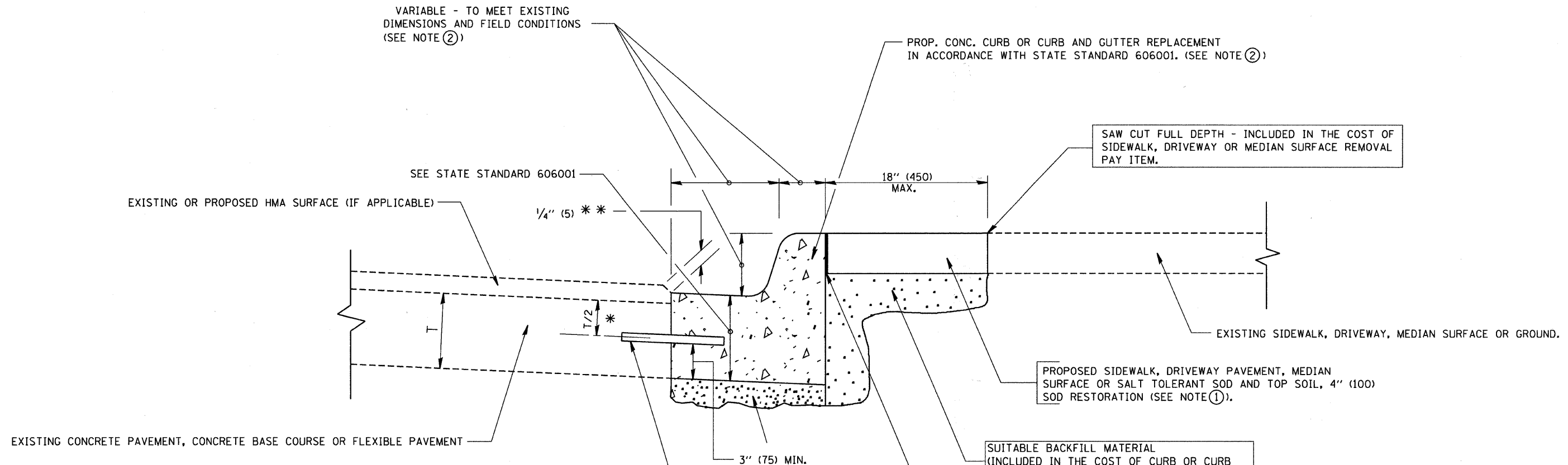
1. REMOVE THE EXISTING HMA MATERIAL OVER THE AREA TO BE PATCHED.
2. REMOVE AND REPLACE WITH CLASS C OR D PATCH.
3. REPLACE HMA MATERIAL OVER THE AREA TO BE PATCHED.

SEQUENCE OF CONSTRUCTION (MILLING FIRST)

1. MILL HMA FIRST IF THERE IS AT LEAST 4 1/2 INCHES OR MORE OF HMA MATERIAL ON TOP OF THE EXISTING PAVEMENT OR IF THE PAVEMENT IS FULL DEPTH HMA. A MINIMUM OF 2 INCHES OF HMA MATERIAL SHALL BE IN PLACE AFTER MILLING.
2. REMOVE AND REPLACE WITH FULL DEPTH CLASS D PATCHES TO TOP OF MILLED SURFACE.

ALL DIMENSIONS ARE IN INCHES (MILLIMETERS) UNLESS OTHERWISE SHOWN.

FILE NAME = c:\projects\dietsd22x34\ba22.dgn	USER NAME = bauerdl	DESIGNED - R. SHAH	REVISED - A. ABBAS 04-27-98	STATE OF ILLINOIS DEPARTMENT OF TRANSPORTATION	PAVEMENT PATCHING FOR HMA SURFACED PAVEMENT			F.A.U. RTE. 3878	SECTION 09-00022-00-RS	COUNTY MCHENRY	TOTAL SHEETS 16	SHEET NO. 10
	PLOT SCALE = 50.000' / 1" IN.	CHECKED -	REVISED - R. BORO 01-01-07		SCALE: NONE	SHEET NO. 1 OF 1 SHEETS	STA.	TO STA.	BD400-04 (BD-22) CONTRACT NO. 63277			
	PLOT DATE = 10/27/2008	DATE - 10-25-94	REVISED - R. BORO 09-04-07		FED. ROAD DIST. NO. 1 ILLINOIS FED. AID PROJECT ARA-9003 (315)							
			REVISED - K. ENG 10-27-08		C-91-622-09							



- * 3" (75) MINIMUM FROM TOP AND BOTTOM OF THE CONCRETE PAVEMENT OR BASE COURSE.
- * * IF THE FINAL SURFACE OF THE PAVEMENT IS CONCRETE, THE GUTTER IS TO BE FLUSH WITH THE PAVEMENT.

NOTE: ① SIDEWALK, DRIVEWAY PAVEMENT OR MEDIAN SURFACE SHALL BE SIMILAR TO THE MATERIAL BEING REMOVED AND WILL BE PAID FOR SEPARATELY.

SALT TOLERANT SOD AND TOP SOIL, 4" (100) RESTORATION WILL NOT BE PAID FOR SEPARATELY, BUT SHALL BE INCLUDED IN THE COST OF CURB OR CURB AND GUTTER REMOVAL AND REPLACEMENT.

② CURB OR CURB AND GUTTER REPLACEMENT SHALL MATCH THE SHAPE OF THE EXISTING CURB OR CURB AND GUTTER UNLESS OTHERWISE SPECIFIED.

③ FOR CURB OR CURB AND GUTTER REMOVAL AND REPLACEMENT ADJACENT TO FLEXIBLE PAVEMENT DELETE EPOXY COATED TIE BARS.

④ LONGITUDINAL BARS, IF ENCOUNTERED IN THE EXISTING CURB OR CURB AND GUTTER, ARE NOT TO BE REPLACED. CUTTING AND REMOVING LONGITUDINAL BARS SHALL BE INCLUDED IN THE COST OF CURB OR CURB AND GUTTER REMOVAL AND REPLACEMENT.

⑤ THE COST OF HMA SURFACE REMOVAL IN THE EXISTING GUTTER FLAG SHALL BE INCLUDED IN THE COST OF THE CURB AND GUTTER REMOVAL AND REPLACEMENT.

⑥ THE REMOVAL AND REPLACEMENT OF THE EXISTING CURB OR CURB AND GUTTER SHALL BE DONE IN ACCORDANCE WITH THE APPLICABLE PORTIONS OF SECTION 440 AND 606 OF THE STANDARD SPECIFICATIONS.

⑦ THE LOCATIONS OF REMOVAL AND REPLACEMENT OF EXISTING CURB OR CURB AND GUTTER SHALL BE DETERMINED BY THE RESIDENT ENGINEER AT THE TIME OF CONSTRUCTION.

UNSUITABLE SUB-BASE MATERIAL TO BE REMOVED, IF DIRECTED BY THE ENGINEER, SHALL BE REPLACED WITH EITHER SUB-BASE GRANULAR MATERIAL, TYPE B OR ADDITIONAL THICKNESS OF CONCRETE.

REMOVAL AND REPLACEMENT 4" (100) OR LESS IS INCLUDED IN THE COST OF CURB OR CURB AND GUTTER REMOVAL AND REPLACEMENT.

REMOVAL AND REPLACEMENT IN EXCESS OF 4" (100) WILL BE PAID FOR IN ACCORDANCE WITH ARTICLE 109.04 OF THE STANDARD SPECIFICATIONS.

PROPOSED #6 (20) EPOXY COATED TIE BARS 24" (600) LONG AT 24" (600) CENTERS WILL NOT BE PAID FOR SEPARATELY. DELETE EPOXY COATED TIE BARS IF EXISTING TIE BARS ARE USUABLE AS DETERMINED BY THE ENGINEER. (SEE NOTE ③).

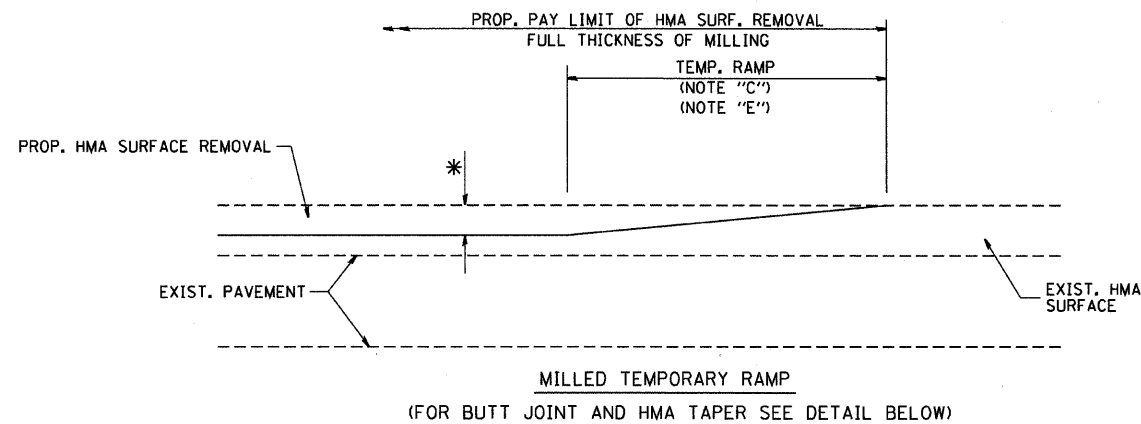
BASIS OF PAYMENT:

THIS WORK WILL BE PAID FOR AT THE CONTRACT UNIT PRICE PER FOOT (METER) FOR "CURB REMOVAL AND REPLACEMENT" OR "COMBINATION CONCRETE CURB AND GUTTER REMOVAL AND REPLACEMENT".

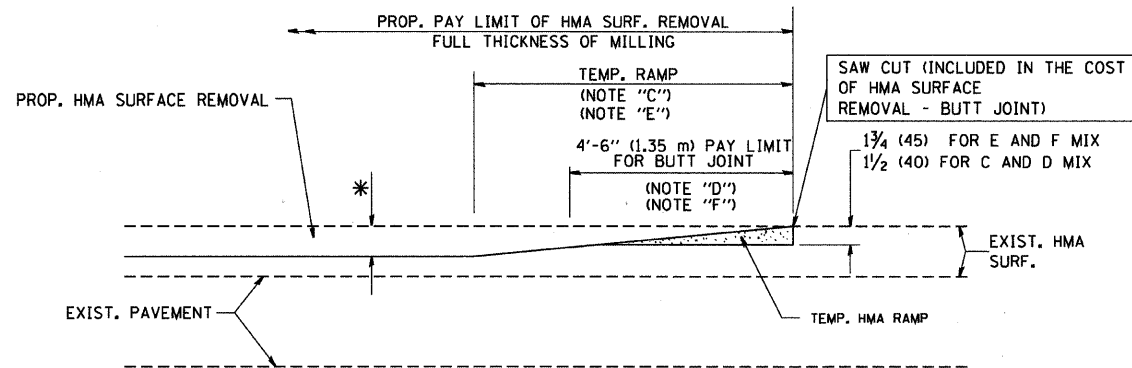
CURB OR CURB AND GUTTER REMOVAL AND REPLACEMENT

ALL DIMENSIONS ARE IN INCHES (MILLIMETERS) UNLESS OTHERWISE SHOWN.

FILE NAME = W:\diststd\22x34\bd24.dgn	USER NAME = geglrobt	DESIGNED - A. HOUSEH	REVISED - R. SHAH 10-03-96	STATE OF ILLINOIS DEPARTMENT OF TRANSPORTATION	CURB OR CURB AND GUTTER REMOVAL AND REPLACEMENT	F.A.U. RTE. 3878	SECTION 09-00022-00-RS	COUNTY MCHENRY	TOTAL SHEETS 16	SHEET NO. 11
		DRAWN -	REVISED - A. ABBAS 03-21-97							
		CHECKED -	REVISED - M. GOMEZ 01-22-01							
		DATE - 03-11-94	REVISED - R. BORO 01-01-07							
						SCALE: NONE	SHEET NO. 1 OF 1 SHEETS	STA.	TO STA.	
						BD600-06 (BD-24) CONTRACT NO. 63277 FED. ROAD DIST. NO. 1 (ILLINOIS) FED. AID PROJECT ARA-9003 (315) C-91-622-09				

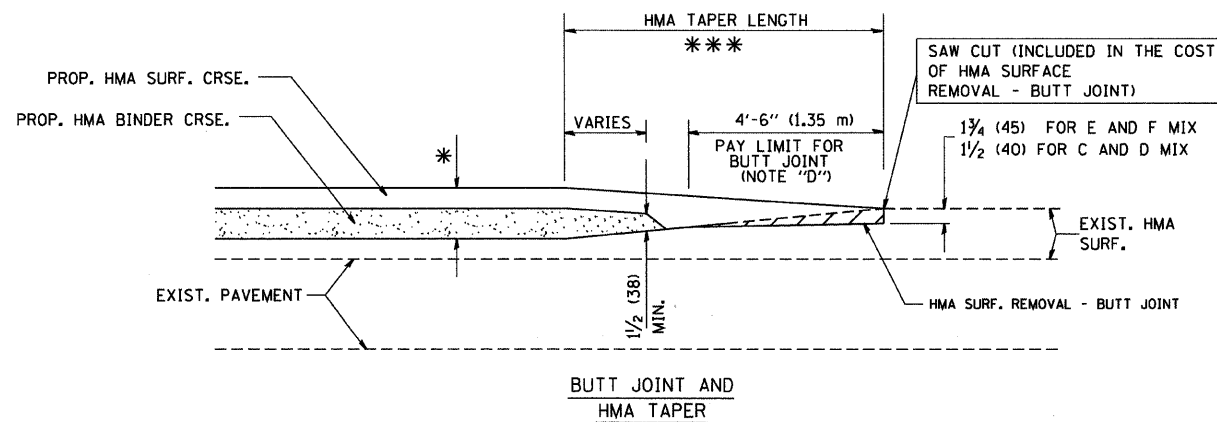


OPTION 1

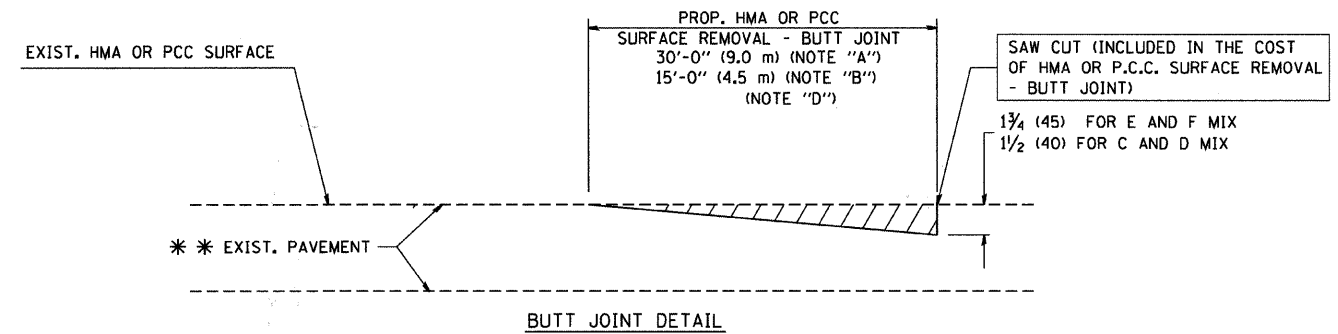


OPTION 2

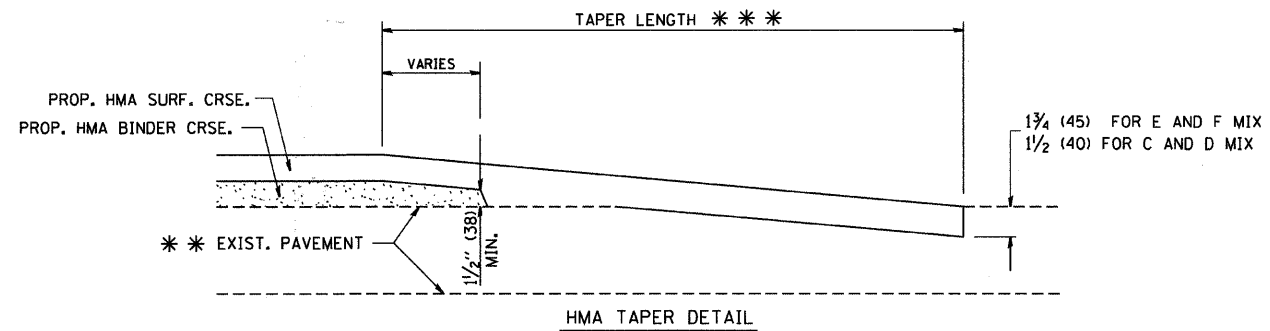
TYPICAL TEMPORARY RAMP



TYPICAL BUTT JOINT AND HMA TAPER FOR MILLING AND RESURFACING



BUTT JOINT DETAIL



HMA TAPER DETAIL

TYPICAL BUTT JOINT AND HMA TAPER FOR RESURFACING ONLY

*** PC CONCRETE, HMA OR HMA RESURFACED PAVEMENT.

NOTES

- A: MAINLINE ROADWAYS AND MAJOR SIDE ROADS.
 - B: MINOR SIDE ROADS.
 - C: THE TEMP. RAMP SHALL BE CONSTRUCTED IMMEDIATELY UPON REMOVAL OF THE EXISTING HMA SURFACE.
 - D: THE BUTT JOINT SHALL BE CONSTRUCTED IMMEDIATELY PRIOR TO PLACING THE PROPOSED HMA COURSES.
 - E: TAPER THE TEMP. RAMP AT A RATE OF 3'-0" (900 mm) PER 1 INCH (25 mm) OF MILLING THICKNESS.
 - F: INSTALLATION AND REMOVAL OF THE 4'-6" (1.35 m) TEMP. RAMP IS INCLUDED IN COST OF HMA SURFACE REMOVAL - BUTT JOINT
 - G: SEE ARTICLE 406.08 AND 406.14 OF THE STANDARD SPECIFICATIONS FOR "HMA AND/OR PCC SURFACE REMOVAL, BUTT JOINT".
- * SEE TYPICAL SECTIONS FOR MILLING THICKNESS.
- *** 20'-0" (6.1 m) PER 1 (25) RESURFACING (NOTE "A")
10'-0" (3.0 m) PER 1 (25) RESURFACING (NOTE "B")

BASIS OF PAYMENT:

THE BUTT JOINT WILL BE PAID FOR AT THE CONTRACT UNIT PRICE PER SQUARE YARD (SQUARE METER) FOR "HOT-MIX ASPHALT SURFACE REMOVAL - BUTT JOINT" OR FOR "PORTLAND CEMENT CONCRETE SURFACE REMOVAL - BUTT JOINT".

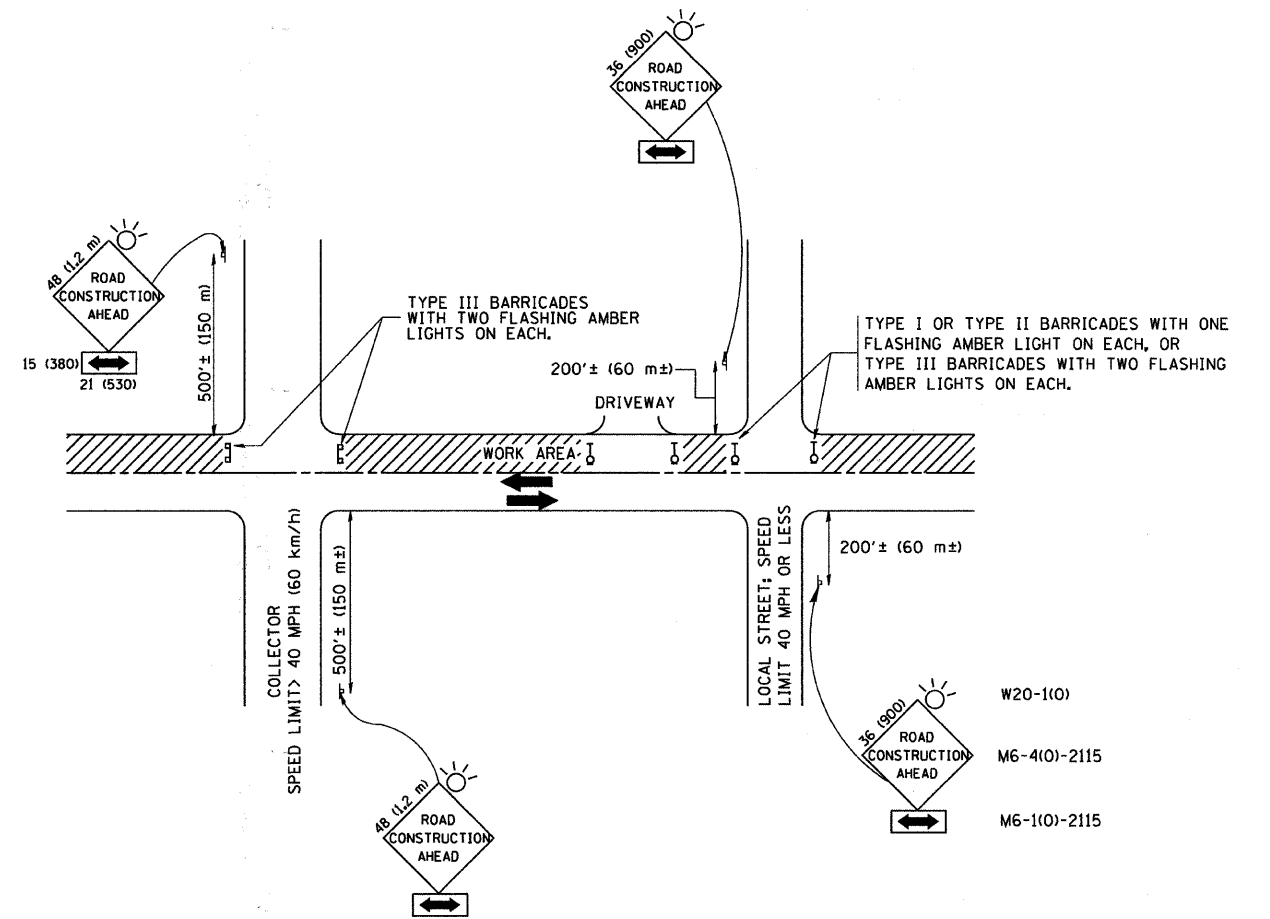
ALL DIMENSIONS ARE IN INCHES (MILLIMETERS) UNLESS OTHERWISE SHOWN.

FILE NAME = W:\diststd\22x34\bd32.dgn	USER NAME = gaglianob	DESIGNED - M. DE YONG	REVISED - R. SHAH 10-25-94
		DRAWN -	REVISED - A. ABBAS 03-21-97
	PLOT SCALE = 50.0000 ' / IN.	CHECKED -	REVISED - M. GOMEZ 04-06-01
	PLOT DATE = 1/4/2008	DATE - 06-13-90	REVISED - R. BORO 01-01-07

**STATE OF ILLINOIS
DEPARTMENT OF TRANSPORTATION**

BUTT JOINT AND HMA TAPER DETAILS			
SCALE: NONE	SHEET NO. 1 OF 1 SHEETS	STA.	TO STA.

F.A.U. RTE. 3878	SECTION 09-00022-00-RS	COUNTY McHENRY	TOTAL SHEETS 16	SHEET NO. 12
BD400-05 BD32			CONTRACT NO. 63277	
FED. ROAD DIST. NO. 1 ILLINOIS FED. AID PROJECT ARA-9003 (315)				



TRAFFIC CONTROL AND PROTECTION FOR SIDE ROADS, INTERSECTIONS, AND DRIVEWAYS

NOTES:

A. FOR NO LANE RESTRICTION ON THE SIDE ROAD OR DRIVEWAYS

1. SIDE ROAD WITH A SPEED LIMIT OF 40 MPH (60 km/h) OR LESS AS SHOWN ON THE DRAWING AND AS DIRECTED BY THE ENGINEER:
 - a) ONE ROAD CONSTRUCTION AHEAD SIGN 36 x 36 (900x900) WITH A FLASHER AND FLAG MOUNTED ON IT APPROXIMATELY 200' (60 m) IN ADVANCE OF THE MAIN ROUTE.
 - b) THE CLOSED PORTION OF THE MAIN ROUTE SHALL BE PROTECTED BY BLOCKING WITH TYPE I, TYPE II OR TYPE III BARRICADES, 1/3 OF THE CROSS SECTION OF THE CLOSED PORTION.
2. SIDE ROAD WITH A SPEED LIMIT GREATER THAN 40 MPH (60 km/h) AS SHOWN ON THE DRAWING AND AS DIRECTED BY THE ENGINEER:
 - a) ONE ROAD CONSTRUCTION AHEAD SIGN 48 x 48 (1.2 m x 1.2 m) WITH A FLASHER MOUNTED ON IT APPROXIMATELY 500' (150 m) IN ADVANCE OF THE MAIN ROUTE.
 - b) THE CLOSED PORTION OF THE MAIN ROUTE SHALL BE PROTECTED BY BLOCKING WITH TYPE III BARRICADES, 1/2 OF THE CROSS SECTION OF THE CLOSED PORTION.
3. WHEN THE SIDE ROAD LIES BETWEEN THE BEGINNING OF THE MAINLINE SIGNING AND THE WORK ZONE, A SINGLE HEADED ARROW (M6-1) SHALL BE USED IN LIEU OF THE DOUBLE HEADED ARROW (M6-4).

B. FOR A LANE CLOSURE ON A SIDE ROAD OR DRIVEWAY:

USE APPLICABLE PORTIONS OF THE TYPICAL APPLICATION OF TRAFFIC CONTROL DEVICES (STD. 701501, STD. 701606 OR THE APPROPRIATE STANDARD). THE SPACING OF SIGNS AND BARRICADES SHALL BE ADJUSTED FOR FIELD CONDITIONS AS DIRECTED BY THE ENGINEER. THE DIRECTIONAL ARROW SHALL BE COVERED OR REMOVED WHEN NO LONGER CONSISTENT WITH THE SIDE ROAD LANE CLOSURE.

C. ADVANCE WARNING SIGNS ARE TO BE OMITTED ON DRIVEWAY UNLESS OTHERWISE NOTED.

D. THE TRAFFIC CONTROL AND PROTECTION FOR SIDE ROADS, INTERSECTIONS, AND DRIVEWAYS SHALL BE INCIDENTAL TO THE COST OF SPECIFIED TRAFFIC CONTROL STANDARDS OR ITEMS.

All dimensions are in millimeters (inches) unless otherwise shown.

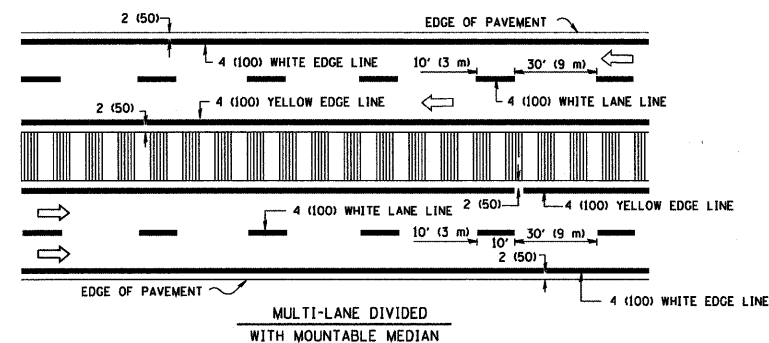
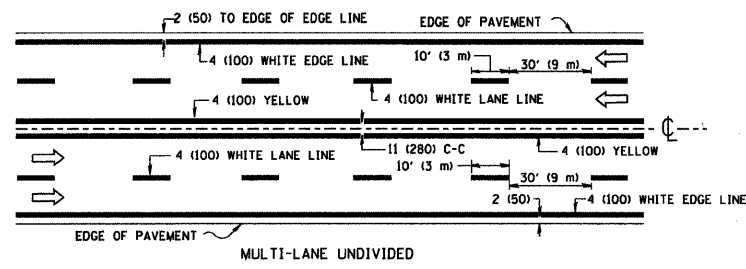
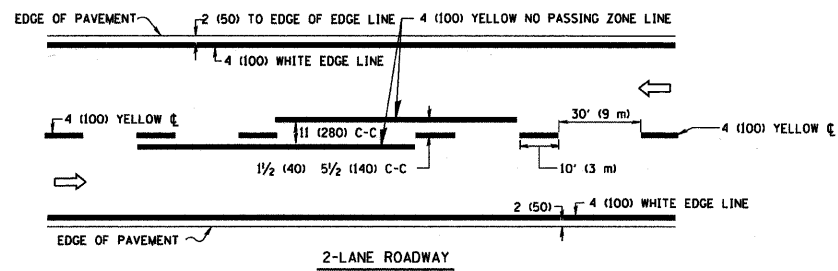
FILE NAME = W:\diststd\22x34\toi8.dgn	USER NAME = goglionobt	DESIGNED - LHA	REVISED - J. OBERLE 10-18-95
		DRAWN -	REVISED - A. HOUSEH 03-06-96
	PLOT SCALE = 50,000' / IN.	CHECKED -	REVISED - A. HOUSEH 10-15-96
	PLOT DATE = 1/4/2008	DATE - 06-89	REVISED - T. RAMMACHER 01-06-00

STATE OF ILLINOIS
DEPARTMENT OF TRANSPORTATION

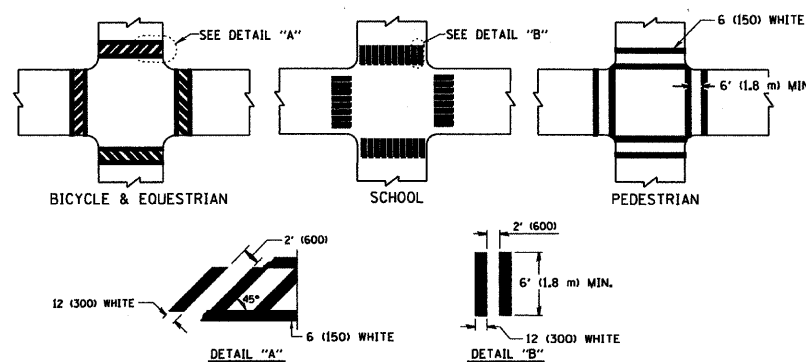
TRAFFIC CONTROL AND PROTECTION FOR
SIDE ROADS, INTERSECTIONS, AND DRIVEWAYS

SCALE: NONE SHEET NO. 1 OF 1 SHEETS STA. TO STA.

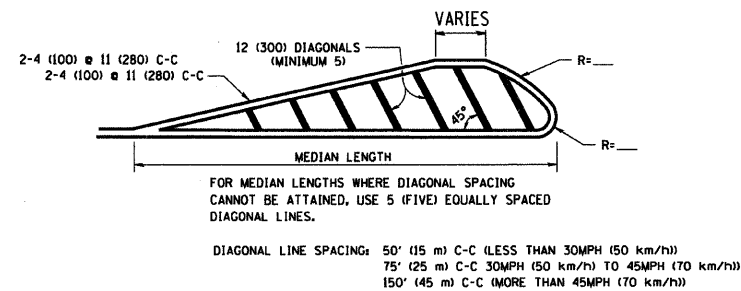
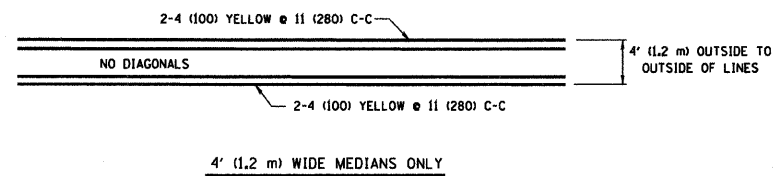
F.A.D. RTE.	SECTION	COUNTY	TOTAL SHEETS	SHEET NO.
3878	09-00022-00-RS	MCHENRY	16	13
TC-10			CONTRACT NO. 63277	
FED. ROAD DIST. NO. 1 (ILLINOIS) FED. AID PROJECT ARA-9003 (315)				



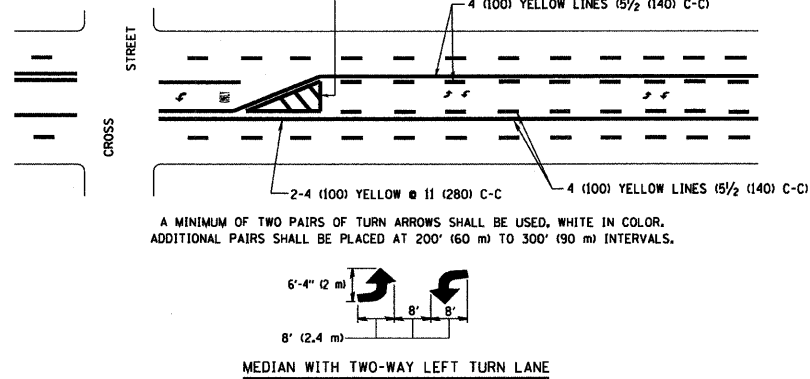
NOTE: MEDIANS WITH BARRIER CURB DO NOT REQUIRE AN EDGE LINE
TYPICAL LANE AND EDGE LINE MARKING



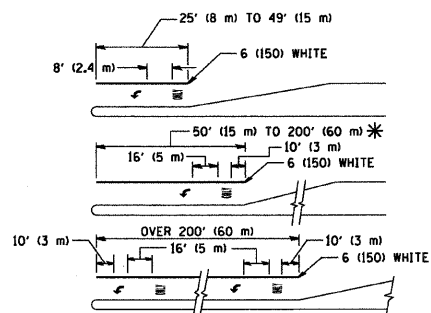
TYPICAL CROSSWALK MARKING



MEDIANS OVER 4' (1.2 m) WIDE

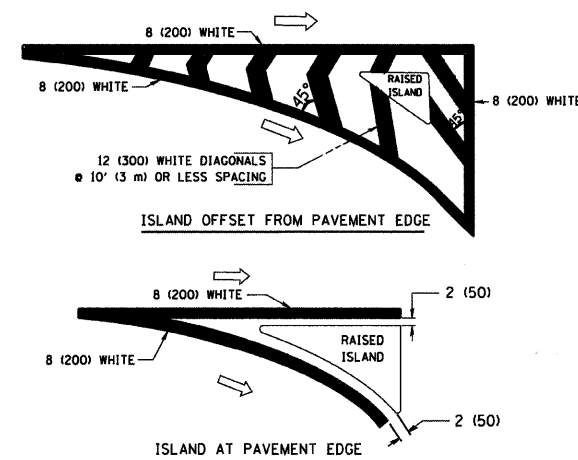


TYPICAL PAINTED MEDIAN MARKING



FULL SIZE LETTERS 8' (2.4 m) AND ARROWS SHALL BE USED.
 * TURN LANES IN EXCESS OF 400' (120 m) IN LENGTH MAY HAVE AN ADDITIONAL SET OF ARROW - "ONLY" INSTALLED MIDWAY BETWEEN THE OTHER TWO SETS OF ARROW - "ONLY".

TYPICAL LEFT (OR RIGHT) TURN LANE
TYPICAL TURN LANE MARKING



TYPICAL ISLAND MARKING

TYPE OF MARKING	WIDTH OF LINE	PATTERN	COLOR	SPACING / REMARKS
CENTERLINE ON 2 LANE PAVEMENT	4 (100)	SKIP-DASH	YELLOW	10' (3 m) LINE WITH 30' (9 m) SPACE
CENTERLINE ON MULTI-LANE UNDIVIDED PAVEMENT	2 @ 4 (100)	SOLID	YELLOW	11 (280) C-C
NO PASSING ZONE LINES FOR ONE DIRECTION FOR BOTH DIRECTIONS	4 (100) 2 @ 4 (100)	SOLID SOLID	YELLOW YELLOW	5 1/2 (140) C-C FROM SKIP-DASH CENTERLINE 11 (280) C-C OMIT SKIP-DASH CENTERLINE BETWEEN
LANE LINES	4 (100) 5 (125) ON FREEWAYS	SKIP-DASH SKIP-DASH	WHITE WHITE	10' (3 m) LINE WITH 30' (9 m) SPACE
DOTTED LINES (EXTENSIONS OF CENTER, LANE OR TURN LANE MARKINGS)	SAME AS LINE BEING EXTENDED	SKIP-DASH	SAME AS LINE BEING EXTENDED	2' (600) LINE WITH 6' (1.8 m) SPACE
EDGE LINES	4 (100)	SOLID	YELLOW-LEFT WHITE-RIGHT	OUTLINE MOUNTABLE MEDIANS IN YELLOW. EDGE LINES ARE NOT USED NEXT TO BARRIER CURB
TURN LANE MARKINGS	6 (150) LINE; FULL SIZE LETTERS & SYMBOLS (8' (2.4m))	SOLID	WHITE	SEE TYPICAL TURN LANE MARKING DETAIL
TWO WAY LEFT TURN MARKING	2 @ 4 (100) EACH DIRECTION 8' (2.4m) LEFT ARROW	SKIP-DASH AND SOLID IN PAIRS	YELLOW WHITE	10' (3 m) LINE WITH 30' (9 m) SPACE FOR SKIP-DASH 5 1/2 (140) C-C BETWEEN SOLID LINE AND SKIP-DASH LINE SEE TYPICAL TWO-WAY LEFT TURN MARKING DETAIL
CROSSWALK LINES (PEDESTRIAN) A. DIAGONALS (BIKE & EQUESTRIAN) B. LONGITUDINAL BARS (SCHOOL)	2 @ 6 (150) 12 (300) @ 45° 12 (300) @ 90°	SOLID SOLID SOLID	WHITE WHITE WHITE	NOT LESS THAN 6' (1.8 m) APART 2' (600) APART SEE TYPICAL CROSSWALK MARKING DETAILS.
STOP LINES	24 (600)	SOLID	WHITE	PLACE 4' (1.2 m) IN ADVANCE OF AND PARALLEL TO CROSSWALK, IF PRESENT. OTHERWISE, PLACE AT DESIRED STOPPING POINT. PARALLEL TO CROSSROAD CENTERLINE, WHERE POSSIBLE
PAINTED MEDIANS	2 @ 4 (100) WITH 12 (300) DIAGONALS @ 45° NO DIAGONALS USED FOR 4' (1.2 m) WIDE MEDIANS	SOLID	YELLOW; TWO WAY TRAFFIC WHITE; ONE WAY TRAFFIC	11 (280) C-C FOR THE DOUBLE LINE SEE TYPICAL PAINTED MEDIAN MARKING.
CORE MARKING AND CHANNELIZING LINES	8 (200) WITH 12 (300) DIAGONALS @ 45°	SOLID	WHITE	DIAGONALS: 15' (4.5 m) C-C (LESS THAN 30MPH (50 km/h)) 20' (6 m) C-C (30MPH (50 km/h) TO 45MPH (70 km/h)) 30' (9 m) C-C (OVER 45MPH (70 km/h))
RAILROAD CROSSING	24 (600) TRANSVERSE LINES; "RR" 15' (4.5 m) LETTERS; 16 (400) LINE FOR "X"	SOLID	WHITE	SEE STATE STANDARD 780001 AREA OF: "R"=3.6 SQ. FT. (0.33 m ²) EACH "X"=54.0 SQ. FT. (5.0 m ²)
SHOULDER DIAGONALS	12 (300) @ 45°	SOLID	WHITE - RIGHT YELLOW - LEFT	50' (15 m) C-C (LESS THAN 30MPH (50 km/h)) 75' (22.5 m) C-C (30 MPH (50 km/h) TO 45MPH (70 km/h)) 150' (45 m) C-C (OVER 45MPH (70 km/h))

FOR FURTHER DETAILS ON PAVEMENT MARKING REFER TO STANDARD SPECIFICATIONS FOR ROAD AND BRIDGE CONSTRUCTION AND STATE STANDARD 780001.

All dimensions are in inches (millimeters) unless otherwise shown.

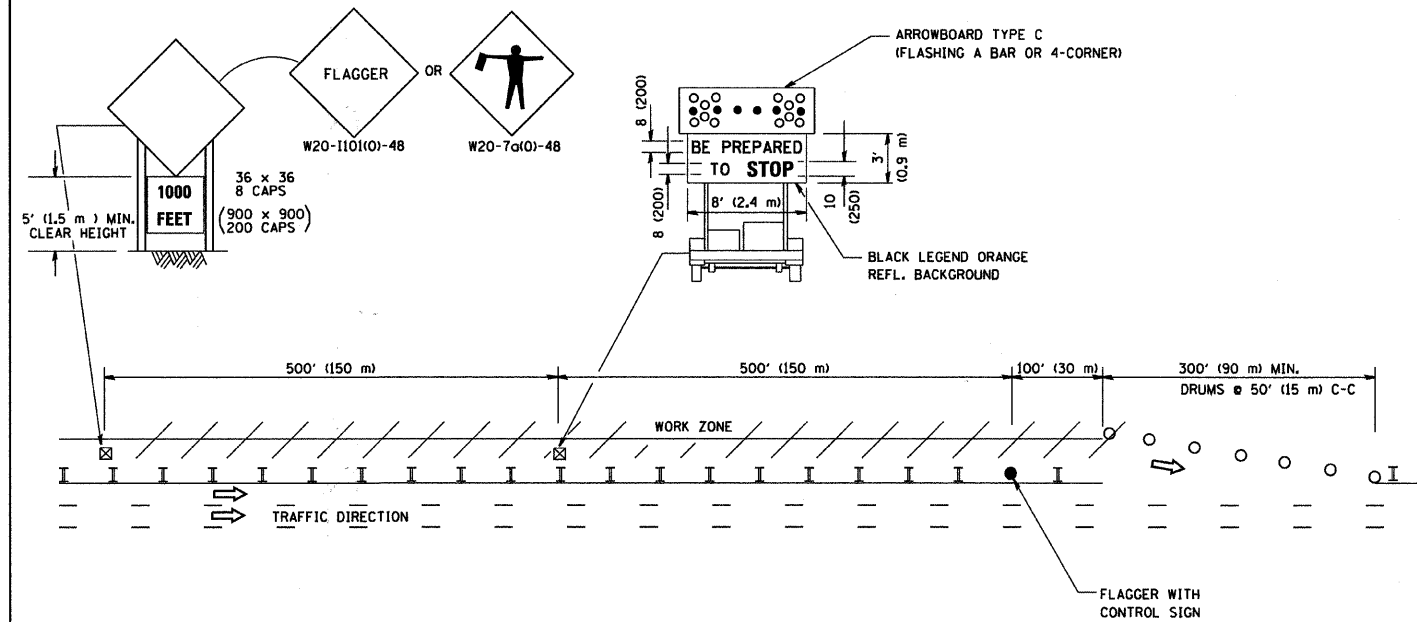
FILE NAME = W:\distsd\22x34\td13.dgn	USER NAME = gaglienobt	DESIGNED - EVERS	REVISED - T. RAMMACHER 10-27-94
		DRAWN - -	REVISED - A. HOUSEH 10-09-96
	PLOT SCALE = 50,000' / IN.	CHECKED - -	REVISED - A. HOUSEH 10-17-96
	PLOT DATE = 1/4/2008	DATE - 03-19-90	REVISED - T. RAMMACHER 01-06-00

**STATE OF ILLINOIS
 DEPARTMENT OF TRANSPORTATION**

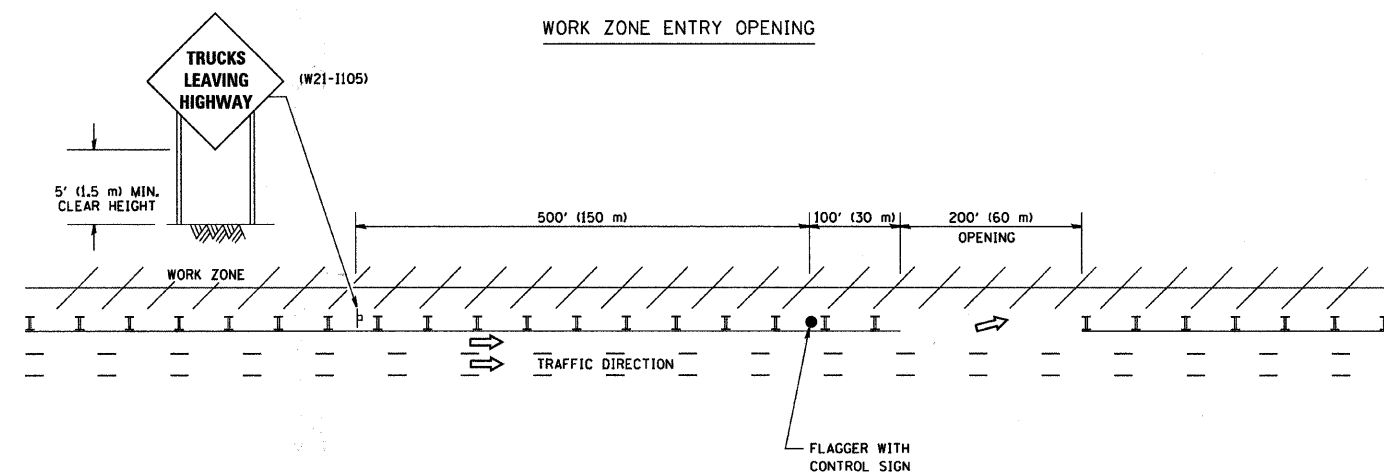
DISTRICT ONE		F.A.U. RTE.	SECTION	COUNTY	TOTAL SHEETS	SHEET NO.
TYPICAL PAVEMENT MARKINGS		3878	09-00022-00-RS	MCHEMRY	16	14
SCALE: NONE		SHEET NO. 1 OF 1 SHEETS		STA.	TO STA.	
		TC-13		CONTRACT NO. 63277		
		FED. ROAD DIST. NO. 1 ILLINOIS FED. AID PROJECT ARA-9003 (315)				
		C-91-622-09				

SIGNING FOR FLAGGING OPERATIONS AT WORK ZONE OPENINGS

WORK ZONE EXIT OPENING



WORK ZONE ENTRY OPENING



NOTES:

1. The Arrowboard, the Flagger Ahead trailer mounted sign, and the Trucks Leaving Highway sign shall be removed or turned away from traffic and the exit and entry openings shall be closed when the flagging operation ceases.
2. Work Zone Exit Openings should be a minimum of one half mile apart.
3. Exiting the work zone at any place other than at a Work Zone Exit Opening will be prohibited.
4. All vehicles shall enter the work zone at entry openings, using their turn signals to warn motorists.

ALL DIMENSIONS ARE IN INCHES (MILLIMETERS) UNLESS OTHERWISE SHOWN

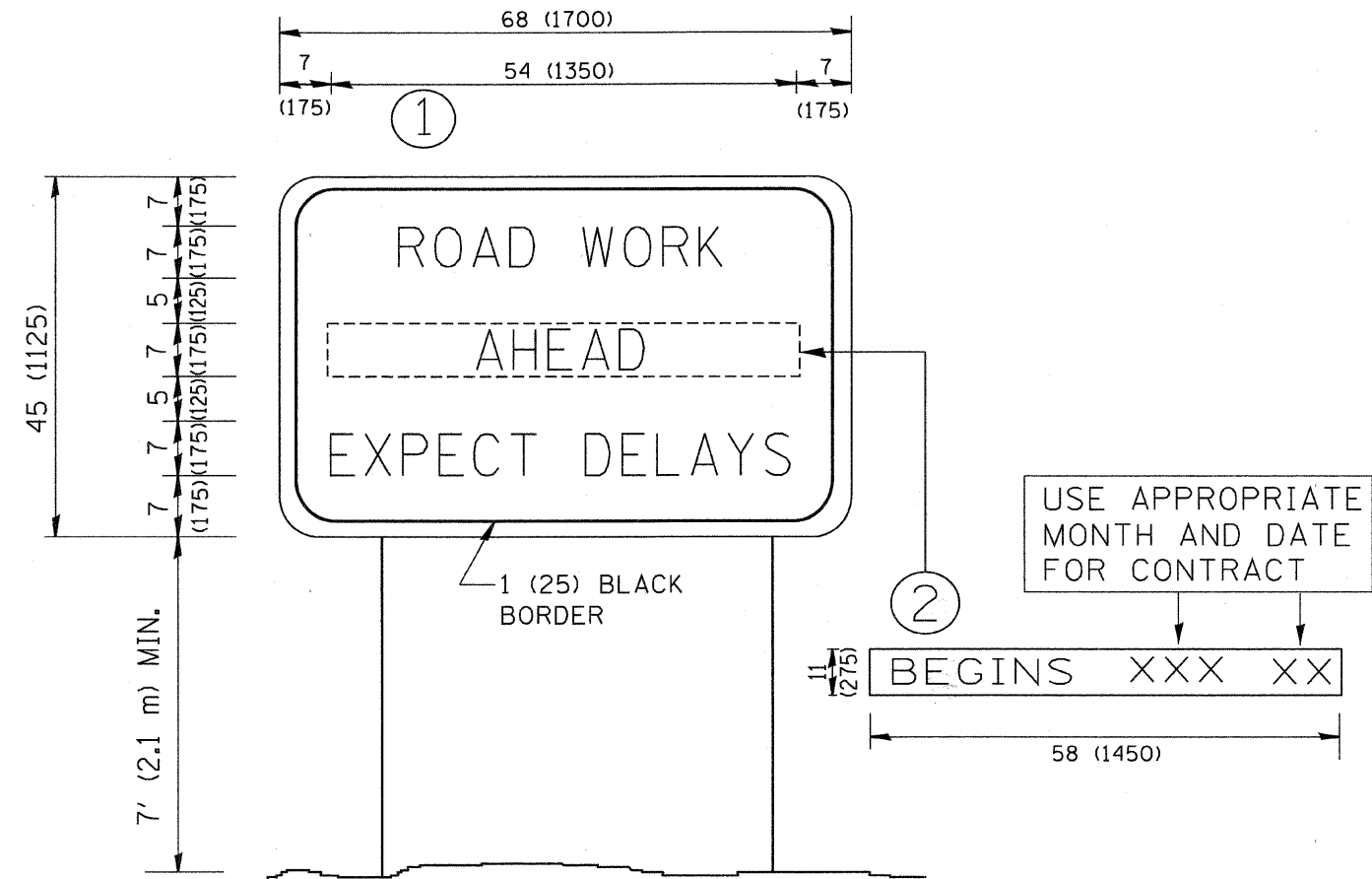
FILE NAME = W:\diststd\22x34\1c18.dgn	USER NAME = gaglienobt	DESIGNED -	REVISED - D.W.S. 08-98
		DRAWN -	REVISED - J.A.F. 04-03
	PLOT SCALE = 50,000' / IN.	CHECKED -	REVISED - J.A.F. 02-06
	PLOT DATE = 1/4/2008	DATE -	REVISED - S.P.B. 01-07

STATE OF ILLINOIS
DEPARTMENT OF TRANSPORTATION

SIGNING FOR FLAGGING OPERATIONS
AT WORK ZONE OPENINGS

SCALE: NONE SHEET NO. 1 OF 1 SHEETS STA. TO STA.

F.A.U. RTE. 3878	SECTION 09-00022-00-RS	COUNTY McHENRY	TOTAL SHEETS 16	SHEET NO. 15
TC-18			CONTRACT NO. 63277	
FED. ROAD DIST. NO. 1 ILLINOIS FED. AID PROJECT ARA-9003(315)				



NOTES:

1. USE BLACK LETTERING ON ORANGE BACKGROUND.
2. ERECT SIGNS IN ADVANCE OF THE LOCATION FOR THE "ROAD CONSTRUCTION AHEAD" SIGN AT LOCATIONS AS DIRECTED BY THE ENGINEER.
3. ERECT SIGN ① WITH INSTALLED PANEL ② ONE WEEK PRIOR TO THE START OF CONSTRUCTION.
4. REMOVE PANEL ② SOON AFTER THE START OF CONSTRUCTION.
5. SEE SPECIAL PROVISION FOR "TEMPORARY INFORMATION SIGNING" FOR ADDITIONAL INFORMATION.
6. ONE SIGN ASSEMBLY EQUALS 25.70 SQ. FT. (2.3 SQ. M.)
7. SHALL BE PAID FOR AS TEMPORARY INFORMATION SIGNING.

ALL DIMENSIONS ARE IN INCHES (MILLIMETERS) UNLESS OTHERWISE SHOWN.

FILE NAME = W:\datastd\22x34\to22.dgn	USER NAME = geglinoht	DESIGNED - DRAWN -	REVISED - R. MIRS 09-15-97 REVISED - R. MIRS 12-11-97	STATE OF ILLINOIS DEPARTMENT OF TRANSPORTATION	ARTERIAL ROAD INFORMATION SIGN		F.A.D. RTE.	SECTION	COUNTY	TOTAL SHEETS	SHEET NO.	
PLOT SCALE = 50,000 / IN.	CHECKED -	REVISED - T. RAMMACHER 02-02-99	SCALE: NONE		SHEET NO. 1 OF 1 SHEETS	STA.	TO STA.	3878	09-00022-00-RS	McHENRY	16	16
PLOT DATE = 1/4/2008	DATE -	REVISED - C. JUCIUS 01-31-07					TC-22		CONTRACT NO. 63277			
							FED. ROAD DIST. NO. 1 ILLINOIS FED. AID PROJECT ARA-9003(315)					