

F.A.P. RTE.	SECTION	COUNTY	TOTAL SHEETS	SHEET NO.
3734	09-00058-00-RS	COOK	12	1
ILLINOIS CONTRACT No. 63284				

Long Section Number
Multiple County Names

INDEX OF SHEETS

- 1 TITLE SHEET
- 2 GENERAL NOTES
- 3 SUMMARY OF QUANTITIES
- 4 TYPICAL SECTIONS & HOT-MIX ASPHALT MIXTURE REQUIREMENTS
- 5 CONSTRUCTION PLAN STA. 0+22.4± TO 11+26.0±
- 6 CONSTRUCTION PLAN STA. 11+26.0± TO 20+65.7±
- 7 TRAFFIC CONTROL & PAVEMENT MARKINGS STA. 0+22.4± TO 11+26.0±
- 8 TRAFFIC CONTROL & PAVEMENT MARKINGS STA. 11+26.0± TO 20+65.7±
- 9 THRU 12 MISCELLANEOUS DETAILS

STATE OF ILLINOIS DEPARTMENT OF TRANSPORTATION DIVISION OF HIGHWAYS

PLANS FOR PROPOSED FEDERAL AID HIGHWAY FAU ROUTE 3734 (34th STREET) EAST END AV. TO HOLEMAN AV. RESURFACING SECTION: 09-00058-00-RS PROJECT: ARA-9003 (394) JOB No. C-91-780-09 VILLAGE OF SOUTH CHICAGO HEIGHTS COOK COUNTY

STATE STANDARDS

- 000001-05 STANDARD SYMBOLS, ABBREVIATIONS, AND PATTERNS
- 424001-05 CURB RAMPS FOR SIDEWALKS
- 604001-03 FRAME AND LIDS TYPE 1
- 606001-04 CONCRETE CURB TYPE B & COMBINATION CONCRETE CURB & GUTTER
- 701606-06 URBAN LANE CLOSURE MULTILANE 2W
- 701701-06 URBAN LANE CLOSURE MULTILANE INTERSECTION
- 701801-04 LANE CLOSURE MULTILANE, 1W OR 2W
CROSSWALK OR SIDEWALK CLOSURE
- 701901-01 TRAFFIC CONTROL DEVICES (SHEETS 1, 2, & 3)
- 780001-02 TYPICAL PAVEMENT MARKINGS

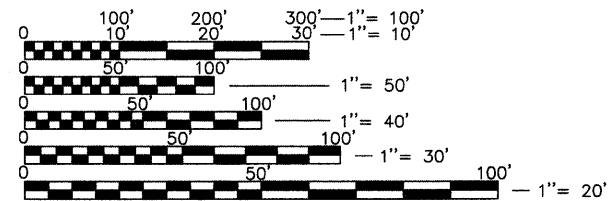


STRUCTURAL DESIGN TRAFFIC YEAR 2018
PV=1700 SU=200 MU=100
CLASS III ROADWAY
ADT 2000
FUNCTIONAL CLASSIFICATION=LOCAL ROADS
IBR 3.0
TRAFFIC FACTOR=0.24

COPYRIGHT © 2009
JOSEPH A. SCHUDT & ASSOCIATES
ALL RIGHTS RESERVED

Joseph A. Schudt & Associates
19350 S. HARLEM AVENUE FRANKFORT, IL 60423
PHONE: 708-720-1000 FAX: 708-720-1065
ILLINOIS REGISTERED DESIGN FIRM No. 184-001172

CIVIL ENGINEERING LAND SURVEYING ENVIRONMENTAL LAND PLANNING GPS SERVICES

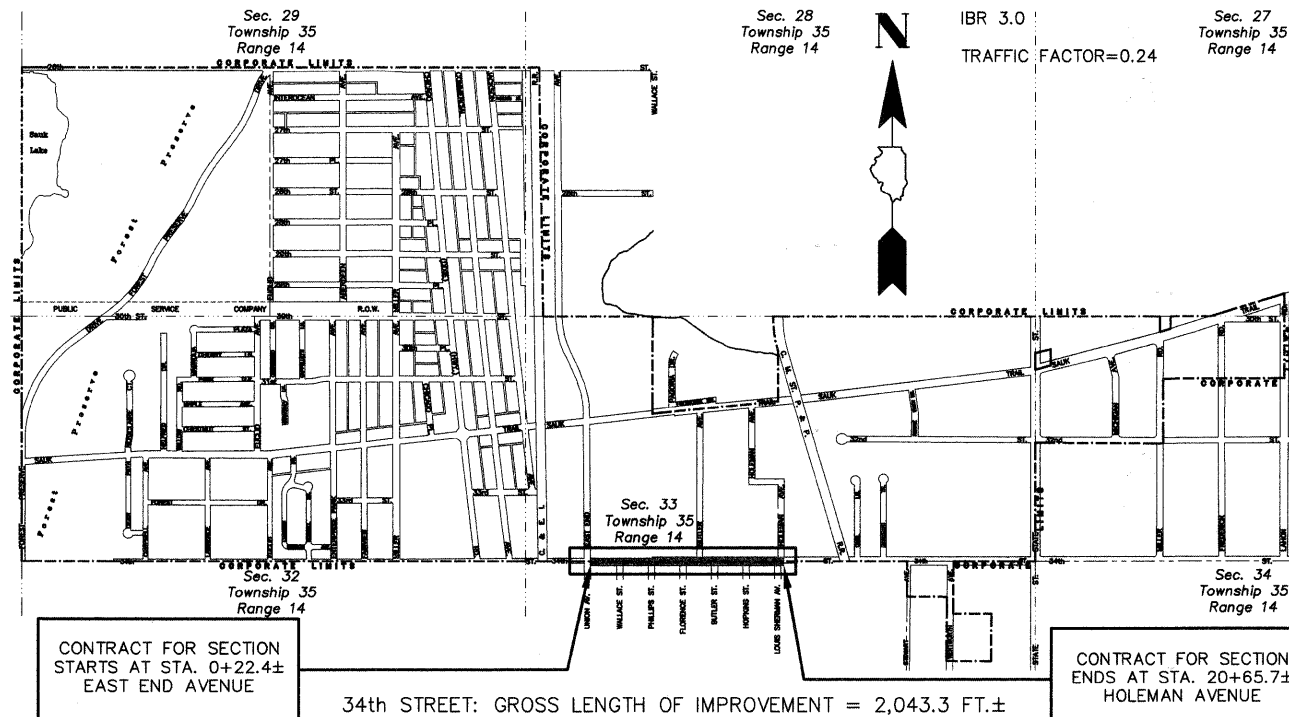


FULL SIZE PLANS HAVE BEEN PREPARED USING STANDARD ENGINEERING SCALES. REDUCED SIZED PLANS WILL NOT CONFORM TO STANDARD SCALES. IN MAKING MEASUREMENTS ON REDUCED PLANS, THE ABOVE SCALES MAY BE USED.

CALL J.U.L.I.E.
JOINT UTILITY LOCATION
INFORMATION FOR EXCAVATION
1-800-892-0123 OR 811
48 HOURS
(TWO WORKING DAYS)
TOLL FREE
24 HOURS A DAY
7 DAYS A WEEK

I.D.O.T. FIELD ENGINEER : MELCHOR MANGOBA 1-847-705-4408 SCHAUMBURG, IL.
CONSULTANT : JOSEPH A. SCHUDT & ASSOCIATES, MATT HORAN 1-708-720-1000 FRANKFORT, IL.

CONTRACT No. 63284



CONTRACT FOR SECTION
STARTS AT STA. 0+22.4±
EAST END AVENUE

34th STREET: GROSS LENGTH OF IMPROVEMENT = 2,043.3 FT.±
NET LENGTH OF IMPROVEMENT = 2,043.3 FT.± (0.387 MILES±)

CONTRACT FOR SECTION
ENDS AT STA. 20+65.7±
HOLEMAN AVENUE

PROJECT LOCATION
NOT TO SCALE

S. Matthew Heran
ILLINOIS PROFESSIONAL ENGINEER No. 062-019927
SIGNED: 6-24-09
LICENSE EXPIRES: 11/30/09

STATE OF ILLINOIS
LICENSED PROFESSIONAL ENGINEER
S. MATTHEW HERAN
062-019927

STATE OF ILLINOIS
DEPARTMENT OF TRANSPORTATION
DIVISION OF HIGHWAYS

Approved: JUNE 24, 2009
Paul J. Moran (MAYOR)
Local Agency, Position

Passed: SEPTEMBER 2, 2009
Chris Chantler
District Engineer of Local Roads & Streets

Releasing for Bid Based on Limited Review: SEPTEMBER 1, 2009
Diana M. O'Keefe
Deputy Director of Highways, Region Engineer

PRINTED BY THE AUTHORITY
OF THE STATE OF ILLINOIS