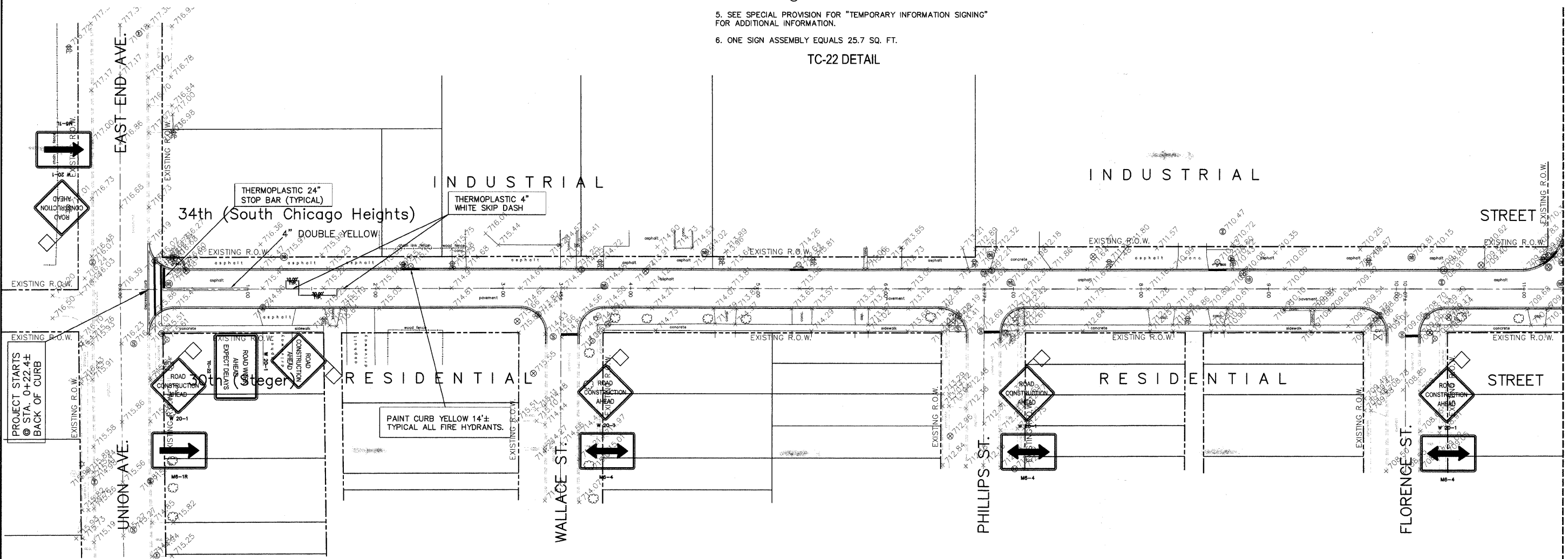


- NOTES:
1. USE BLACK LETTERING ON ORANGE BACKGROUND.
 2. ERECT SIGNS IN ADVANCE OF THE LOCATION FOR THE "ROAD CONSTRUCTION AHEAD" SIGN AT LOCATIONS AS DIRECTED BY THE ENGINEER.
 3. ERECT SIGN (A) WITH INSTALLED PANEL (B) ONE WEEK PRIOR TO THE START OF CONSTRUCTION.
 4. REMOVE PANEL (B) SOON AFTER THE START OF CONSTRUCTION.
 5. SEE SPECIAL PROVISION FOR "TEMPORARY INFORMATION SIGNING" FOR ADDITIONAL INFORMATION.
 6. ONE SIGN ASSEMBLY EQUALS 25.7 SQ. FT.

TC-22 DETAIL



CONTRACTOR SHALL CO-ORDINATE CURB REMOVAL AND REPLACEMENT TO MINIMIZE DISRUPTION TO SHIPPING AND RECEIVING IN THE INDUSTRIAL PARK.

Joseph A. Schudt & Associates
 19350 S. HARLEM AVENUE FRANKFORT, IL 60423
 PHONE: 708-720-1000 FAX: 708-720-1065
 ILLINOIS REGISTERED DESIGN FIRM No. 184-001172
 CIVIL ENGINEERING LAND SURVEYING ENVIRONMENTAL LAND PLANNING GPS SERVICES

*34th Street Street Paving
 East End Ave. to Holeman Ave.*

FILE NAME =	USER NAME =	DESIGNED - S.M.H.	REVISED - 8-24-09	STATE OF ILLINOIS DEPARTMENT OF TRANSPORTATION	TRAFFIC CONTROL & PAVEMENT MARKINGS	F.A.P. RTE.	SECTION	COUNTY	TOTAL SHEETS	SHEET NO.
	PLOT SCALE =	DRAWN - J.A.R.	REVISED -			3734	09-00058-00-RS	COOK	12	7
	PLOT DATE =	CHECKED - S.M.H.	REVISED -			CONTRACT NO. 63284		ILLINOIS FED. AID PROJECT AREA - 9003 (364)		

M:\2009\09-026\Drawings\Construction Drawings\09-026.dwg, 07-30-09 10:51:11 PM, COPYRIGHT, JOSEPH A. SCHUDT & ASSOCIATES, JAA

MATCH LINE - SEE SHEET 8 OF 12