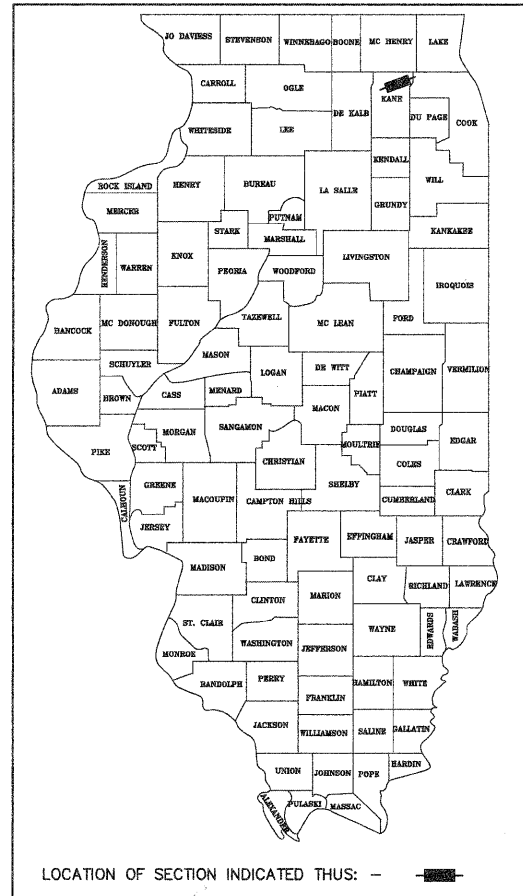


FOR INDEX OF SHEETS, SEE SHEET NO.2

# STATE OF ILLINOIS DEPARTMENT OF TRANSPORTATION DIVISION OF HIGHWAYS PLANS FOR PROPOSED FEDERAL AID PROJECT LAPP RESURFACING

KANEVILLE ROAD (FAU 1395)  
FROM RANDALL ROAD (FAU 2505)  
TO IL ROUTE 38 (FAU 3891)  
PROJECT NO. ARA-9003(316)  
SECTION NO. 09-00109-00-RS  
CITY OF GENEVA  
KANE COUNTY  
JOB NO. C-91-623-09

F.A.P. RTE.	SECTION	COUNTY	TOTAL SHEETS	SHEET NO.
1395	09-00109-00-RS	KANE	13	1
FED. ROAD DIST. NO.		ILLINOIS	FED. AID PROJECT - LAPP	
CONTRACT NO. 63294				

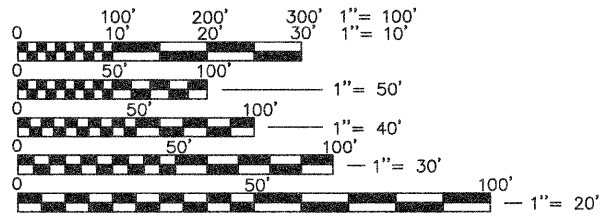


PROJECT LOCATED IN THE CITY OF GENEVA

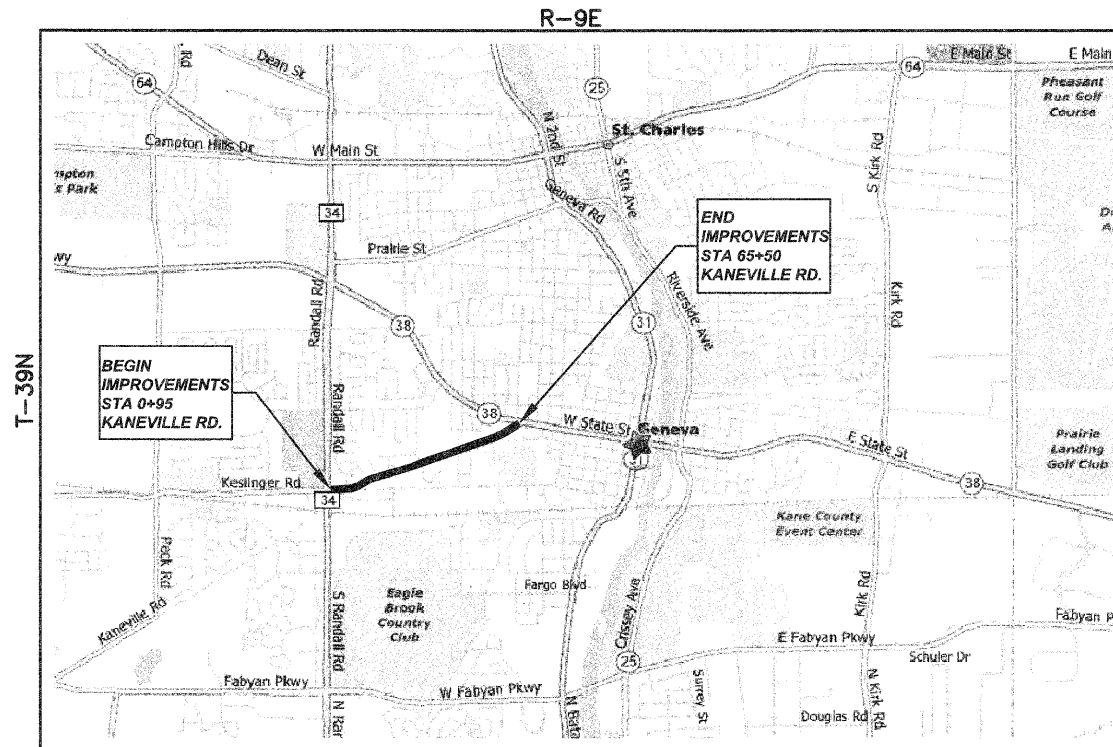
### DESIGN DESIGNATION

KANEVILLE ROAD: URBAN MINOR ARTERIAL  
DESIGN SPEED = 30/35 M.P.H.  
POSTED SPEED = 30/35 M.P.H.  
ADT(2006) = 8800

FIELD ENGINEER: MARILIN SOLOMON (847) 705-4407  
CONSULTING ENGINEER: ENGINEERING ENTERPRISES, INC.  
CONTACT: JASON M. BAUER (630)-466-6700



FULL SIZE PLANS HAVE BEEN PREPARED USING STANDARD ENGINEERING SCALES, REDUCED SIZED PLANS WILL NOT CONFORM TO STANDARD SCALES, IN MAKING MEASUREMENTS ON REDUCED PLANS, THE ABOVE SCALES MAY BE USED.



SW 1/4 & SE 1/4 SEC. 32, NE 1/4 SEC. 30, NW 1/4 SEC. 35, T-39N, R-9E, 3RD P.M.

### LOCATION MAP N.T.S.

GROSS LENGTH OF PROJECT = 6,455 FEET (1.22 MILES)  
NET LENGTH OF PROJECT = 6,455 FEET (1.22 MILES)

**JULIE**  
JOINT  
UTILITY  
LOCATION  
INFORMATION FOR  
EXCAVATION  
CALL 811

Know what's below.  
Call before you dig.

CONTRACT NO. 63294

STATE OF ILLINOIS DEPARTMENT OF TRANSPORTATION DIVISION OF HIGHWAYS	
APPROVED	August 13, 2009 <i>Daniel J. Dinger</i> CITY OF GENEVA, DIRECTOR OF PUBLIC WORKS
PASSED	August 31, 2009 <i>Chris M. Hoffer</i> DISTRICT 1 ENGINEER OF LOCAL ROADS & STREETS
RELEASING FOR BID BASED ON LIMITED REVIEW	August 26, 2009 <i>Diane M. O'Keefe</i> DEPUTY DIRECTOR OF HIGHWAYS, REGION 1 ENGINEER

DATE: 8-13-09

BY: *JMB*  
JASON M. BAUER

LICENSE EXPIRES: NOVEMBER 30, 2009

SEAL

**Engineering Enterprises, Inc.**  
CONSULTING ENGINEERS  
52 Wheeler Road  
Sugar Grove, Illinois 60554  
P: 630.466.6700 - W: www.eeiweb.com

PRINTED BY THE AUTHORITY OF THE STATE OF ILLINOIS

FIELD ENGINEER: MARILIN SOLOMON (847) 705-4407

Plotter: August 13, 2009 @ 6:46 AM By: Kris Pung - Tab: 01 Cover 22x34  
COPYRIGHT © 2009 ENGINEERING ENTERPRISES, INC.

Path: H:\SDSKPROJ\GE0901\DWG\DWG\_FINAL\_ENG\GE0901-01.dwg