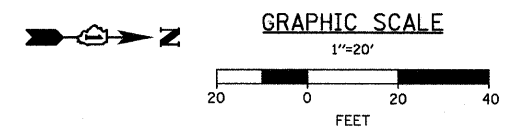
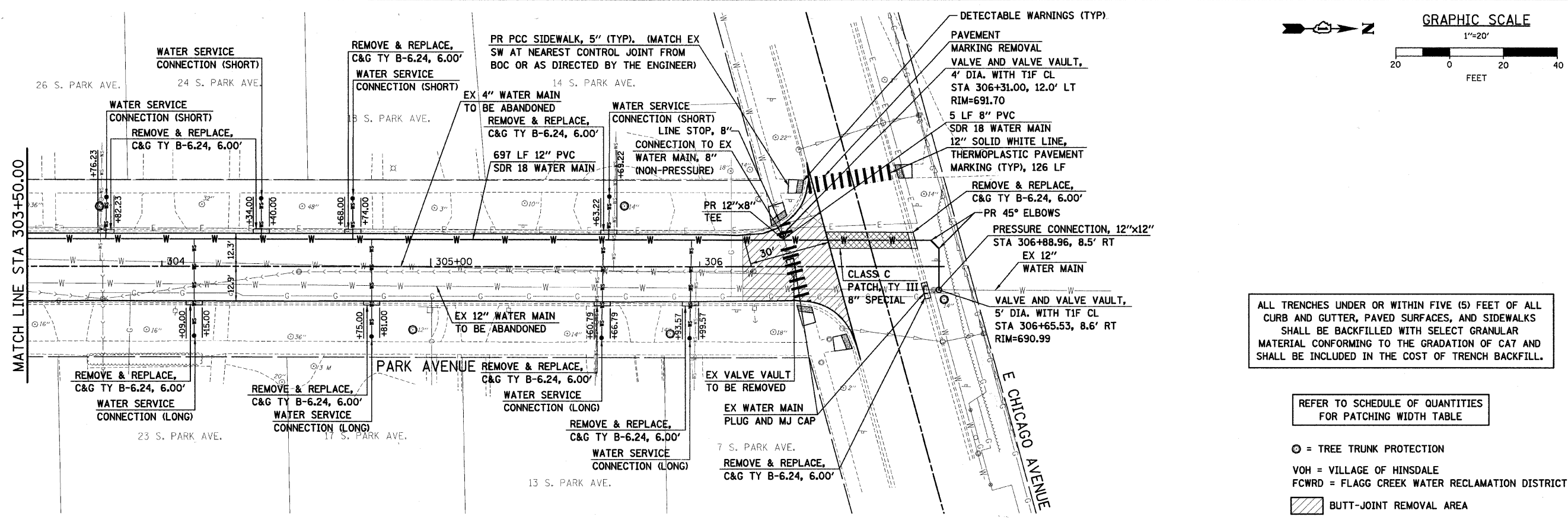


PLAN	REVISIONS	DATE
NO.	BY	
1		
2		
3		
4		
5		
6		
7		
8		
9		
10		
11		
12		
13		
14		
15		
16		
17		
18		
19		
20		
21		
22		
23		
24		
25		
26		
27		
28		
29		
30		
31		
32		
33		
34		
35		
36		
37		
38		
39		
40		
41		
42		
43		
44		
45		
46		
47		
48		
49		
50		
51		
52		
53		
54		
55		
56		
57		
58		
59		
60		
61		
62		
63		
64		
65		
66		
67		
68		
69		
70		
71		
72		
73		
74		
75		
76		
77		
78		
79		
80		
81		
82		
83		
84		
85		
86		
87		
88		
89		
90		
91		
92		
93		
94		
95		
96		
97		
98		
99		
100		

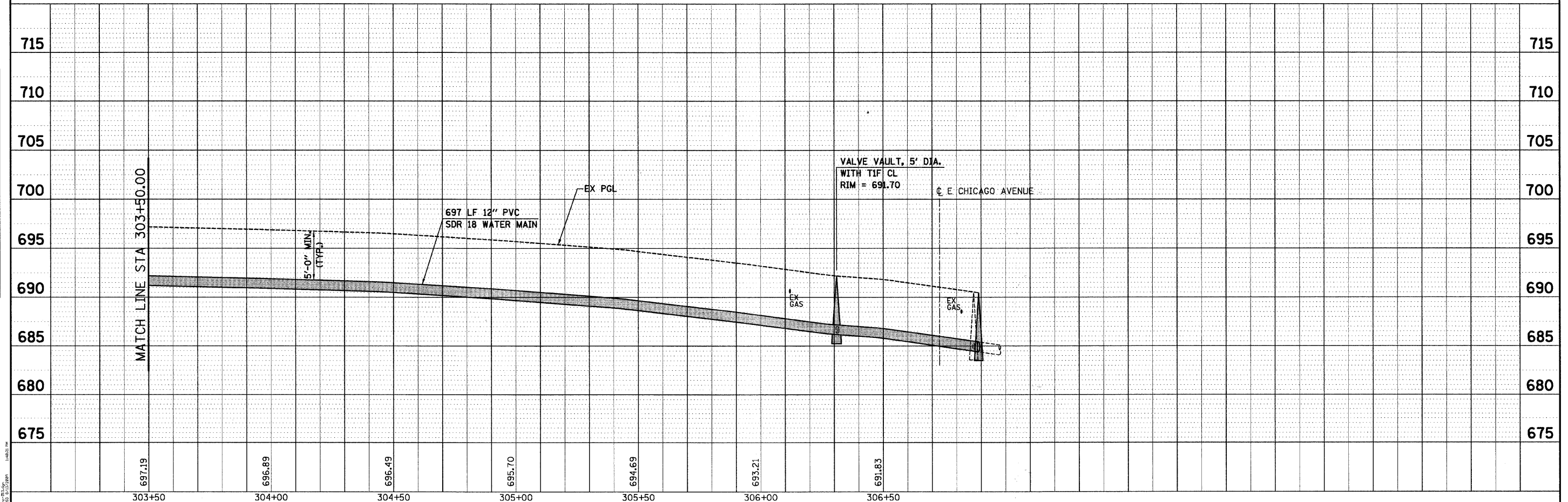
PROFILE	REVISIONS	DATE
NO.	BY	
1		
2		
3		
4		
5		
6		
7		
8		
9		
10		
11		
12		
13		
14		
15		
16		
17		
18		
19		
20		
21		
22		
23		
24		
25		
26		
27		
28		
29		
30		
31		
32		
33		
34		
35		
36		
37		
38		
39		
40		
41		
42		
43		
44		
45		
46		
47		
48		
49		
50		
51		
52		
53		
54		
55		
56		
57		
58		
59		
60		
61		
62		
63		
64		
65		
66		
67		
68		
69		
70		
71		
72		
73		
74		
75		
76		
77		
78		
79		
80		
81		
82		
83		
85		
86		
87		
88		
89		
90		
91		
92		
93		
94		
95		
96		
97		
98		
99		
100		



ALL TRENCHES UNDER OR WITHIN FIVE (5) FEET OF ALL CURB AND GUTTER, PAVED SURFACES, AND SIDEWALKS SHALL BE BACKFILLED WITH SELECT GRANULAR MATERIAL CONFORMING TO THE GRADATION OF CAT AND SHALL BE INCLUDED IN THE COST OF TRENCH BACKFILL.

REFER TO SCHEDULE OF QUANTITIES FOR PATCHING WIDTH TABLE

- = TREE TRUNK PROTECTION
- VOH = VILLAGE OF HINSDALE
- FCWRD = FLAGG CREEK WATER RECLAMATION DISTRICT
- ▨ BUTT-JOINT REMOVAL AREA



<p>SEC Group, Inc. Engineering Planning Landscape Architecture McHenry • Yorkville • New Lenox • Chicago www.secgroupinc.com</p>	USER NAME = s.johnson DESIGNED - DRAWN - SVJ CHECKED - GT PLOT DATE = 8/13/2009	REVISED - REVISED - REVISED - REVISED -	VILLAGE OF HINSDALE DUPAGE COUNTY, ILLINOIS GARFIELD STREET, FIRST STREET, & PARK AVENUE	PARK AVENUE UTILITY PLAN AND PROFILE	F.A.U. RTE. 2678 SECTION NO. 08-00086-00-RS COUNTY DUPAGE TOTAL SHEETS 65 SHEET NO. 52 CONTRACT NO. 63297
	SCALE: 1"=20' SHEET NO. 52 OF 65 SHEETS STA. 303+50.00 TO STA. 306+50.00			FED. ROAD DIST. NO. ILLINOIS FED. AID PROJECT	
	148031				
	148031				