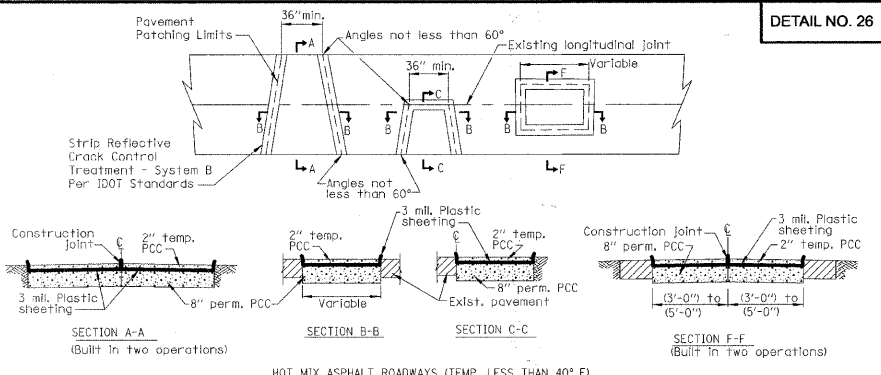


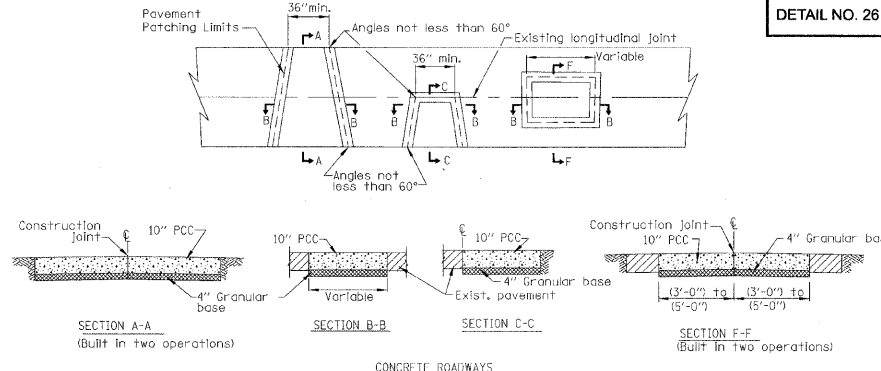
GENERAL NOTES:  
 1. All pavements must be saw cut using a wet saw prior to any excavation.  
 2. All Street patches must be inspected prior to placement of hot mix asphalt materials.  
 3. All granular backfill must be compacted through jettling or tamping.  
 4. Granular material will not be permitted as a temporary surface material. Steel plates, cold mix asphalt, or other materials approved by the Village Engineer shall be utilized.  
 5. In locations where bituminous patches will be overlaid with bituminous surface course, strip reflective crack control treatment shall be applied to all pavement joints and centered along the respective joints.  
 6. In locations where the pavement patch will not be overlaid, two (2) inches of bituminous surface course shall be laid in the final lift of the patch.  
 7. The depth of the bituminous pavement patch shall match the full depth of the existing pavement, but shall not be less than the Village Standard for the respective pavement section.

VILLAGE OF HINSDALE  
 STANDARD DETAIL  
 FOR  
 PAVEMENT PATCHING  
 SHEET 1  
 REV: [blank]  
 DATE: APRIL 2008  
 FILE: TRANS#PAVE-PATCH



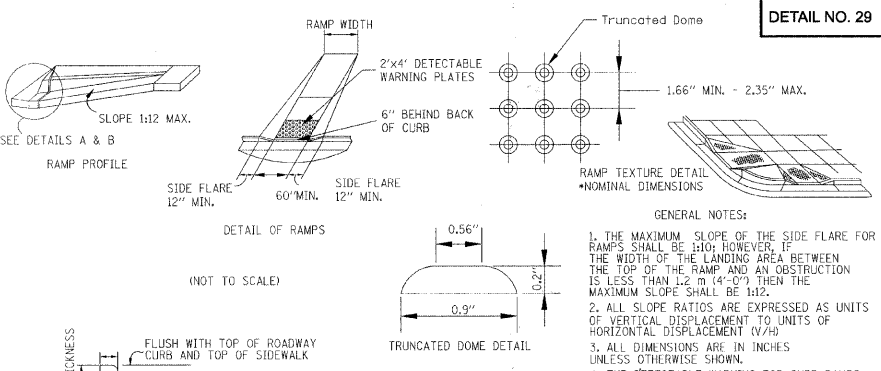
GENERAL NOTES:  
 1. All pavements must be saw cut using a wet saw prior to any excavation.  
 2. All Street patches must be inspected prior to placement of patching materials.  
 3. All granular backfill must be compacted through jettling or tamping.  
 4. Granular material will not be permitted as a temporary surface material. Steel plates, cold mix asphalt, or other materials approved by the Village Engineer shall be utilized.  
 5. Once the 8" permanent PCC has been placed, 2 sheets of 3 mil polyethylene plastic shall be placed over the concrete. The polyethylene sheeting shall be approximately 12" longer than the width and length of the patch.  
 6. Once the 8" PCC lift has cured, a second 2" temporary PCC lift shall be placed. A steel plate shall be placed over the concrete until cured. When temperatures permit, the 2" temporary PCC lift shall be removed and replaced with hot mix asphalt surface mix.  
 7. In locations where bituminous patches will be overlaid with bituminous surface course, strip reflective crack control treatment shall be applied to all pavement joints and centered along the respective joints.

VILLAGE OF HINSDALE  
 STANDARD DETAIL  
 FOR  
 PAVEMENT PATCHING  
 SHEET 2  
 REV: [blank]  
 DATE: APRIL 2008  
 FILE: TRANS#PAVE-PATCH

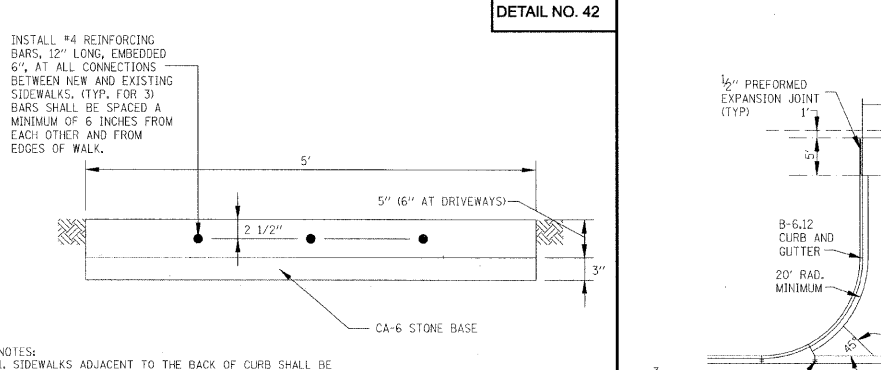


GENERAL NOTES:  
 1. Existing tie bars shall be either cut or removed. Marginal bars shall be cut.  
 2. Concrete patches shall be poured to a minimum thickness of 10" over a minimum of 4" compacted granular base.  
 3. A steel plate shall be placed over the patch after the completion of the concrete placement. The steel plate shall be fixed in place and appropriate warning devices shall be erected. In the event of significant pavement slope or when the plate is moving due to traffic, cold patch should be used to ramp the plate to hold it in place.  
 4. The steel plate shall remain in place for a minimum of 3 calendar days for curing of the concrete. The steel plates shall be removed in a timely manner following the minimum curing period.

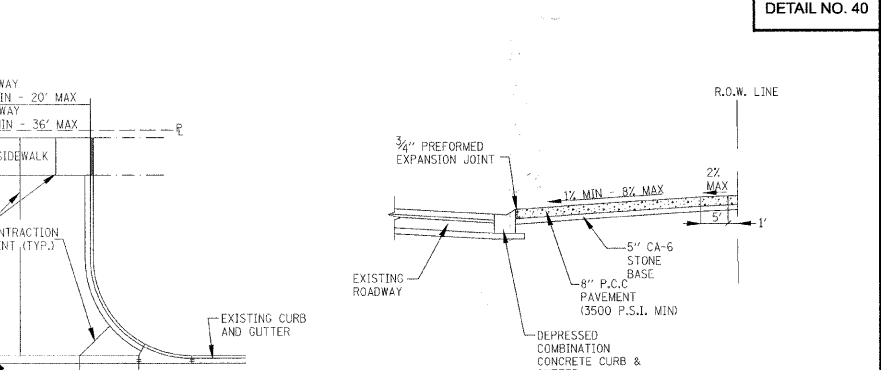
VILLAGE OF HINSDALE  
 STANDARD DETAIL  
 FOR  
 PAVEMENT PATCHING  
 SHEET 3  
 REV: [blank]  
 DATE: APRIL 2008  
 FILE: TRANS#PAVE-PATCH



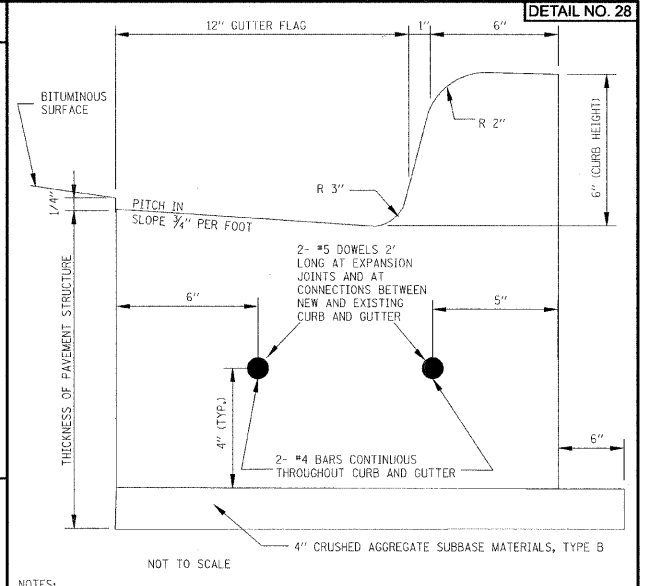
VILLAGE OF HINSDALE  
 STANDARD DETAIL  
 FOR CURB RAMPS  
 ACCESSIBLE TO THE  
 DISABLED  
 REV: [blank]  
 DATE: APRIL 2008  
 FILE: TRANS#CURB-RAMPS



VILLAGE OF HINSDALE  
 STANDARD DETAIL  
 FOR  
 SIDEWALK  
 REV: [blank]  
 DATE: APRIL 2008  
 FILE: MISC#SIDEWALK

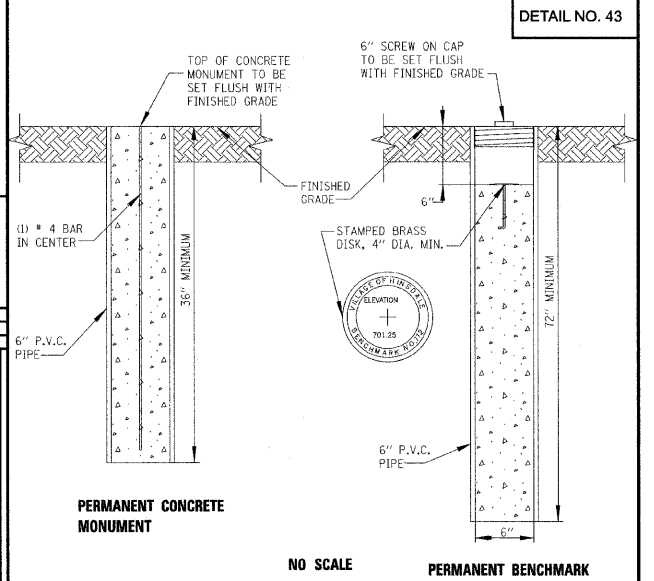


VILLAGE OF HINSDALE  
 STANDARD DETAIL  
 FOR  
 COMMERCIAL  
 ENTRANCE  
 REV: [blank]  
 DATE: APRIL 2008  
 FILE: TRANS#COM ENT



NOTES:  
 1. ALL CURB AND GUTTER SHALL BE CONSTRUCTED WITH IDOT CLASS SI CONCRETE WITH A MINIMUM COMPRESSIVE STRENGTH OF 3500 PSI AT 14 DAYS. PROVIDE AND TEST 3 CYLINDERS FOR EACH DAY'S POUR, OR 50 CUBIC YARDS, WHICHEVER IS LESS.  
 2. CONTRACTION JOINTS SHALL BE SAW-CUT AT MAXIMUM 20' INTERVALS AND CAULKED.  
 3. PREFORMED EXPANSION JOINTS, 3/4" THICK, SHALL BE PLACED FIVE FEET EITHER SIDE OF STORM STRUCTURES IN CURB AND GUTTER, AT CURB RETURNS AND AT POINTS OF CURVATURE, AT ALL CONNECTIONS BETWEEN NEW AND EXISTING CURB AND GUTTER, AND AT 200' INTERVALS ON TANGENTS.  
 4. CURB AND GUTTER AT STORM STRUCTURES SHALL BE BOXED-OUT A MINIMUM OF 5' ON EACH SIDE OF STRUCTURE AND HAND-FORMED BETWEEN EXPANSION JOINTS. FORMS SHALL BE PLACED AND INSPECTED BY VILLAGE PRIOR TO POURING CONCRETE. STRUCTURE FRAMES SHALL BE PLACED AND ADJUSTED PRIOR TO THIS INSPECTION.  
 5. THE FOLLOWING SHALL BE STAMPED IN THE CURB AT THE INDICATED LOCATIONS:  
 "W" FOR WATER SERVICES  
 "S" FOR SANITARY SEWER SERVICES  
 "CO" FOR STORM SEWER SERVICE LINE CLEAN-OUTS  
 "WV" FOR WATER VALVE VAULTS  
 "SM" FOR SANITARY MANHOLES  
 6. DOWELS AT EXPANSION JOINTS SHALL BE CENTERED ON THE JOINT (DRILLED INTO EXISTING CURB AND GUTTER), AND SHALL BE INSTALLED WITH GREASE CAPS ON ONE SIDE.

VILLAGE OF HINSDALE  
 STANDARD DETAIL  
 FOR BARRIER  
 COMBINATION CONCRETE  
 CURB AND GUTTER  
 TYPE B-6-12  
 REV: [blank]  
 DATE: APRIL 2008  
 FILE: TRANS#B-6-12



NOTES:  
 1. PERMANENT CONCRETE MONUMENTS SHALL BE PLACED AT ALL CORNERS AND CHANGES IN BEARING OF THE EXTERIOR BOUNDARY.  
 2. A MINIMUM OF ONE PERMANENT BENCHMARK SHALL BE ESTABLISHED FOR EACH 50 ACRES, OR FRACTION THEREOF, SUBDIVIDED, AT A LOCATION DESIGNATED ON THE CONSTRUCTION PLANS AND APPROVED BY THE VILLAGE ENGINEER.

VILLAGE OF HINSDALE  
 STANDARD DETAIL  
 FOR  
 PERMANENT  
 MONUMENT  
 REV: [blank]  
 DATE: APRIL 2008  
 FILE: MISC#PERM-MON



USER NAME = s.johnson	DESIGNED -	REVISED -
PLOT SCALE = NONE	DRAWN - SVJ	REVISED -
PLOT DATE = 8/13/2009	CHECKED - GT	REVISED -
	DATE - 8/13/09	REVISED -

VILLAGE OF HINSDALE  
 DUPAGE COUNTY, ILLINOIS  
 GARFIELD STREET, FIRST STREET, & PARK AVENUE

STANDARD CONSTRUCTION DETAILS

SCALE: NONE	SHEET NO. 53 OF 65 SHEETS	STA. TO STA.
-------------	---------------------------	--------------

F.A.U. RTE. 167B	SECTION NO. 08-00086-00-RS	COUNTY DUPAGE	TOTAL SHEETS 65	SHEET NO. 53
FED. ROAD DIST. NO. [blank]		ILLINOIS FED. AID PROJECT		CONTRACT NO. 63297