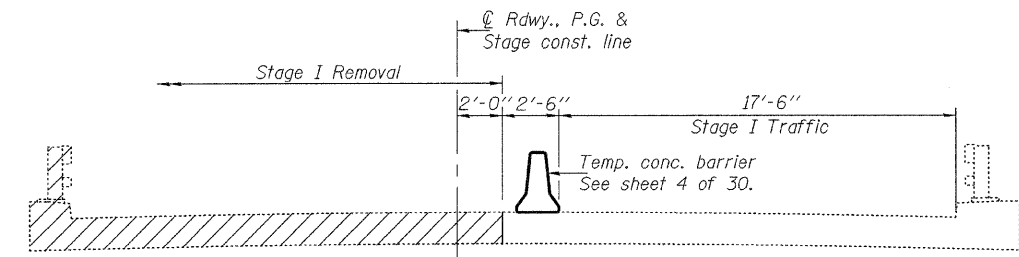
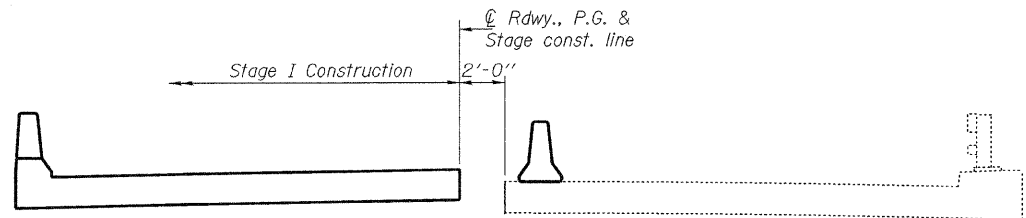


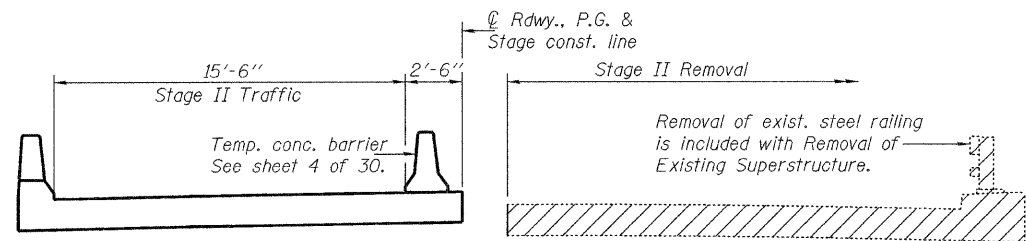
STATE OF ILLINOIS
DEPARTMENT OF TRANSPORTATION



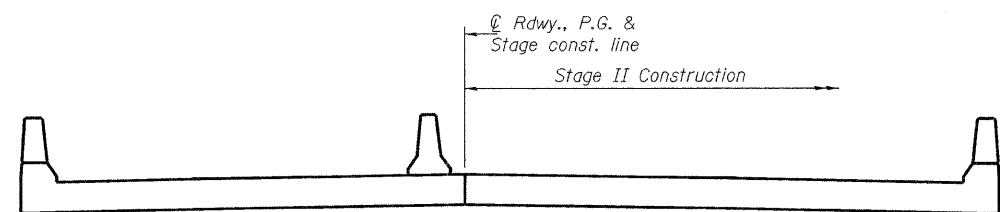
STAGE I REMOVAL



STAGE I CONSTRUCTION

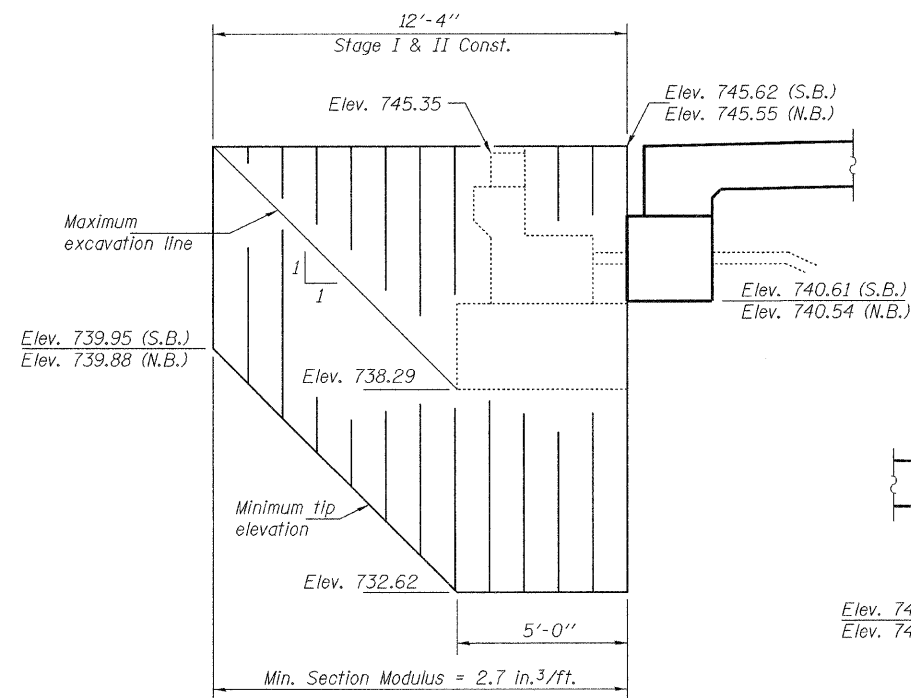


STAGE II REMOVAL

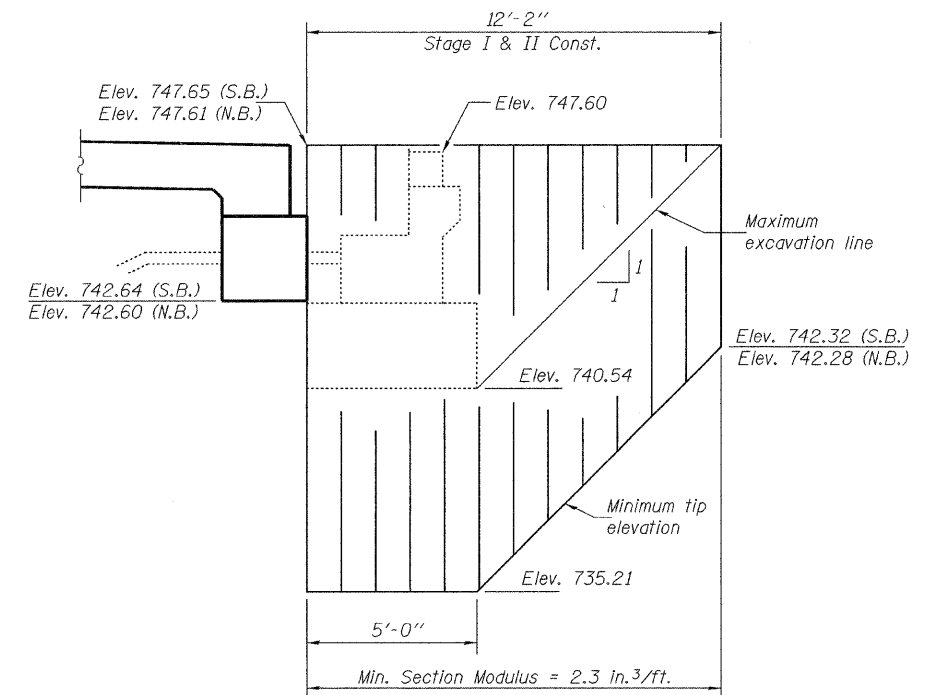


STAGE II CONSTRUCTION

Notes: Hatched areas indicate removal of existing concrete deck.
For quantity of temporary concrete barrier, see Roadway Plans.
All cross sections are looking south for South Bound structure
and looking north for North Bound structure.



**TEMPORARY SHEET PILING
AT NORTH ABUTMENTS**



**TEMPORARY SHEET PILING
AT SOUTH ABUTMENTS**

Notes: If the Contractor chooses to alter the temporary cantilevered sheet piling design requirements shown on the plans, a design submittal including plan details and calculations will be required for review and acceptance by the Engineer.
The Contractor shall connect the first sheet to the existing abutment wall to ensure stability of sheets driven to the top of the existing footing. This connection shall be reviewed and accepted by the Engineer and included in the cost for Temporary Sheet Piling.

DESIGNED	Nicholas R. Barnett
CHECKED	Michael D. Rolape
DRAWN	h.t. duong
CHECKED	NRB/MDR/GRA

September 29, 2009
EXAMINED *Thomas J. Domagalaki*
ENGINEER OF BRIDGE DESIGN
PASSED *Ralph E. Anderson*
ENGINEER OF BRIDGES AND STRUCTURES

**STAGE CONSTRUCTION DETAILS
STRUCTURE NO. 037-0015 (S.B.)
STRUCTURE NO. 037-0016 (N.B.)**

SHEET NO. 3 30 SHEETS	F.A.I. RTE.	SECTION	COUNTY	TOTAL SHEETS	SHEET NO.
	74	37-4HB	HENRY	148	39
			CONTRACT NO. 64264		
FED. ROAD DIST. NO. _ ILLINOIS FED. AID PROJECT					