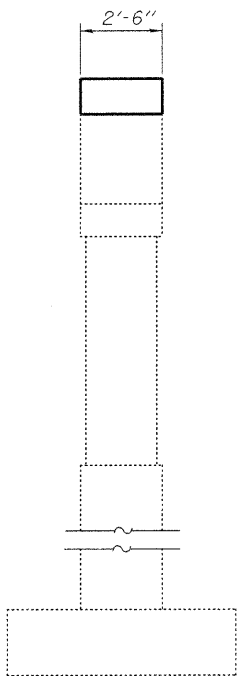
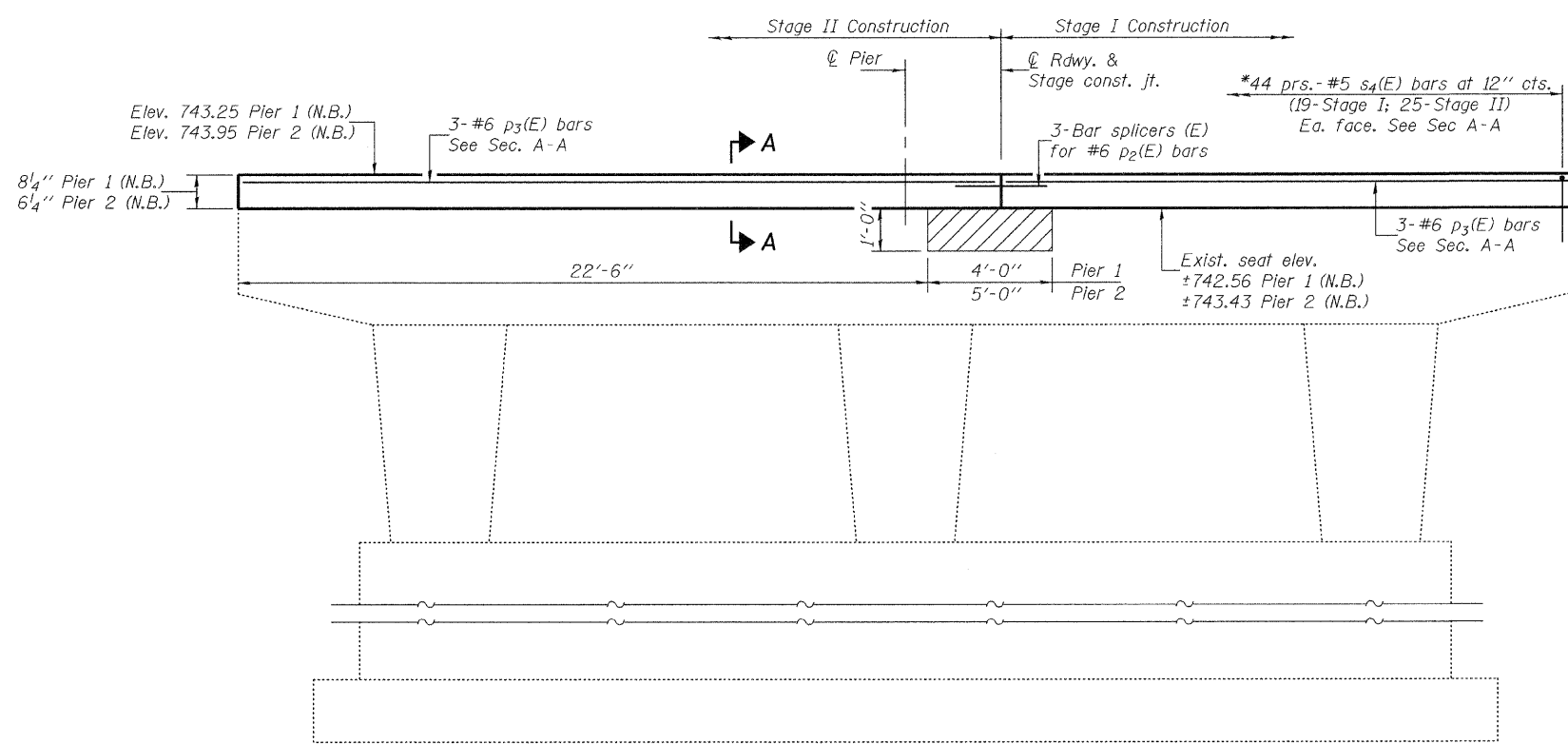
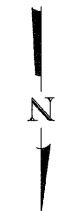
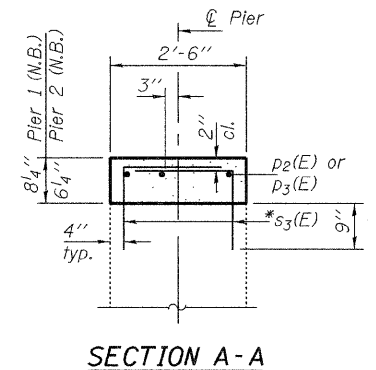
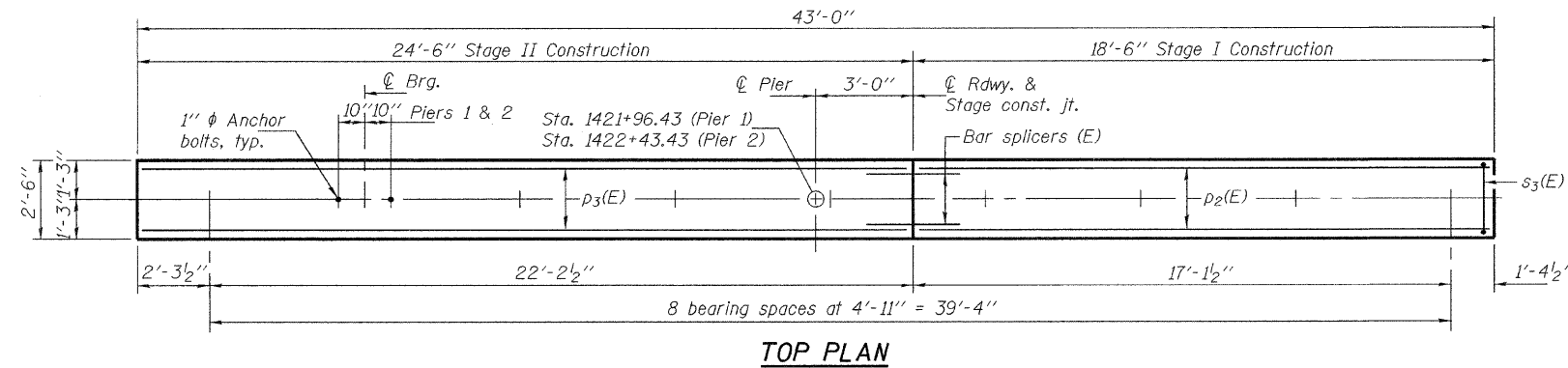
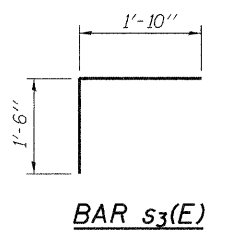


STATE OF ILLINOIS  
DEPARTMENT OF TRANSPORTATION



\*Epoxy grout  $s_3(E)$  bars in 9" min. drilled holes according to section 584 of the Std. Spec's. Cost included with Reinforcement Bars, Epoxy Coated. All grouted bars shall have 4" cl. to the edge of existing concrete.

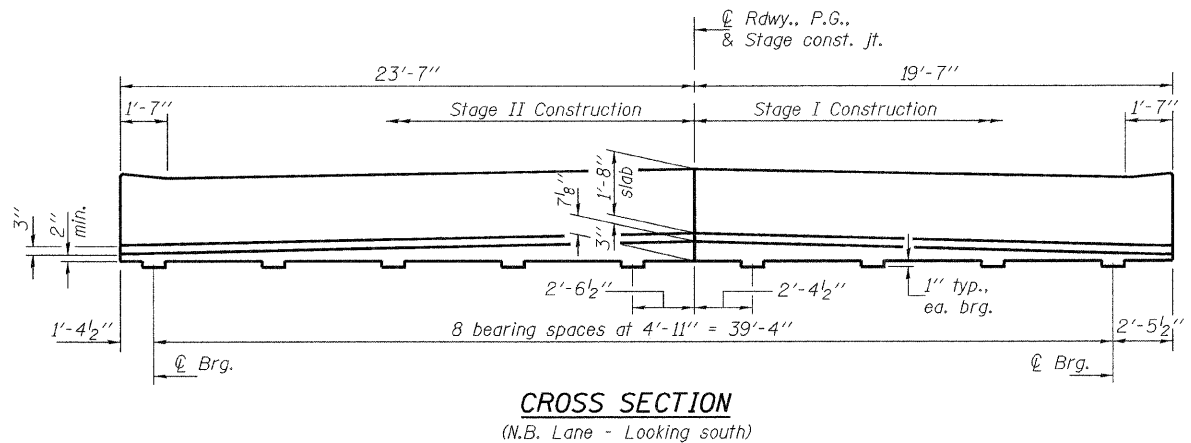


**BILL OF MATERIAL  
FOR PIERS 1 & 2 (N.B.)**

Bar	No.	Size	Length	Shape
$p_2(E)$	6	#6	18'-2"	—
$p_3(E)$	6	#6	24'-2"	—
$s_3(E)$	88	#5	3'-4"	┘
Concrete Structures			Cu. Yd.	4.6
Reinforcement Bars, Epoxy Coated			Pound	690
Structural Repair of Concrete (Depth greater than 5')			Sq. Ft.	9

For details of bar splicers, see sheet 26 of 30.

Note: Hatched area indicates Structural Repair of Concrete (Depth greater than 5').



DESIGNED Nicholas R. Barnett  
CHECKED Michael D. Rolape  
DRAWN h.f. duong  
CHECKED NRB/MDR/GRA

September 29, 2009  
EXAMINED Thomas J. Domagala  
PASSED Ralph E. Anderson

SHEET NO. 21 30 SHEETS	F.A.I. RTE.	SECTION	COUNTY	TOTAL SHEETS	SHEET NO.
	74	37-4HB	HENRY	148	57
CONTRACT NO. 64264					
FED. ROAD DIST. NO. _ ILLINOIS FED. AID PROJECT					