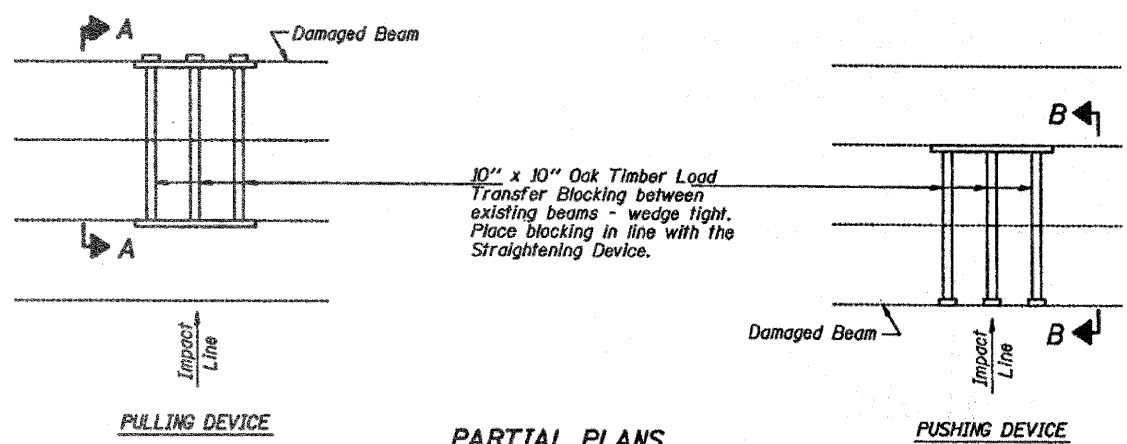


STATE OF ILLINOIS  
DEPARTMENT OF TRANSPORTATION

ROUTE NO.	SECTION	COUNTY	SHEET NO.	TOTAL SHEETS
F.A.I. 74	0	HENRY	149	1120
SHEET NO. 5 7 SHEETS				

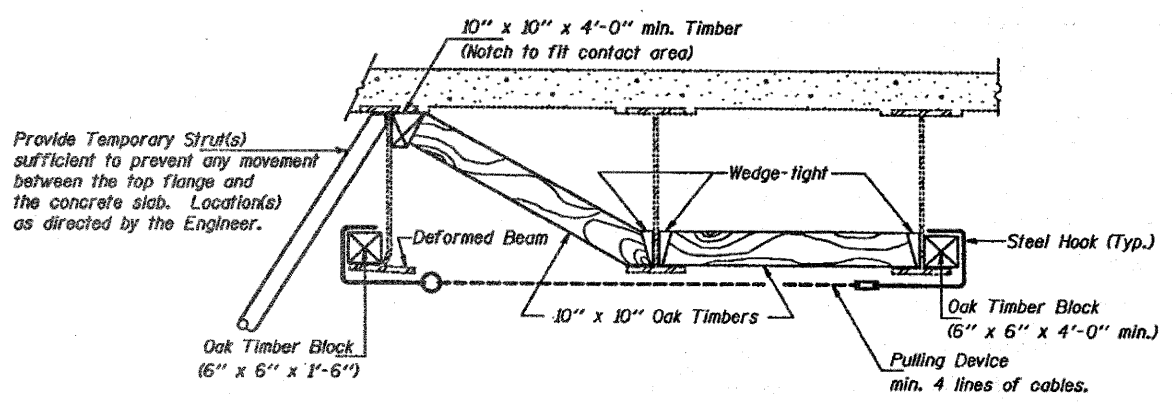
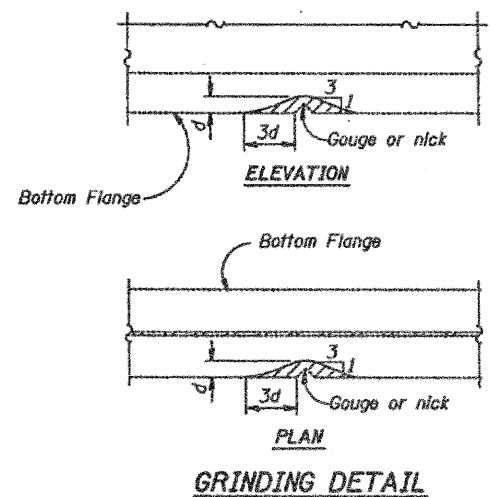
\* (37-3ARS-1 (37-4RS & 37-4B-D



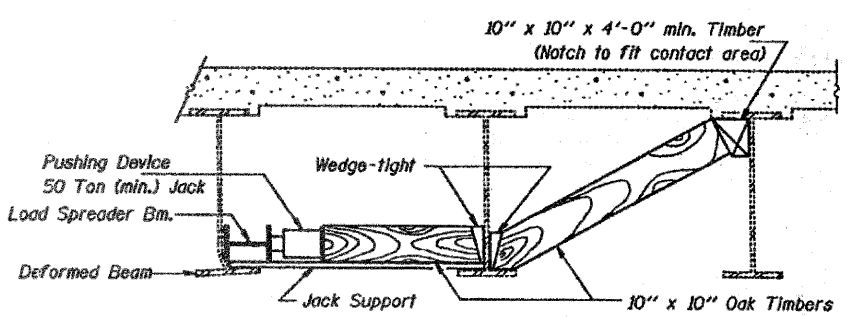
**PARTIAL PLANS  
SUGGESTED BEAM STRAIGHTENING METHODS**

Straightening force shall be maintained on all load transfer blocking during beam straightening.

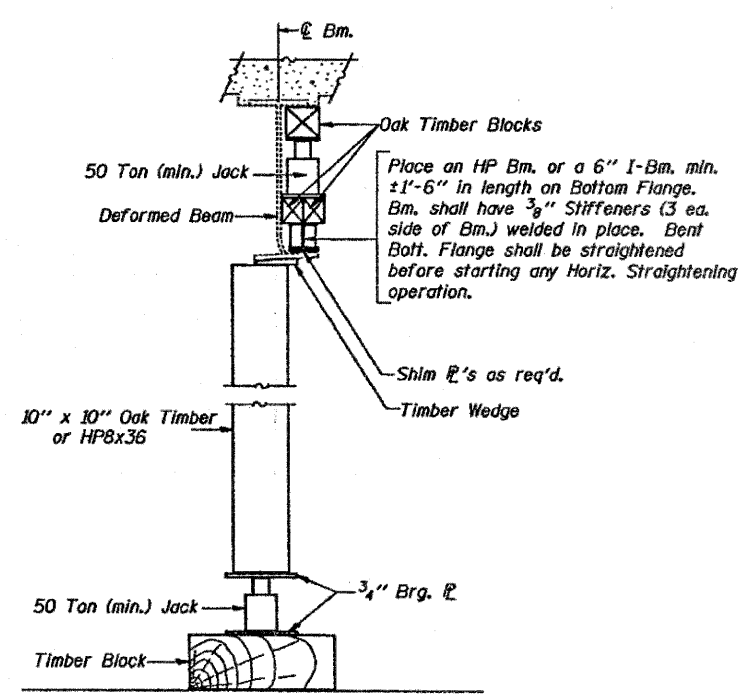
**EXISTING BRIDGE PLANS  
FOR REFERENCE ONLY**



**SECTION A-A**



**SECTION B-B**



**VERTICAL STRAIGHTENING DETAIL**

DESIGNED	A.Y.V.	DECEMBER 03, 1997
CHECKED	D-terbert	EXAMINED <i>Joseph E. Adams</i> ENGINEER OF STRUCTURAL SERVICES
DRAWN	D-terbert	PASSED
CHECKED	A.Y.V. R.T.B.	ENGINEER OF BRIDGES AND STRUCTURES

**BRIDGE REPAIRS**  
F.A.I. RT. 74 SEC 37-4HB-2  
HENRY COUNTY  
STA. 1468+34.24  
S.N. 037-0017

FILE NAME =	USER NAME = perkinsr	DESIGNED -	REVISED -	STATE OF ILLINOIS DEPARTMENT OF TRANSPORTATION	EXISTING BRIDGE PLANS (FOR REFERENCE ONLY)	F.A.I. RTE.	SECTION	COUNTY	TOTAL SHEETS	SHEET NO.
ci:\p\work\p\WIDOT\PERKINSR\dms36777\d200298-sht-detailed.dgn	DESIGNED -	REVISED -	74			37-14HB,4HB-1,4HB-2ID	HENRY	148	131	
PLOT SCALE = 50,0000' / IN.	DRAWN -	REVISED -	CONTRACT NO. 64264							
PLOT DATE = Wed Aug 05 07:35:12 2009	CHECKED -	REVISED -	ILLINOIS FED. AID PROJECT							
	DATE -	REVISED -	SCALE:	SHEET NO.	SHEETS	STA.	TO STA.			