

SQUAD LEADER: JENNIFER LUBBS (815)284-5958 PROJECT ENGINEER: BECKY MARRUFFO

F.A.P. RTE.	SECTION	COUNTY	TOTAL SHEETS	SHEET NO.
638	129BR	HENRY	42	1
FED. ROAD DIST. NO.		ILLINOIS	CONTRACT NO. 64A04	

D-92-052-04 *42+1=43+4=47

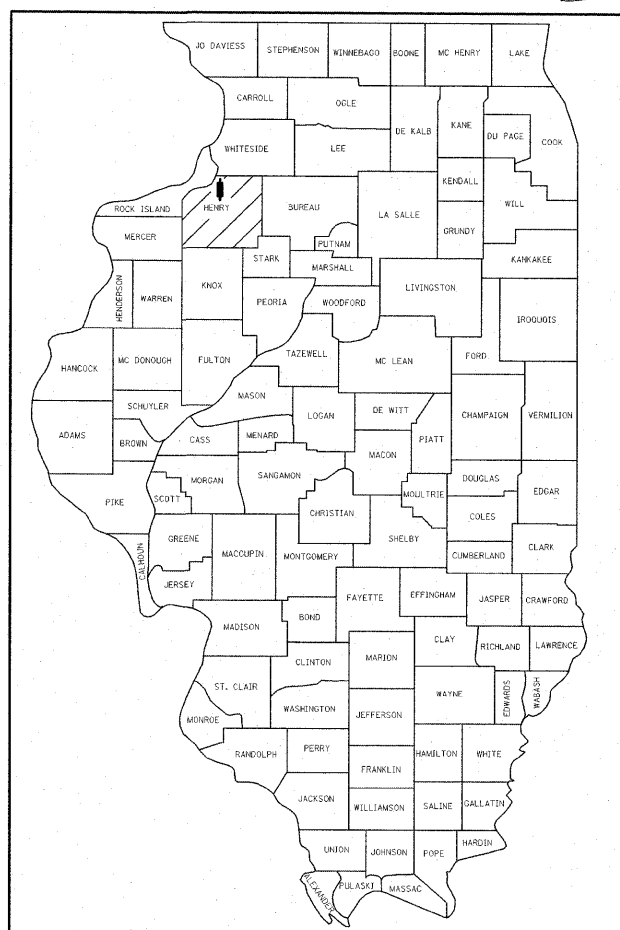
STATE OF ILLINOIS DEPARTMENT OF TRANSPORTATION

DIVISION OF HIGHWAYS

PROPOSED HIGHWAY PLANS

FAP ROUTE 638 (IL 82) SECTION 129BR PROJECT ACBRF-0638(012) HENRY COUNTY

C 92-059-09 STRUCTURE REPLACEMENT OVER ELKS BRANCH NORTH OF GENESEO 4TH PM R3E



LOCATION OF SECTION INDICATED THUS: - [shaded box] -

FUNCTIONAL CLASSIFICATION: MINOR ARTERIAL (NON URBAN)

DESIGN SPEED:	55 mph
POSTED SPEED:	55 mph
ADT:	2100 (2008)
PV:	91.9%
SU:	6.0%
MU:	2.1%

STATE OF ILLINOIS
DEPARTMENT OF TRANSPORTATION
DIVISION OF HIGHWAYS

SUBMITTED August 5, 2009
George F. Ryan
DEPUTY DIRECTOR OF HIGHWAYS, REGION ENGINEER

October 2, 2009
Charles C. Ingersoll
ENGINEER OF DESIGN AND ENVIRONMENT

October 2, 2009
Christine M. Reed
DIRECTOR OF HIGHWAYS, CHIEF ENGINEER

REVISED 10/28/09
**PRINTED BY THE AUTHORITY
OF THE STATE OF ILLINOIS**

INDEX OF SHEETS

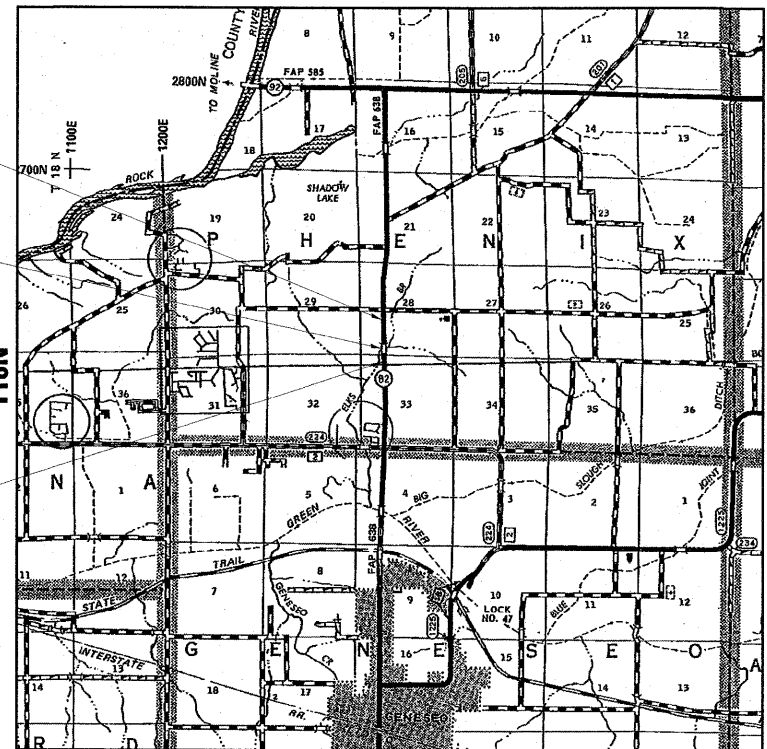
- | SHEET NO. | DESCRIPTION |
|---|---|
| 1. | COVER SHEET |
| 2. | GENERAL NOTES AND STANDARDS |
| 3. | SUMMARY OF QUANTITIES |
| ROADWAY PLANS - SN 037-2027 | |
| 4.-5. | TYPICAL SECTIONS |
| 6.-7. | SCHEDULE OF QUANTITIES |
| 8. | HORIZONTAL AND VERTICAL CONTROL |
| 9.-12. | FAP RTE 638 (IL 82) PLAN AND PROFILE |
| 13.-14. | STAGE CONSTRUCTION PLANS |
| 15. | STAGE CONSTRUCTION DETAILS |
| 16. | EROSION CONTROL AND DRAINAGE PLAN |
| 17. | MISCELLANEOUS DETAILS |
| STRUCTURE PLANS - SN 037-2027 | |
| 18. | GENERAL PLAN |
| 19. | STAGED CONSTRUCTION |
| 20. | TEMPORARY CONCRETE BARRIER FOR STAGE CONSTRUCTION |
| 21.-22. | CULVERT DETAILS |
| 23. | BAR SPICER ASSEMBLY DETAILS |
| 24.-25. | SOIL BORING LOGS |
| EXISTING STRUCTURE PLANS - SN 037-2003 | |
| 26. | EXISTING STRUCTURE PLANS |
| CROSS SECTIONS - SN 037-2027 | |
| 27.-34. | FAP RTE 638 (IL 82) CROSS SECTIONS |
| DISTRICT 2 STANDARDS | |
| 35.-42. | GRADING AROUND WINGWALLS (20.4)
DETAIL OF HOT-MIX ASPHALT SHOULDER AT GUARD RAIL (23.4)
SLOPED HEADWALL TYPE 1 FOR FIELD TILE OUTLETS (28.4)
DELINEATOR AND POST ORIENTATION (37.4)
TYPICAL BENCHING ON EXISTING EMBANKMENT (50.4)
LAND SECTION & REFERENCE MARKERS (63.4)
STOP LINE SIGN FOR TEMPORARY SIGNALS (99.4)
EROSION CONTROL DETAILS FOR SILT FENCE (29.2)
FIELD TILE JUNCTION VAULTS 600(24) AND 900(36) DIA. (30.2)
INFORMATIONAL WARNING SIGN (FOR NARROW TRAVEL LANES) (39.2)
WITNESS MARKER & PERMANENT SURVEY MARKERS, TYPE II (66.2)
ENTRANCE SIGN FOR USE WITH TEMPORARY SIGNALS (75.2)
STORM WATER POLLUTION PREVENTION PLAN (2.1)
TYPICAL PAVEMENT MARKINGS (41.1) |

23A-D DETAILS FOR NEW FIELD ENTRANCE

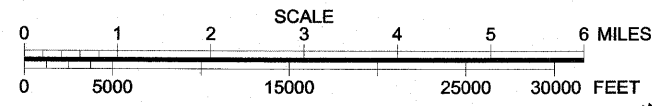
IMPROVEMENTS END
STA. 1361+00
SECTIONS ENDS
STA. 1360+50

STA. 1350+29.74
SN 037-2027
TRIPLE
9' SPAN X 9' RISE
BOX CULVERT

IMPROVEMENTS BEGIN
STA. 1347+59
SECTION BEGINS
STA. 1348+62



LOCATION MAP



GROSS LENGTH = 1188 FT. = 0.23 MI.
NET LENGTH = 1188 FT. = 0.23 MI.



ESCA
CONSULTANTS, INC.

CIVIL & STRUCTURAL ENGINEERS
URBANA, ILLINOIS
(217)384-0505
PROJECT ENGINEER: ERIC HENKEL



FULL SIZE PLANS HAVE BEEN PREPARED USING STANDARD ENGINEERING SCALES. REDUCED SIZED PLANS WILL NOT CONFORM TO STANDARD SCALES. IN MAKING MEASUREMENTS ON REDUCED PLANS, THE ABOVE SCALES MAY BE USED.

J.U.L.I.E.
JOINT UTILITY LOCATION INFORMATION FOR EXCAVATION
1-800-892-0123
OR 811

PHENIX TOWNSHIP, SEC. 28, 33

CONTRACT NO. 64A04

FAP 638 (IL 82) SECTION 129BR HENRY COUNTY